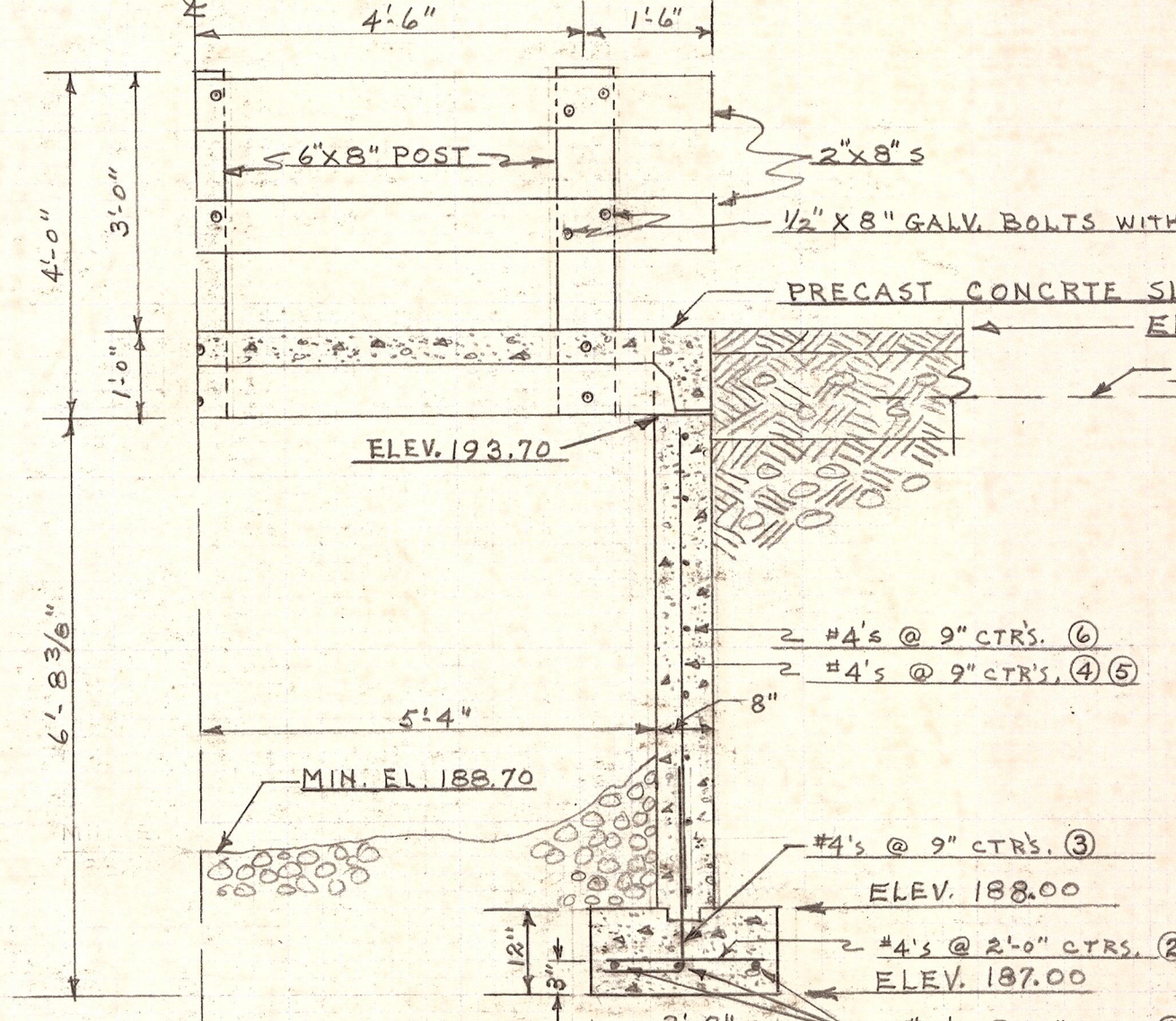
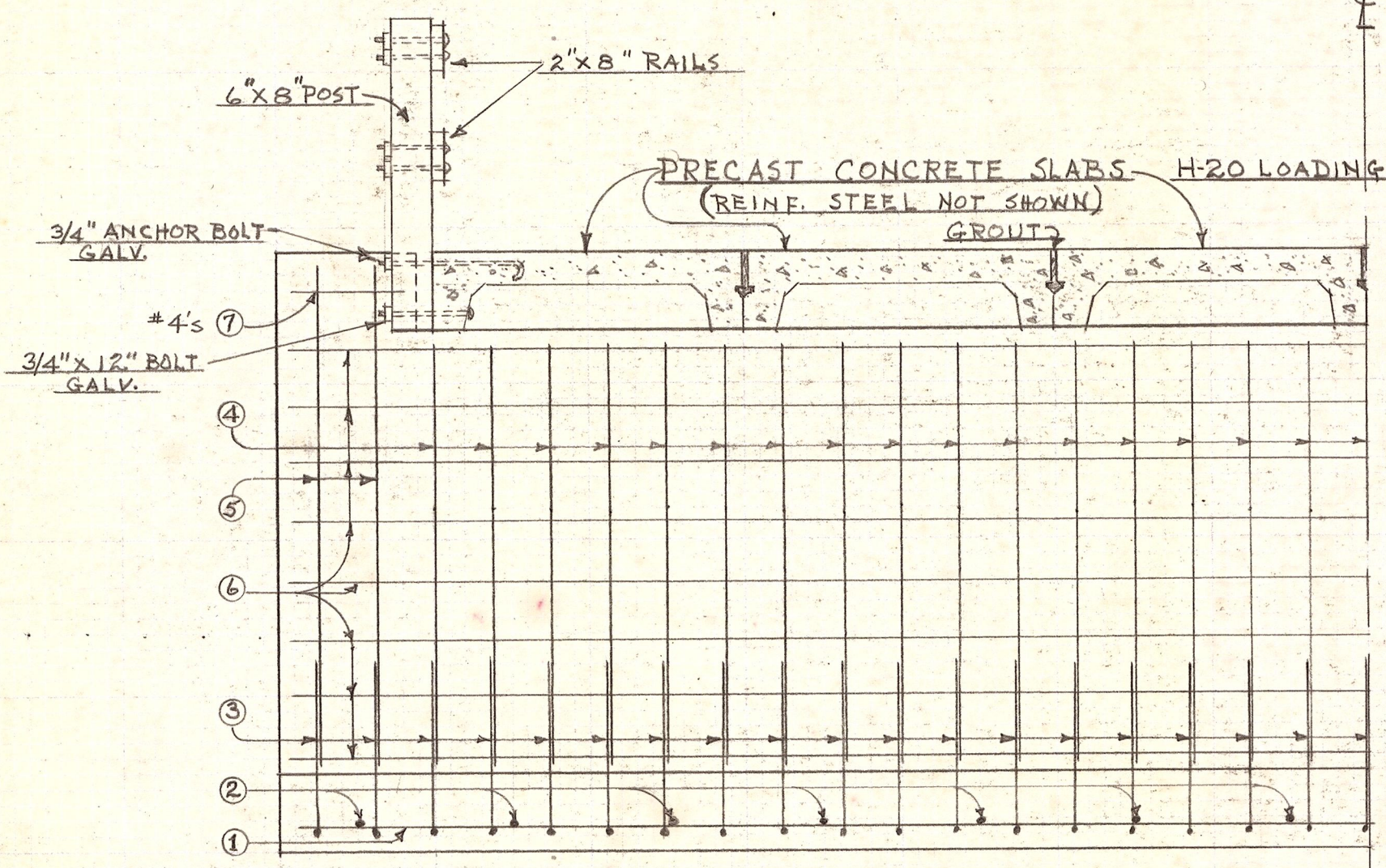


REINFORCING STEEL SCHEDULE			
①	3 PCS.	#5 x 31'-8"	STRAIGHT (SOUTH)
①	3 PCS.	#5 x 27'-8"	" (NORTH)
②	30 PCS.	#4 x 1'-11"	" ^{90°} _{12"}
③	80 PCS.	#4 x 3'-2"	"
④	66 PCS.	#4 x 5'-6"	STRAIGHT
⑤	14 PCS.	#4 x 6'-6"	"
⑥	8 PCS.	#4 x 27'-8"	" (NORTH)
⑥	8 PCS.	#4 x 31'-8"	" (SOUTH)
⑦	3 PCS.	#4 x 1'-7"	"
⑦	1 PCS.	#4 x 5'-7"	" (SOUTH)



NOTE
 B.M. ELEV. 195.25 ON POWER POLE
 LOCATED 30' NORTH OF TOWN
 DITCH ON EAST RIGHTWAY LINE.

BRIDGE NO. 79092
 COUNTY ROAD PROJECT NO. _____
 BRIDGE ON FERGUSON RD. ROAD
 COUNTY ENGINEER KITTITAS COUNTY, WASH.
 ELLENSBURG, WASHINGTON
 SCALE: HORIZ. ONE IN. = 2 FT. VERT. ONE IN. = 2 FT.
 SHEET 1 OF 1 SHEETS

D.E. AKINS
 COUNTY ROAD ENGINEER
 12/4/62