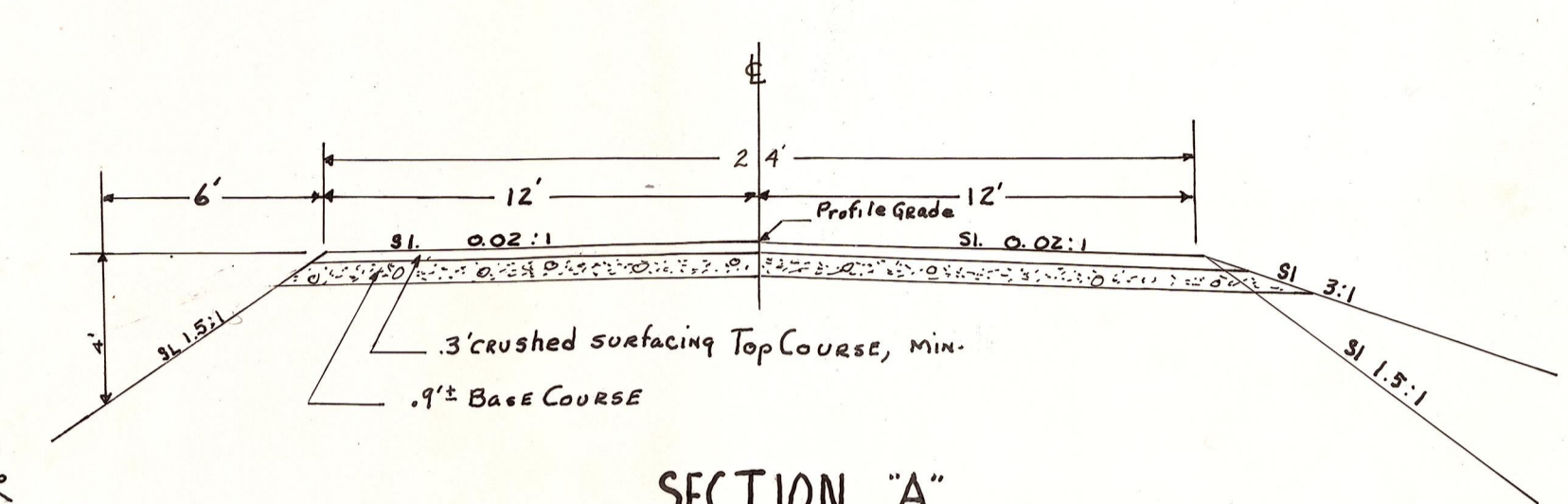
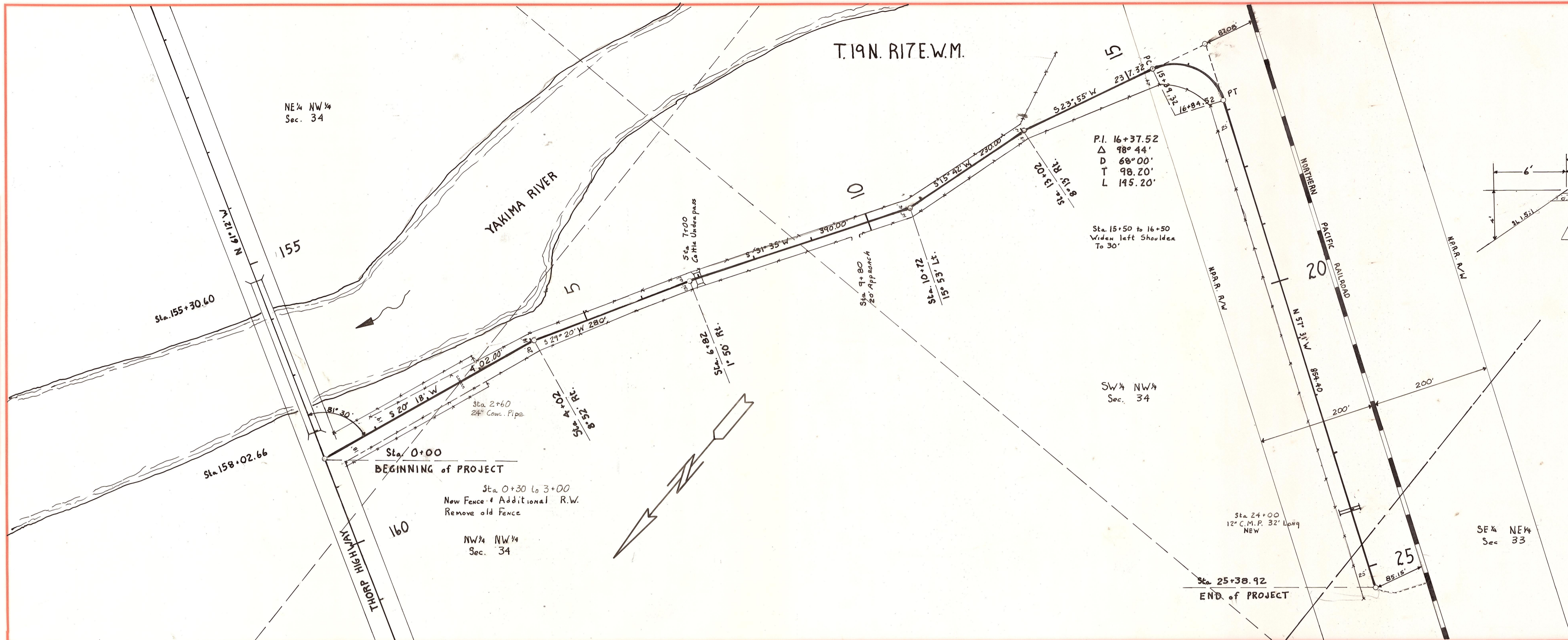


DATE	
BY	
NO.	
PLANNING	
DESIGN	
CONSTRUCTION	
AS BUILT	

DATE	
BY	
NO.	
PROFILE	
DESIGN	
CONSTRUCTION	
AS BUILT	



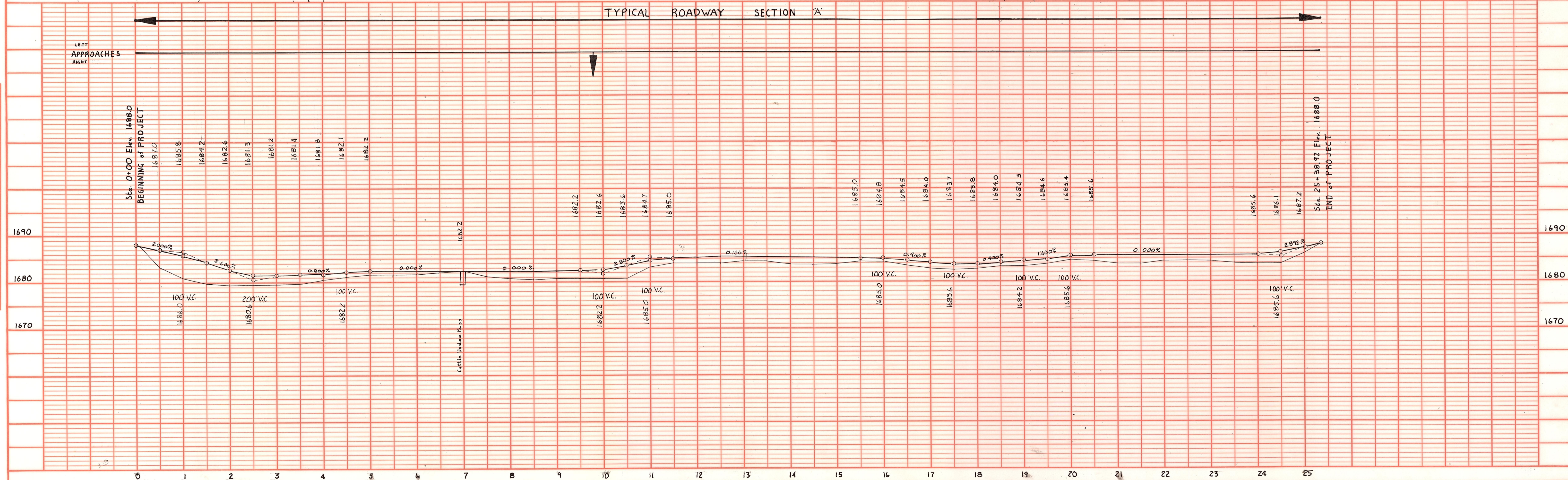
OFFICE OF COUNTY ROAD ENGINEER  
**KITTITAS COUNTY**  
 ELLENSBURG, WASHINGTON  
**DUDLEY ROAD**  
 THORP HIGHWAY to END

SCALE: H 1" = 100'  
 V 1" = 10'

CRP - 6-66

DRAWN BY L.D.Y. DATE Feb. 26, 1966 SHEET 1 OF 1

APPROVED: *Howard E. Anderson*  
 DATE 3-4-66 COUNTY ROAD ENGINEER



DUDLEY RD.