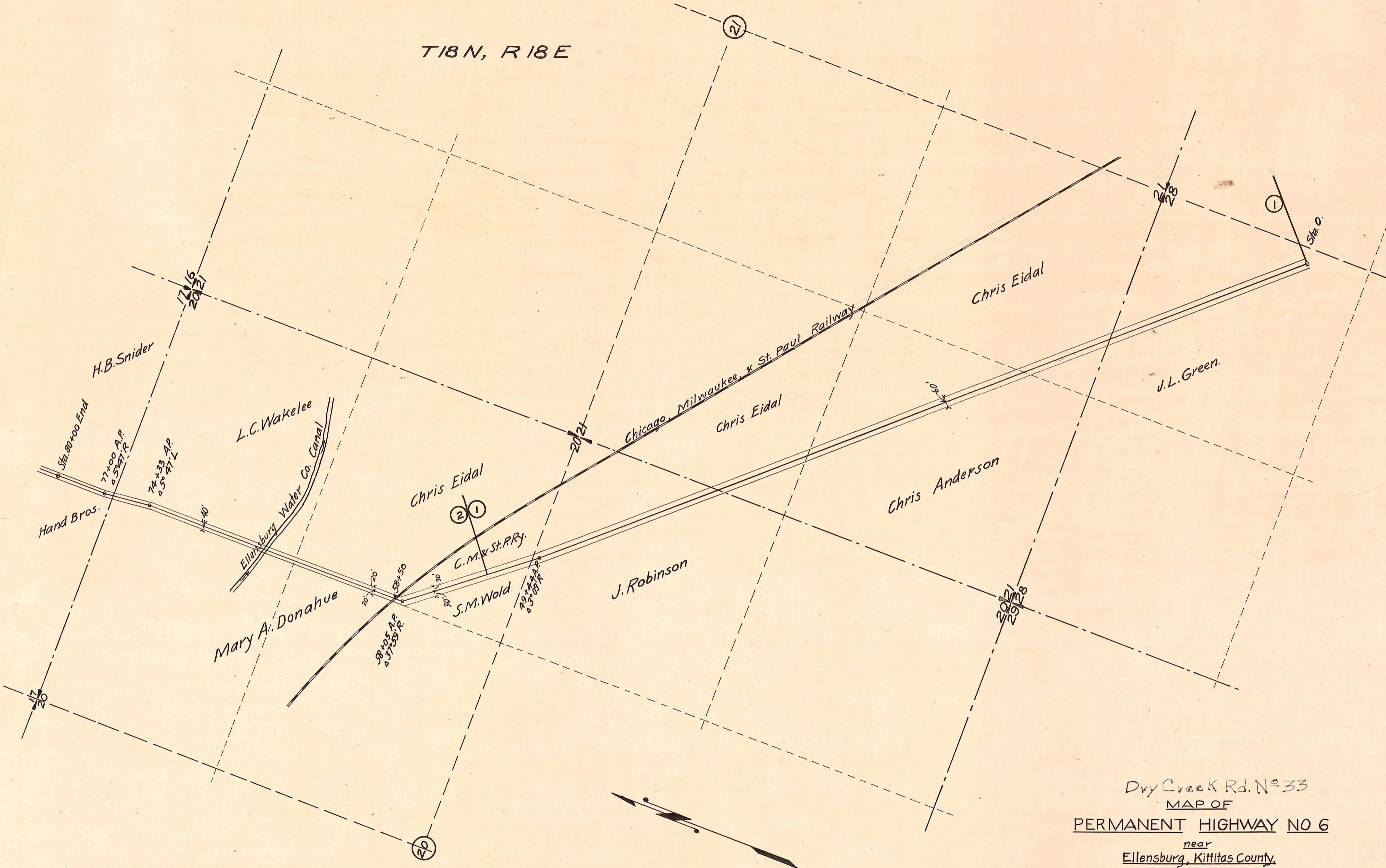


T18N, R18E



Dry Creek Rd. No 33
 MAP OF
 PERMANENT HIGHWAY NO 6
 near
 Ellensburg, Kittitas County.
 Scale 1 in = 400 ft. April 16-1915.

Approved:

 Highway Commissioner.

15-2-7

STATE HWY. 2-1 22-41

2-16-1