

15-12  
B 11-8-3

T.18 N. R.18E.

T.17 N. R.18E.

T.18 N. R.17E.

T.17 N. R.17E.

Katherina Murray

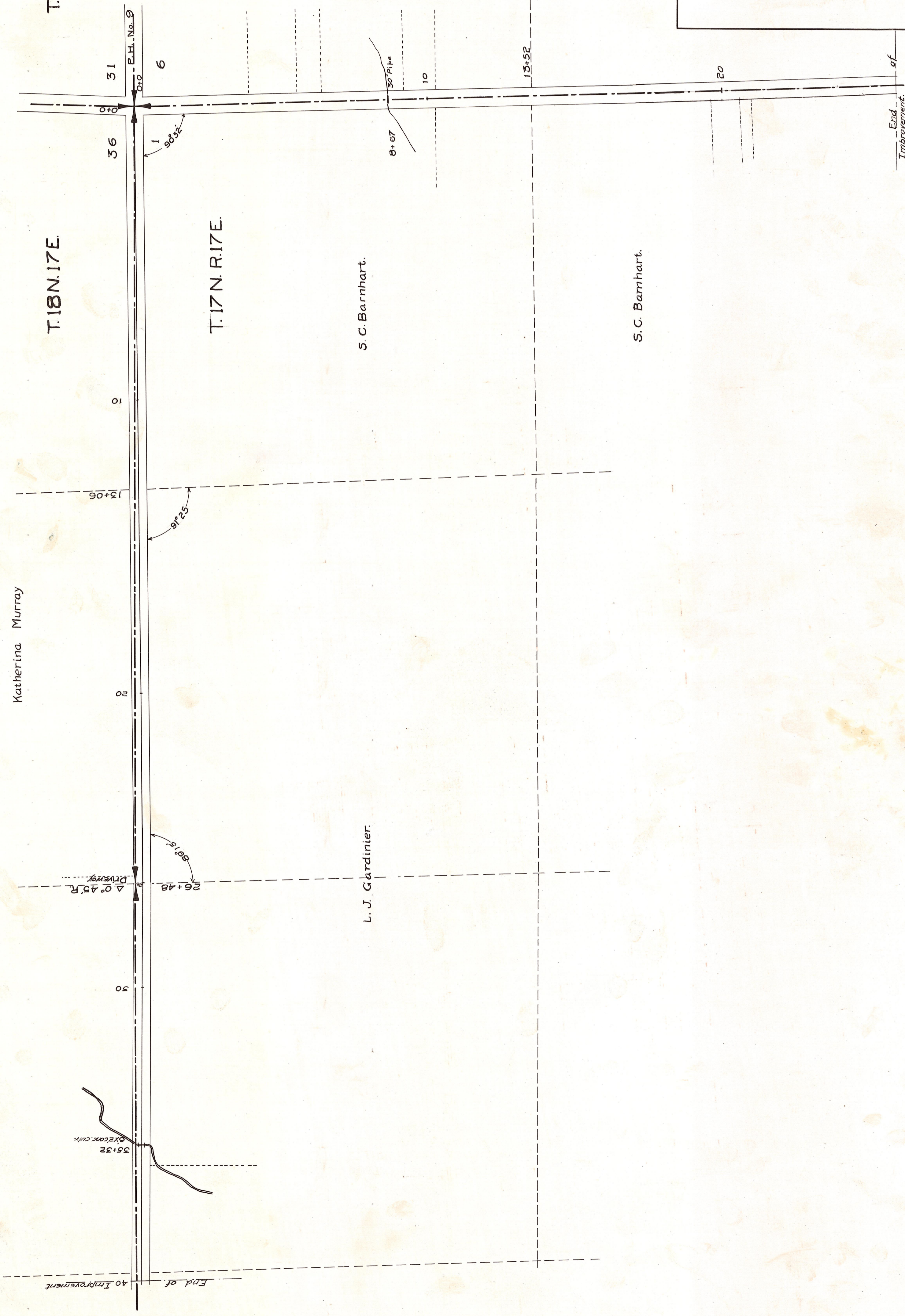
J. M. Prater.

S. C. Barnhart.

L. J. Gardinier.

Jake Frederick.

S. C. Barnhart.



Catlin-Cove School  
Water Road No 76

MAP OF

PERMANENT HIGHWAY No 9-A

KITTITAS COUNTY

SCALE 1" = 200' FEBRUARY 1923

APPROVED:

SUPERVISOR OF HIGHWAYS

ONE SHEET

End of Improvement