

TWP. 21 N. R. 21 E.

Change in Colockum Road

5TH St. Pl.-N.

S.C. 435.6'

C.+C.

431'

1320'

1320'

TWP. 20 N. R. 21 E.

LOT 1 48.07 ACRES.

324.7'

6-8-2

1320'

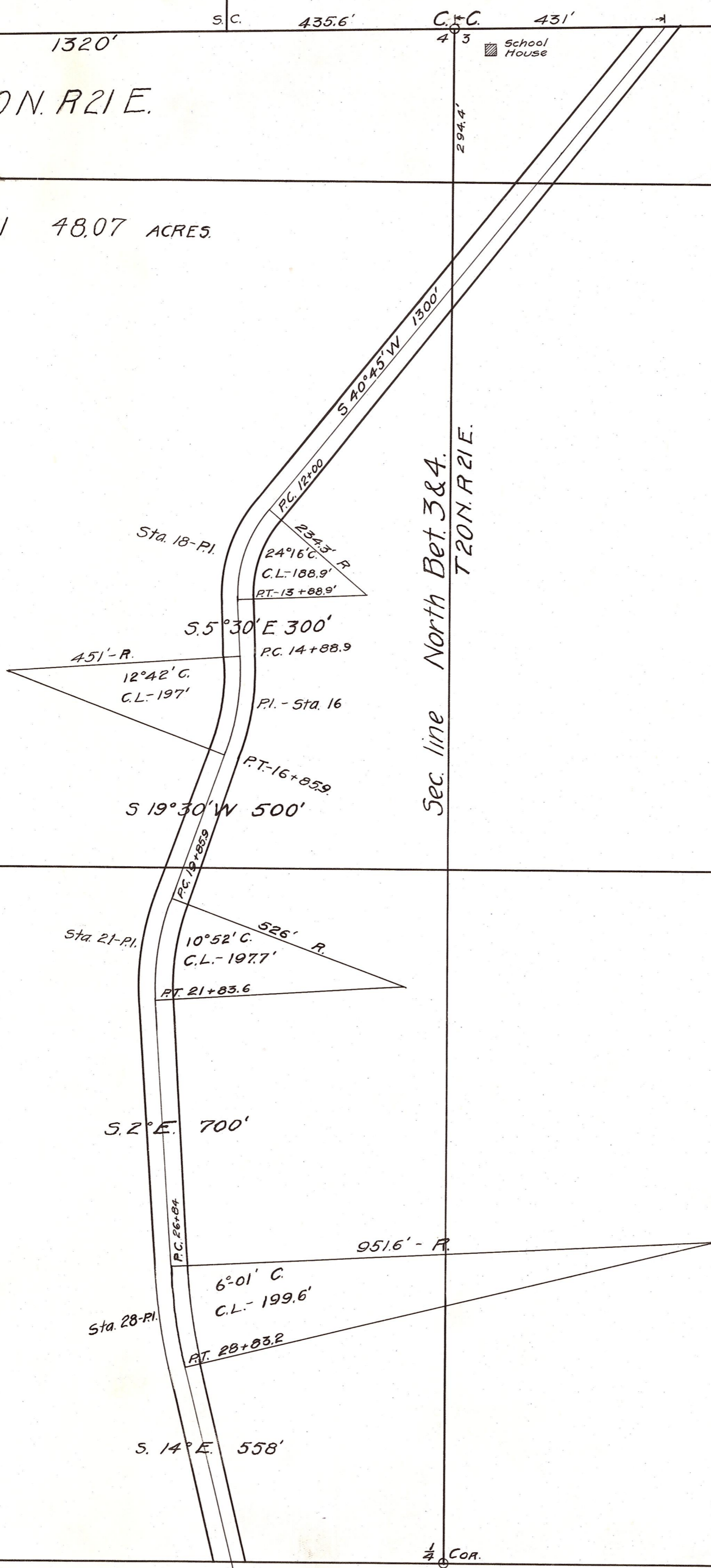
1320'

1320'

1320'

15-41

COLOCKUM RD.



CHANGE IN COLOCKUM ROAD #27

Moses M. Emerson
COUNTY ENGINEER.

Sec. line North Bet. 3 & 4.
T. 20 N. R. 21 E.

40 ACRES.

1/4 COR.