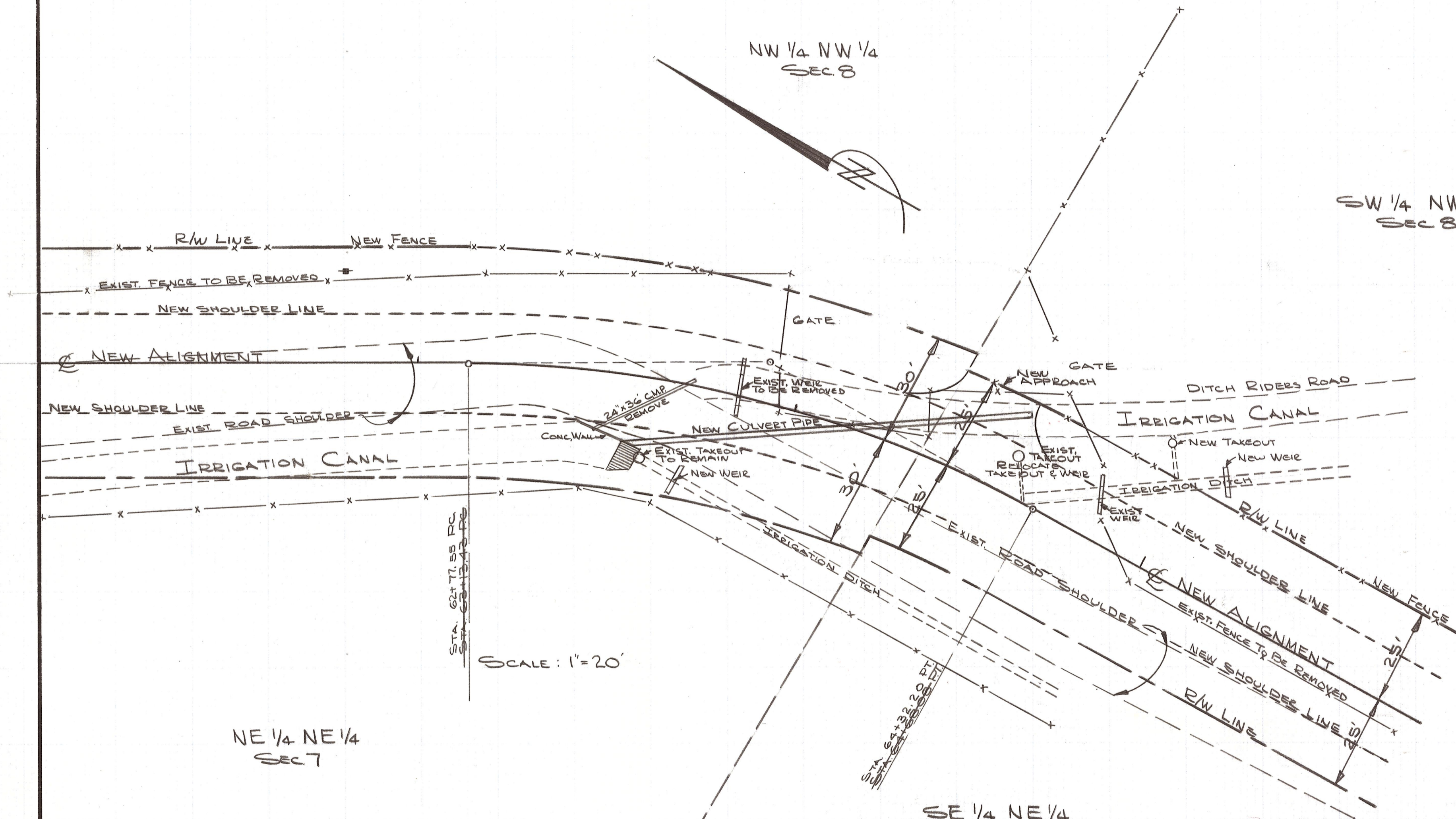


T. 17 N. R. 20 E. W.M.
SEC. 8

NW 1/4 NW 1/4
SEC. 8

SW 1/4 NW 1/4
SEC. 8



STA 62+71.55 PC
STA 63+34.26 PG

SCALE: 1"=20'

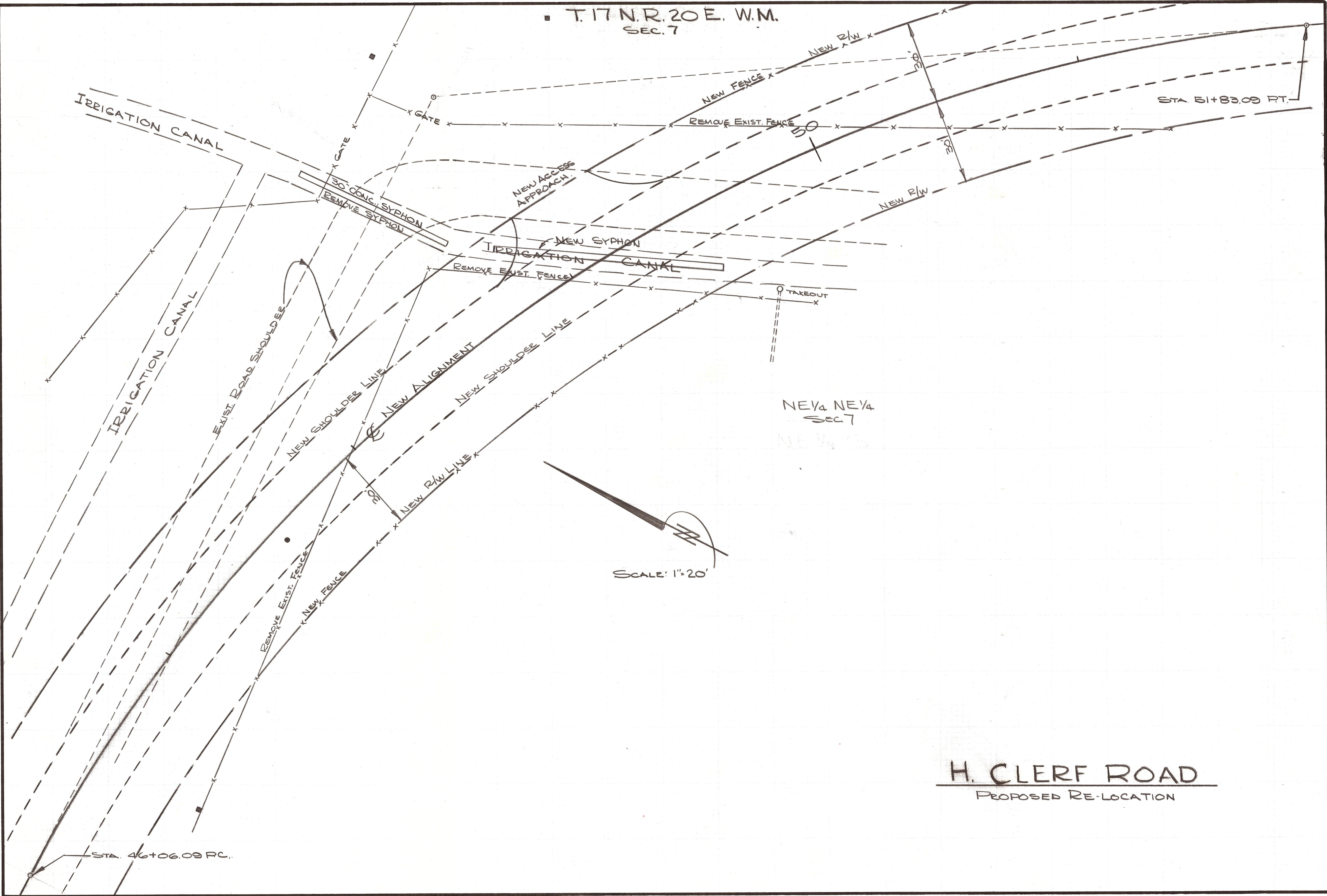
NE 1/4 NE 1/4
SEC. 7

STA 54+32.20 PT
STA 54+56.50 ET

SE 1/4 NE 1/4
SEC. 7

H. CLERF ROAD
PROPOSED RE-LOCATION

T. 17 N. R. 20 E. W.M.
SEC. 7



H. CLERF ROAD
PROPOSED RE-LOCATION