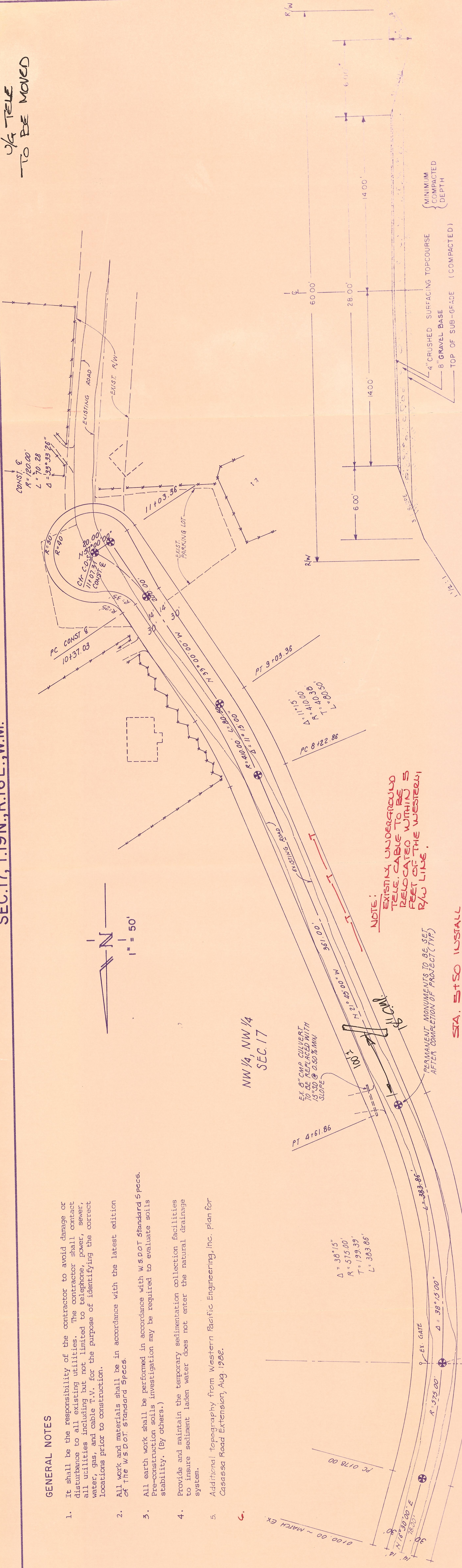


1/4 TELE
TO BE MOVED

GENERAL NOTES

1. It shall be the responsibility of the contractor to avoid damage or disturbance to all existing utilities. The contractor shall contact all utilities including but not limited to telephone, power, sewer, water, gas, and cable T.V. for the purpose of identifying the correct locations prior to construction.
2. All work and materials shall be in accordance with the latest edition of the W.S.DOT Standard Specs.
3. All earth work shall be performed in accordance with W.S.DOT Standard Specs. Pre-construction soils investigation may be required to evaluate soils stability. (By others.)
4. Provide and maintain the temporary sedimentation collection facilities to insure sediment laden water does not enter the natural drainage system.
5. Additional topography from Western Pacific Engineering, Inc. plan for Casassa Road Extension, Aug. 1982.

NW 1/4, NW 1/4
SEC. 17



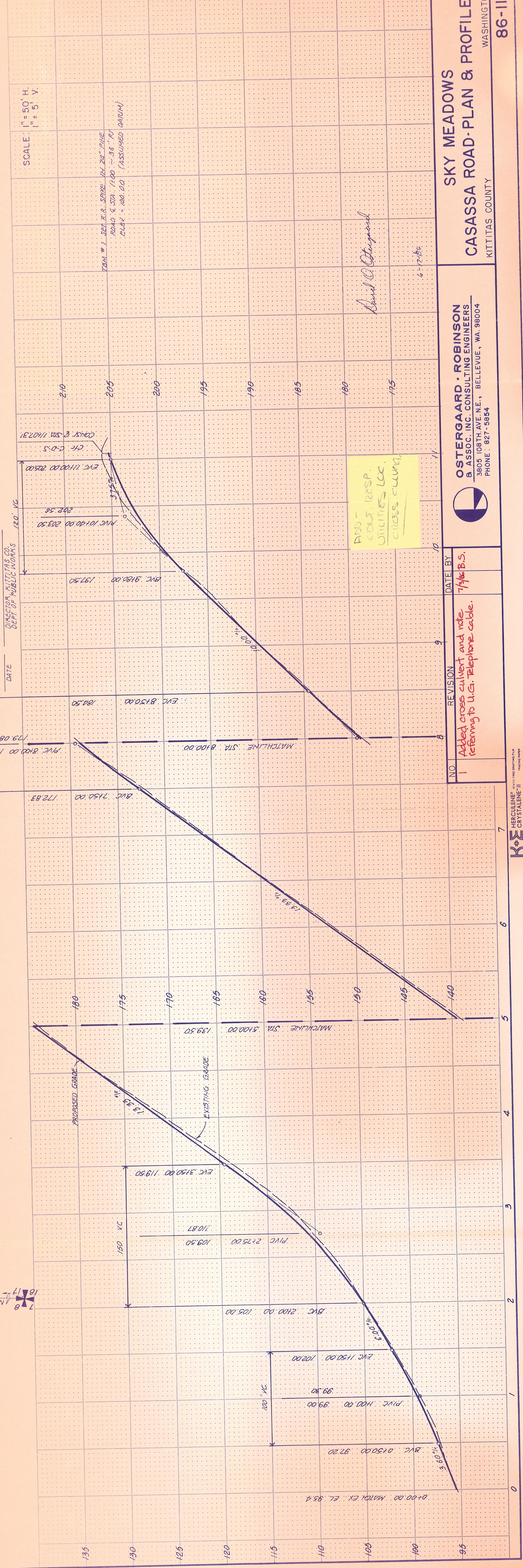
ROADWAY SECTION

ALL MATERIAL USED MUST FIRST BE APPROVED BY THE COUNTY ENGINEER

APPROVED FOR CONSTRUCTION
DATE _____
DIRECTOR, KITTITAS CO. DEPT. OF PUBLIC WORKS

PERMANENT MARKINGS TO BE SET AFTER COMPLETION OF PROJECT (TYP)

STA. 5+50 USFALL
NEW 16' C.M.P.



ADD -
CULT RESP.
UTILITIES LOC.
CROSS CULVERT

| NO. | REVISION | DATE | BY |
|-----|---|---------|----|
| 1 | Added cross culvert and note referring to U.S. Telephone cable. | 7/16/85 | |

OSTERGAARD · ROBINSON
& ASSOC. INC. CONSULTING ENGINEERS
3605 108TH AVE. N.E., BELLEVUE, WA 98004
PHONE · 827-3654

SKY MEADOWS
CASASSA ROAD-PLAN & PROFILE