

APPROX. QUANTITIES

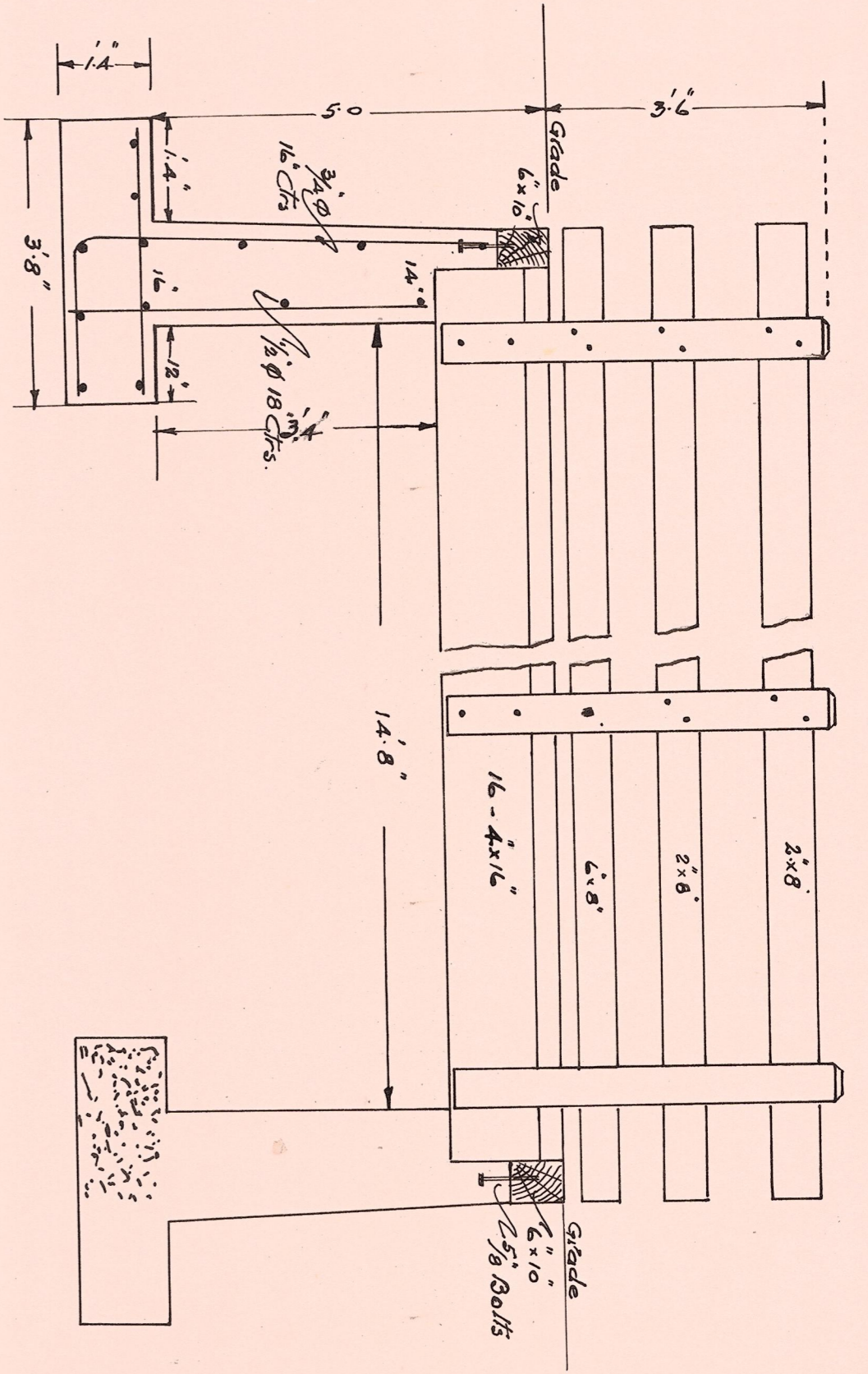
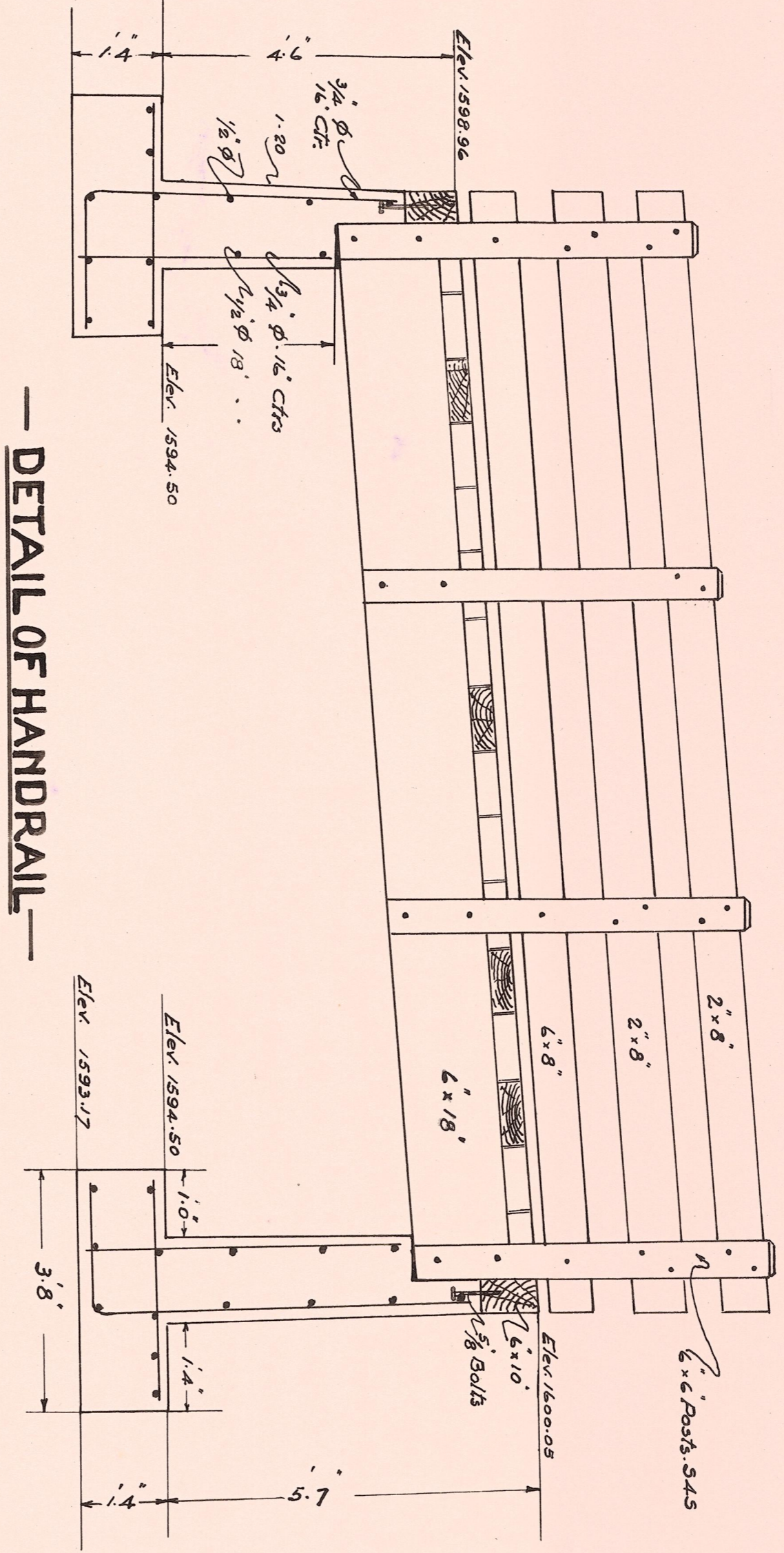
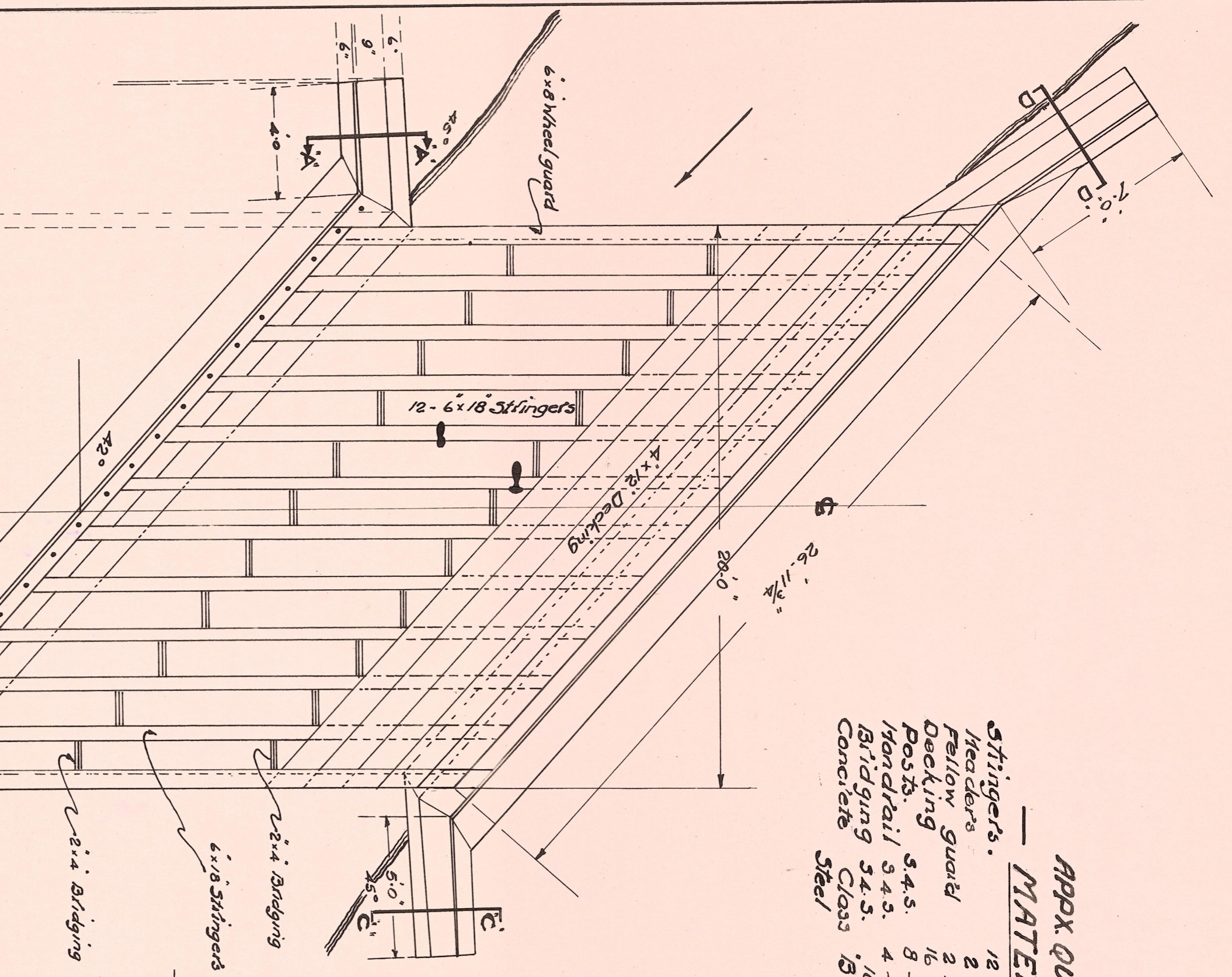
MATERIAL No. 1

Stringers	12 - 6" x 18" x 28'-0"	B.M.	2376
Headings	2 - 6" x 10" x 28'-0"		280
Fellow Guard	2 - 6" x 8" x 18'-0"		144
Decking	16 - 4" x 12" x 28'-0"		1792
Posts	8 - 6" x 6" x 6'-0"		144
Handrail	4 - 2" x 8" x 18'-0"		96
Bridging	100 - Lin. ft. 2" x 4"		67
Concrete	18 - 55 C.Yds		
Steel	18 - 55 lbs		

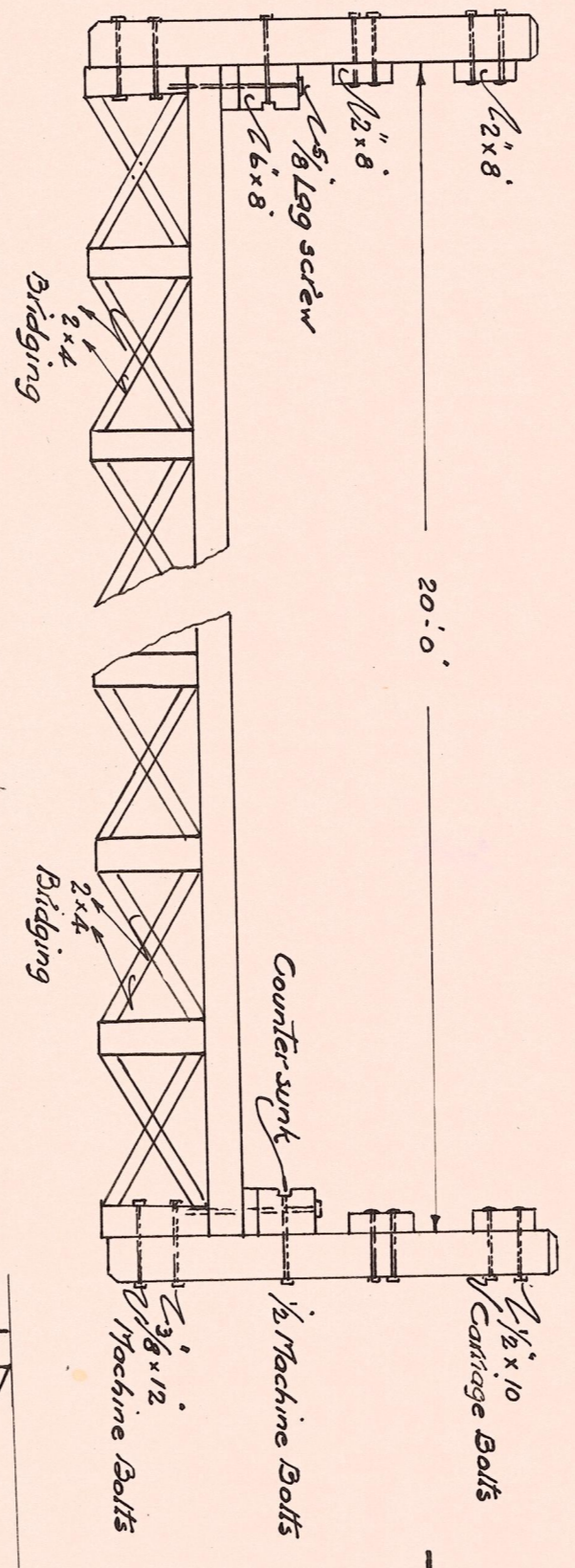
APPROX. QUANTITIES

MATERIAL No. 2

Stringers	14 - 4" x 16" x 14'-0"	B.M.	1366
Headings	2 - 6" x 10" x 28'-0"		200
Fellow Guard	2 - 6" x 8" x 18'-0"		144
Decking	16 - 4" x 12" x 28'-0"		1280
Posts	6 - 6" x 6" x 6'-0"		108
Handrail	4 - 2" x 8" x 18'-0"		96
Bridging	100 - Lin. ft. 2" x 4"		67
Concrete	18 - 55 C.Yds		
Steel	18 - 55 lbs		

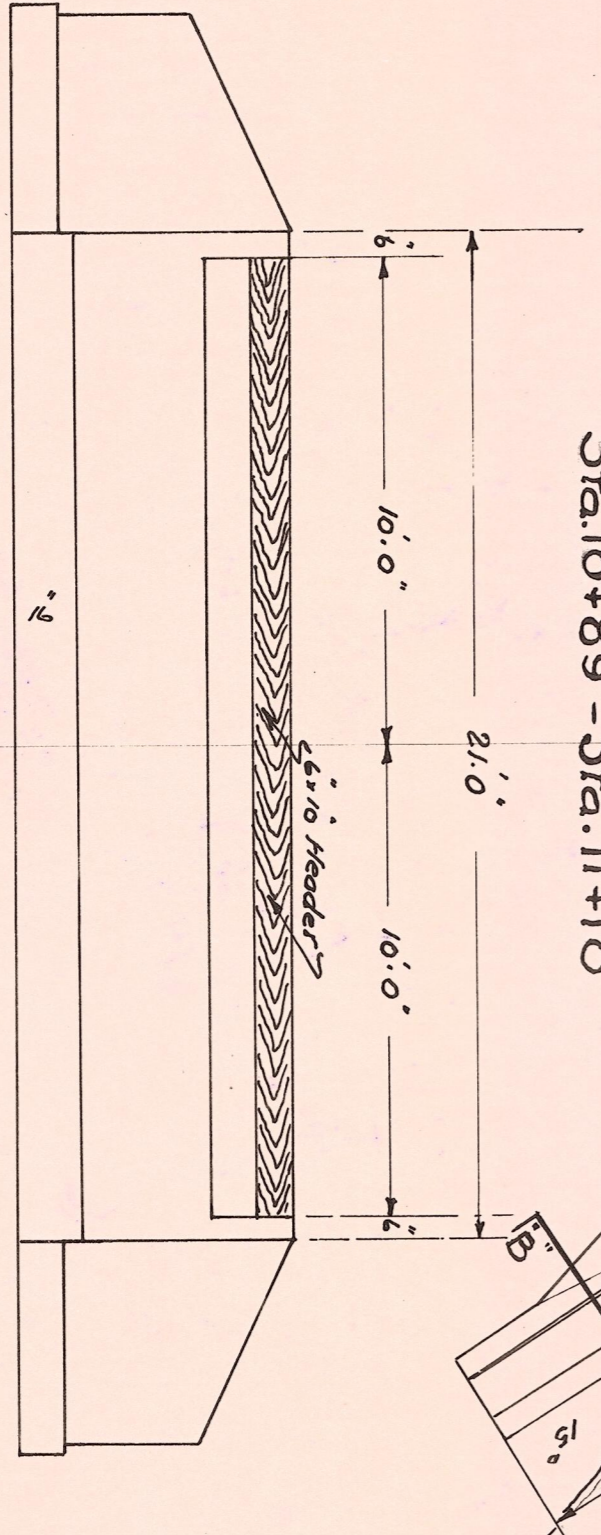


— **DETAIL OF HANDRAIL** —



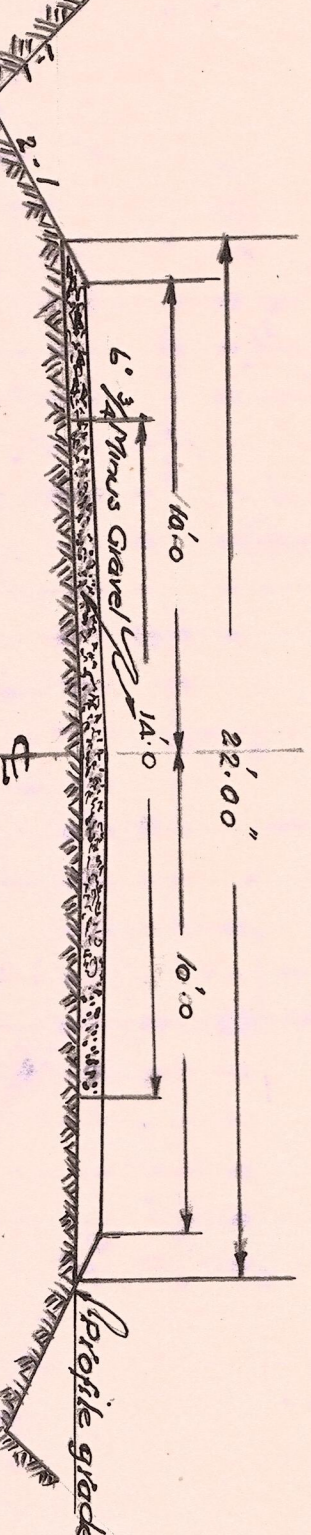
— **SECTION** —

— **PLAN** —
Sta. 10+89 - Sta. 11+10



— **ELEVATION** —

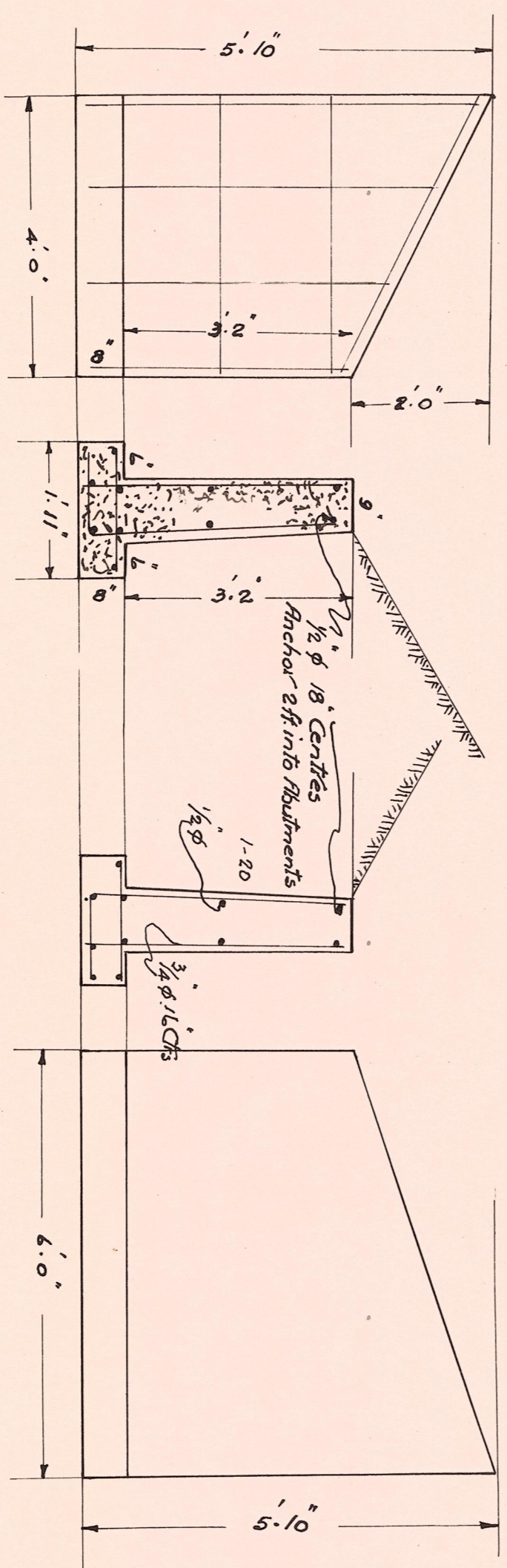
Scale 1/2" = 1' F.



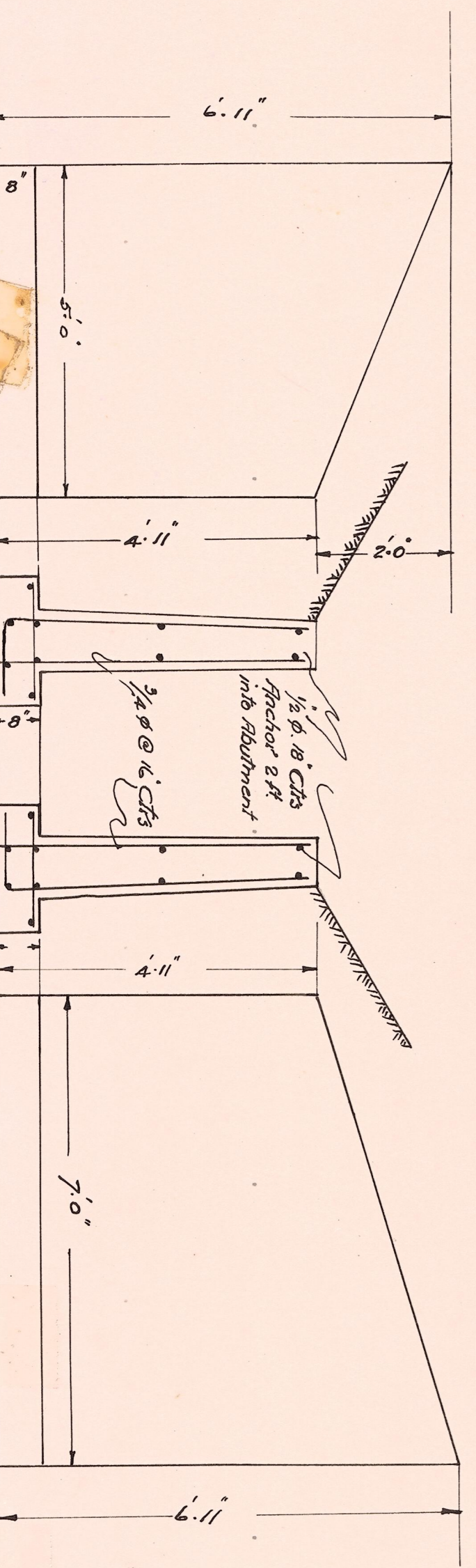
TYPICAL SECTION

— **SECTION AA** —

Scale 1/2" = 1' F.



— **SECTION BB** —

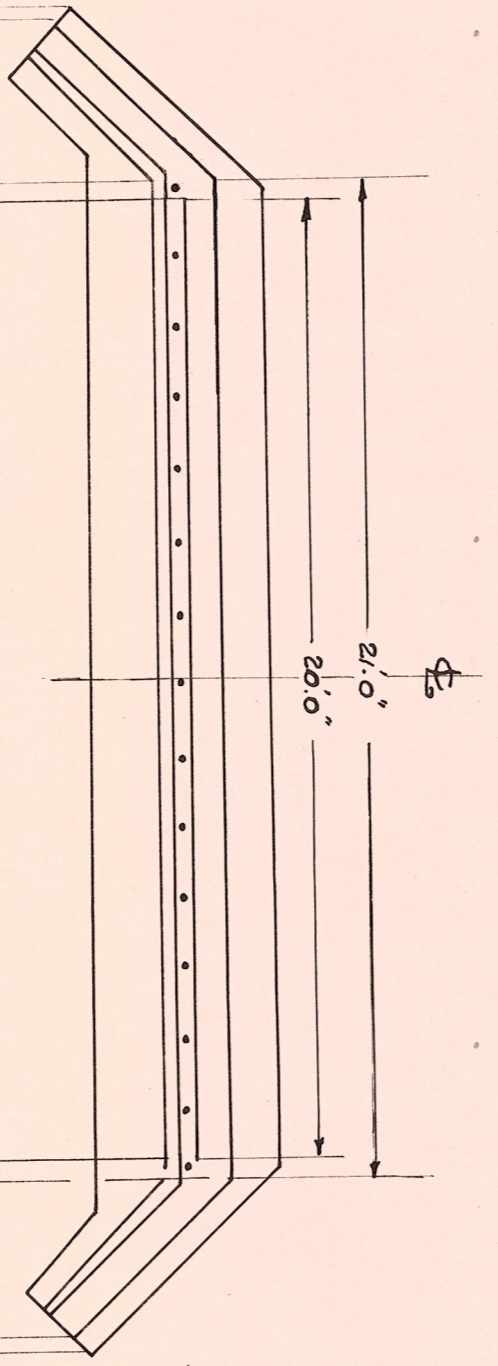


SECTION CC

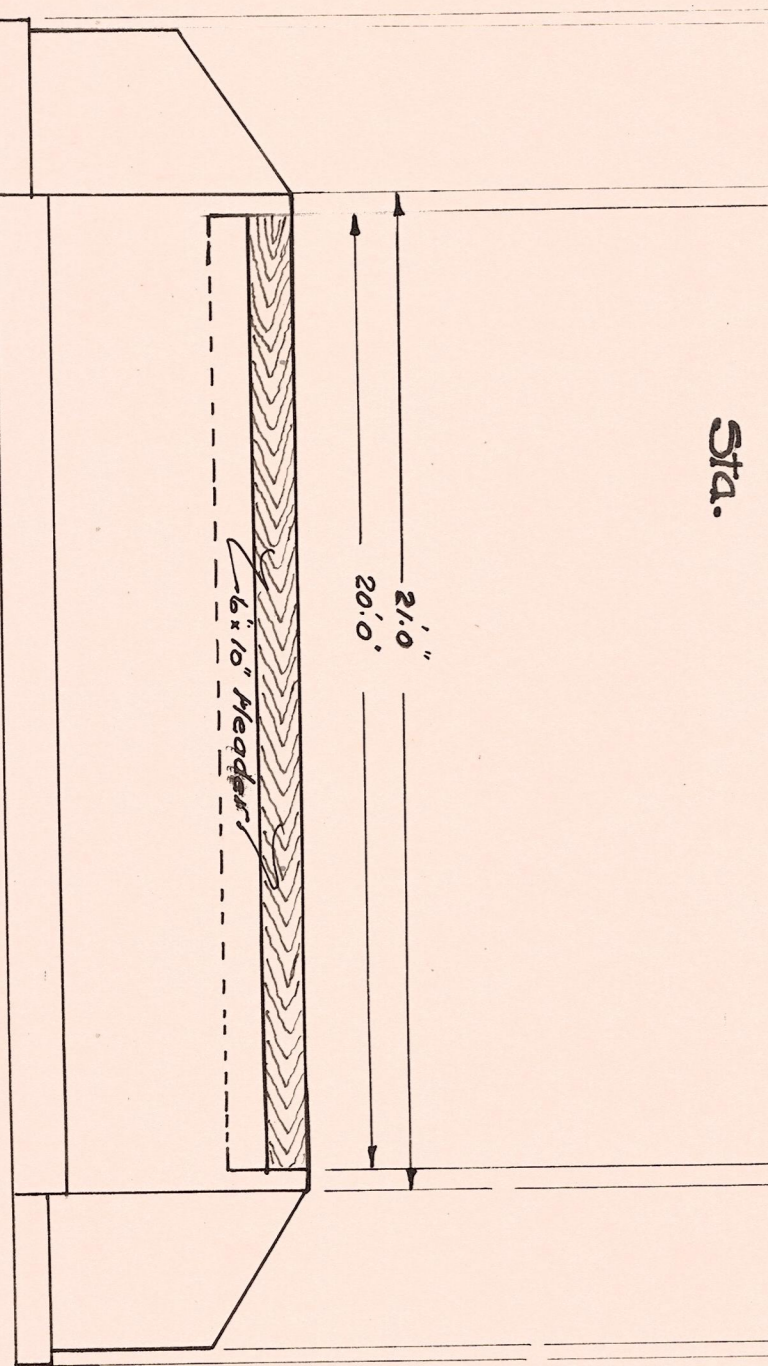
Scale 1/2" = 1' F.

SECTION DD

— **SECTION** —



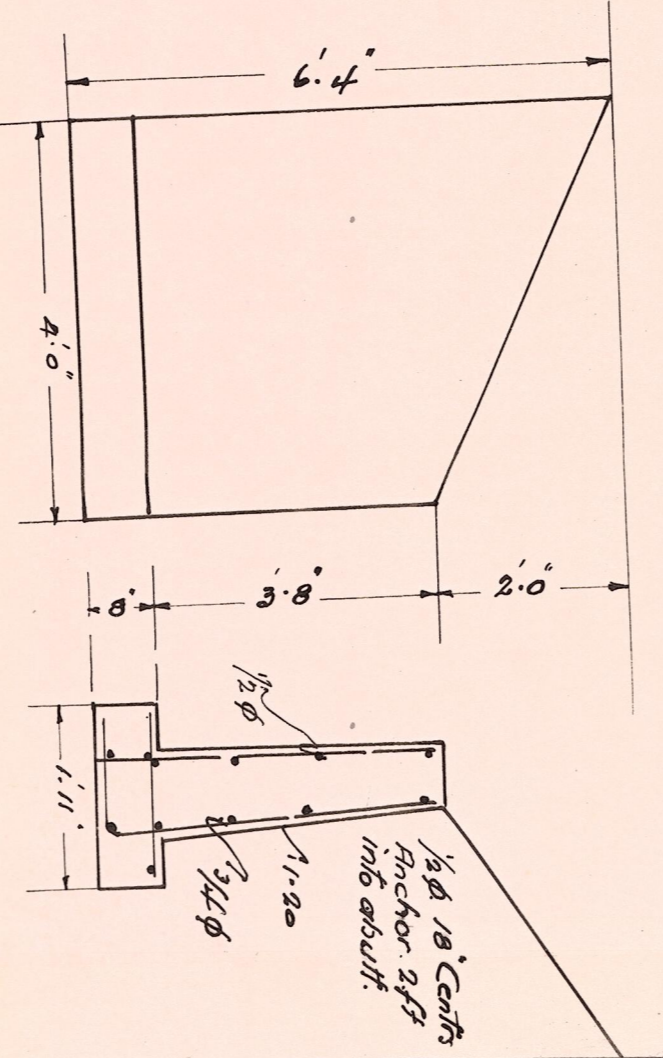
— **PLAN** —
Sta.



— **ELEVATION** —

Scale 1/2" = 1' F.

— **WING WALL** —



TOM HARREL ROAD
N^o 187
PLAN OF
TWO BRIDGES CASCADE CANAL.
KITKITAS COUNTY
APPROVED - MARCH 5 1937

R. P. Ryan
COUNTY ENGR.