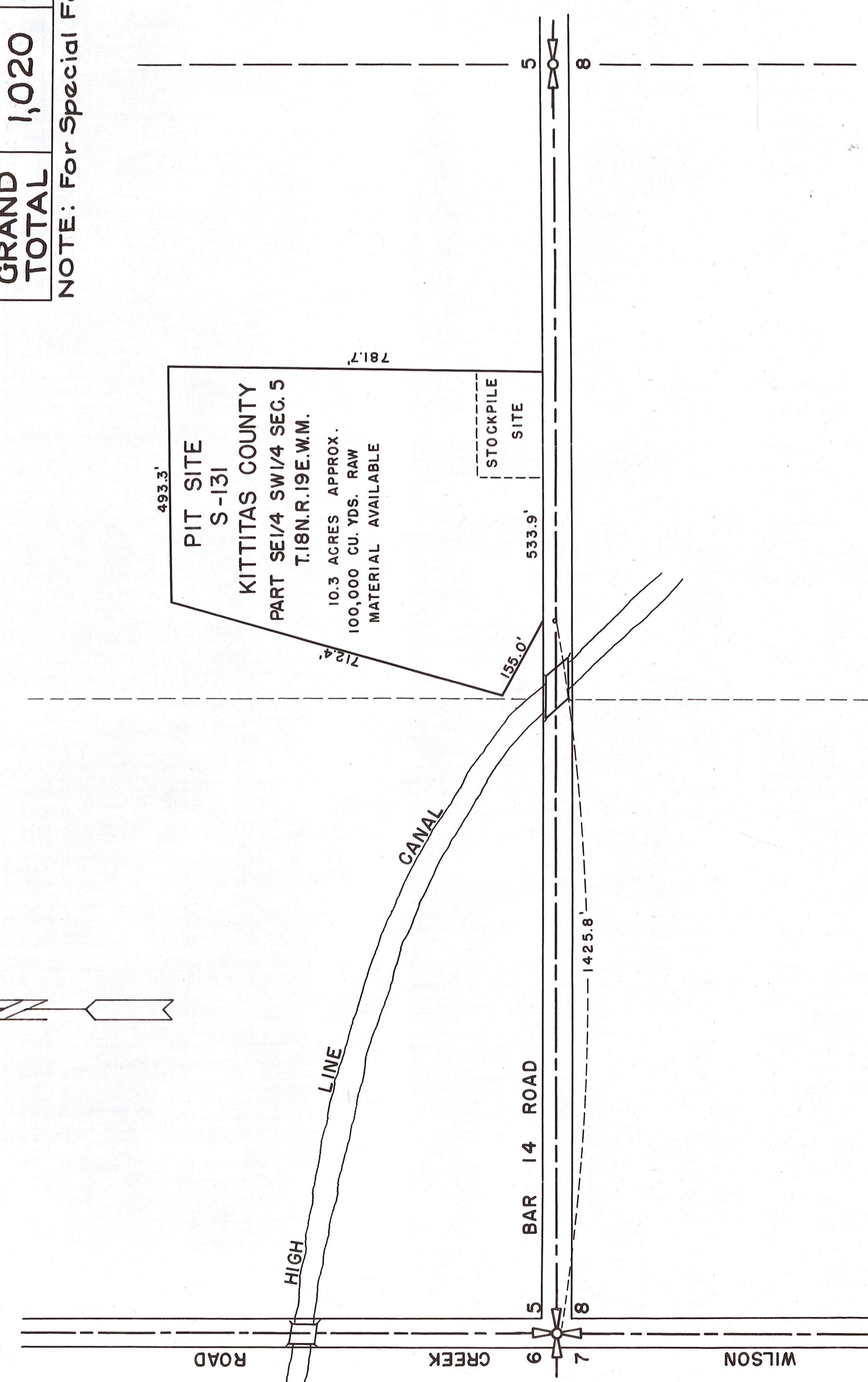
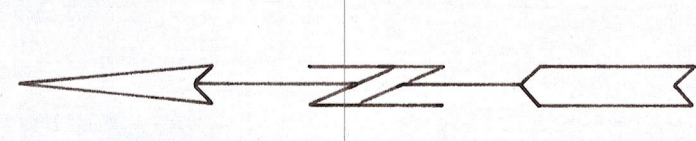
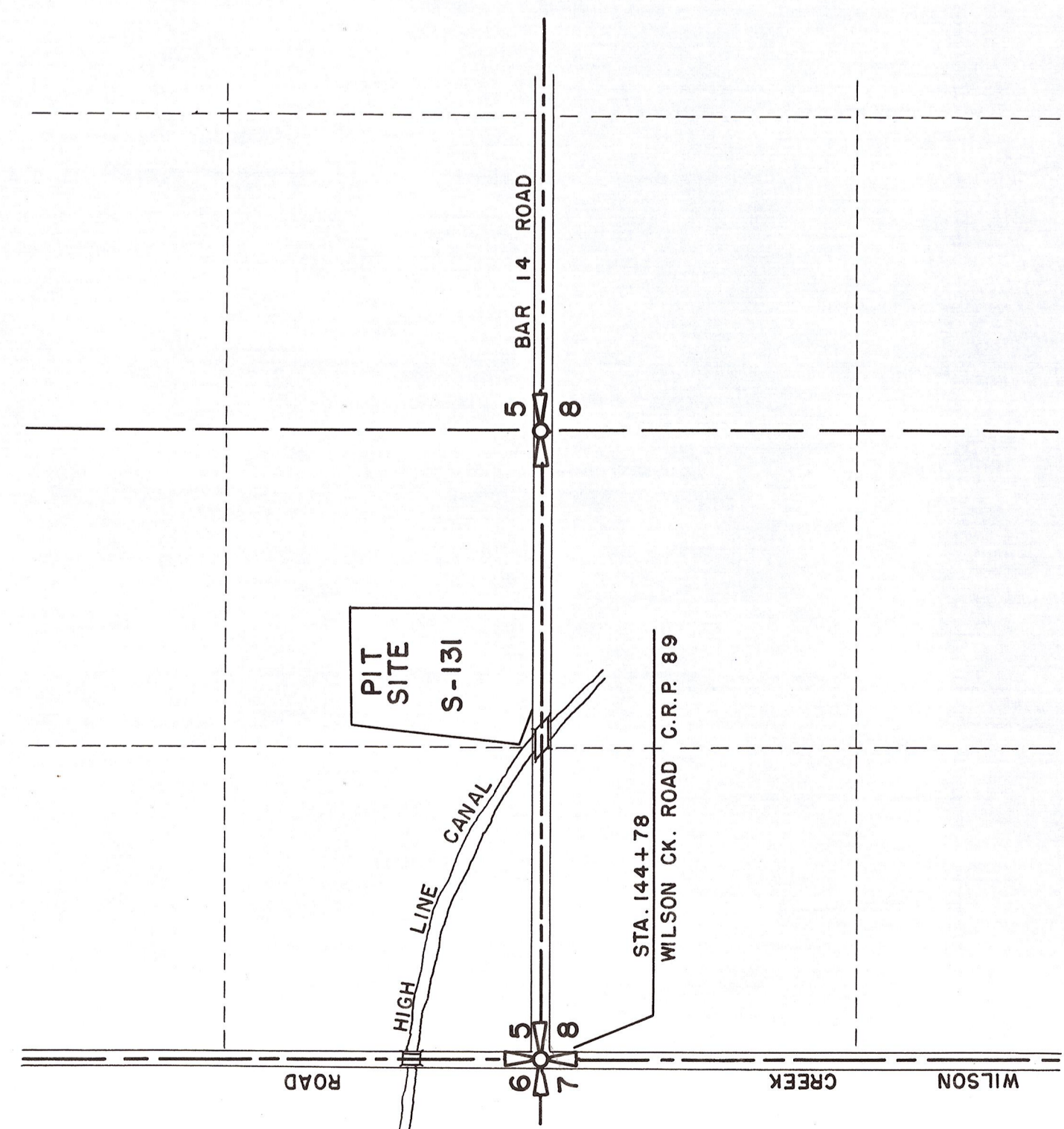


4 sets

13-10-1

VICINITY MAP T.18N.R.19E.W.M.

SCALE: 1" = 600'



SCALE: 1" = 200'

SNYDER RD. ( FRED SCHNEBLEY RD. ) 22-11

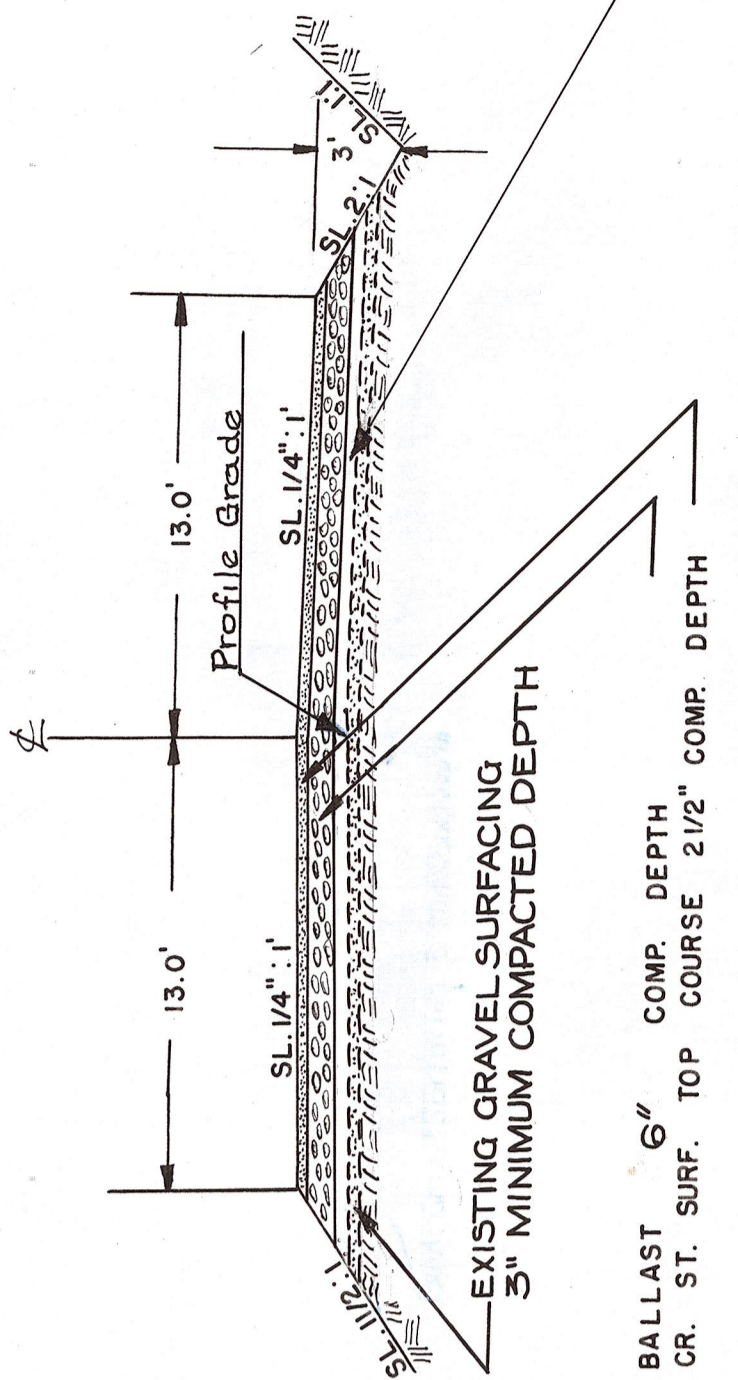
SUMMARY OF QUANTITIES

		TOTAL LENGTH: 31,730.4 LIN. FT. = 6.01 MILES								
		BALLAST	CR. STONE SURFACING	CR. STONE SURFACING	CR. STONE SURFACING	TOP COURSE	BALLAST	CRUSHED COVER STONE	IN STOCKPILE	SPECIAL BORROW
UNIT	M-GAL	TONS	TONS	TONS	TONS	TONS	TONS	TONS	TONS	TONS
STA. 134+50 TO STA. 300+75										
3(PART)	80	2,579	960							
4	170	5,891	2,150							1240
5	170	5,900	2,150							4845
6(PART)	120	4,155	1,505							1355
TOTAL	540	18,525	6,765							305
STA. 0+30 TO STA. 59+00 BK. =										
COUNTY PROJECT (WILSON CREEK ROAD)										
										7745
STA. 58+00 AHD. TO STA. 103+87.4 BK. =										
STA. 103+00 AHD. TO STA. 149+48										
1	170	8,165	2,500	1,725						
2	170	7,645	2,500	1,750						
3(PART)	140	6,065	2,050	1,485						4,300
TOTAL	480	21,875	7,050	4,960						4,300
GRAND TOTAL	1,020	40,400	7,050	11,725	12,000	4,300				7,745

NOTE: For Special Features See Special Provisions.

ROADWAY SECTION

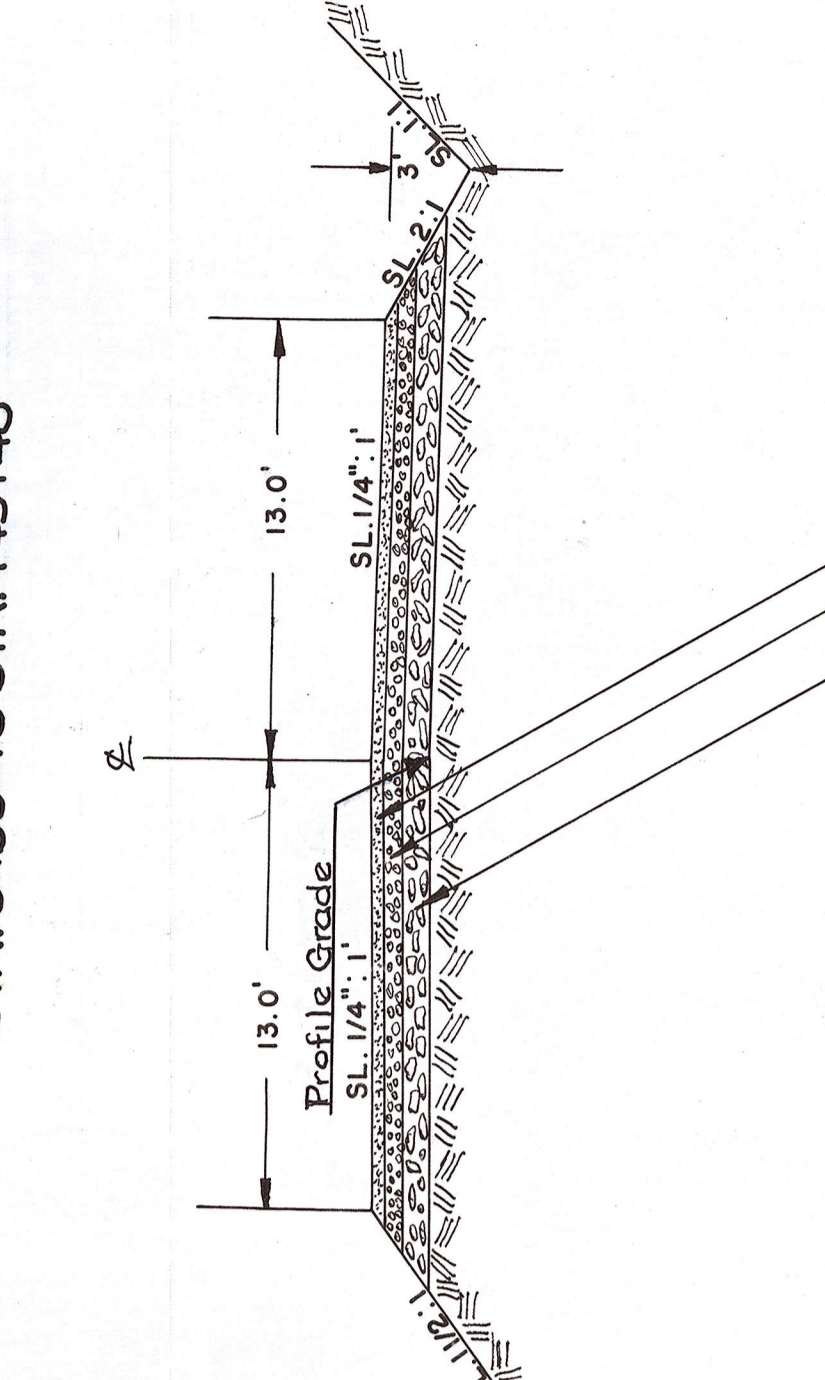
SCHNEBLEY ROAD  
26' CR. STONE SURFACING  
STA. 134+50 TO STA. 300+75



NOTE: Irregularities in subgrade and grade to be corrected with special borrow material.  
4" min. compacted depth Sta. 162+00 to Sta. 250+00

ROADWAY SECTION

WILSON CREEK ROAD  
26' CR. STONE SURFACING  
STA. 0+30 TO STA. 149+48



NOTE: Irregularities in subgrade and grade to be corrected with ballast material.

NOTE: ROADWAY TO BE SUPERELEVATED AND WIDENED ON CURVES. SEE STANDARD SHEET ATTACHED TO PLANS.

SCHNEBLEY & WILSON CREEK ROADS

COUNTY ROAD PROJECT NO. 89891  
WILSON CK. & SCHNEBLEY ROADS  
COUNTY ENGINEERS, KITTITAS COUNTY, WASH.  
ELLENSBURG, WASHINGTON

SHEET 1 OF 14 SHEETS  
*Joseph L. Hallgren*  
COUNTY ROAD ENGINEER

DATE: 12/1/55  
BY: PEYVISTON

24/55 Profiles Grade Added to Roadway Section & Title added.  
2/1/55 Min. depth of Spec. Borrow Sta. 142+00 to 250+00 omitted to Schnebley Road Section

TYPICAL ROADWAY INTERSECTION

CONT. 4891

