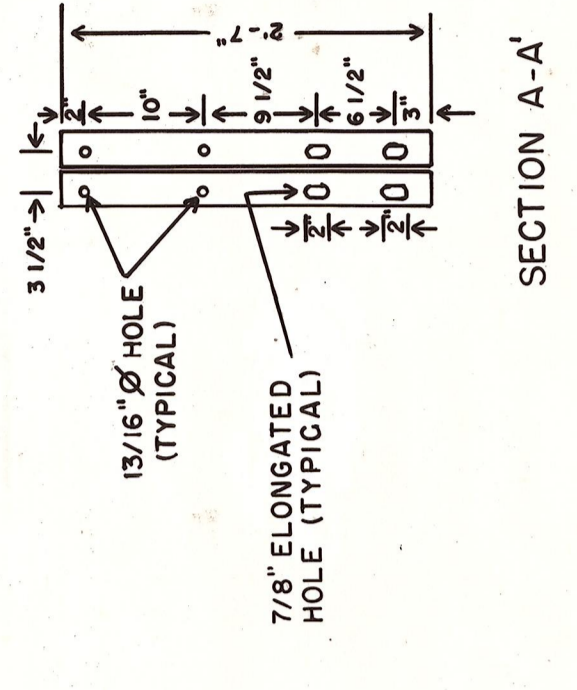
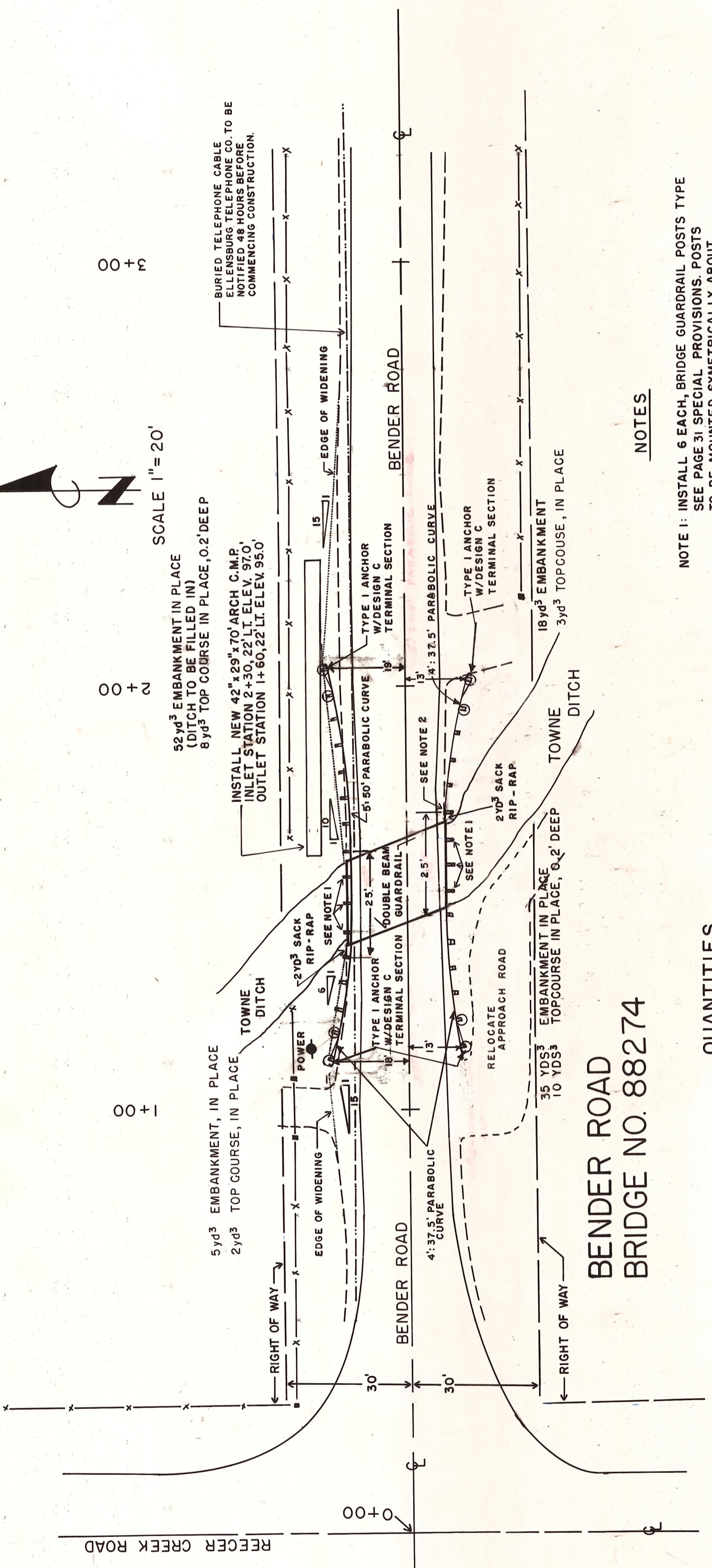


DRY CREEK ROAD
 BRIDGE NO. 88272

DETAIL A
 SCALE: 3/4" = 1'-0"



BRIDGE GUARDRAIL POST TYPE I



BENDER ROAD
 BRIDGE NO. 88274

QUANTITIES

| | |
|---|-----------------|
| TYPE I GUARDRAIL W/TERMINAL SECTIONS | 175 LINEAL FT. |
| WEAKPOST W-BEAM GUARDRAIL ANCHORAGE | 1 EACH |
| DOUBLE BEAM GUARDRAIL | 75.0 LINEAL FT. |
| TYPE I ANCHORS | 3 EACH |
| EMBANKMENT | 80 CUBIC YARDS |
| TOP COURSE | 5 CUBIC YARDS |
| BRIDGE GUARDRAIL POSTS TYPE I INSTALLED | 16 EACH |
| 18" φ CMP GALV | 30 LINEAL FEET |

NOTES

- NOTE 1: 16 EACH NEW BRIDGE GUARDRAILS TYPE I SEE DETAIL A
- NOTE 2: ANCHOR POSTS AND ANY POST NEAR WATER LINE ARE TO BE DUG IN SUCH A MANNER AS TO INSURE THAT NO DAMAGE WILL BE DONE TO WATER LINE

QUANTITIES

| | |
|---|-----------------|
| TYPE I GUARDRAIL W/TERMINAL SECTIONS | 13.8 LINEAL FT. |
| DOUBLE BEAM GUARDRAIL | 50 LINEAL FT. |
| EMBANKMENT IN PLACE | 110 CUBIC YARDS |
| TOP COURSE IN PLACE | 23 CUBIC YARDS |
| SACK RIP-RAP IN PLACE | 4 CUBIC YARDS |
| 42" x 29" ARCH CMP INSTALLED | 70 LINEAL FT. |
| BRIDGE GUARDRAIL POSTS TYPE I INSTALLED | 6 EACH |
| TYPE I ANCHOR | 4 EACH |

NOTES

- NOTE 1: INSTALL 6 EACH BRIDGE GUARDRAIL POSTS TYPE I SEE PAGE 31 SPECIAL PROVISIONS. POSTS TO BE MOUNTED SYMMETRICALLY ABOUT CENTER OF SPAN ON 6-3 SPACING.
- NOTE 2: THIS CORNER HAS CONCRETE THAT WILL BE REMOVED TO SET POSTS
- NOTE 3: EXISTING GUARDPOSTS AND RAIL TO BE REMOVED.



DEPT. OF PUBLIC WORKS
KITTITAS COUNTY
 ELLENSBURG, WASHINGTON
 VANTAGE HIGHWAY BRIDGE ET AL.
 APPROACH GUARDRAILS

SCALE: H 1"=20'
 V

DRAWN BY DLT DATE SEPT. 1981 SHEET 12 OF 14
 APPROVED: 4/27/83 DATE
 DIRECTOR OF PUBLIC WORKS