

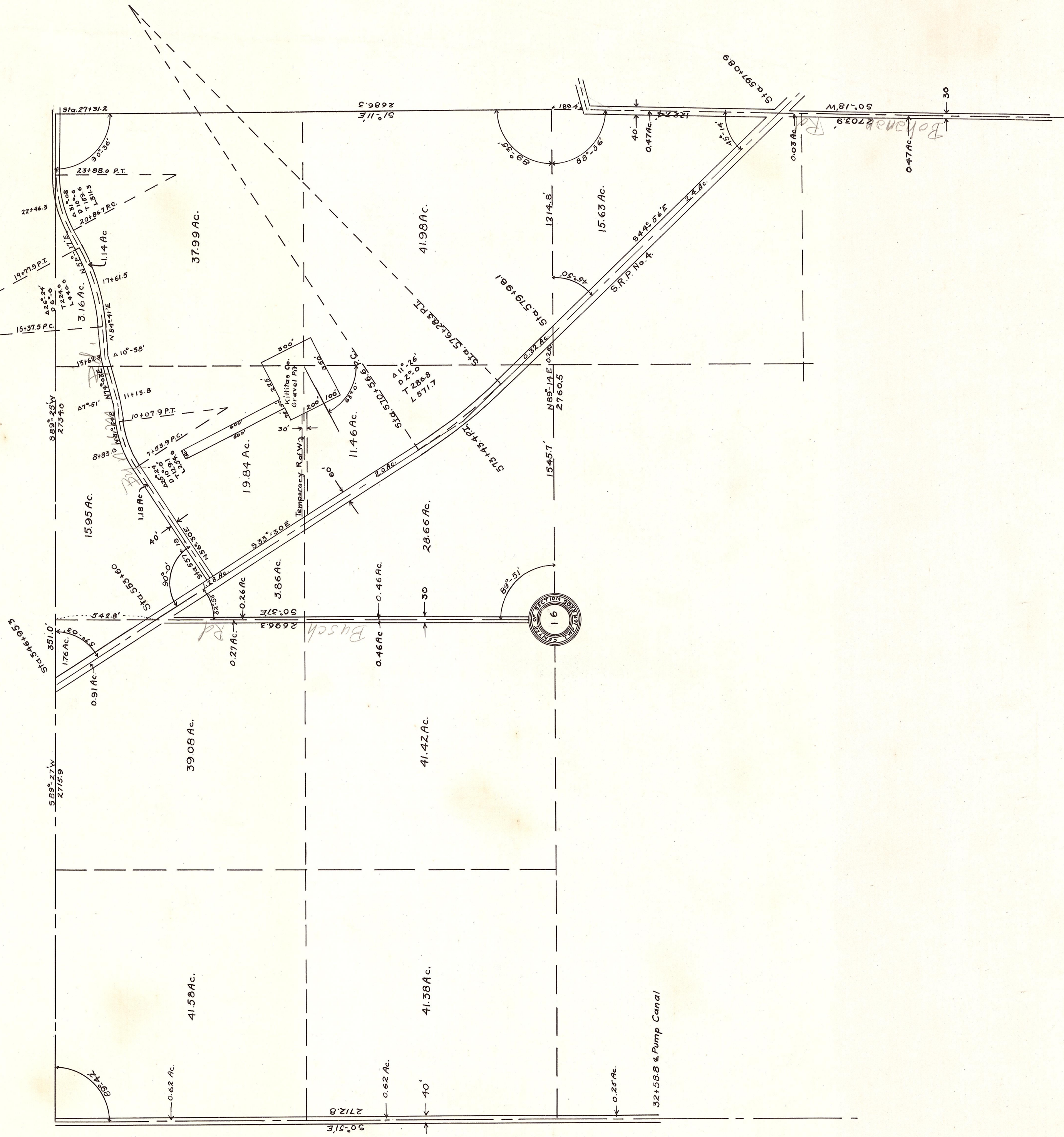


RIGHT OF WAY PLAT  
SECONDARY ROAD PROJECT NO.4.

SEC.16, T.16N. R.20E W.M  
KITITAS COUNTY

SCALE 1 IN. = 40 FT.

Handwritten: Road No. 92



CERTIFICATE

I, W.T. Bowman, Engineer of Kittitas County, do hereby certify that this map accurately represents the location of said Counties roads across section 16, township 16 north, range 20 east W.M.

Engineer Kittitas County.