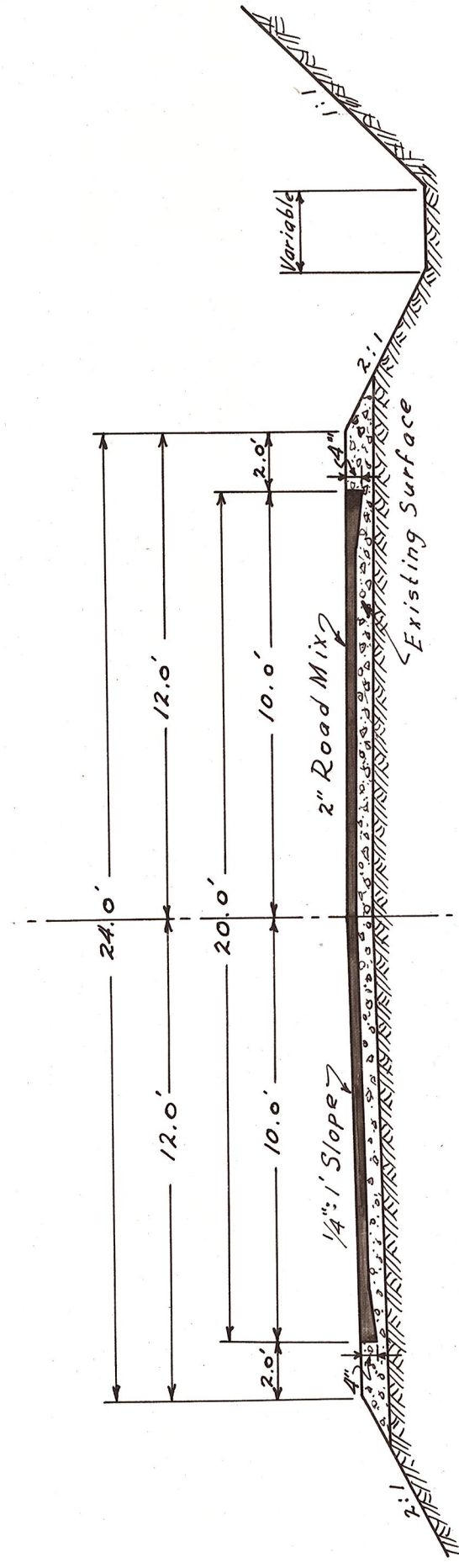
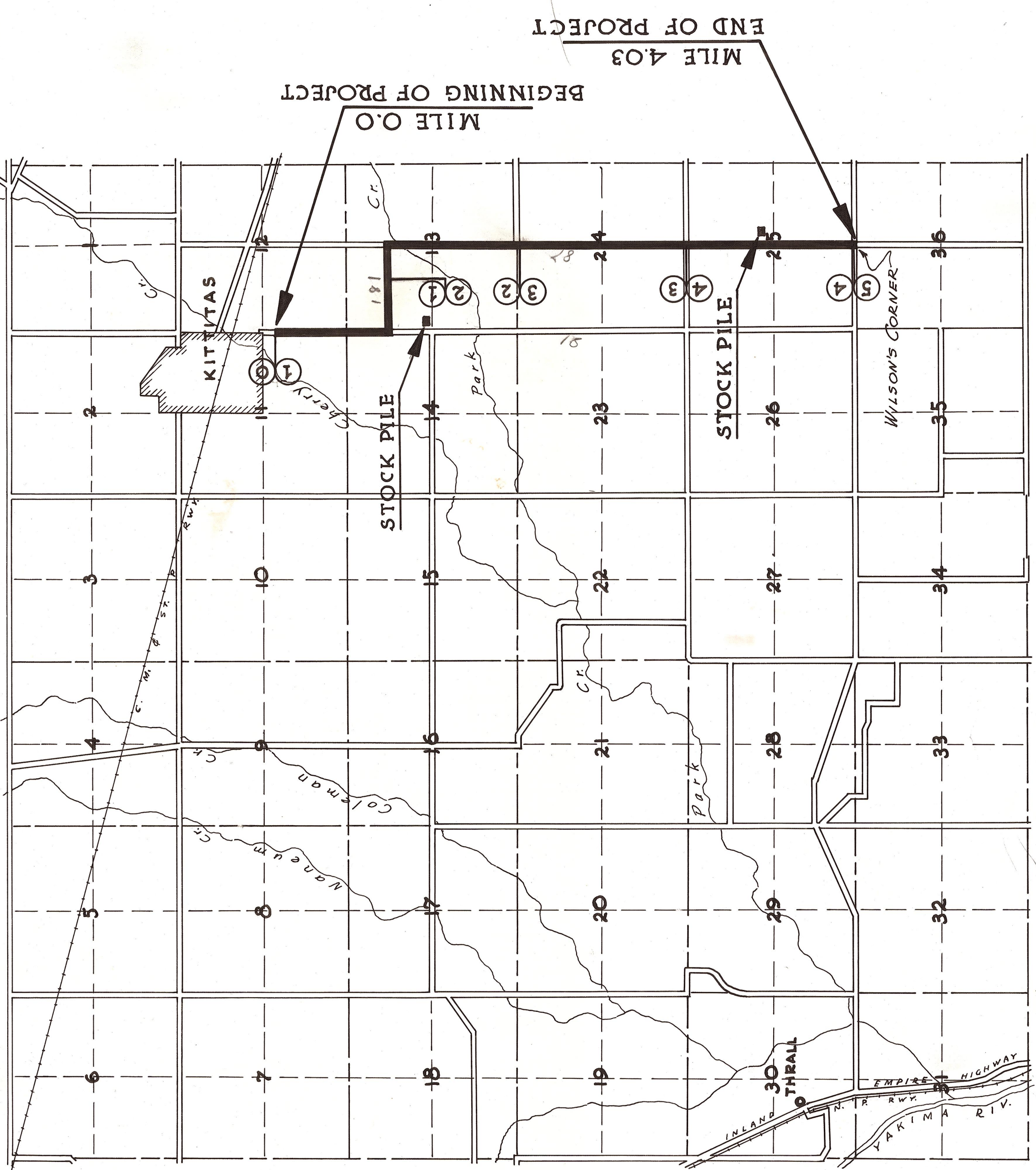


T 17N. R 19E.W.M.

Project No 17



TYPICAL SECTION

# SUMMARY

M.P. 0.0 TO M.P. 4.03 - KITITAS TO WILSON'S CORNER - 4.03 MILES						
MILE	PREPARATION AND FINISHING ROADWAY MILES	MINERAL AGGREGATE IN PLACE FROM STOCK PILE CU. YDS.	M.C.2. ROAD OIL		MIXING AND FINISHING MILES	WATER IN PLACE M GALS.
			TONS	MILES		
1	1.0	490	71.5	1.0	12.4	
2	1.0	490	71.5	1.0	12.4	
3	1.0	490	71.5	1.0	12.4	
4	1.0	490	71.5	1.0	12.4	
5 PART	.03	20	2.0	.03	.4	
<b>TOTALS</b>	<b>4.03</b>	<b>1980</b>	<b>288.0</b>	<b>4.03</b>	<b>50.0</b>	

W.P.A. - 95.0  
COUNTY - 193.0

KITITAS COUNTY  
STATE OF WASHINGTON  
COUNTY ROAD PROJECT NO. 17

Rd 87 181-81

APPROVED 1939  
 CHAIRMAN *Bill Sweeney*  
 MEMBER *Bill Sweeney*  
 MEMBER *Morris Johnson*  
 BOARD OF COUNTY COMMISSIONERS  
 COUNTY ROAD ENGR. *Bill Sweeney*