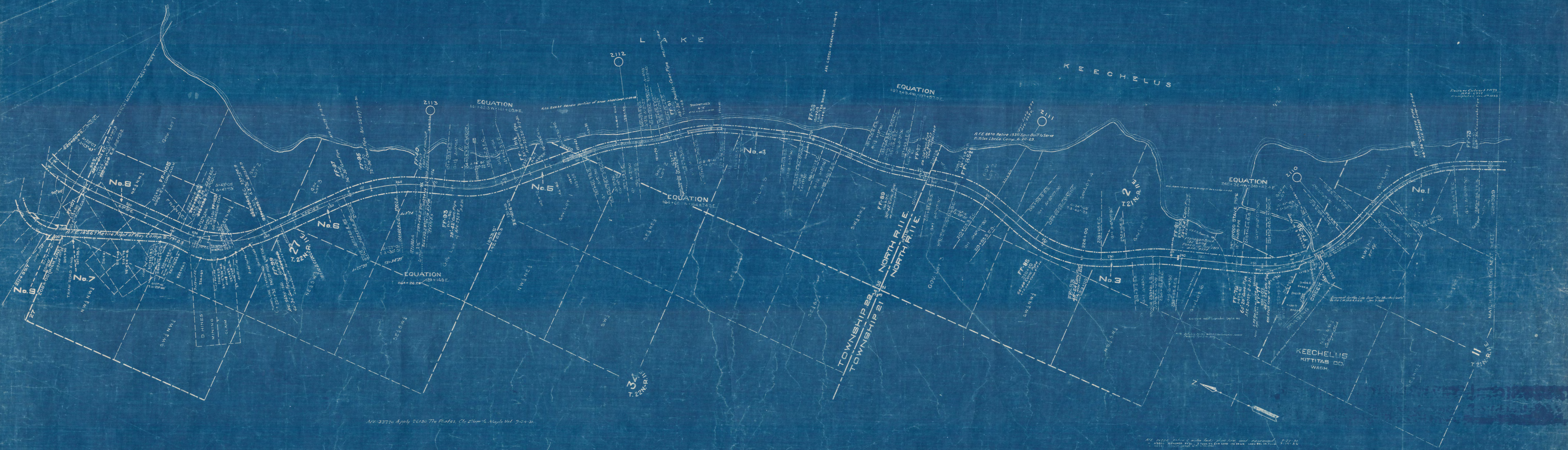


No.	GRANTOR	GRANTEE	INSTRUMENT	DATE	RECORD NUMBER	CUSTOMER'S NUMBER	REMARKS
1	N. P. Ry. Co.	C.M.&St. P. Ry. Co.	War. D. Release	Sept-16	31 71 112216	10745	
2	N. P. Ry. Co.	"	"	May 27-28	"	7325	
3	United States	C.M.&St. P. Ry. of Wash.	Grant	Apr 27-28	"	7319	
4	N. P. Ry. Co.	C.M.&St. P. Ry. Co.	War. D.	Sept-16	31 71 112216	10745	
5	United States	C.M.&St. P. Ry. of Wash.	Grant	Oct 26-30	"	7631	
6	N. P. Ry. Co.	C.M. & St. P. Ry. Co.	Agreement	Oct 17-13	"	7331	
7	Flanagan Mining Co.	Emilio Hines	War. D.	Nov 13-09	20 315 112110	7489	
8	N. P. Ry. Co.	C.M. & St. P. Ry. of Wash.	War. D.	Sept-16	31 71 112216	7021	
9	N. P. Ry. Co.	C.M. & St. P. Ry. of Wash.	War. D.	Nov-13	20 357 112213	7571	
10	N. P. Ry. Co.	C.M. & St. P. Ry. of Wash.	War. D.	Oct 17-13	"	7331	
11	Flanagan Mining Co.	Emilio Hines	War. D.	Nov-13	20 357 112213	7489	
12	United States	C.M.&St. P. Ry. of Wash.	Grant	Apr 17-28	"	7631	



AFE 33770 Apply 26180 The Plates, Cle Elum Co. Map, Vol. 9-24-31.

All 2224 show 2 mile long, plus line and easement. 7-21-38
 11 2224 2 mile long, plus line and easement. 7-21-38

RIGHT-OF-WAY AND TRACK MAP
 CHICAGO, MILWAUKEE & ST. PAUL RY. CO.
 OPERATED BY THE
 CHICAGO, MILWAUKEE & ST. PAUL RY. CO.
 COAST DIVISION MAIN LINE & HIGH LINE
 STATION 288+39.9 TO STATION 211+89.7
 SCALE IN ACROSS JUNE 30, 1938
 CHIEF OF CIVIL ENGINEERS
 CHICAGO, ILLINOIS

Sheet No. 66 of 77 sheets of Chicago, Milwaukee & St. Paul Ry. Main Line & High Line
 from survey station 288+39.9 to survey station 211+89.7