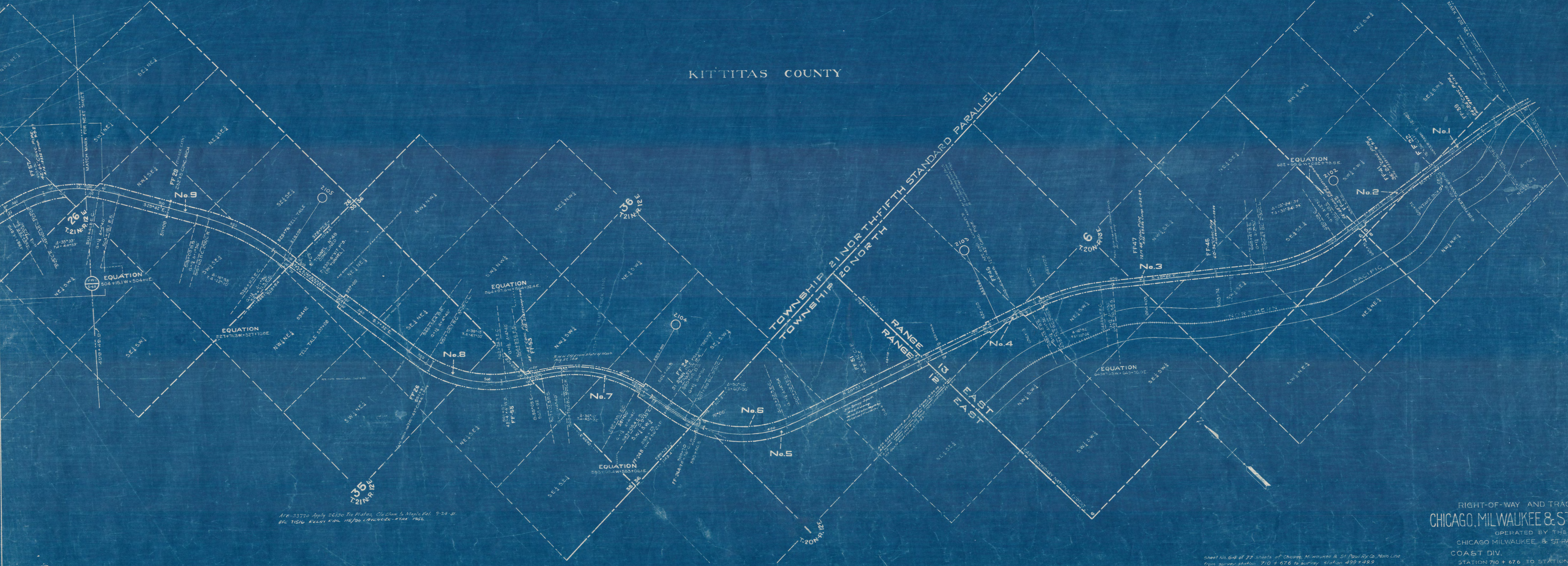


NO	GRANTOR	GRANTEE	INSTRUMENT	DATE	RECORD	CUSTODIAN'S NUMBER	REMARKS
1	Cascade Lbr. Co.	C.N.&St.P.Ry.of Wash.	War. D	Aug 708	18 93 9:19:08	6682	
2	Northwestern Impr. Co.	"	War. D	Rev 806	18 95 12:14:07	6683	
3	Cascade Lbr. Co.	"	War. D	Aug 708	18 93 9:19:08	6682	
4	United States	"	No Deed			6682	Title held by adverse possession.
5	United States	"	Grant	Apr 1708		6651	
6	Kittitas Co.	CMASUPRY.	Order	Sep 1510		6652	
7	State of Wash.	C.N.&St.P.Ry.Co.of Wash.	R/W Ctr.	Oct 806	18 169 10:26:08	7433	
8	NPRyCo.	"	War. D	Dec 2406	14 416 2:15:07	7367	
9	United States	"	Grant	Apr 1708		7401	

KITTITAS COUNTY



APP-33770 Apply 26130 the Plates, Column to Map's Vol. 9-24-31.  
 APP-11516 KELLY KIM 115/00 CONWEL-474K 1952

RIGHT-OF-WAY AND TRACK MAP  
**CHICAGO, MILWAUKEE & ST. PAUL RY. CO.**  
 OPERATED BY THE  
 CHICAGO MILWAUKEE & ST. PAUL RY. CO.  
 COAST DIV. MAIN LINE  
 STATION 710 + 67.6 TO STATION 499 + 49.9  
 SCALE: 1"=400' JUNE 30, 1915  
 OFFICE OF CHIEF ENGINEER  
 CHICAGO, ILLINOIS

Sheet No. 64 of 77 sheets of Chicago, Milwaukee & St. Paul Ry. Co. Main Line  
 from survey station 710 + 67.6 to survey station 499 + 49.9

Valuation Engineer