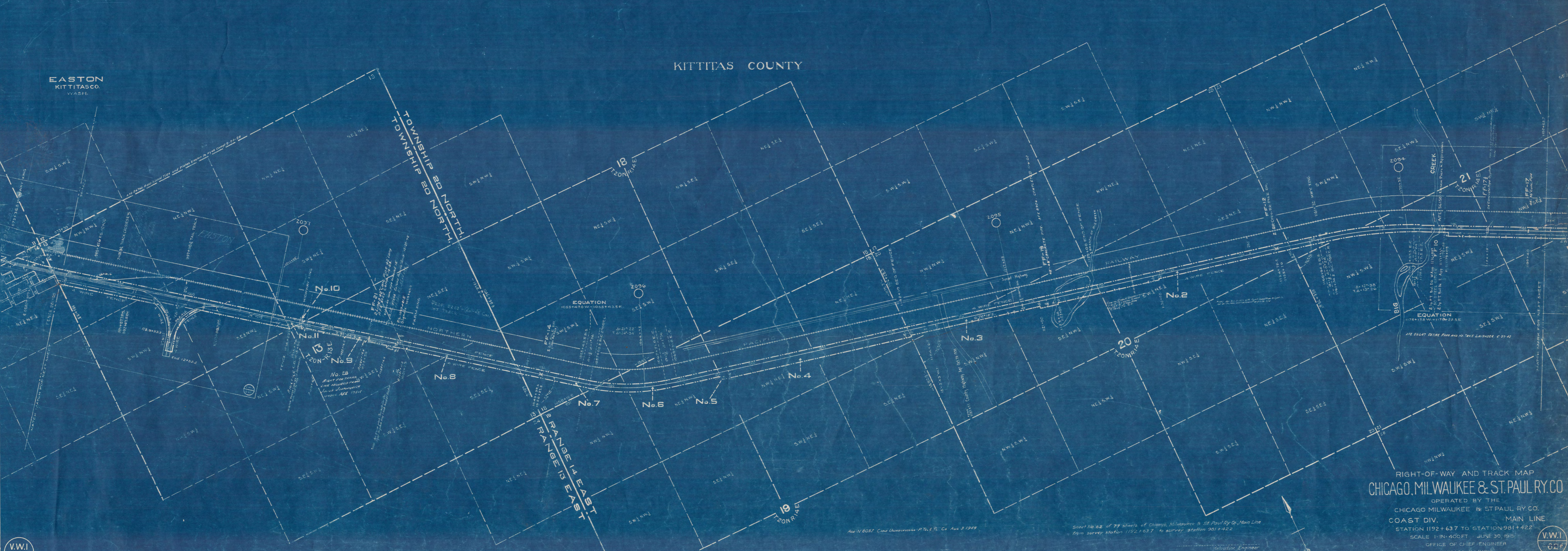


APC-33710 Apply 20130 TPL Plates, Column 4, Maple Mat. 7-24-31
 44370 Method P.F. with 2 span Cre. Bal. Buck P. #18-34
 APC-33710 Apply 20130 TPL Plates, Column 4, Maple Mat. 7-24-31
 APC-33710 Apply 20130 TPL Plates, Column 4, Maple Mat. 7-24-31
 APC-33710 Apply 20130 TPL Plates, Column 4, Maple Mat. 7-24-31

NO.	GRANTOR	GRANTEE	INSTRUMENT	DATE	RECORD	CUSTODIAN'S NUMBER	REMARKS
2	W. Richmond & Wf.	C.W. & St. P. Ry. of Wash.	War. D.	Dec 4-06	14 54 9:10:06	7320	
3	O.S. Davis & Wf.	"	War. D.	Aug 1-06	14 13 8:4:06	7321	
"	"	"	War. D.	Aug 7-07	16 235 10:11:07	7322	
4	Northwestern Impro. Co.	"	War. D.	Nov 5-05	14 325 1:14:07	6489	
5	Comm. Kittitas Co.	"	Order	May 7-07	Soc'y's Office,	607	Highway Crossing
6	R. L. McGinnis & Wf.	"	War. D.	Aug 23-06	14 04 8:28:06	6953	Milwaukee, Wis.
7	"	"	War. D.	Aug 24-06	14 03 9:10:06	7301	
8	"	"	War. D.	Aug 10-06	14 09 9:10:06	6952	
9	"	"	War. D.	Aug 23-06	14 04 8:28:06	6953	
10	Comm. Kittitas Co.	"	Order	May 7-07	Soc'y's Office,	607	Highway Crossing.
11	Northwestern Impro. Co.	"	War. D.	Nov 8-06	14 325 1:14:07	6429	

KITTITAS COUNTY

EASTON
KITTITAS CO.
WASH.



RIGHT-OF-WAY AND TRACK MAP
CHICAGO, MILWAUKEE & ST. PAUL RY. CO.
 OPERATED BY THE
 CHICAGO MILWAUKEE & ST. PAUL RY. CO.
 COAST DIV. MAIN LINE
 STATION 1192+63.7 TO STATION 981+42.2
 SCALE 1"=400 FT. JUNE 30, 1915
 OFFICE OF CHIEF ENGINEER
 CHICAGO, ILLINOIS