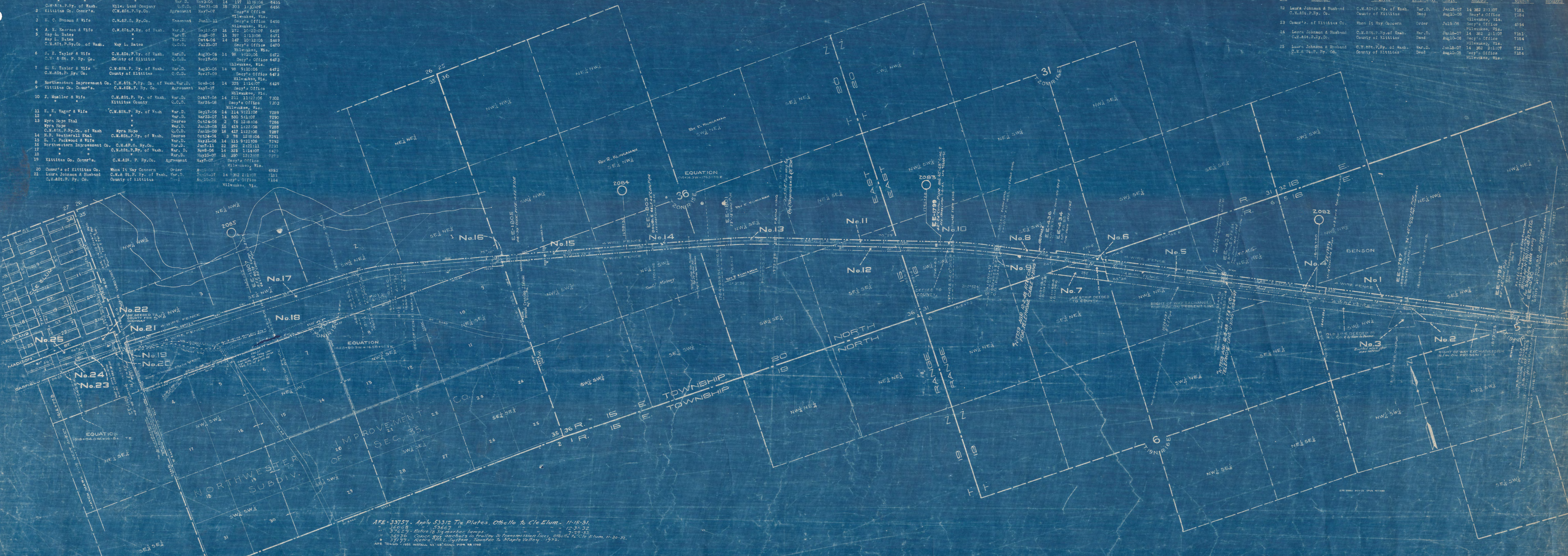


NO.	GRANTOR	GRANTEE	INSTRUMENT	DATE	RECORD	CORRELATION'S NUMBER	REMARKS
1	F. W. Hanson & Wife	C.M.&St.P.Ry. of Wash.	W.D.	Jul10-07	15 221 103107	6454	
2	C.M.&St.P.Ry. of Wash.	Milw. Land Company	W.D.	Nov3-06	14 197 113906	6455	
3	Kittitas Co. Comm'rs.	C.M.&St.P.Ry. Co.	Q.C.D.	Dec31-08	18 303 113009	6456	
4	H. C. Hanson & Wife	C.M.&St.P.Ry. Co.	W.D.	Jun11-11	Secy's Office		
5	A. E. Hanson & Wife	C.M.&St.P.Ry. of Wash.	W.D.	May12-07	15 272 1012307	6457	
6	May L. Bates	"	W.D.	Aug9-07	16 397 111309	6471	
7	May L. Bates	"	W.D.	Oct4-06	14 147 1012106	6469	
8	C.M.&St.P.Ry. Co. of Wash.	May L. Bates	Q.C.D.	Jul31-07	Secy's Office	6470	
9	S. E. Taylor & Wife	C.M.&St.P.Ry. of Wash.	W.D.	Aug30-06	14 98 910106	6472	
10	C.M. & St. P. Ry. Co.	County of Kittitas	Q.C.D.	Nov19-09	Secy's Office	6473	
11	S. E. Taylor & Wife	C.M.&St.P.Ry. of Wash.	W.D.	Aug30-06	14 98 910106	6472	
12	C.M.&St.P.Ry. Co.	County of Kittitas	Q.C.D.	Nov19-09	Secy's Office	6473	
13	Northwestern Improvement Co.	C.M.&St.P.Ry. Co. of Wash.	W.D.	Nov9-06	15 223 111307	6429	
14	Kittitas Co. Comm'rs.	C.M.&St.P.Ry. Co.	Agreement	May7-07	Secy's Office		
15	J. Muller & Wife	C.M.&St.P.Ry. of Wash.	W.D.	Oct17-06	14 211 1112106	7302	
16	"	Kittitas County	Q.C.D.	Nov26-08	Secy's Office	7303	
17	E. E. Nagor & Wife	C.M.&St.P.Ry. of Wash.	W.D.	Sep17-06	14 114 912106	7289	
18	"	"	W.D.	Mar22-07	14 500 911107	7290	
19	Myra Hope Etal	"	Deed	Oct2-06	3 76 12-18-06	7286	
20	Myra Hope	"	W.D.	Jan18-08	16 419 1121-08	7288	
21	H.R. Packwood et al.	Myra Hope	Q.C.D.	Jan18-08	16 417 1121-08	7287	
22	S. T. Packwood & Wife	C.M.&St.P.Ry. of Wash.	Deed	Oct21-06	3 76 12-21-06	7291	
23	Northwestern Improvement Co.	C.M.&St.P.Ry. Co.	W.D.	May7-11	22 392 210111	7291	
24	"	C.M.&St.P.Ry. of Wash.	W.D.	Nov9-06	14 323 211407	6429	
25	"	"	W.D.	May10-07	16 287 212107	7290	
26	Kittitas Co. Comm'rs.	C.M.&St.P.Ry. Co.	Agreement	May7-07	Secy's Office		
27	Comm'rs of Kittitas Co.	When It May Concern	Order	Aug10-06	Milwaukee, Wis.	4953	
28	Laura Johnson & Husband	C.M.&St.P.Ry. of Wash.	W.D.	Jan18-07	14 382 211107	7181	
29	C.M.&St.P.Ry. Co.	County of Kittitas	W.D.	Aug10-06	Secy's Office	7184	

NO.	GRANTOR	GRANTEE	INSTRUMENT	DATE	RECORD	CORRELATION'S NUMBER	REMARKS
32	Laura Johnson & Husband C.M.&St.P.Ry. Co.	C.M.&St.P.Ry. of Wash. County of Kittitas	W.D. Deed	Jan18-07 Aug10-06	14 382 211107 Secy's Office	7181 7184	
33	Comm'rs. of Kittitas Co.	When It May Concern	Order	Jul9-08	Secy's Office		4994
34	Laura Johnson & Husband C.M.&St.P.Ry. Co.	C.M.&St.P.Ry. of Wash. County of Kittitas	W.D. Deed	Jan18-07 Aug10-06	14 382 211107 Secy's Office	7181 7184	
35	Laura Johnson & Husband C.M.&St.P.Ry. Co.	C.M.&St.P.Ry. of Wash. County of Kittitas	W.D. Deed	Jan18-07 Aug10-06	14 382 211107 Secy's Office	7181 7184	



AFE-33757. Apply 53312 Tie Plates, Otello to Cle Elum - 11-15-31.
 " 36058 " " " " " " " 12-31-32.
 " 37629 Retire 18 1/2" markers lamps.
 " 36936 Corner sign dispatches to tralley & transmission lines, Otello to Cle Elum, 11-30-32.
 " 37199 Retire "R.L. System" Trough to Maple Valley. 1932.
 AFE 120000 - 1932 INSTALL 62 " 62" CONIC PIPE 22 1/2"

RIGHT-OF-WAY AND TRACK MAP
 CHICAGO, MILWAUKEE & ST. PAUL RY. CO.
 OPERATED BY THE
 CHICAGO, MILWAUKEE & ST. PAUL RY. CO.
 COLUMBIA DIV. MAIN LINE
 STATION 1618 +82.7 TO STATION 1614 +77.3
 SCALE: 1" = 400 FT. JUNE 30, 1915
 OFFICE OF CHIEF ENGINEER
 CHICAGO, ILLINOIS

Sheet No. 59 of 77 sheets of Chicago, Milwaukee & St. Paul Ry. Co. Main Line

from survey station 1878 +82.7 to survey station 1614 +77.3

Validation Engineer