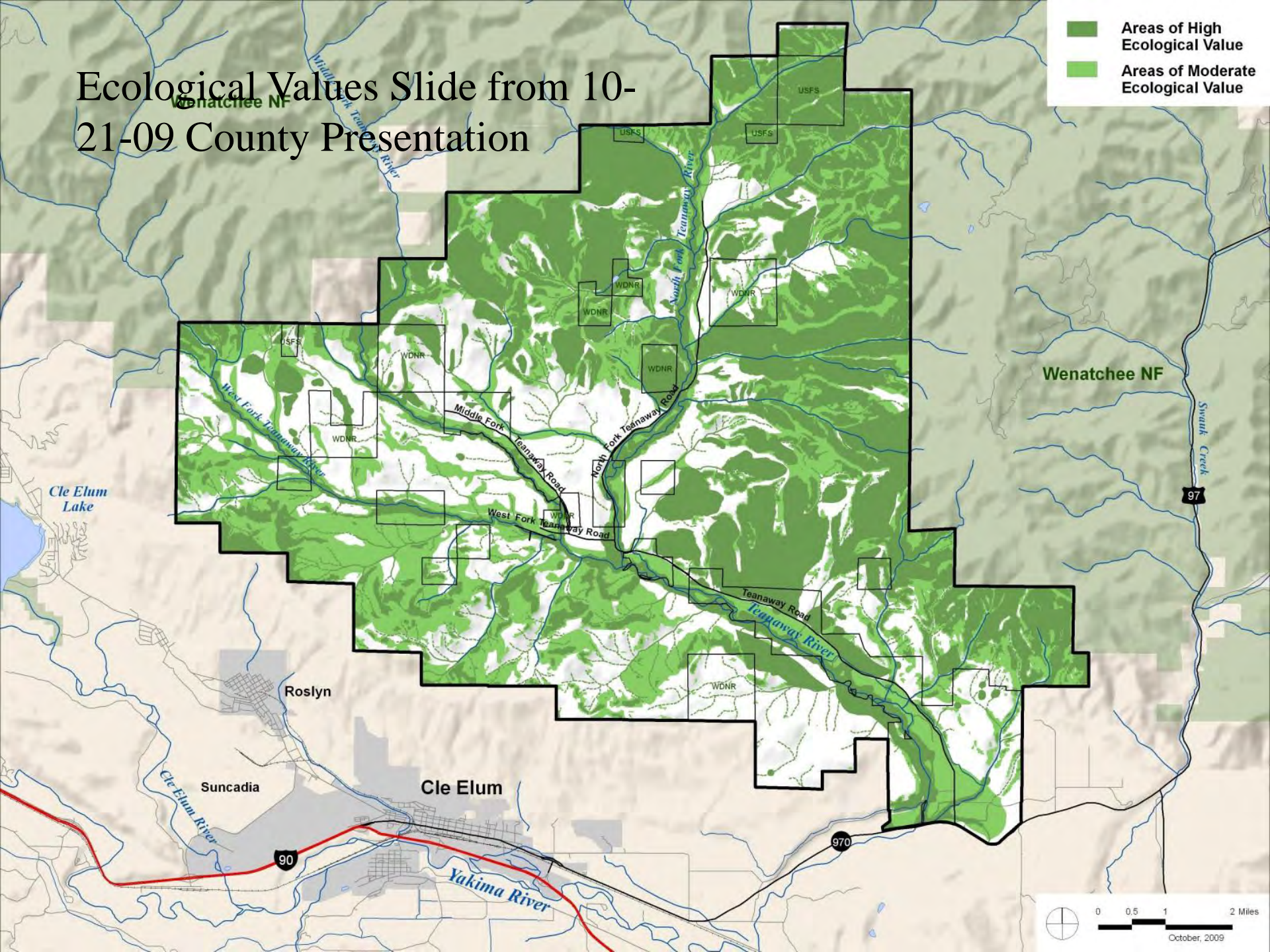


# Ecological Values Slide from 10-21-09 County Presentation

- Areas of High Ecological Value
- Areas of Moderate Ecological Value



Wenatchee NF

Cle Elum Lake

Roslyn

Suncadia

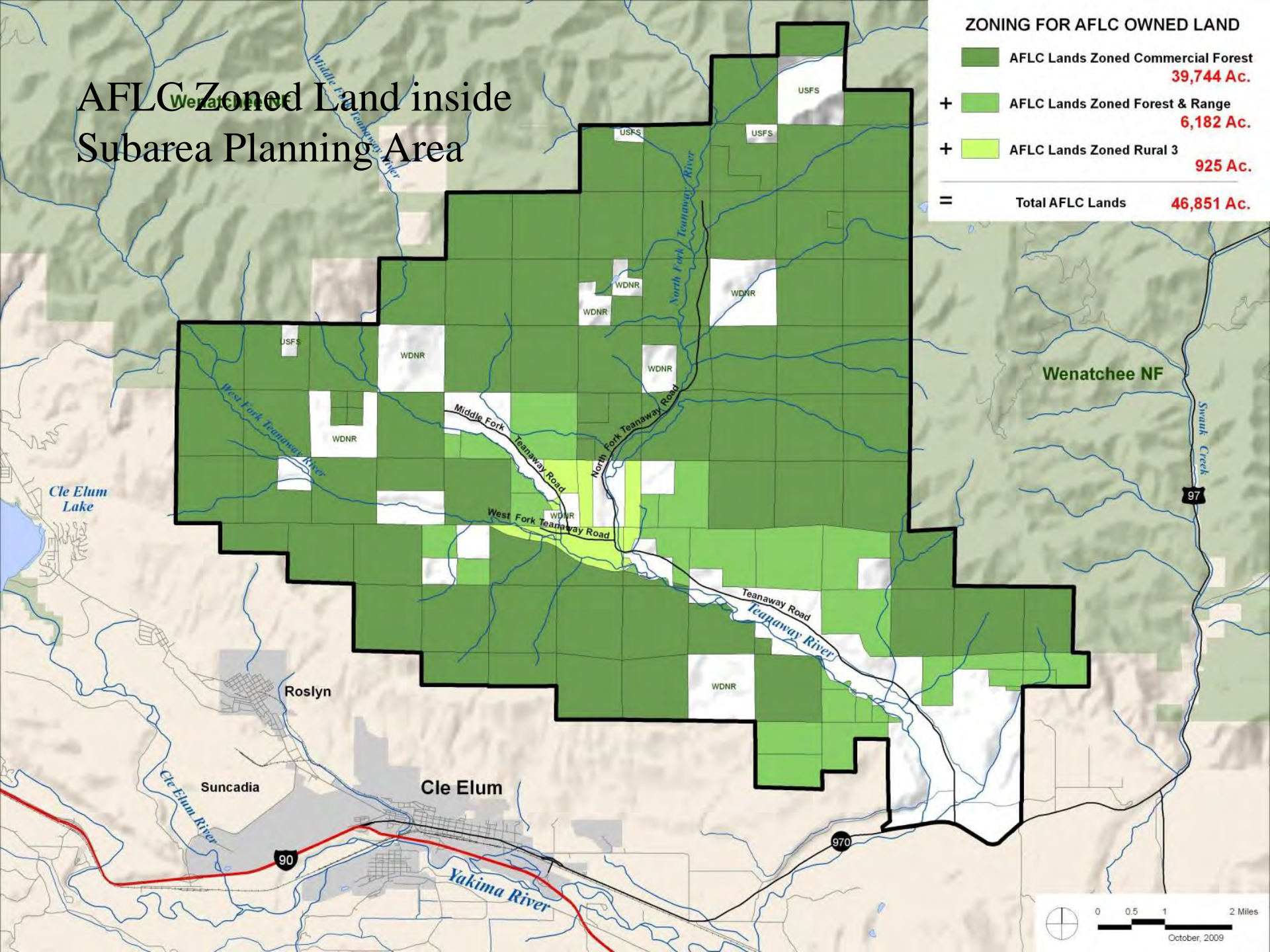
Cle Elum

Yakima River

# AFLC Zoned Land inside Subarea Planning Area

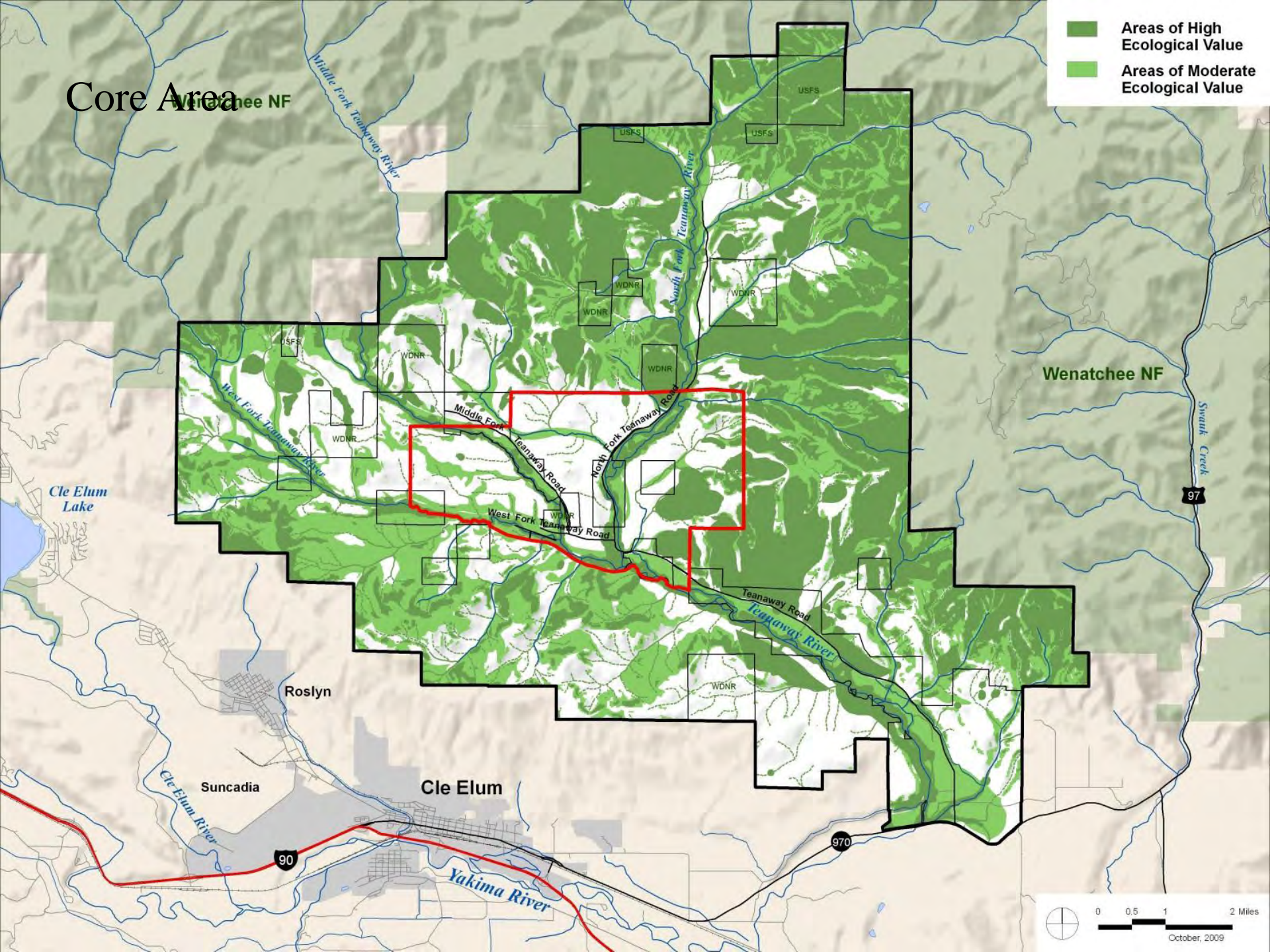
**ZONING FOR AFLC OWNED LAND**

	AFLC Lands Zoned Commercial Forest	<b>39,744 Ac.</b>
+ 	AFLC Lands Zoned Forest & Range	<b>6,182 Ac.</b>
+ 	AFLC Lands Zoned Rural 3	<b>925 Ac.</b>
=	<b>Total AFLC Lands</b>	<b>46,851 Ac.</b>



# Core Area

- Areas of High Ecological Value
- Areas of Moderate Ecological Value



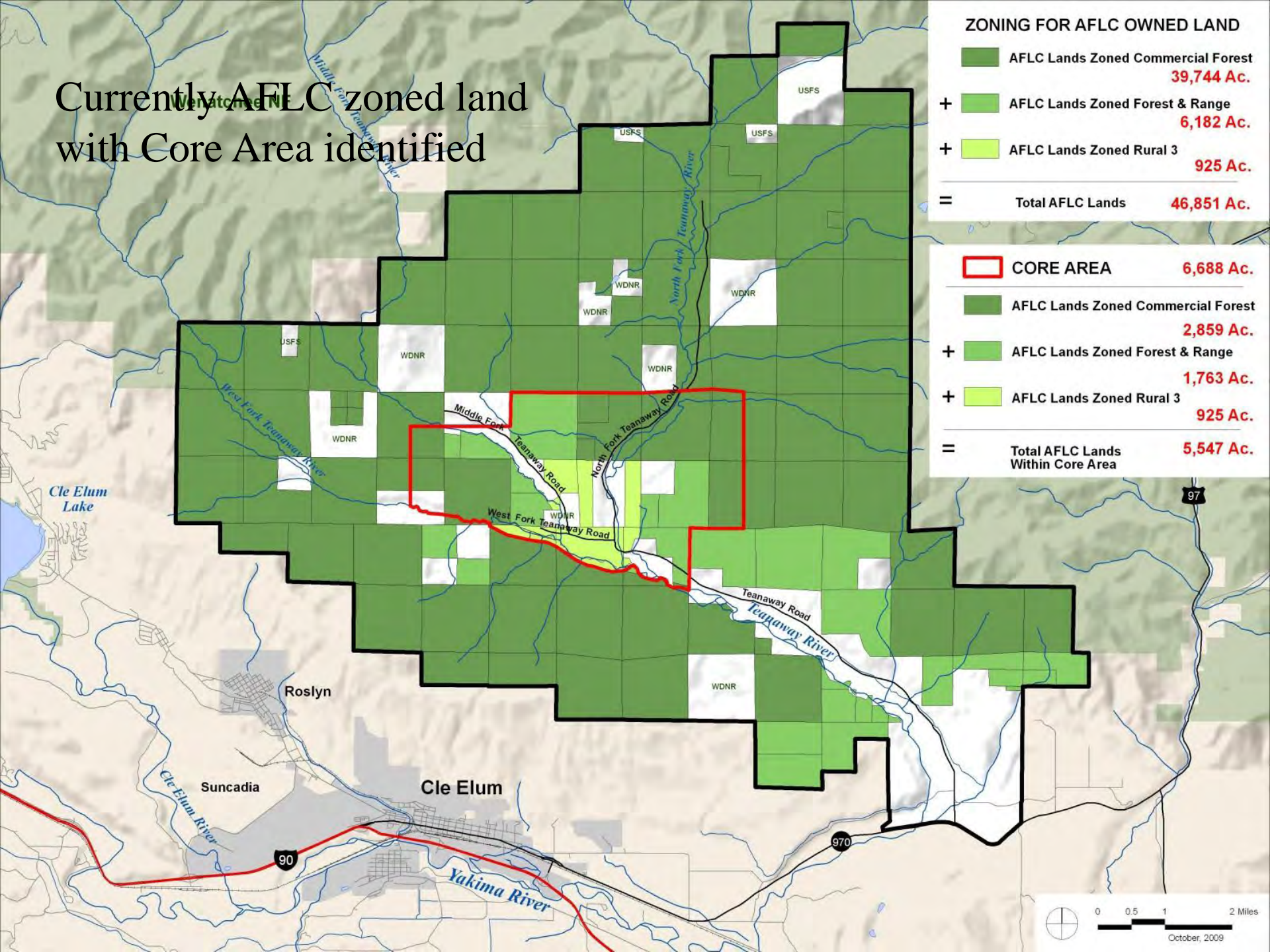
0 0.5 1 2 Miles  
October, 2009

# Currently AFLC zoned land with Core Area identified

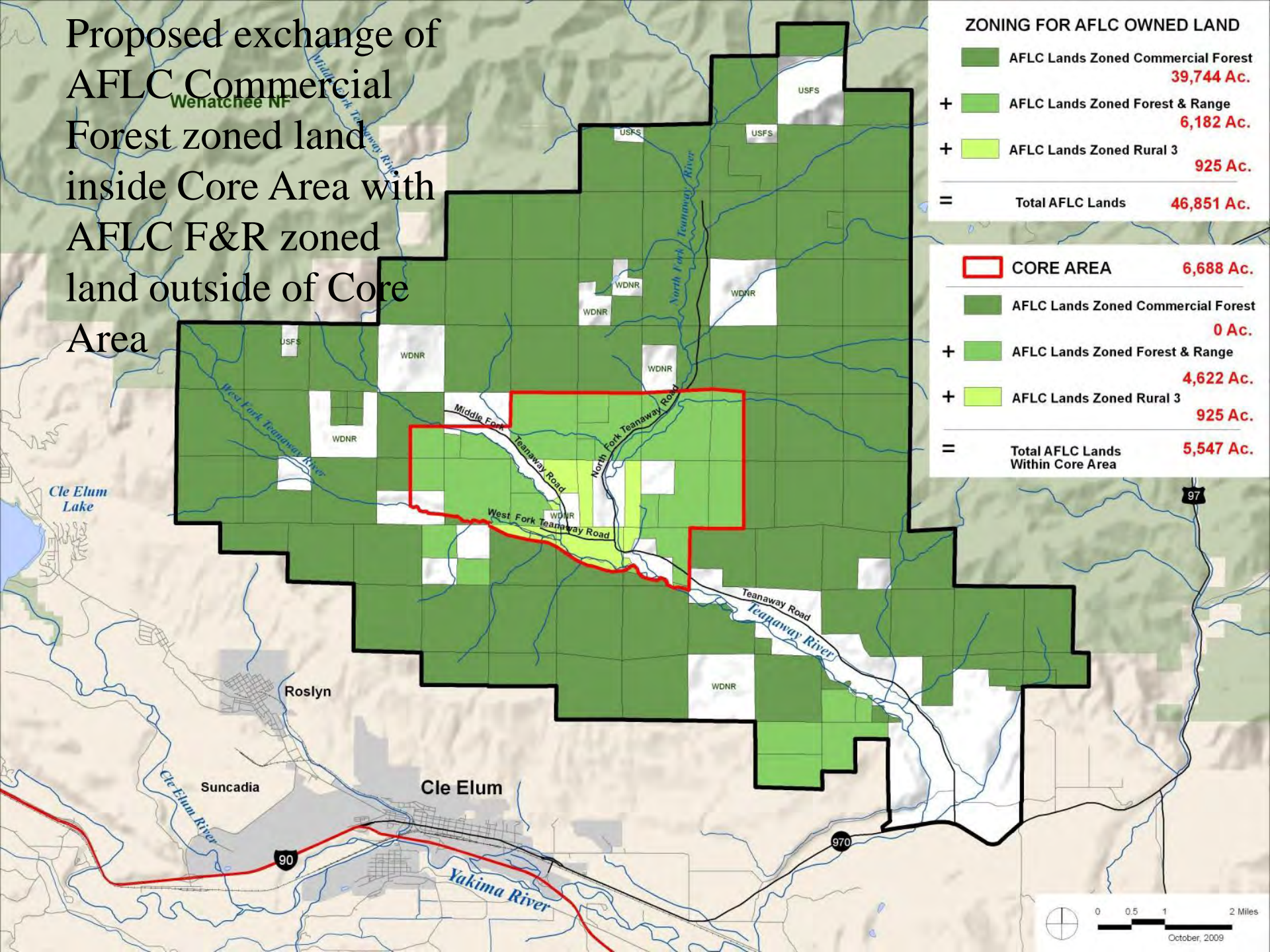
## ZONING FOR AFLC OWNED LAND

	AFLC Lands Zoned Commercial Forest	39,744 Ac.
+ 	AFLC Lands Zoned Forest & Range	6,182 Ac.
+ 	AFLC Lands Zoned Rural 3	925 Ac.
=	<b>Total AFLC Lands</b>	<b>46,851 Ac.</b>

	<b>CORE AREA</b>	<b>6,688 Ac.</b>
	AFLC Lands Zoned Commercial Forest	2,859 Ac.
+ 	AFLC Lands Zoned Forest & Range	1,763 Ac.
+ 	AFLC Lands Zoned Rural 3	925 Ac.
=	<b>Total AFLC Lands Within Core Area</b>	<b>5,547 Ac.</b>



Proposed exchange of  
 AFLC Commercial  
 Forest zoned land  
 inside Core Area with  
 AFLC F&R zoned  
 land outside of Core  
 Area



**ZONING FOR AFLC OWNED LAND**

	AFLC Lands Zoned Commercial Forest	<b>39,744 Ac.</b>
+	AFLC Lands Zoned Forest & Range	<b>6,182 Ac.</b>
+	AFLC Lands Zoned Rural 3	<b>925 Ac.</b>
=	<b>Total AFLC Lands</b>	<b>46,851 Ac.</b>

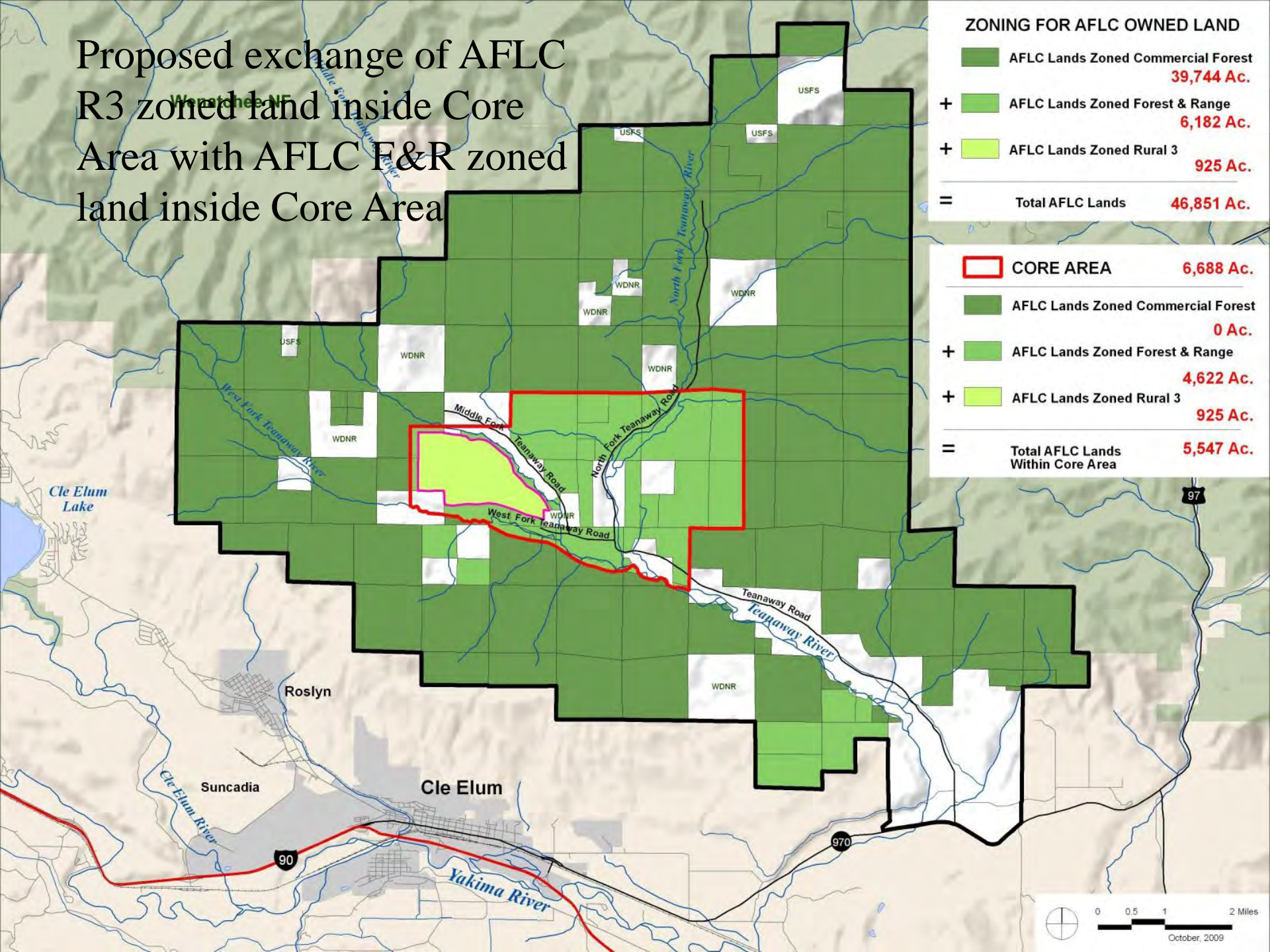
	<b>CORE AREA</b>	<b>6,688 Ac.</b>
	AFLC Lands Zoned Commercial Forest	<b>0 Ac.</b>
+	AFLC Lands Zoned Forest & Range	<b>4,622 Ac.</b>
+	AFLC Lands Zoned Rural 3	<b>925 Ac.</b>
=	<b>Total AFLC Lands Within Core Area</b>	<b>5,547 Ac.</b>

# Proposed exchange of AFLC R3 zoned land inside Core Area with AFLC F&R zoned land inside Core Area

## ZONING FOR AFLC OWNED LAND

	AFLC Lands Zoned Commercial Forest	39,744 Ac.
+ 	AFLC Lands Zoned Forest & Range	6,182 Ac.
+ 	AFLC Lands Zoned Rural 3	925 Ac.
=	<b>Total AFLC Lands</b>	<b>46,851 Ac.</b>

	<b>CORE AREA</b>	<b>6,688 Ac.</b>
	AFLC Lands Zoned Commercial Forest	0 Ac.
+ 	AFLC Lands Zoned Forest & Range	4,622 Ac.
+ 	AFLC Lands Zoned Rural 3	925 Ac.
=	<b>Total AFLC Lands Within Core Area</b>	<b>5,547 Ac.</b>

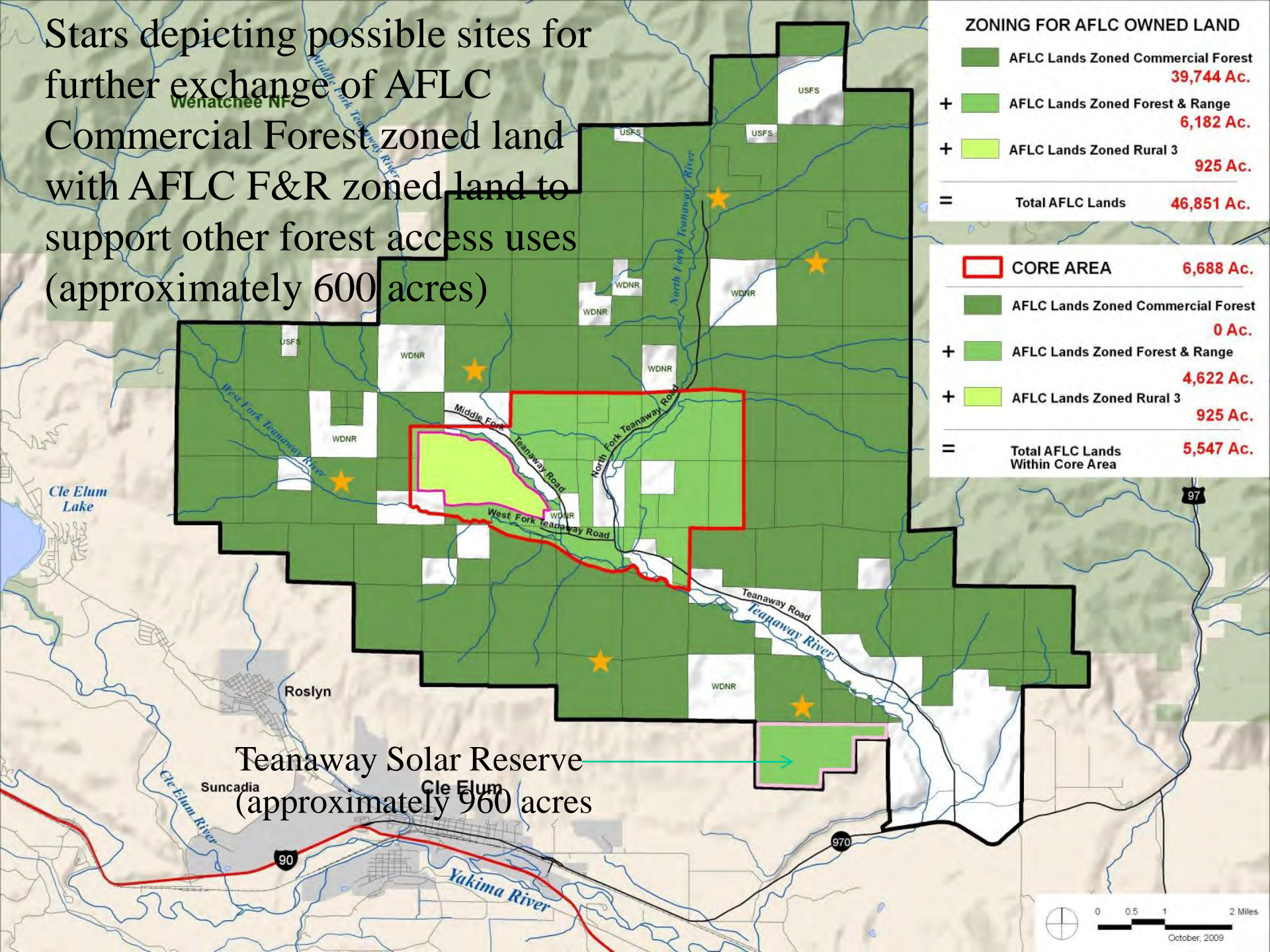


Stars depicting possible sites for further exchange of AFLC Commercial Forest zoned land with AFLC F&R zoned land to support other forest access uses (approximately 600 acres)

**ZONING FOR AFLC OWNED LAND**

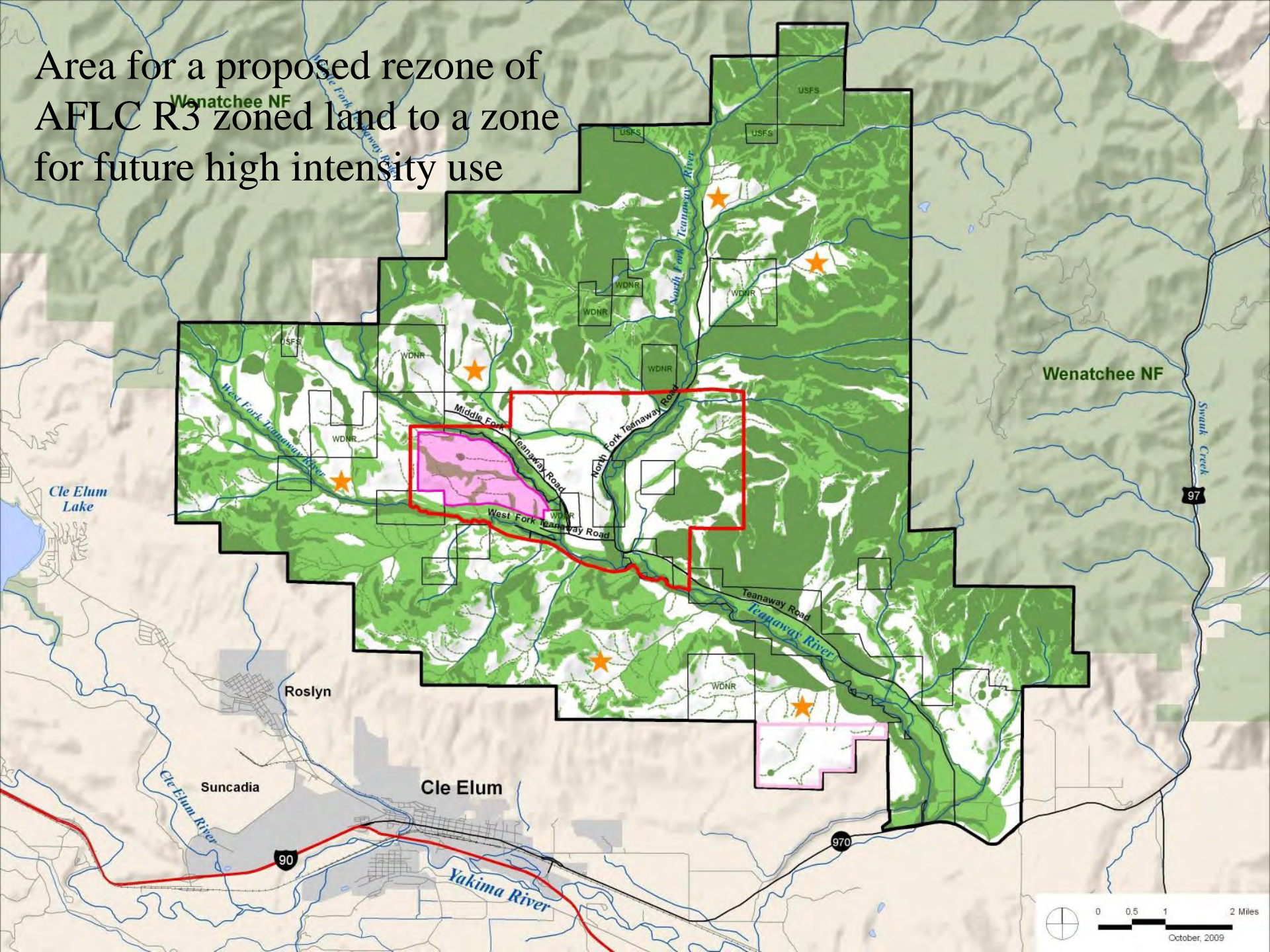
	AFLC Lands Zoned Commercial Forest	<b>39,744 Ac.</b>
+ 	AFLC Lands Zoned Forest & Range	<b>6,182 Ac.</b>
+ 	AFLC Lands Zoned Rural 3	<b>925 Ac.</b>
=	<b>Total AFLC Lands</b>	<b>46,851 Ac.</b>

	<b>CORE AREA</b>	<b>6,688 Ac.</b>
	AFLC Lands Zoned Commercial Forest	<b>0 Ac.</b>
+ 	AFLC Lands Zoned Forest & Range	<b>4,622 Ac.</b>
+ 	AFLC Lands Zoned Rural 3	<b>925 Ac.</b>
=	<b>Total AFLC Lands Within Core Area</b>	<b>5,547 Ac.</b>



Teanaway Solar Reserve (approximately 960 acres)

Area for a proposed rezone of  
AFLC R3 zoned land to a zone  
for future high intensity use





Area of approximately 250 acres for the proposed village

