

Upper Teanaway Subarea Planning Process

OPEN HOUSE PUBLIC MEETING

October 21, 2009

6pm - 9pm

Swauk-Teanaway Grange

Welcome!

This open house public meeting is an opportunity for you to hear a summary of issues and interests from the August 20 Open House and three subsequent Public Meetings. Time is also provided for conversations with County staff and consultants assisting with the subarea planning process and for additional oral comments.

Thank you for your participation in the Open House.

Topic Stations:

Station 1 - Summary of Planning Principles

Station 2 - Summary of Issues and Interests

Station 3 - Summary of Initial Data Collection

Station 4 - Confirmation of Subarea Boundary

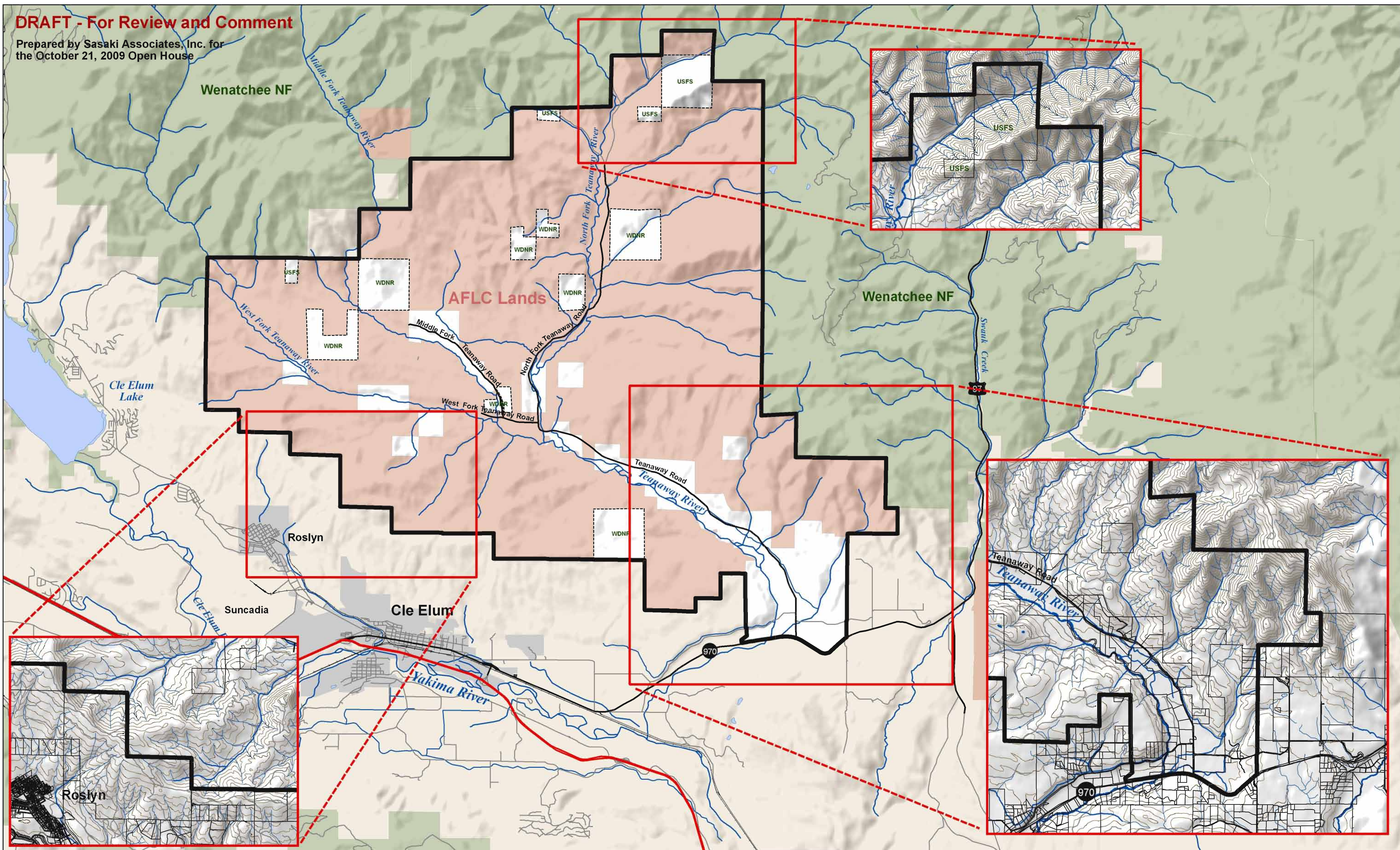
Agenda:

- | | |
|-------------|--|
| 6:00 - 7:00 | Sign in; Talk with County staff and project consultants at Topic Stations |
| 7:00 - 8:00 | Introductions; Overview of prior meetings; Overview of today's meeting format; Presentations by County staff and consultants |
| 8:00 - 9:00 | Q&A with staff and consultants at Topic Stations; Public comments at recorder |
| 9:00 - 9:15 | Signup for comments at October 28 public meeting |



DRAFT - For Review and Comment

Prepared by Sasaki Associates, Inc. for
the October 21, 2009 Open House



Subarea Boundary

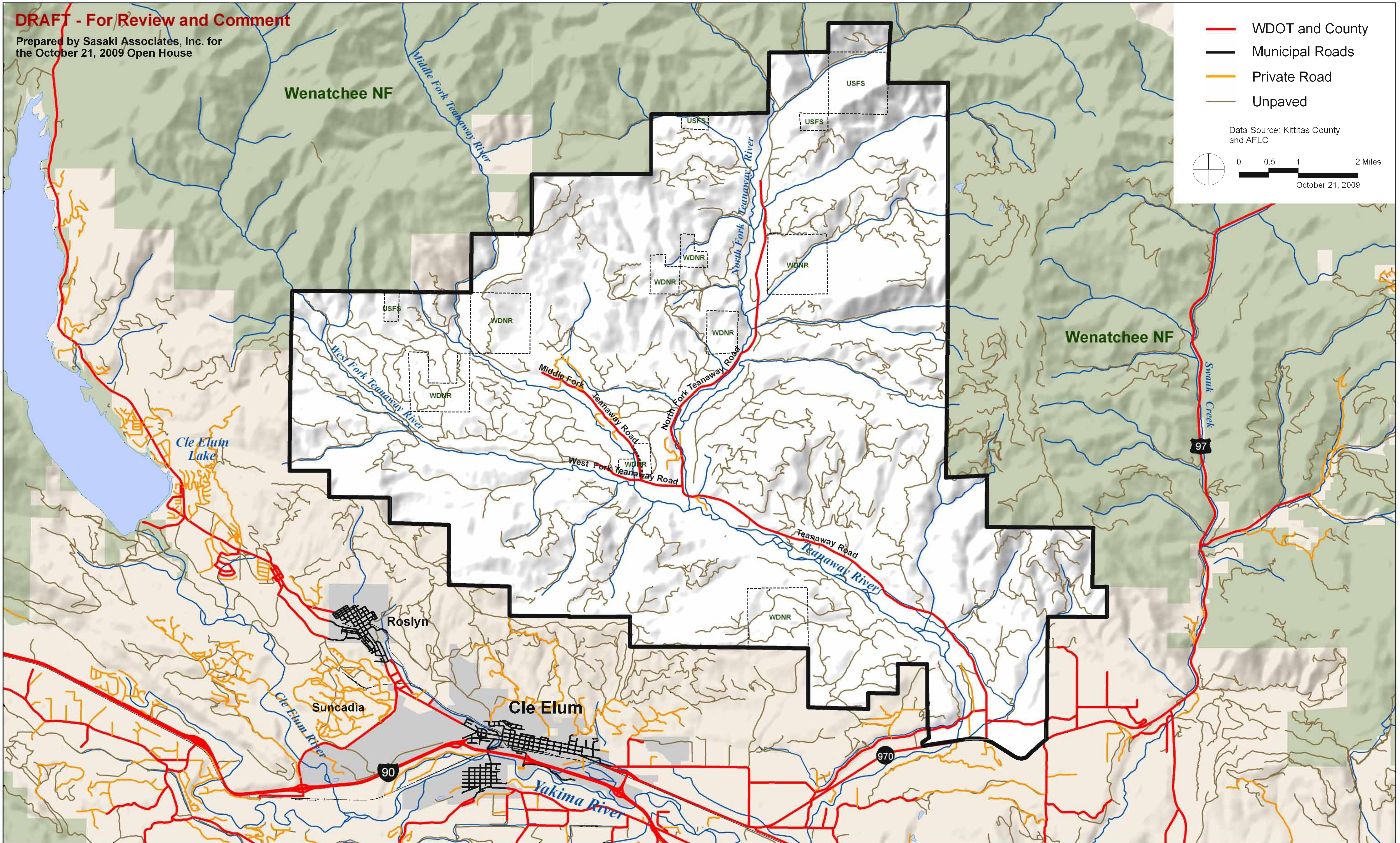
Upper Teanaway
Subarea



SASAKI

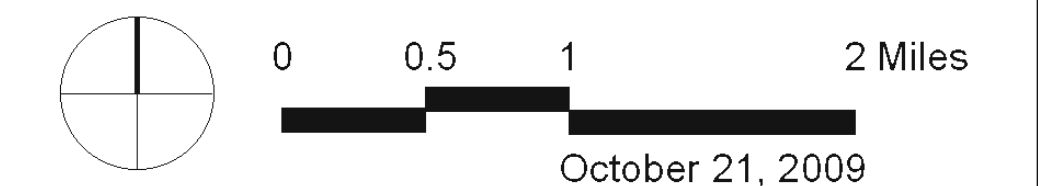
DRAFT - For Review and Comment

Prepared by Sasaki Associates, Inc. for
the October 21, 2009 Open House



- WDOT and County
- Municipal Roads
- Private Road
- Unpaved

Data Source: Kittitas County
and AFLC



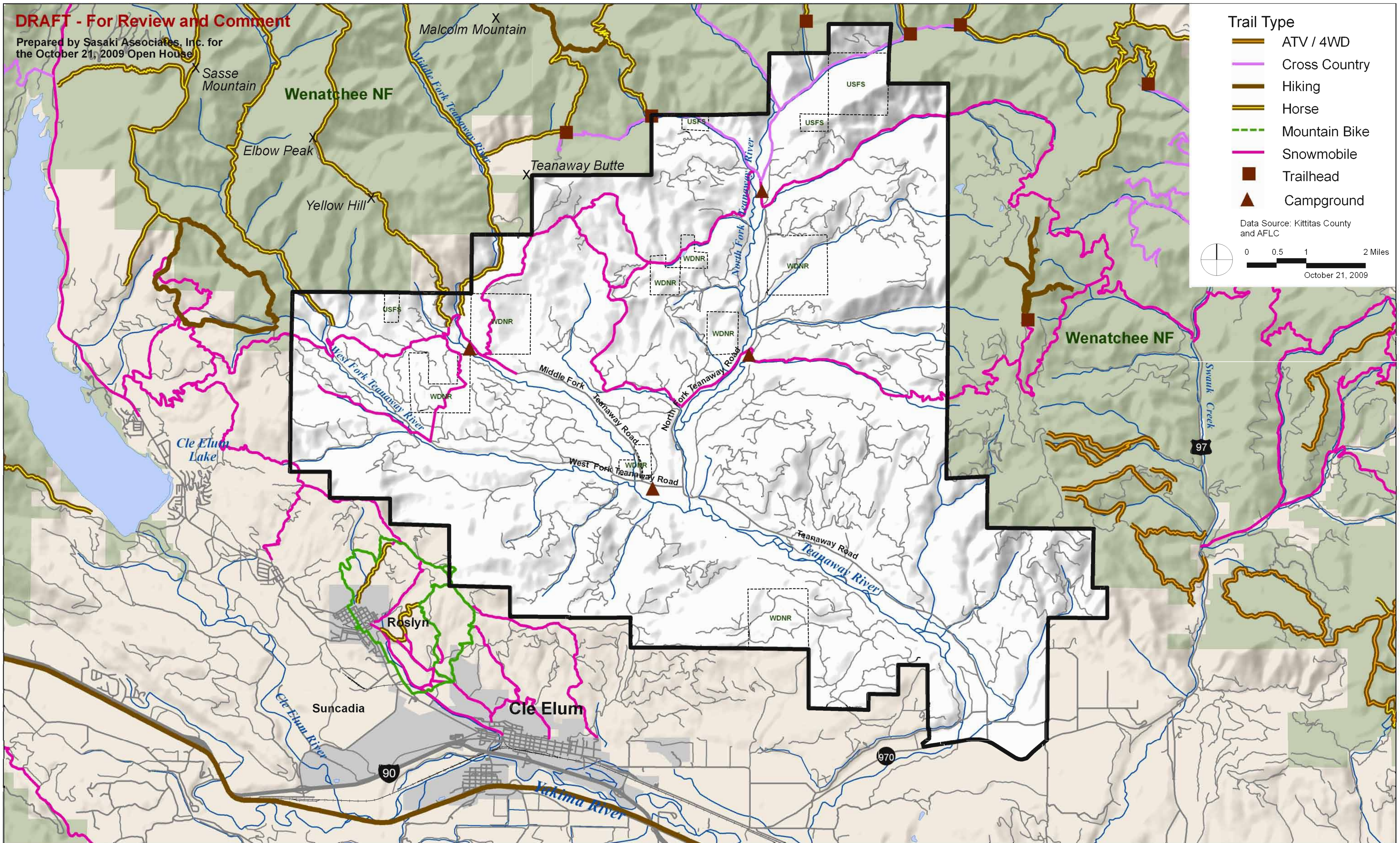
Subarea Road Types

Upper Teanaway
Subarea

S A S A K I

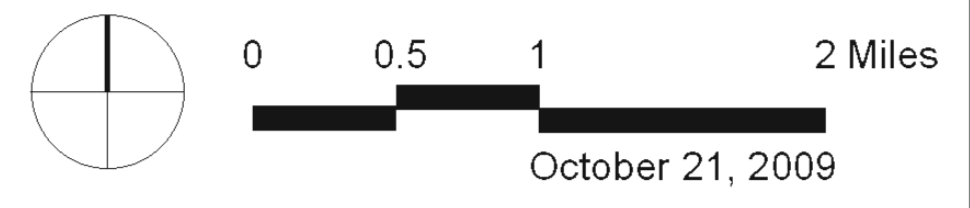
DRAFT - For Review and Comment

Prepared by Sasaki Associates, Inc. for the October 21, 2009 Open House



- Trail Type**
-  ATV / 4WD
 -  Cross Country
 -  Hiking
 -  Horse
 -  Mountain Bike
 -  Snowmobile
 -  Trailhead
 -  Campground

Data Source: Kittitas County and AFLC



October 21, 2009



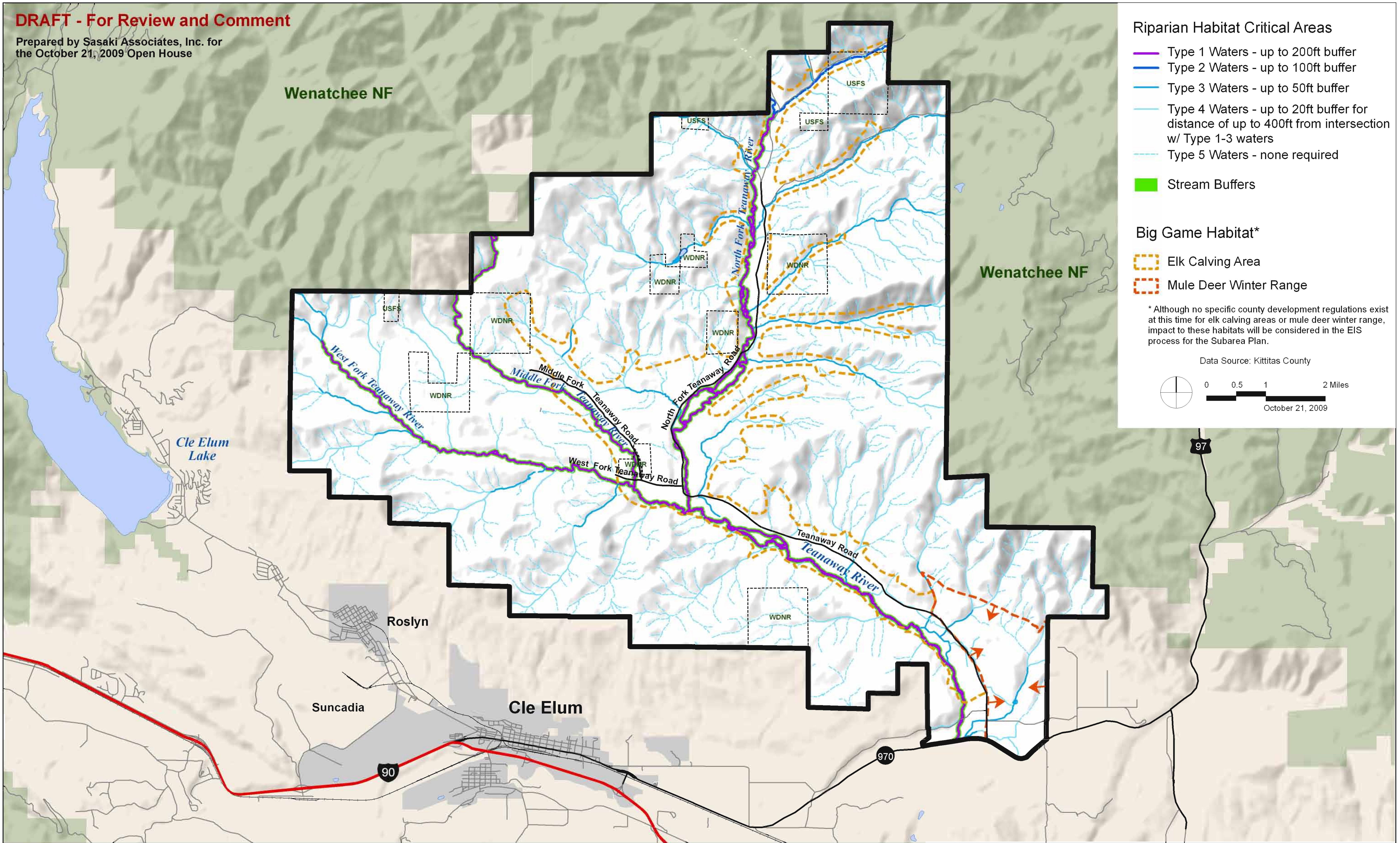
Recreational Trails

Upper Teanaway Subarea

S A S A K I

DRAFT - For Review and Comment

Prepared by Sasaki Associates, Inc. for
the October 21, 2009 Open House



Riparian Habitat Critical Areas

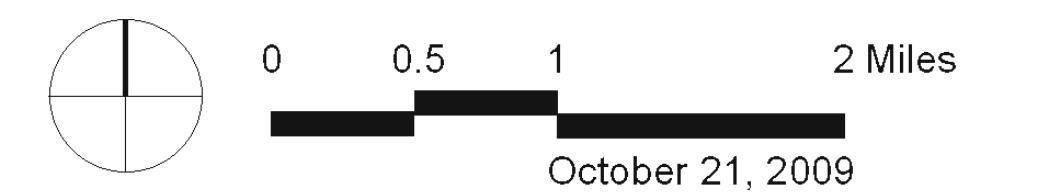
- Type 1 Waters - up to 200ft buffer
- Type 2 Waters - up to 100ft buffer
- Type 3 Waters - up to 50ft buffer
- Type 4 Waters - up to 20ft buffer for distance of up to 400ft from intersection w/ Type 1-3 waters
- Type 5 Waters - none required
- Stream Buffers

Big Game Habitat*

- Elk Calving Area
- Mule Deer Winter Range

* Although no specific county development regulations exist at this time for elk calving areas or mule deer winter range, impact to these habitats will be considered in the EIS process for the Subarea Plan.

Data Source: Kittitas County



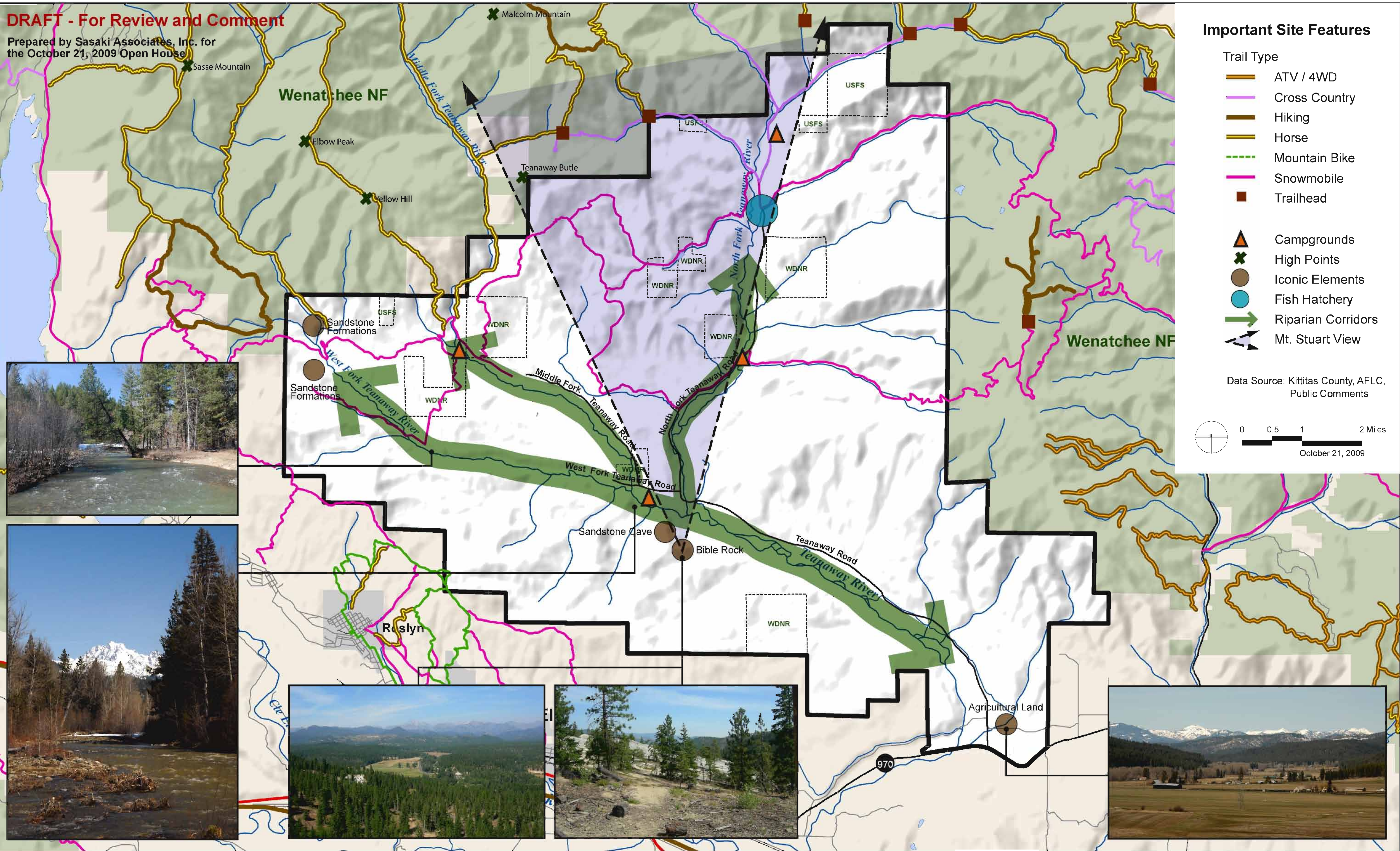
Fish and Wildlife Habitat Conservation Areas

Upper Teanaway Subarea

S A S A K I

DRAFT - For Review and Comment

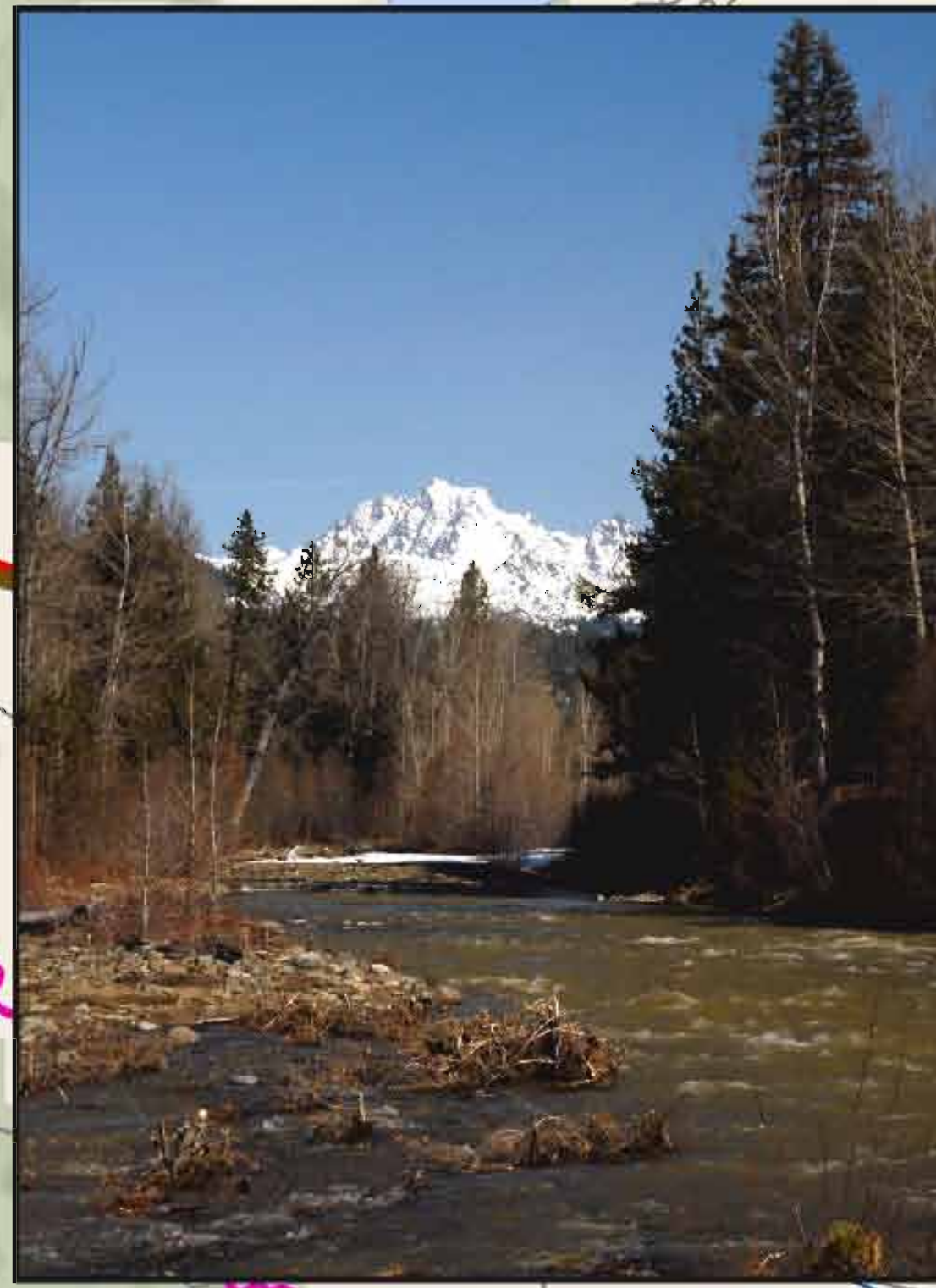
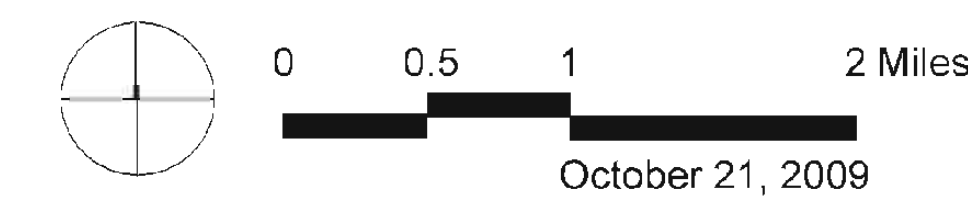
Prepared by Sasaki Associates, Inc. for the October 21, 2009 Open House



Important Site Features

- Trail Type
- ATV / 4WD
 - Cross Country
 - Hiking
 - Horse
 - Mountain Bike
 - Snowmobile
 - Trailhead
- Campgrounds
 - High Points
 - Iconic Elements
 - Fish Hatchery
 - Riparian Corridors
 - Mt. Stuart View

Data Source: Kittitas County, AFLC, Public Comments



Important Site Features

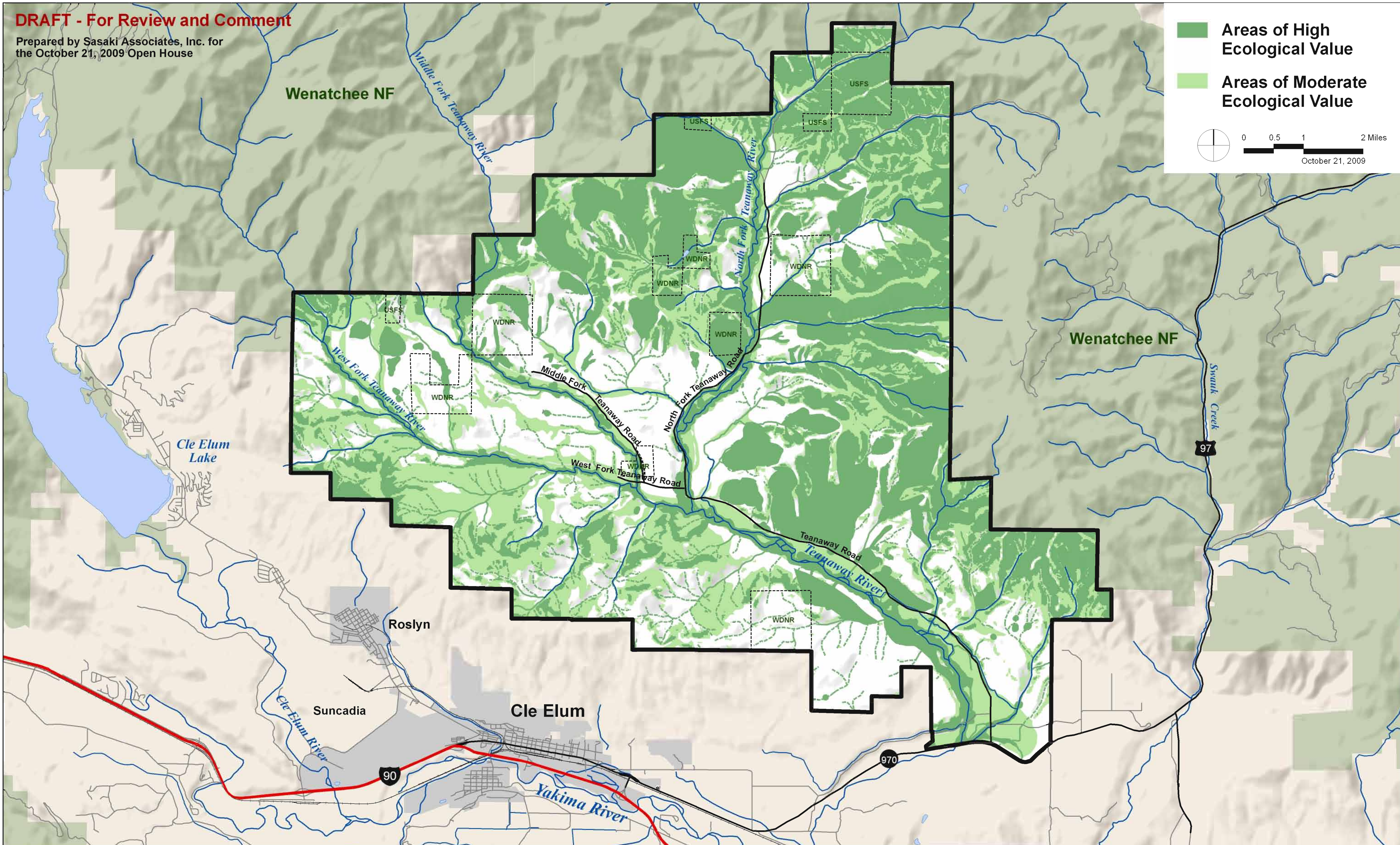
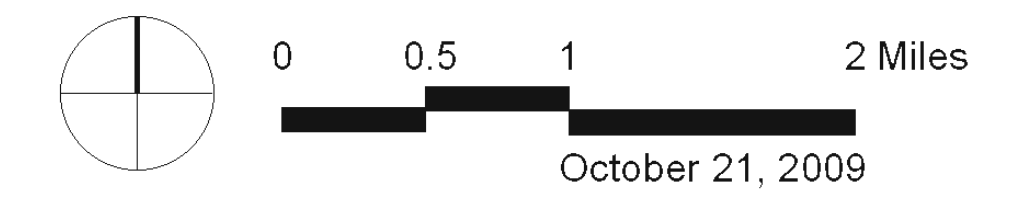
Upper Teanaway Subarea

S A S A K I

DRAFT - For Review and Comment

Prepared by Sasaki Associates, Inc. for
the October 21, 2009 Open House

-  Areas of High Ecological Value
-  Areas of Moderate Ecological Value



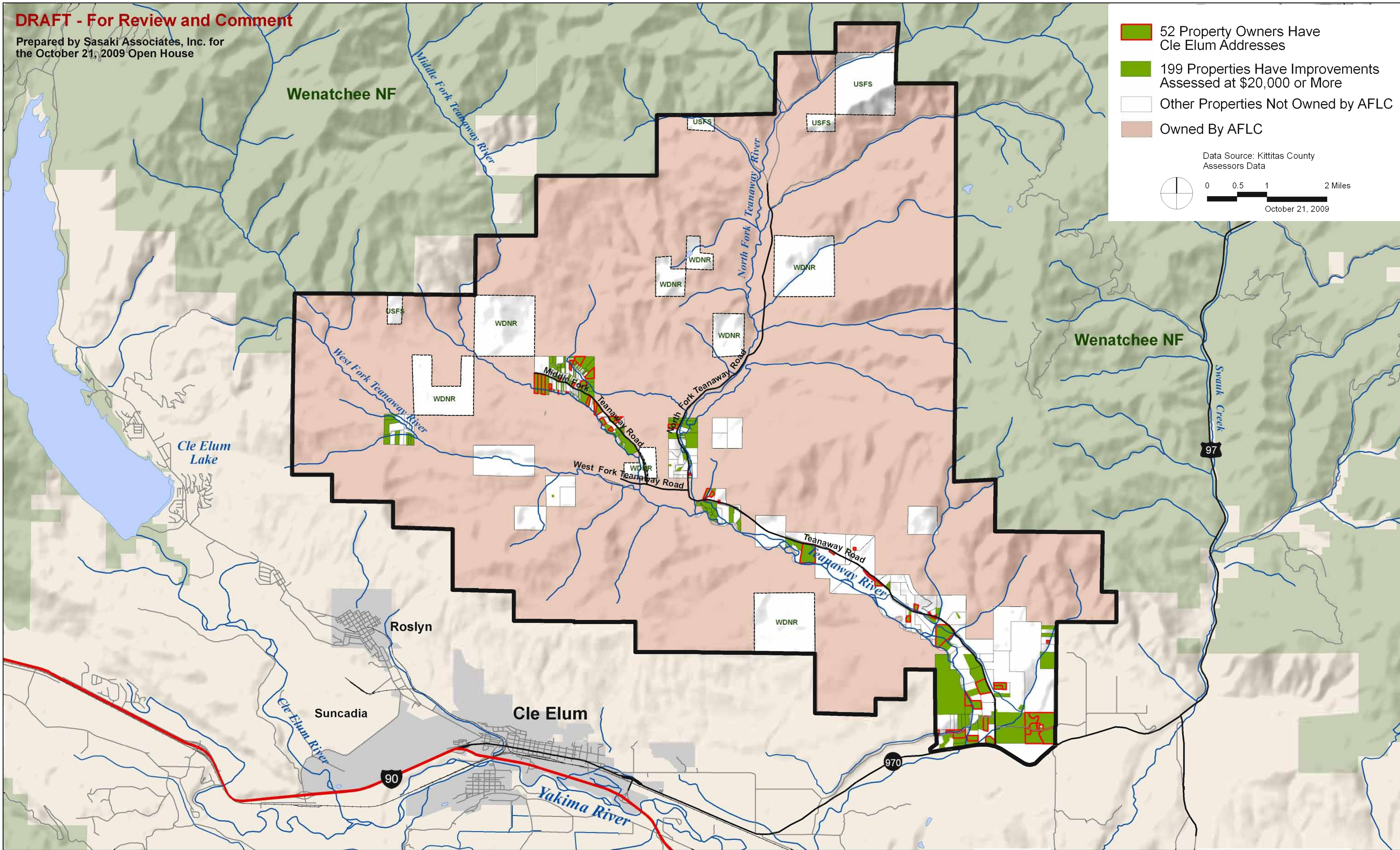
Areas of High and Moderate Ecological Value

Upper Teanaway Subarea



DRAFT - For Review and Comment

Prepared by Sasaki Associates, Inc. for
the October 21, 2009 Open House



- 52 Property Owners Have Cle Elum Addresses
- 199 Properties Have Improvements Assessed at \$20,000 or More
- Other Properties Not Owned by AFLC
- Owned By AFLC

Data Source: Kittitas County Assessors Data
0 0.5 1 2 Miles
October 21, 2009



**Initial Data Collection from
Tax Assessor Records**

Upper Teanaway
Subarea

