

Upper Teanaway

Subarea Planning Process

PUBLIC MEETING

September 3, 2009
6pm - 9pm
Swauk-Teanaway Grange

Welcome!

Meeting Objectives:

- Build on Planning Principles from August 20 Open House
- Identify Frequently Asked Questions
- Provide Oral and Written Comments on Planning Process and Future of the Subarea

Meeting Agenda:

- 6:00 - 6:15** Sign in; talk with County staff and project consultants
- 6:15 - 6:30** Introductions; Overview of prior meeting; Overview of today's meeting format; Future meetings
- 6:30 - 9:00** Comments first from those who signed up before today; then from those who signed up at today's meeting
- 9:00 - 9:15** Signup for comments at September 17 and October 1 public meeting



Upper Teanaway

Subarea Planning Process

Results from the Planning Principles Activity

At the August 20, 2009 Teanaway Subarea Plan Public Meeting and Open House participants were invited to list important guiding principles for the future of the Upper Teanaway Valley. Comments were added in three categories: Environmental Stewardship; Community Benefits; and Economic Vitality. The lists below summarize the comments gathered for each category. A number following a comment indicates the frequency this comment (or a substantively similar comment) was listed, or where someone agreed with the comment by placing a star next to it. Comments without a number were listed once.

ENVIRONMENTAL STEWARDSHIP

- Preserve open space and forest for the long-term (WDNR or Nature Conservancy to purchase land?) this land from current owner (8)
- Preserve wildlife habitat and corridors (8)
- Environmental restoration (especially steelhead, trout, and salmon) and preservation including wide riparian buffers/setbacks (8)
- Maintain stream flows and protect water rights, also for downstream irrigators and ranches (5)
- Fire safety - remote buildings not accessible for Fire Dept and forest should be maintained to be "fire safe." (3)
- Preserve access for hunting, fishing, hiking, and horseback riding (3)
- Protect sandstone formations (2)
- Elk calving - add to critical areas map around Whiel Rd. (2)
- De-certify spotted owl circles; let AFLC manage their forest (2)
- Protect water quality (2)
- Log out spruce bud worm damage before complete timber loss or fire comes through (2)
- Protect steep (and non-steep!) slopes through erosion control (2)
- Preserve views (2)
- Maintain healthy forests (2)
- Minimize infrastructure impact
- Recreation near major cities
- Landscape scale natural resource management across landownership boundaries; more effective with partnerships of large landowners

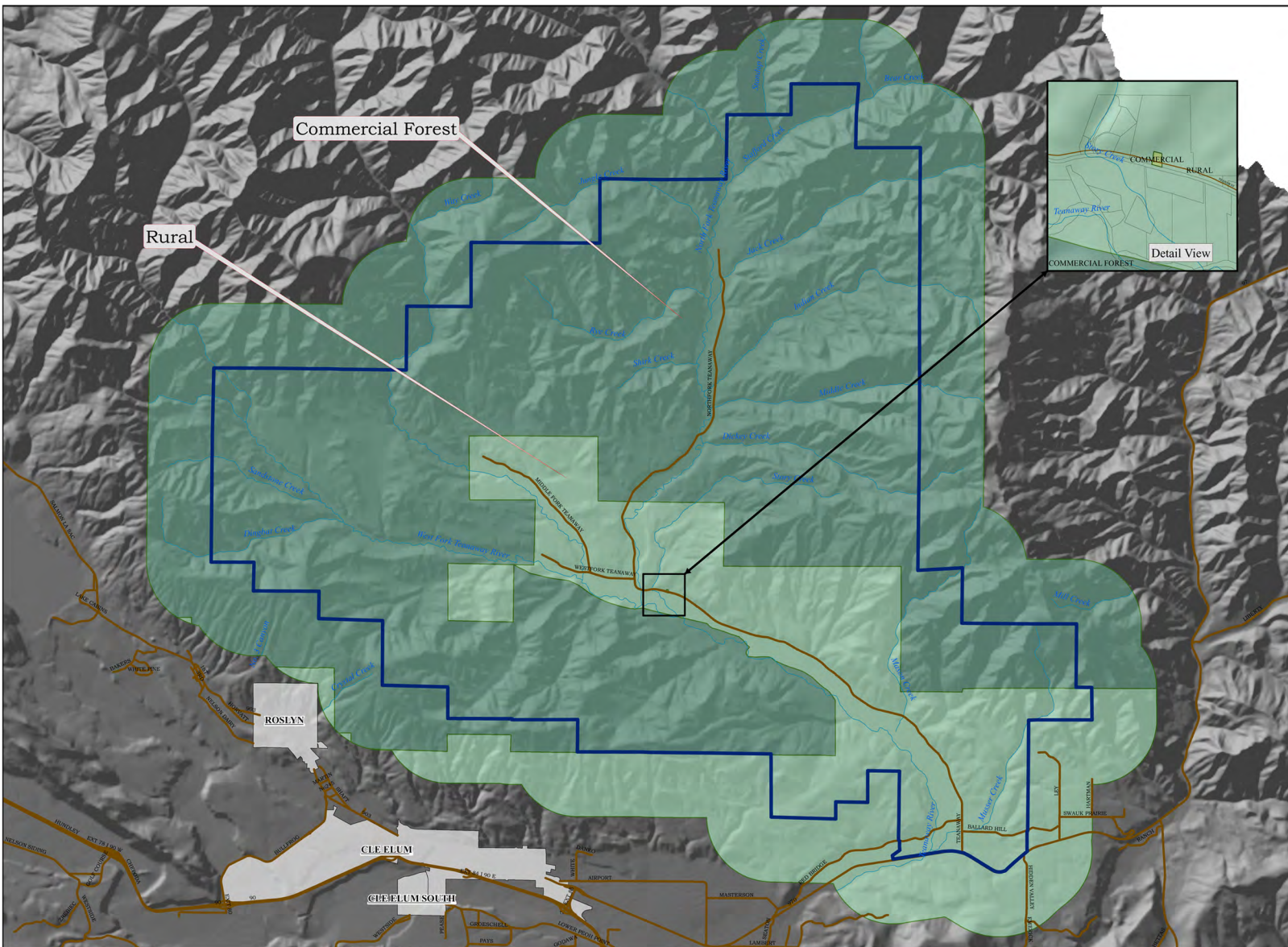


COMMUNITY BENEFITS

- Impacts to roads? Teanaway Road shouldn't be widened or straightened (5)
- Public access
 - Equestrian trails, horse camping, and trailhead parking (5)
 - Hunting (5)
 - Fishing, camping, and hiking (4)
 - Snowmobiles (4)
 - Winter sports (2)
 - Maintain access to USFS lands up gradient
- Water (prevent development without water source); limit well drilling - what will be the effect on water table? Current water rights could be affected (3)
- Maintain farming (3)
- Maintain/enhance open spaces
- Maintain/enhance recreation amenities
- Affordable housing/housing diversity - (Response: no! no more housing needed here!)
- Teanaway Road, North, middle & west Forks should all be dead end roads as they are now
- Need to provide better snowplowing
- If Nature Conservancy gets to pay taxes, there will be more revenues for public services and schools
- Protect rural character and culture of the Teanaway Valley

ECONOMIC VITALITY

- Limit population growth; worried about too much growth; concerned about poorly planning growth (2)
- Protect watershed that supplies water to irrigation and stock water needs downstream (2)
- Maintain/enhance fisheries and fishing recreation (2)
- Maintain respect for private property rights
- Create career-oriented jobs
- Create forest wildlife oriented careers
- Maintain/enhance farming
- Maintain/enhance recreation economy
- Water
- Abandon Northern Spotted Owl Circles; let AFLC manage their forest land
- Continue harvesting timber
- Recognize values generated through new forest product, i.e., biomass which will produce jobs and energy; forget old school forest harvesting
- Maintain viability of ranching and farming
- Maintain recreation access and use
- Cross country ski trails



Commercial Forest

Rural



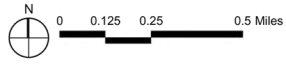
Detail View

ROSLYN

CLE ELUM

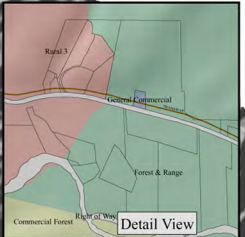
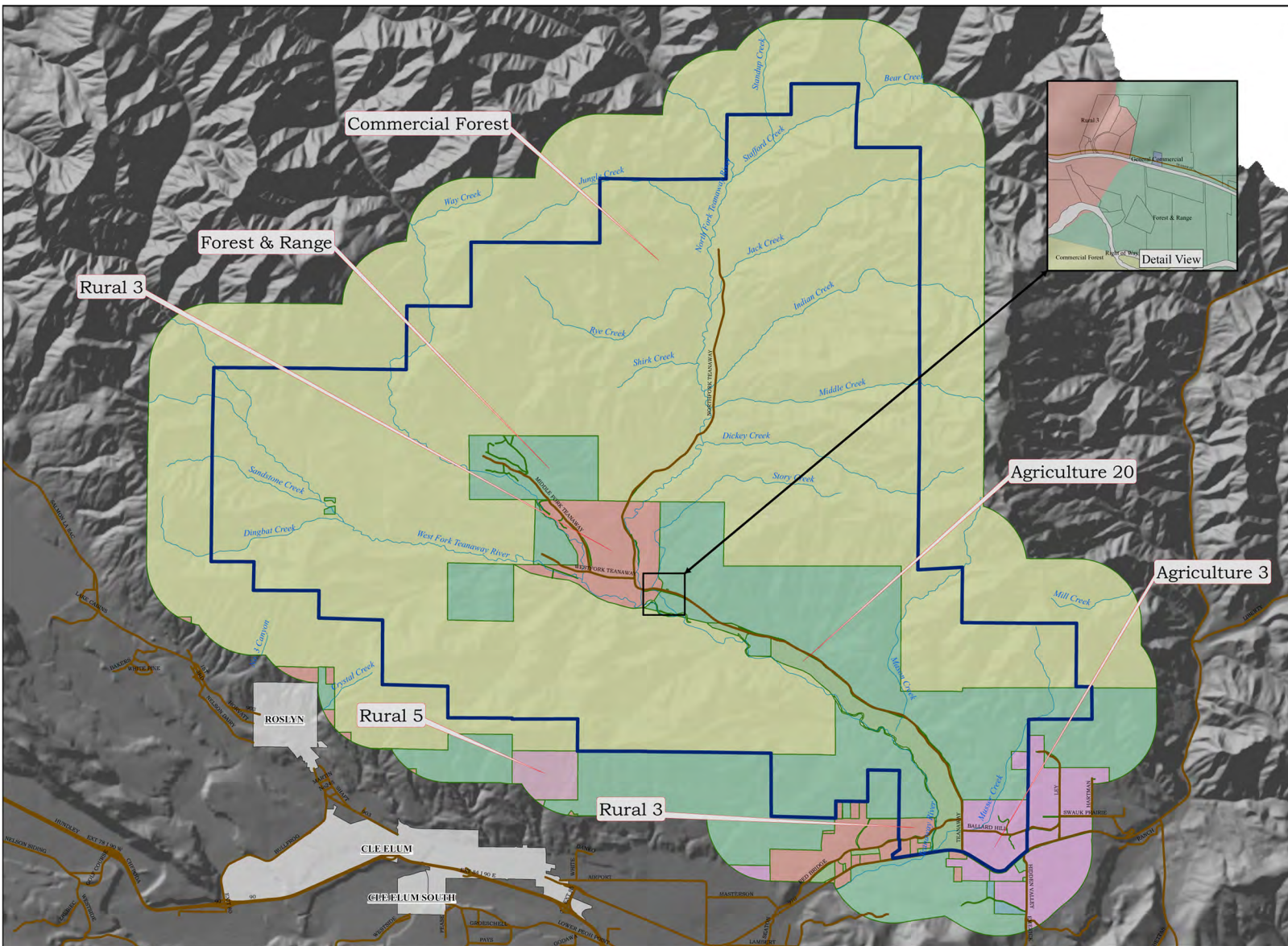
CLE ELUM SOUTH

Land Use



September 3, 2009

Maps Prepared By: Kittitas County



Zoning

