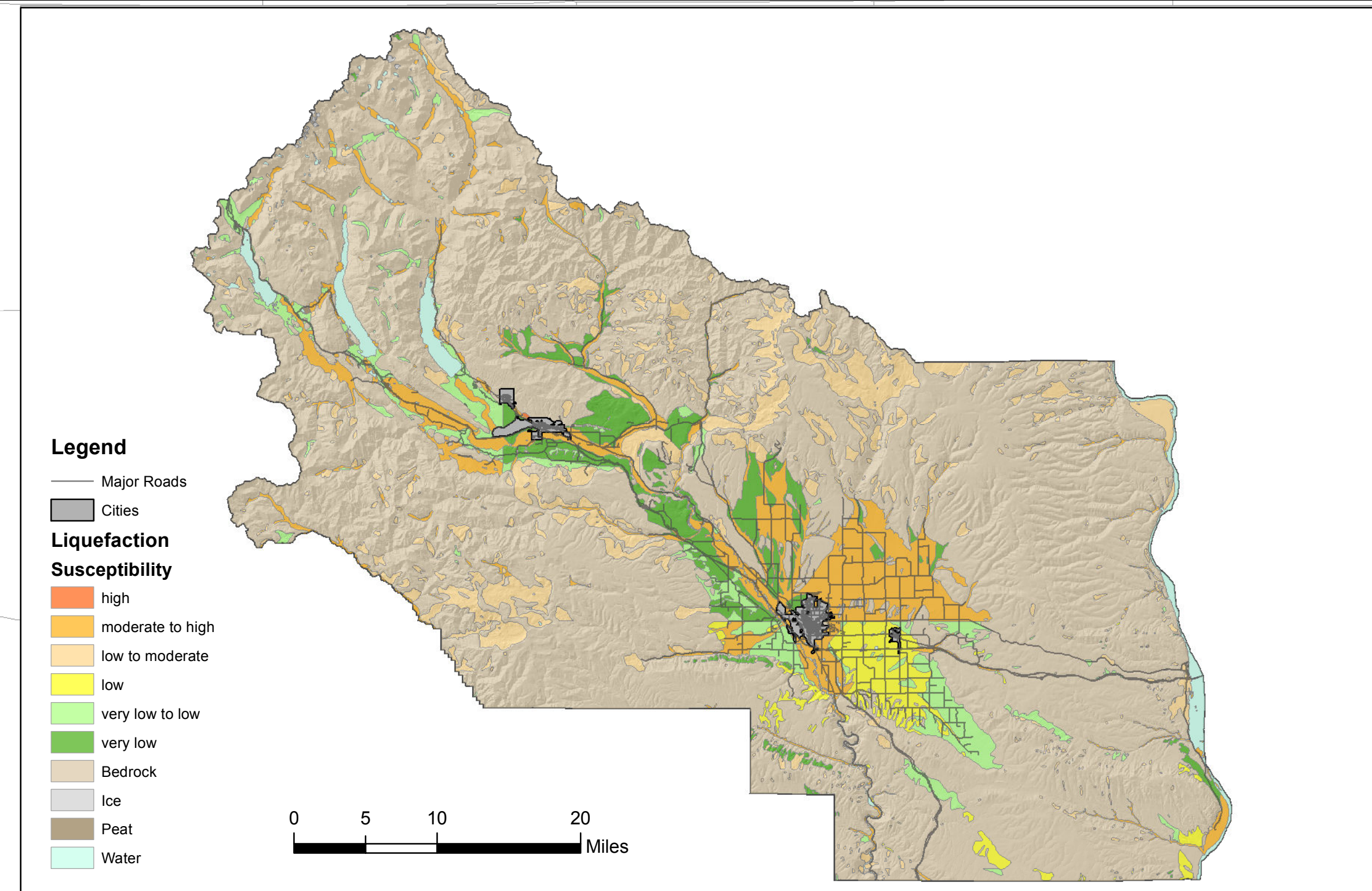
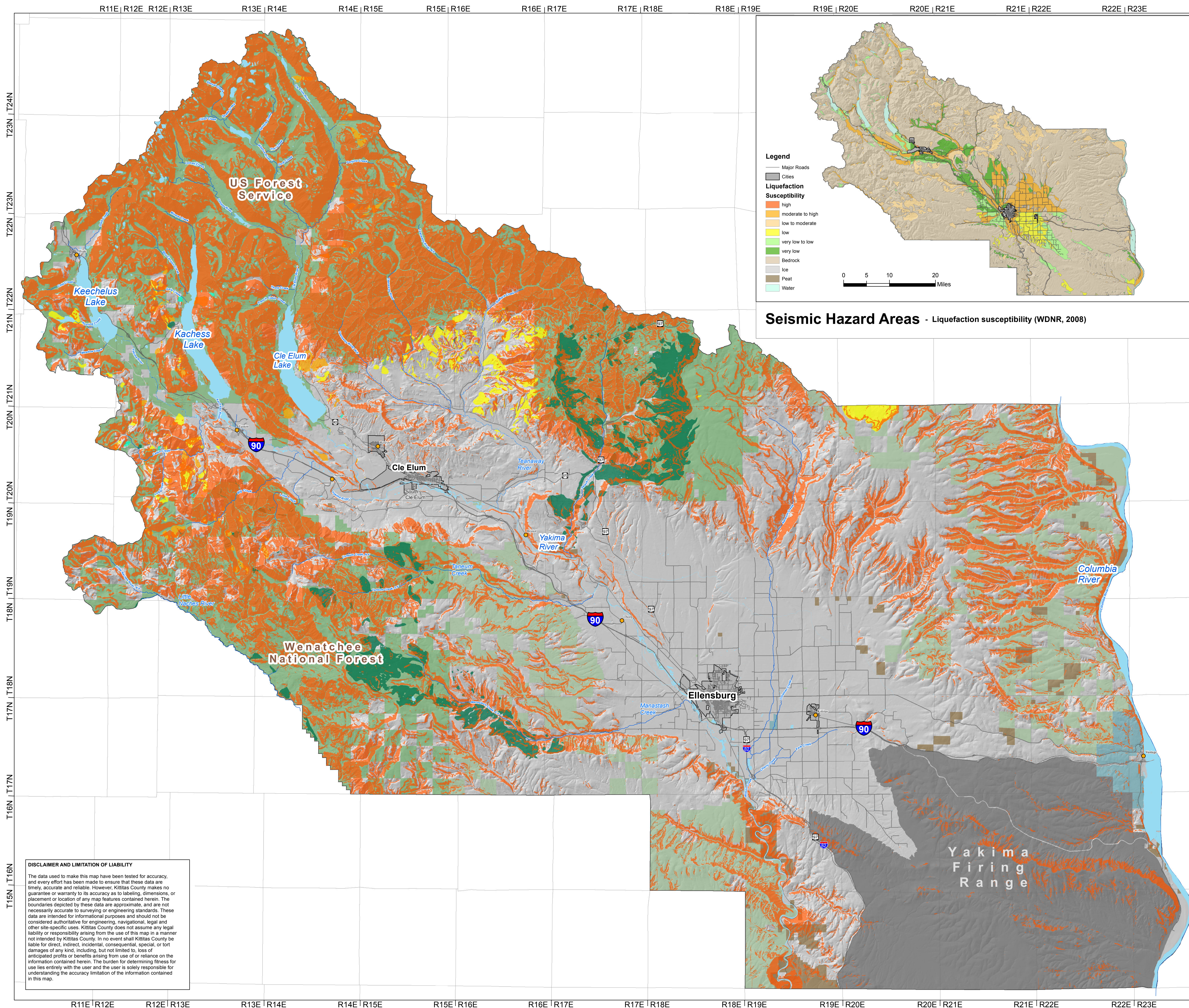
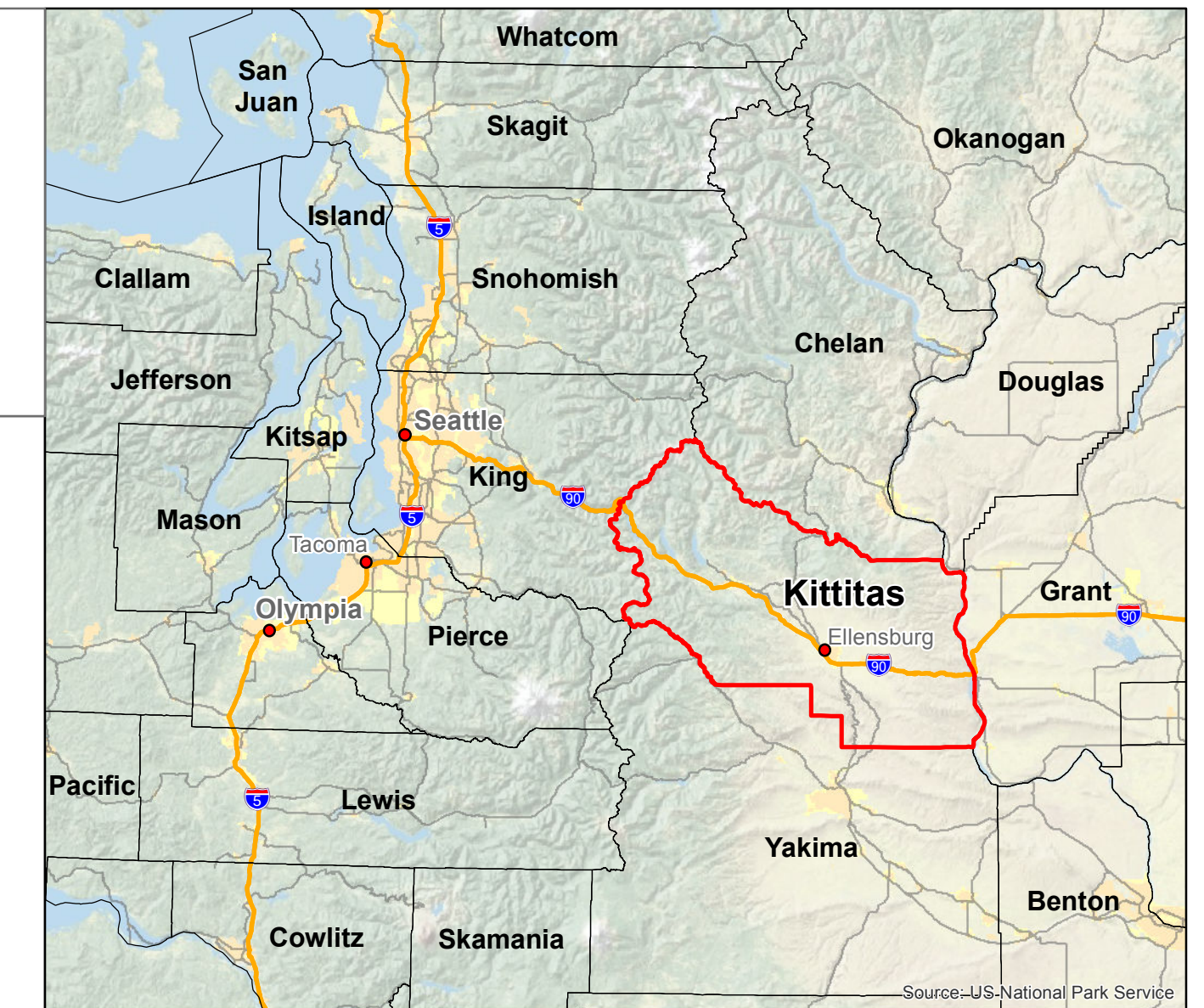


KITTITAS COUNTY CRITICAL AREAS ORDINANCE - GEOLOGICALLY HAZARDOUS AREAS



Seismic Hazard Areas - Liquefaction susceptibility (WDNR, 2008)

- Legend**
- Streams
 - Waterbodies
 - Major Roads
 - Cities
 - Steep Slopes (Slopes > 35%)
 - Landslide Hazards - Landslide Certainty**
 - Certain
 - Probable
 - Questionable
 - Unknown
 - Channel Migration Zones: Channel migration zone data is depicted in a separate map folio.**
 - Mine Hazard Areas: Historic mine data is available from the Washington Department of Natural Resources**
 - Public Lands**
 - US Bureau of Land Management
 - US Dept. of Defense
 - US Forest Service
 - WDFW
 - State Parks
 - County Boundary

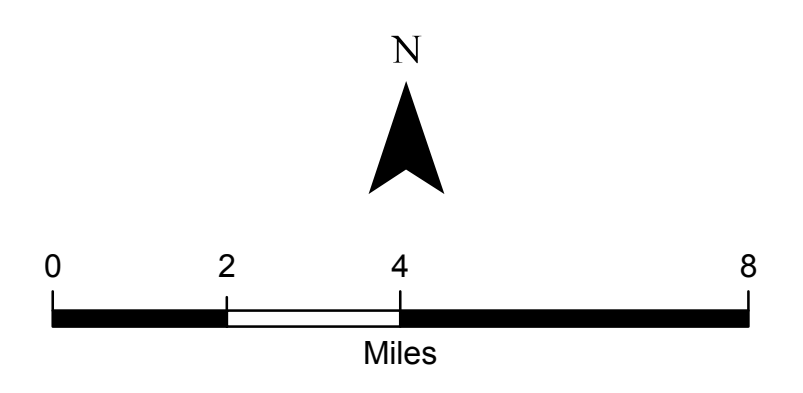
GEOLOGICALLY HAZARDOUS AREAS DATA SOURCES:
 Geologic hazardous areas are areas susceptible to erosion, landslides, earthquakes, volcanic activity and/or other geologic processes. Incompatible development in these areas can adversely affect natural resources and threaten public health and safety, putting the development and surrounding developments and uses at risk. Additional geologic hazard areas may be present that are not shown on this map.

This map was produced using data from Kittitas County for steep slopes. We used Washington Department of Land and Natural Resources (WDNR) for Landslide hazard areas data. Seismic hazard data was derived from WDNR liquefaction susceptibility data. We also reviewed the DNR volcanic hazards data and found no blast zone or flows data in the County.

Coordinate System: State Plane NAD1983 (F)
 Washington South FIPS 4602

NOTE: Map data shown here are the property of the sources listed below. Inaccuracies may exist, and ESA implies no warranties or guarantees regarding any aspect of data depiction.

Data Sources: Kittitas County, 2012; Ecology, 2010; DNR, 2010; ESRI, 2010.



Kittitas County Critical Areas Ordinance Geologically Hazardous Areas

Kittitas County, Washington
 December 2013

DISCLAIMER AND LIMITATION OF LIABILITY
 The data used to make this map have been tested for accuracy, and every effort has been made to ensure that these data are timely, accurate and reliable. However, Kittitas County makes no guarantee or warranty to its accuracy as to labeling, dimensions, or placement or location of any map features contained herein. The boundaries depicted by these data are approximate, and are not necessarily accurate to surveying or engineering standards. These data are intended for informational purposes and should not be considered authoritative for engineering, navigational, legal and other site-specific uses. Kittitas County does not assume any legal liability or responsibility arising from the use of this map in a manner not intended by Kittitas County. In no event shall Kittitas County be liable for direct, indirect, incidental, consequential, special, or tort damages of any kind, including, but not limited to, loss of anticipated profits or benefits arising from use of or reliance on the information contained herein. The burden for determining fitness for use lies entirely with the user and the user is solely responsible for understanding the accuracy limitation of the information contained in this map.