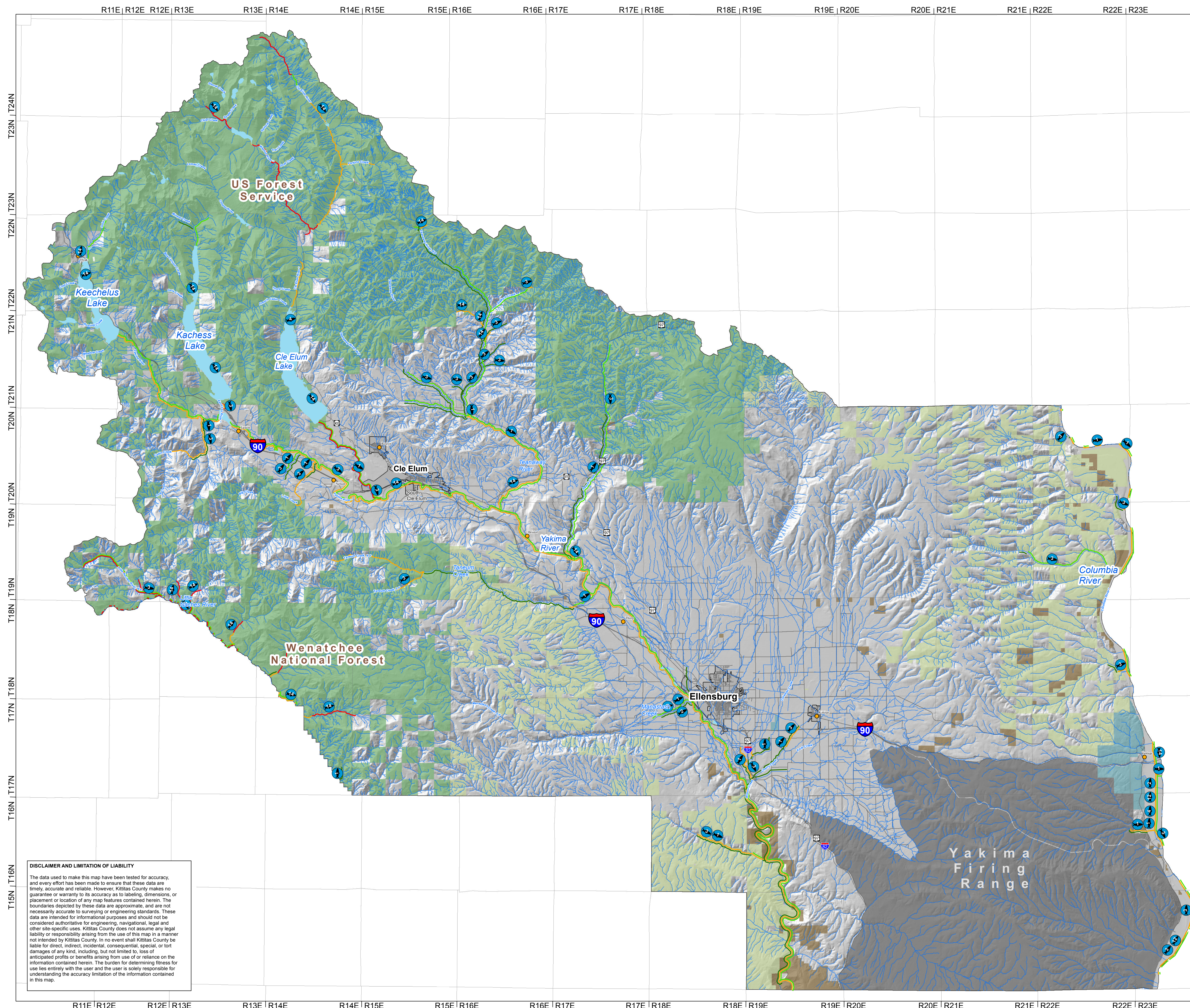
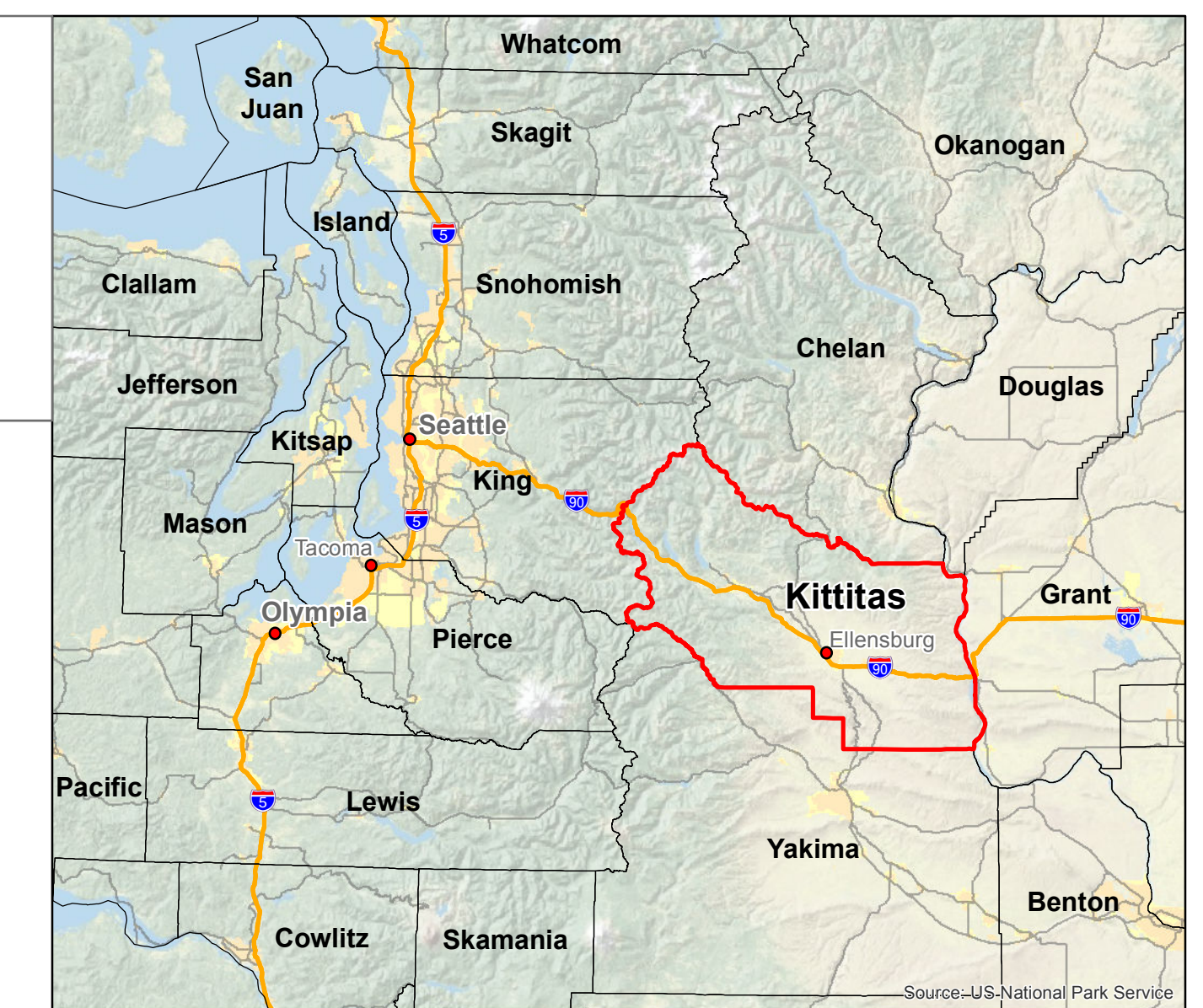


KITTITAS COUNTY CRITICAL AREAS ORDINANCE - AQUATIC HABITAT CONSERVATION AREAS



Legend

- Streams
- Ponds and Lakes
- Major Roads
- Cities
- Public Lands
 - US Bureau of Land Management
 - US Dept. of Defense
 - US Forest Service
 - WDFW
 - State Parks
 - County Boundary

Fish Distribution (Streamnet & TAC (2012))

Use Type

- Migration only
- Rearing and migration
- Spawning and rearing
- Unknown

ID, SPECIES, RUN

1. Chinook salmon, Fall	1. Chinook salmon, Summer
1. Chinook salmon, Spring	2. Coho salmon, N/A
3. Steelhead, Summer	3. Steelhead, Winter
4. Sockeye salmon, N/A	12. White sturgeon, N/A
14. Bull trout, N/A	

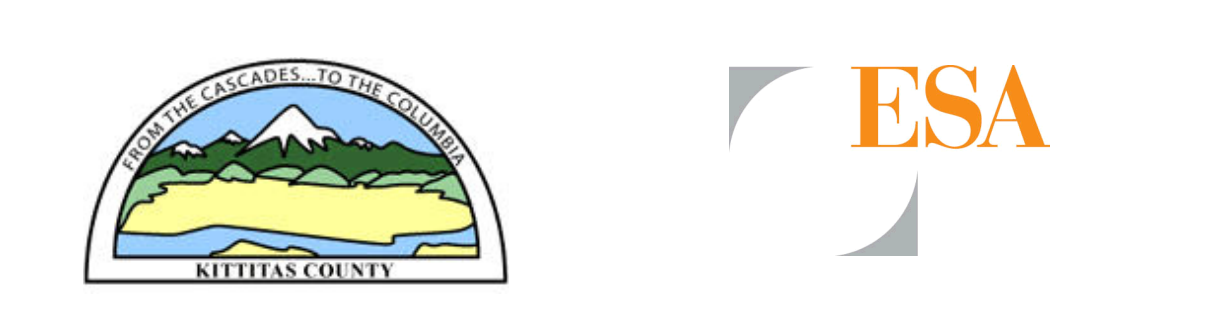
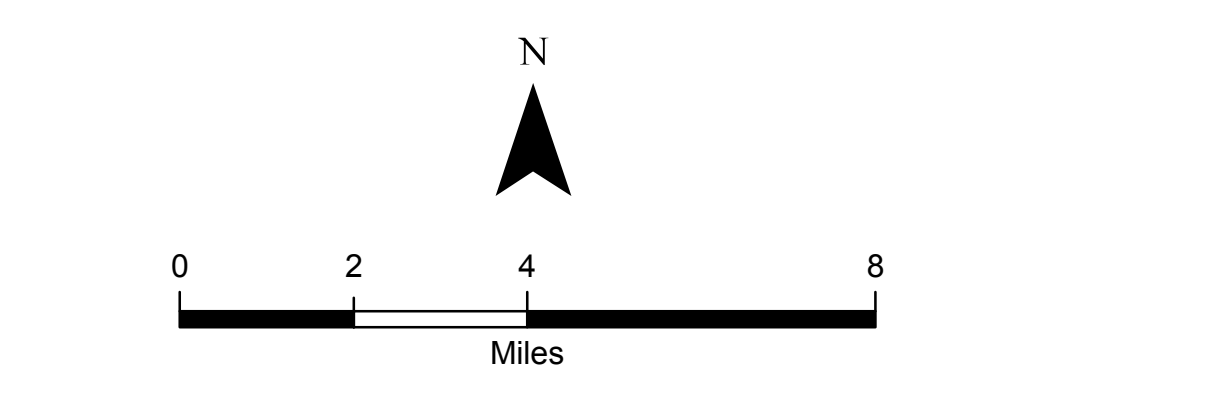
SALMONID FISH HABITAT CONSERVATION AREAS DATA SOURCES:

This map depicts the approximate location and extent of previously identified fish species, distribution and run times of fish species for Kittitas County. The data for this site was downloaded from the Streamnet.org in 2012. Additional aquatic habitat conservation areas may be present that are not shown on this map.

Coordinate System: State Plane NAD1983 (F1)
Washington South FIPS 4602

NOTE: Map data shown here are the property of the sources listed below. Inaccuracies may exist, and ESA implies no warranties or guarantees regarding any aspect of data depiction.

Data Sources: Streamnet, 2012; Kittitas County, 2011; Ecology, 2010; DNR, 2007; ESRI, 2010.



**Kittitas County Critical Areas Ordinance
Salmonid Fish Habitat Conservation Areas**

Kittitas County, Washington
December 2013

DISCLAIMER AND LIMITATION OF LIABILITY

The data used to make this map have been tested for accuracy, and every effort has been made to ensure that these data are timely, accurate and reliable. However, Kittitas County makes no guarantee or warranty to its accuracy as to labeling, dimensions, or placement or location of any map features contained herein. The boundaries depicted by these data are approximate, and are not necessarily accurate to surveying or engineering standards. These data are intended for informational purposes and should not be considered authoritative for engineering, navigational, legal and other site-specific uses. Kittitas County does not assume any legal liability or responsibility arising from the use of this map in a manner not intended by Kittitas County. In no event shall Kittitas County be liable for direct, indirect, incidental, consequential, special, or tort damages of any kind, including, but not limited to, loss of anticipated profits or benefits arising from use of or reliance on the information contained herein. The burden for determining fitness for use lies entirely with the user and the user is solely responsible for understanding the accuracy limitation of the information contained in this map.