

Kittitas County Critical Areas Ordinance (CAO) Update

CAC Meeting
August 2014

Introductions

The Bone Crusher



The Close Shaker

Really what they want is a hug.



The Limp, Dead Fish



The Misfire

Ok something is definitely off.



The Airball

Hey look a taco truck!!



Sweaty McSweaterson

It's like I've got a second pair of armpits!





Public Comment



A Look Back

CAC has already reviewed:

- General policies
- Report requirements
- Mitigation requirements
- Critical Aquifer Recharge Areas
- Frequently Flooded Areas

Recap of July meeting

- Feedback received
- Changes made



General Provisions

- Provided (mostly) in outline form
- Substantive content where appropriate
- Detailed language where needed to facilitate review of other chapters
- Topic of October CAC meeting

Today's Focus



Photo by USFWS

Fish and Wildlife Habitat
Conservation Areas
(FWHCAs)



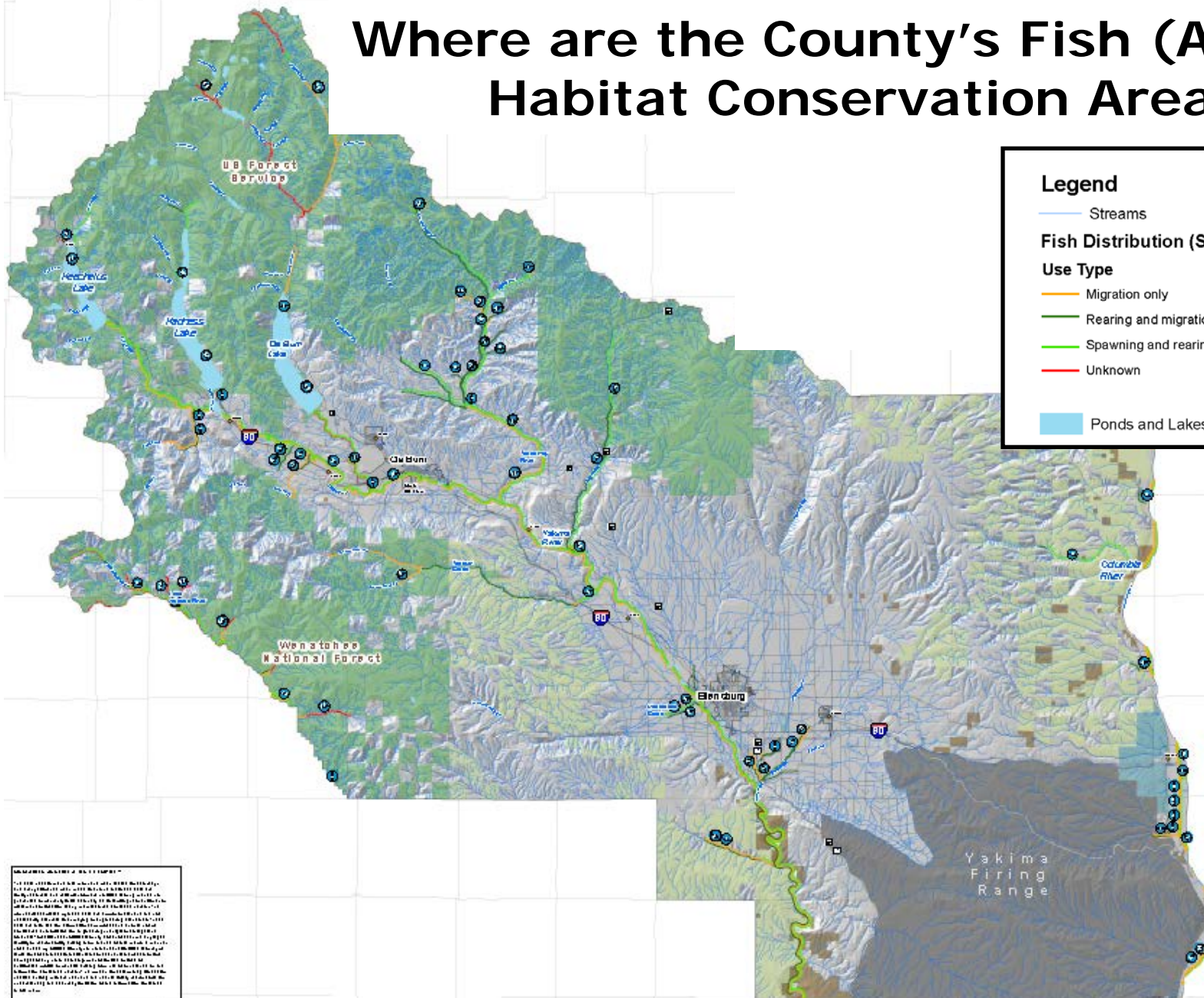
What are Fish and Wildlife Habitat Conservation Areas?



- Areas where endangered, threatened, and sensitive species have a primary association
- Habitats and species of local importance, as determined locally
- Naturally occurring ponds under twenty acres
- Waters of the state
- Lakes, ponds, streams, and rivers planted with game fish by a governmental or tribal entity
- State natural area preserves, resource conservation areas, and state wildlife areas

[WAC 365-190-130]

Where are the County's Fish (Aquatic) Habitat Conservation Areas?



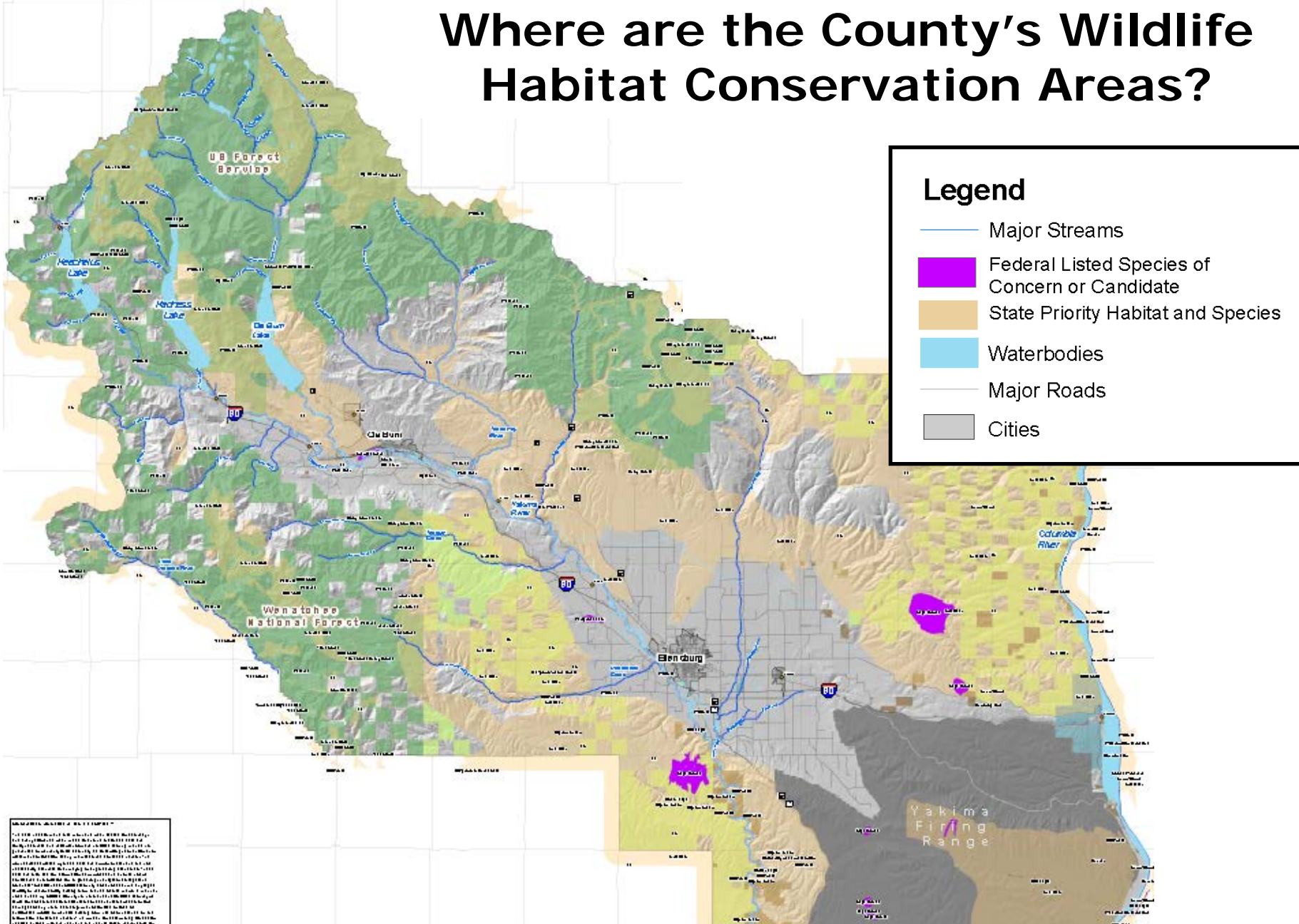
WENATCHEE NATIONAL FOREST

US Forest Service

Wenatchee National Forest

Yakima Firing Range

Where are the County's Wildlife Habitat Conservation Areas?





Why do Fish and Wildlife Habitat Conservation Areas Matter?



POLICY DISCUSSION

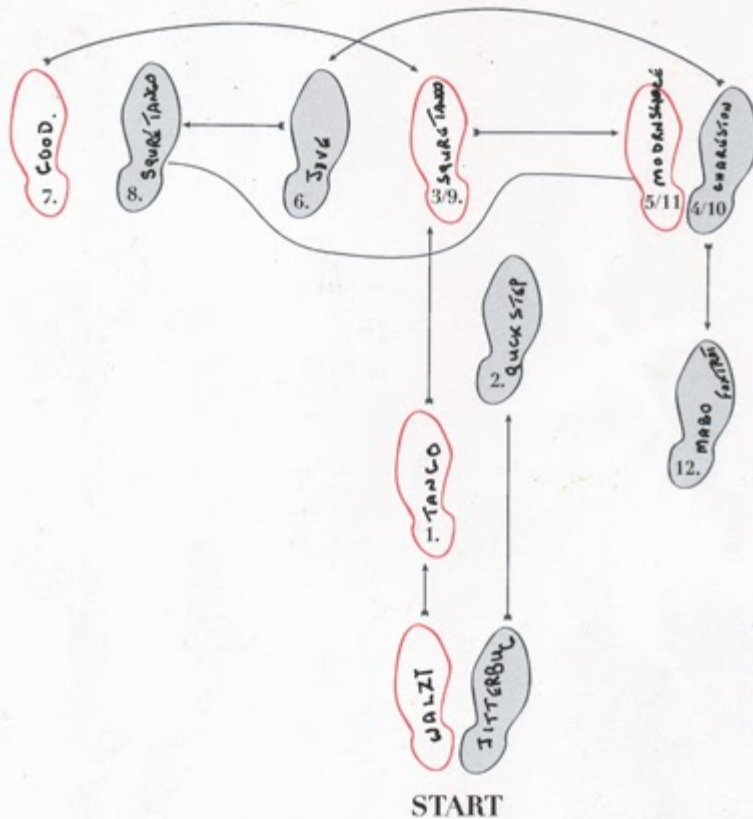
(REFER TO POLICY WORKING DRAFT)

REGULATION DISCUSSION

(REFER TO REGULATIONS WORKING DRAFT)

Key Code Focus Areas

- Permitted activities within habitat areas and their buffers. Current list:
 - Clearing and grading
 - Stream bank stabilization
 - Docks and boat ramps
 - Roads, trails, and bridges
 - Utility facilities
 - Flood protection structures
 - Instream structures
 - Stormwater facilities
 - Wells and sewage systems
- Habitats and Species of Local Importance designation process
- Habitat boundary survey requirement
- Reporting requirements



Next Steps

- Feedback on draft policies/regulations
- Feedback on BAS recommendations (matrix)
- Next Meeting: September 17th