

**Kittitas County
Critical Areas
Ordinance (CAO)
Update**

CAC Meeting
July 2014

Introductions

The Bone Crusher



The Close Shaker

Really what they want is a hug.



The Limp, Dead Fish



The Misfire

Ok something is definitely off.



The Airball

Hey look a loco truck!!



Sweaty McSweaterson

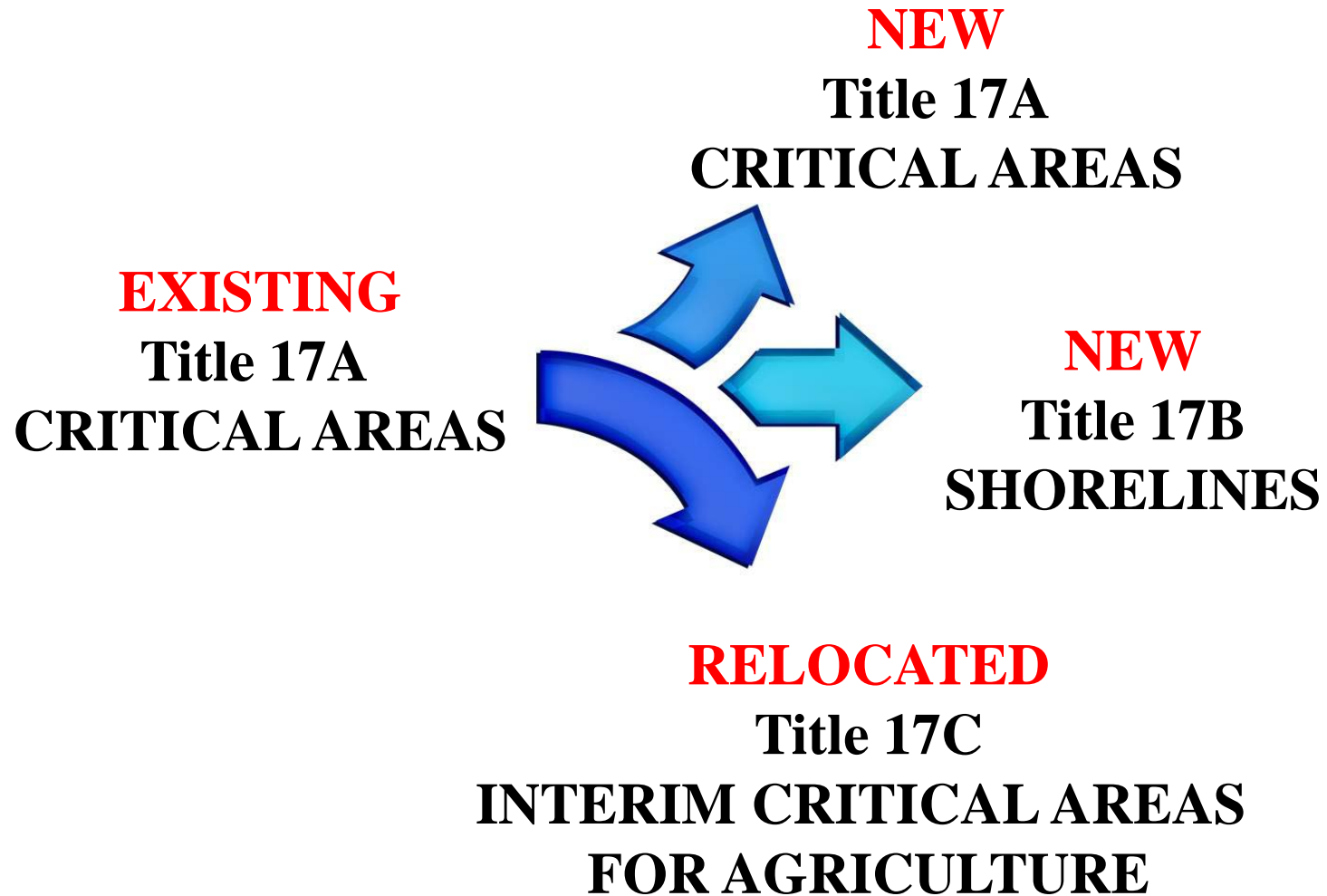
It's like I've got a second pair of armpits!





Public Comment

Regulation Overview (context)



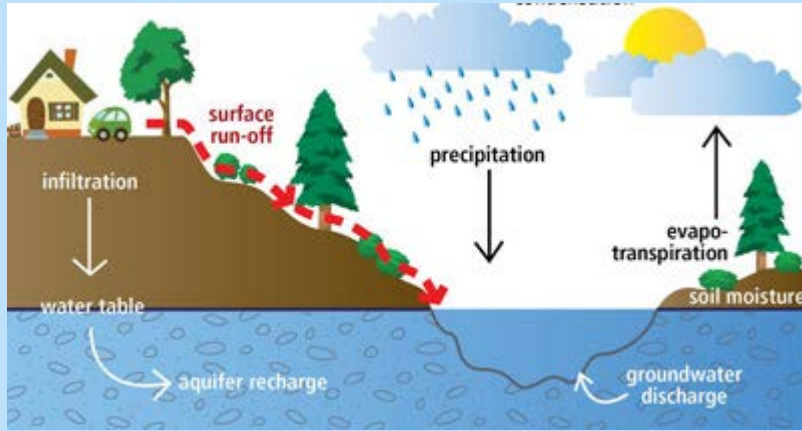
We Need Your Help!

Potential for regulatory flexibility varies:

- **More flexibility:** BAS does not address issue and/or County-specific issues
- **Some flexibility:** Regulations supported by BAS and similar to standards found in other CAOs
- **No flexibility:** Regulations required by RCW/WAC

Chapter Outline and General Provisions

Today's Focus



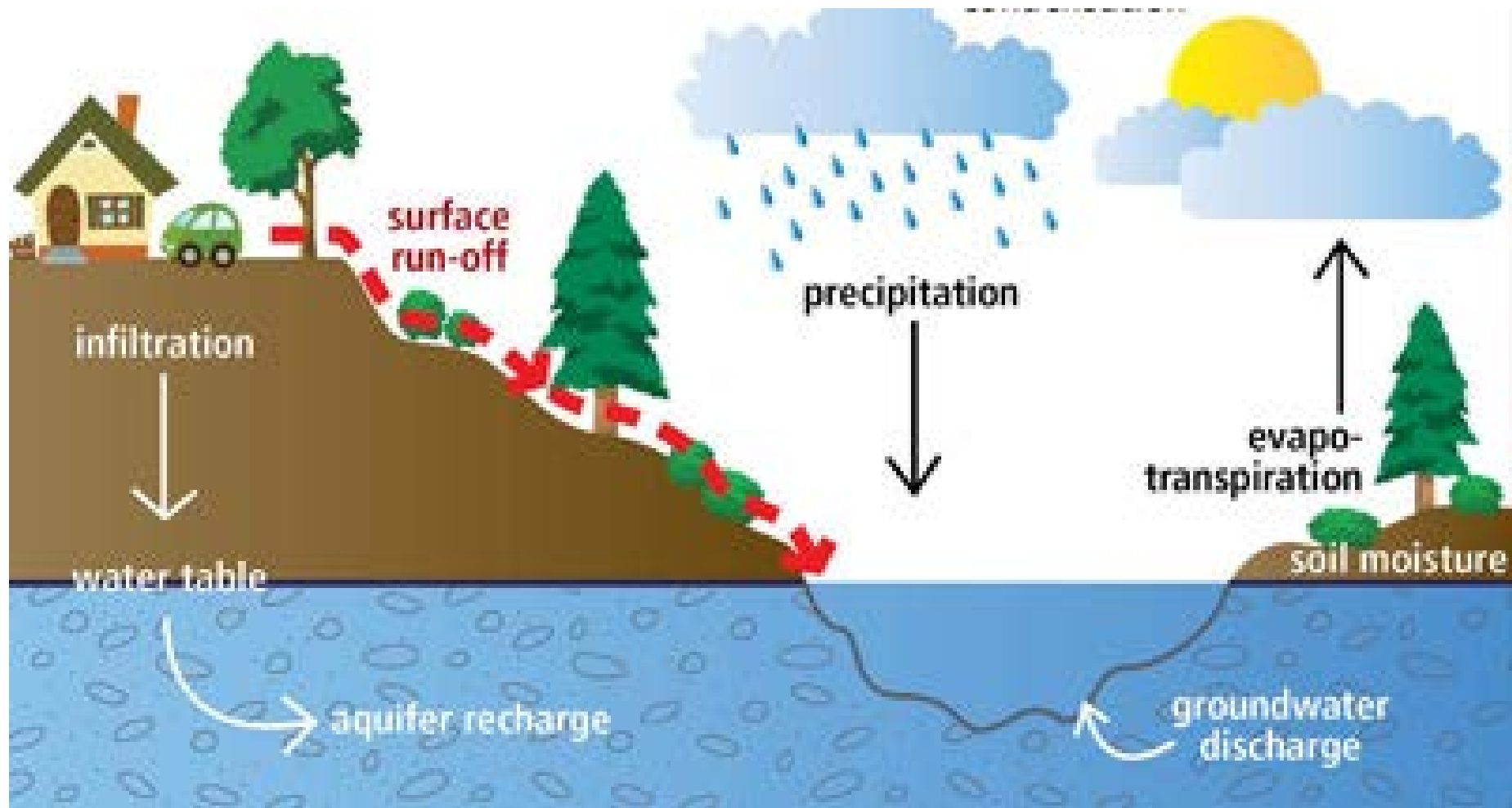
Critical Aquifer Recharge Areas
(CARAs)



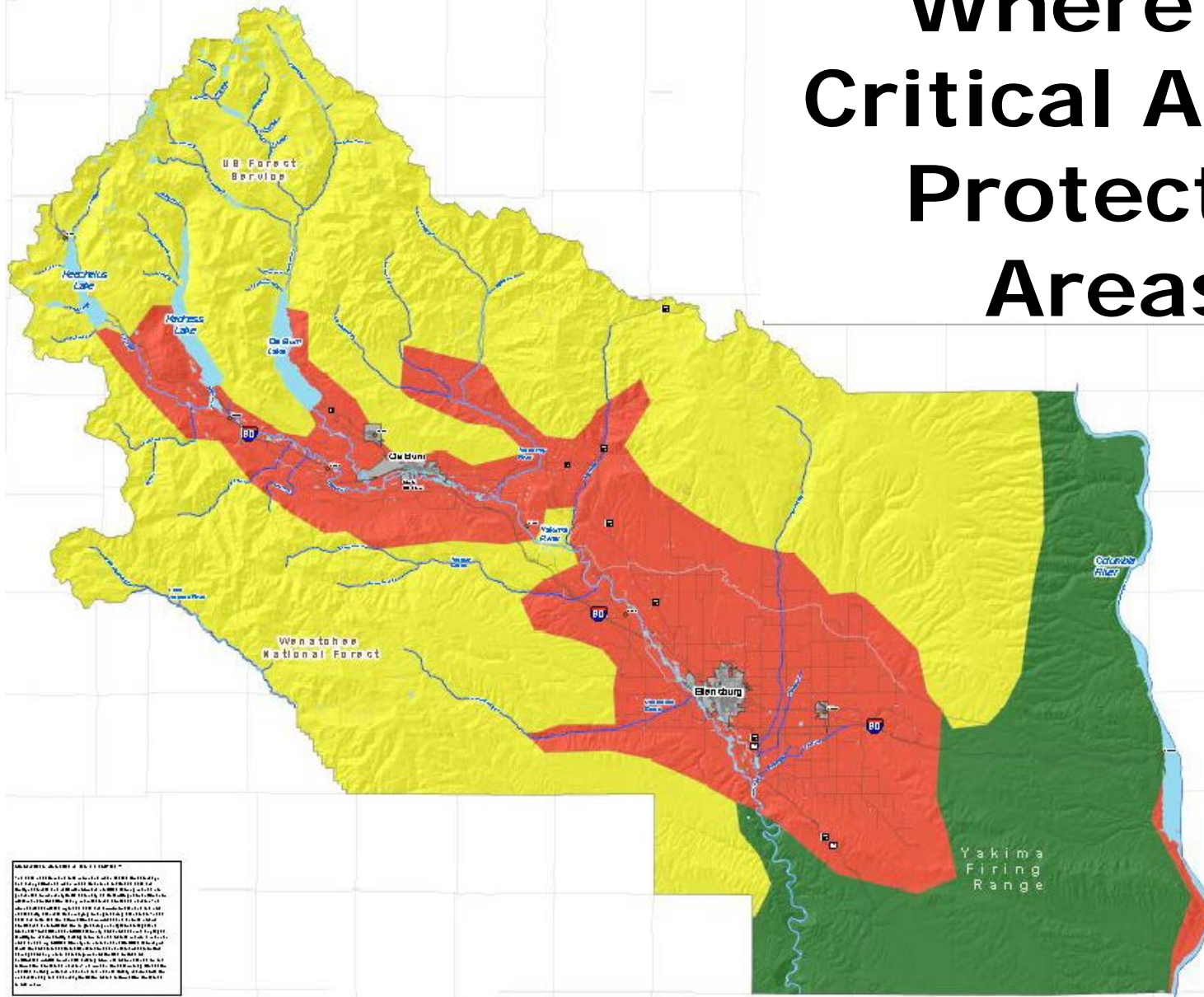
Frequently Flooded Areas
(FFAs)



What are Critical Aquifer Protection Areas?



Where are Critical Aquifer Protection Areas?



Why do Critical Aquifer Protection Areas Matter?



POLICY DISCUSSION

(REFER TO POLICY WORKING DRAFT)

REGULATION DISCUSSION

(REFER TO REGULATIONS WORKING DRAFT)

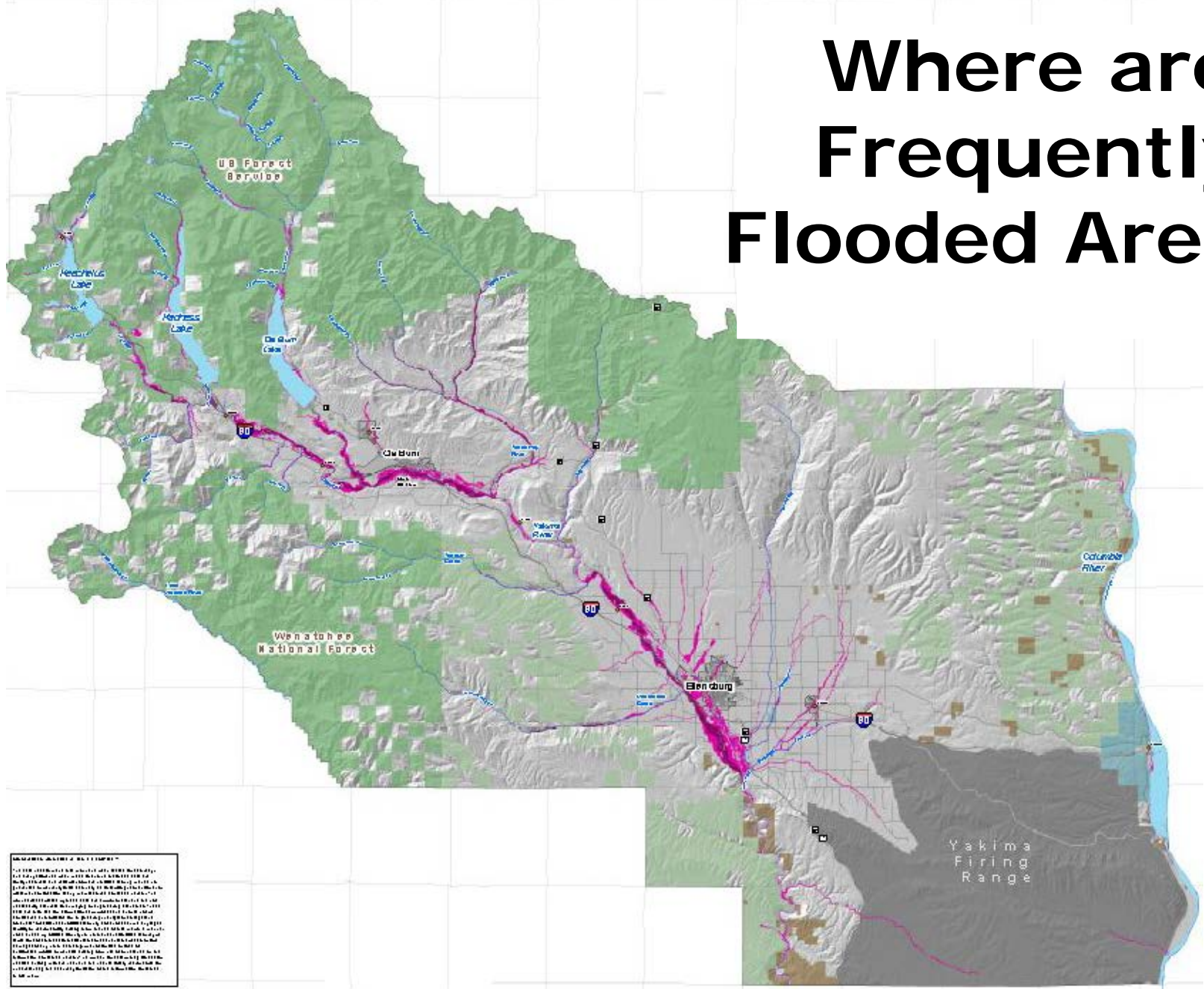
Key Code Focus Areas

- Use of fertilizers, herbicides, and pesticides
- List of high-risk uses that require special studies

What are Frequently Flooded Areas?



Where are Frequently Flooded Areas?



LEGEND

1. Areas shaded in pink on this map are those that have been identified as frequently flooded areas by the National Flood Insurance Program (NFIP) and are included in the National Flood Hazard Data (NFHD) database. These areas are subject to special flood hazard insurance requirements.

2. Areas shaded in light blue on this map are those that have been identified as frequently flooded areas by the National Flood Insurance Program (NFIP) and are included in the National Flood Hazard Data (NFHD) database. These areas are subject to special flood hazard insurance requirements.

3. Areas shaded in light green on this map are those that have been identified as frequently flooded areas by the National Flood Insurance Program (NFIP) and are included in the National Flood Hazard Data (NFHD) database. These areas are subject to special flood hazard insurance requirements.

4. Areas shaded in light grey on this map are those that have been identified as frequently flooded areas by the National Flood Insurance Program (NFIP) and are included in the National Flood Hazard Data (NFHD) database. These areas are subject to special flood hazard insurance requirements.

5. Areas shaded in light brown on this map are those that have been identified as frequently flooded areas by the National Flood Insurance Program (NFIP) and are included in the National Flood Hazard Data (NFHD) database. These areas are subject to special flood hazard insurance requirements.

Why do Frequently Flooded Areas Matter?



POLICY DISCUSSION

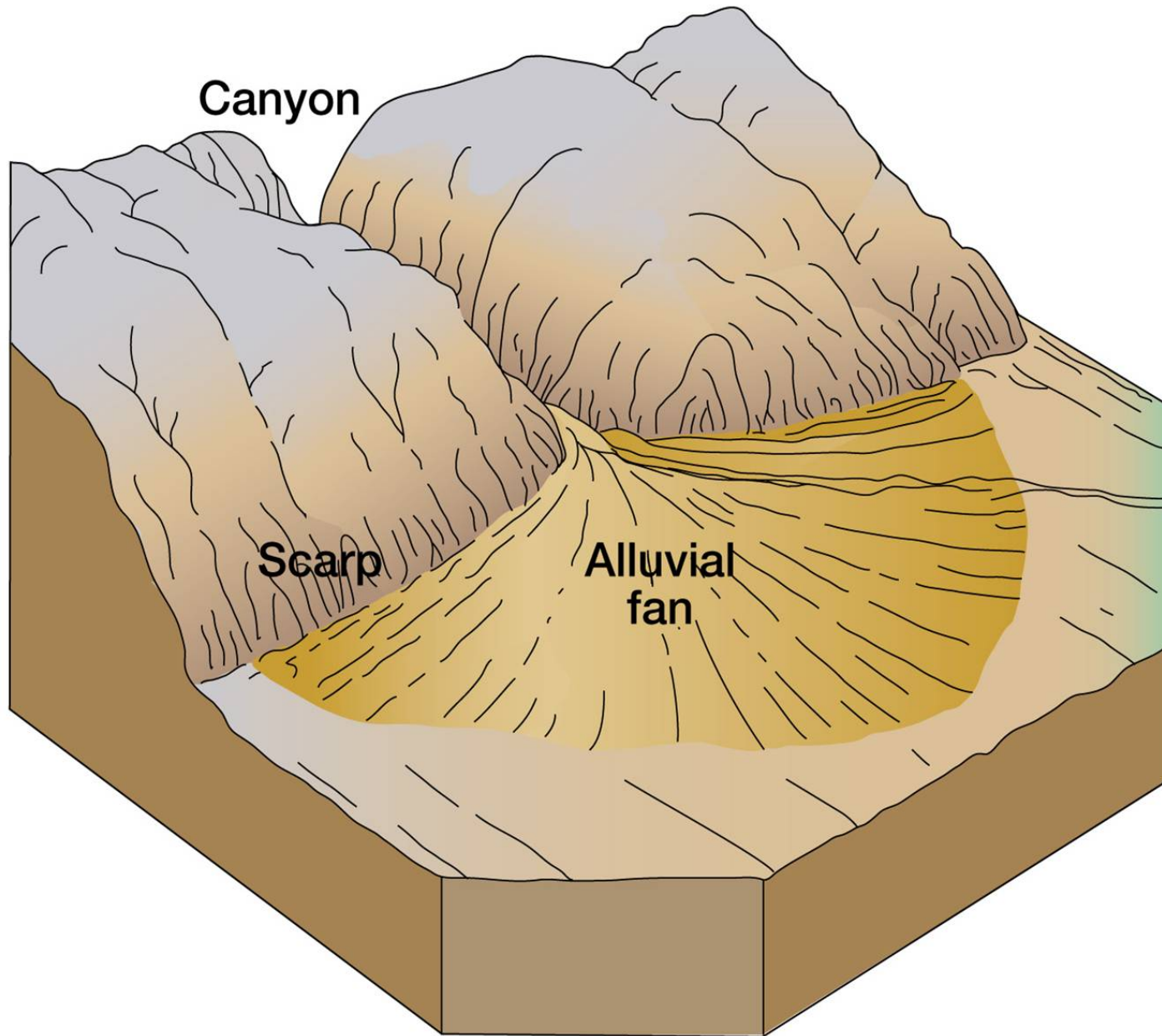
(REFER TO POLICY WORKING DRAFT)

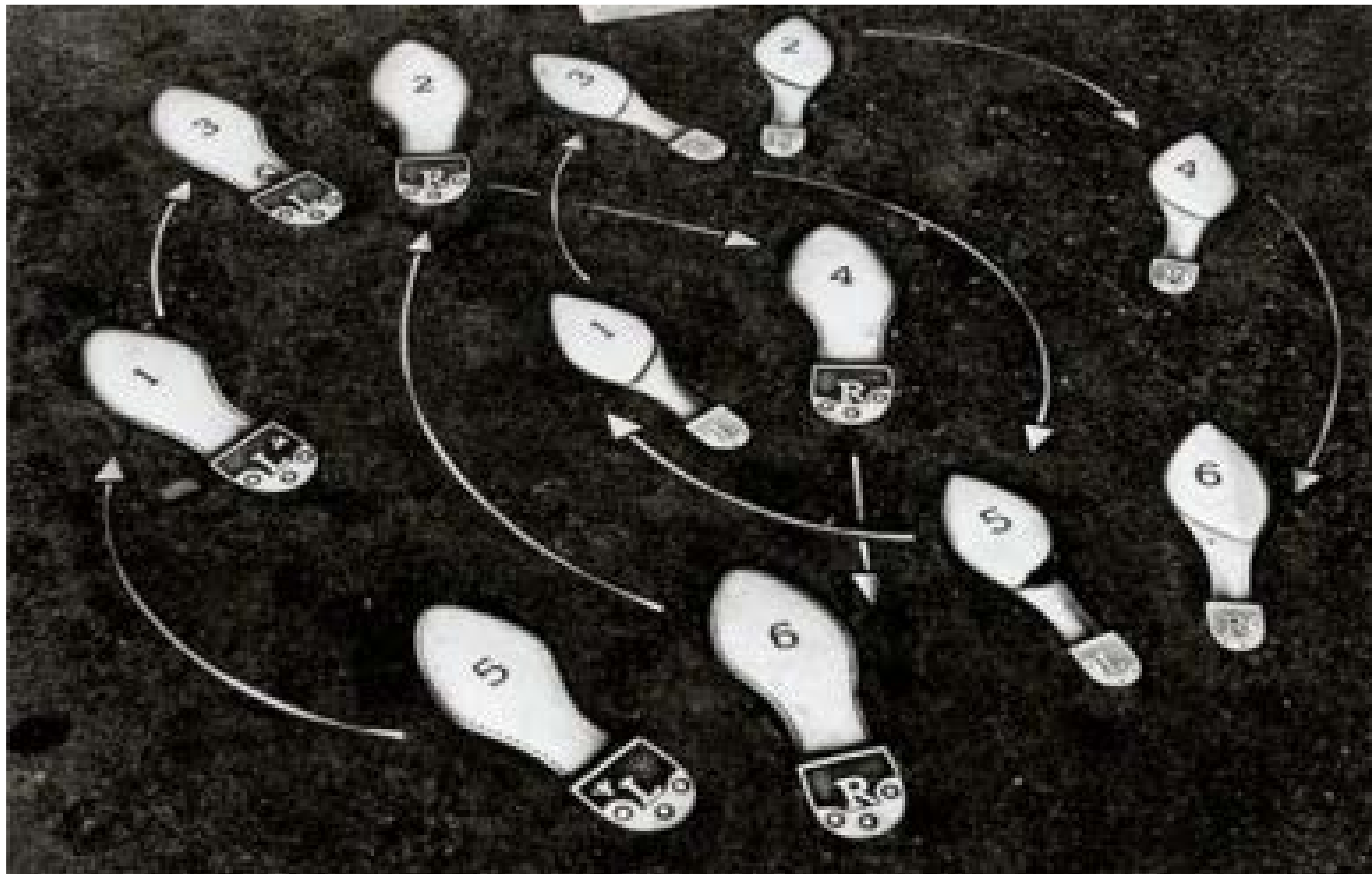
REGULATION DISCUSSION

(REFER TO REGULATIONS WORKING DRAFT)

Key Code Focus Areas

- Designating flood areas not shown on FEMA maps
- Threshold for requiring floodplain storage/mitigation
- Alluvial fans





Next Steps