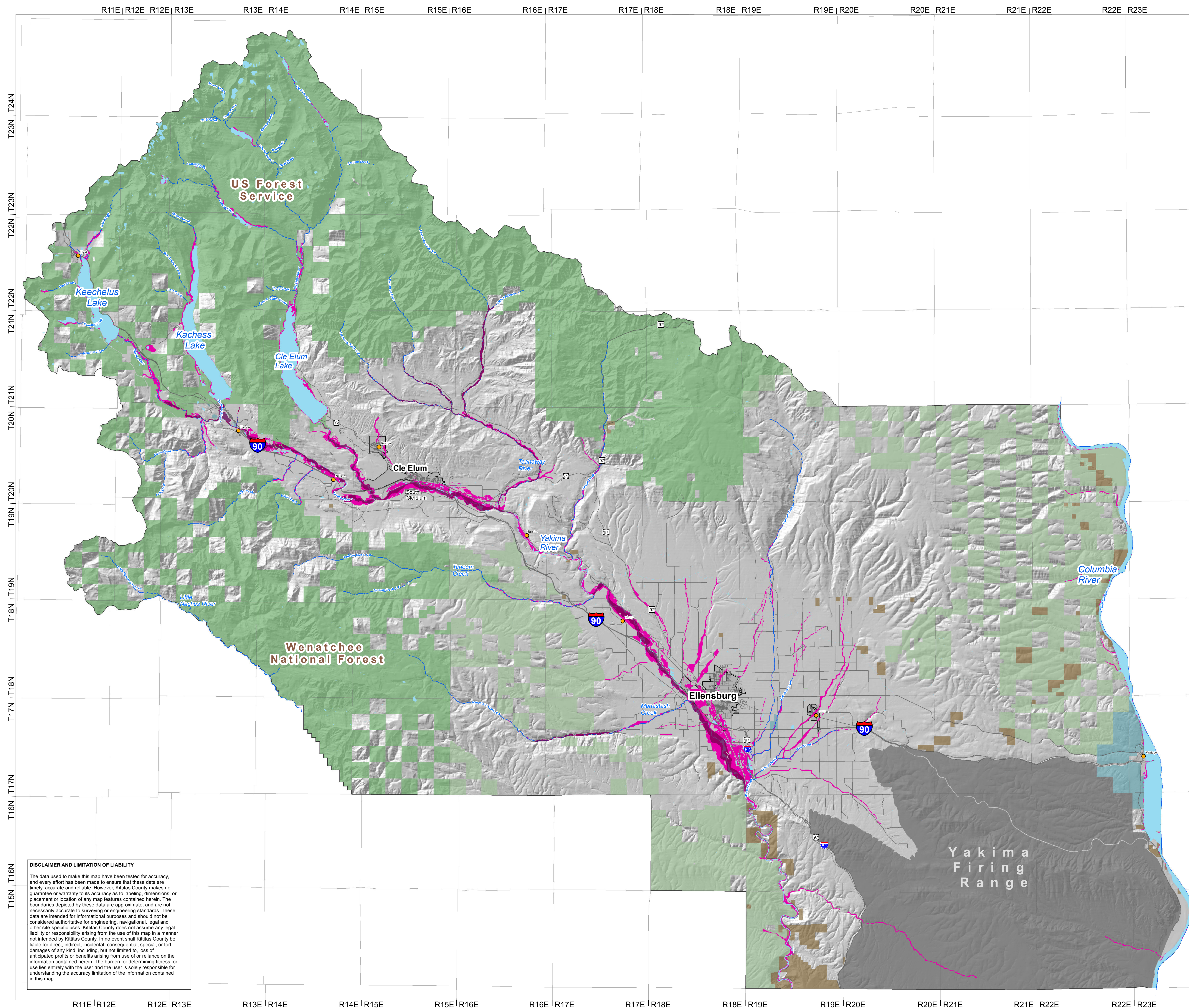
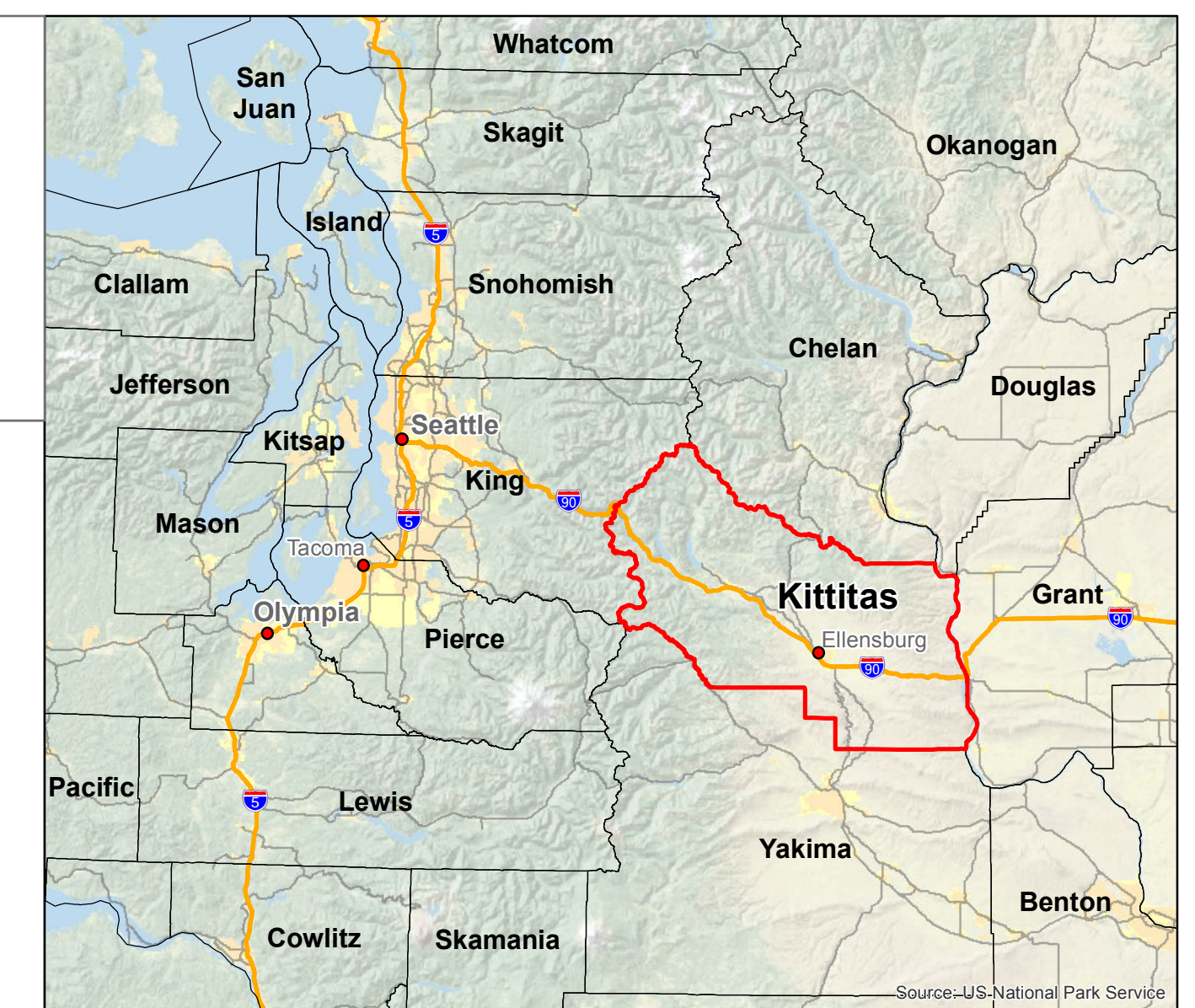


KITTITAS COUNTY CRITICAL AREAS ORDINANCE - FREQUENTLY FLOODED AREAS



Legend

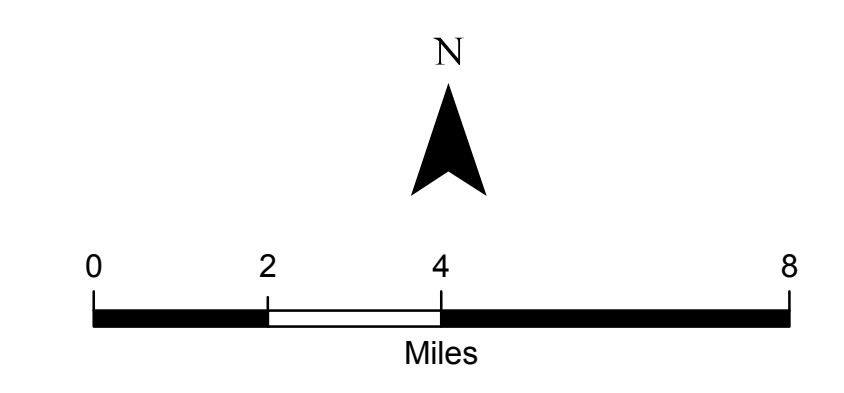
- Streams
- FEMA Floodway
- FEMA 100-year Floodplain
- Waterbodies
- Major Roads
- Cities
- Public Lands**
- US Bureau of Land Management
- US Dept. of Defense
- US Forest Service
- WDFW
- State Parks
- County Boundary

FREQUENTLY FLOODED AREAS DATA SOURCES:
 Frequently flooded areas are areas located along major rivers and streams where the depth, velocity, intensity and frequency of flood water during major events presents a risk to human life and property. These areas are subject to a one percent recurrence interval of flood water inundation or a 100 year base flood as mapped by the Federal Emergency Management Agency's (FEMA) Flood Insurance Rate Maps (FIRM) for Kittitas County. The data source for the Floodplains and Floodway are from FEMA (1996).

Coordinate System: State Plane NAD1983 (F)
 Washington South FIPS 4602

NOTE: Map data shown here are the property of the sources listed below. Inaccuracies may exist, and ESA implies no warranties or guarantees regarding any aspect of data depiction.

Data Sources: FEMA, 1996; Kittitas County, 2011; Ecology, 2010; DNR, 2007; ESRI, 2010.



Kittitas County Critical Areas Ordinance Frequently Flooded Areas

Kittitas County, Washington
 December 2013

DISCLAIMER AND LIMITATION OF LIABILITY
 The data used to make this map have been tested for accuracy, and every effort has been made to ensure that these data are timely, accurate and reliable. However, Kittitas County makes no guarantee or warranty to its accuracy as to labeling, dimensions, or placement or location of any map features contained herein. The boundaries depicted by these data are approximate, and are not necessarily accurate to surveying or engineering standards. These data are intended for informational purposes and should not be considered authoritative for engineering, navigational, legal and other site-specific uses. Kittitas County does not assume any legal liability or responsibility arising from the use of this map in a manner not intended by Kittitas County. In no event shall Kittitas County be liable for direct, indirect, incidental, consequential, special, or tort damages of any kind, including, but not limited to, loss of anticipated profits or benefits arising from use of or reliance on the information contained herein. The burden for determining fitness for use lies entirely with the user and the user is solely responsible for understanding the accuracy limitation of the information contained in this map.