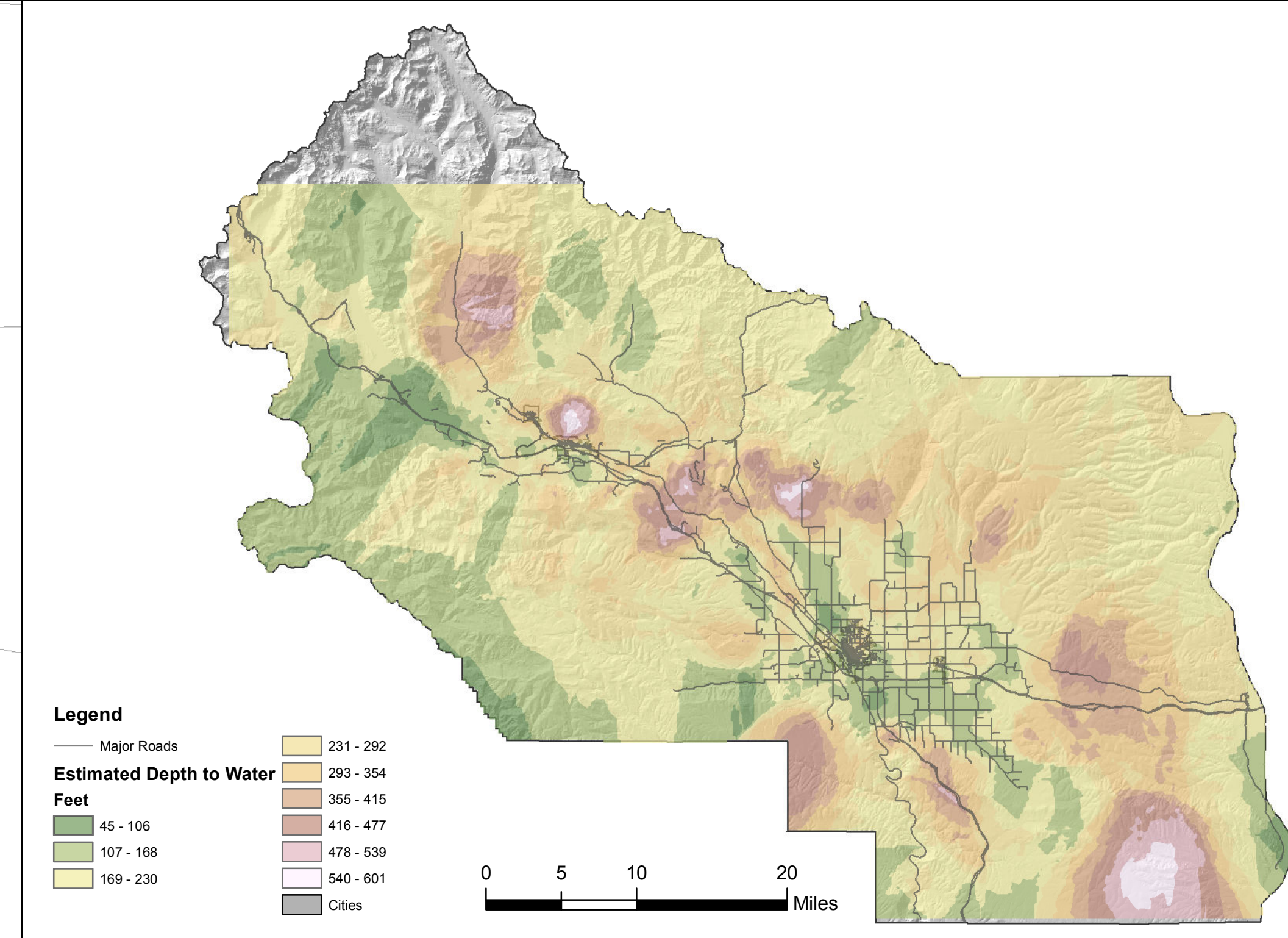
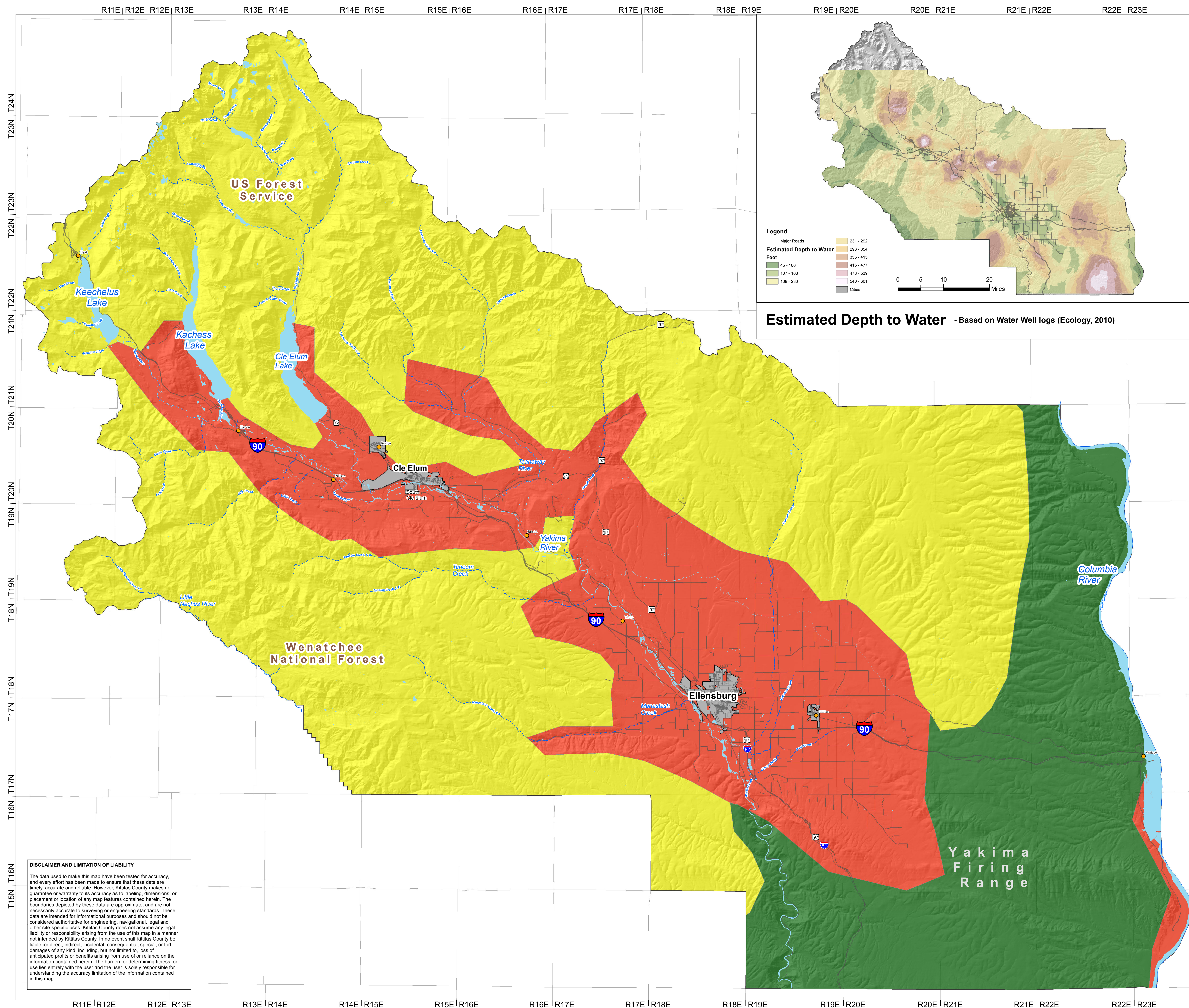
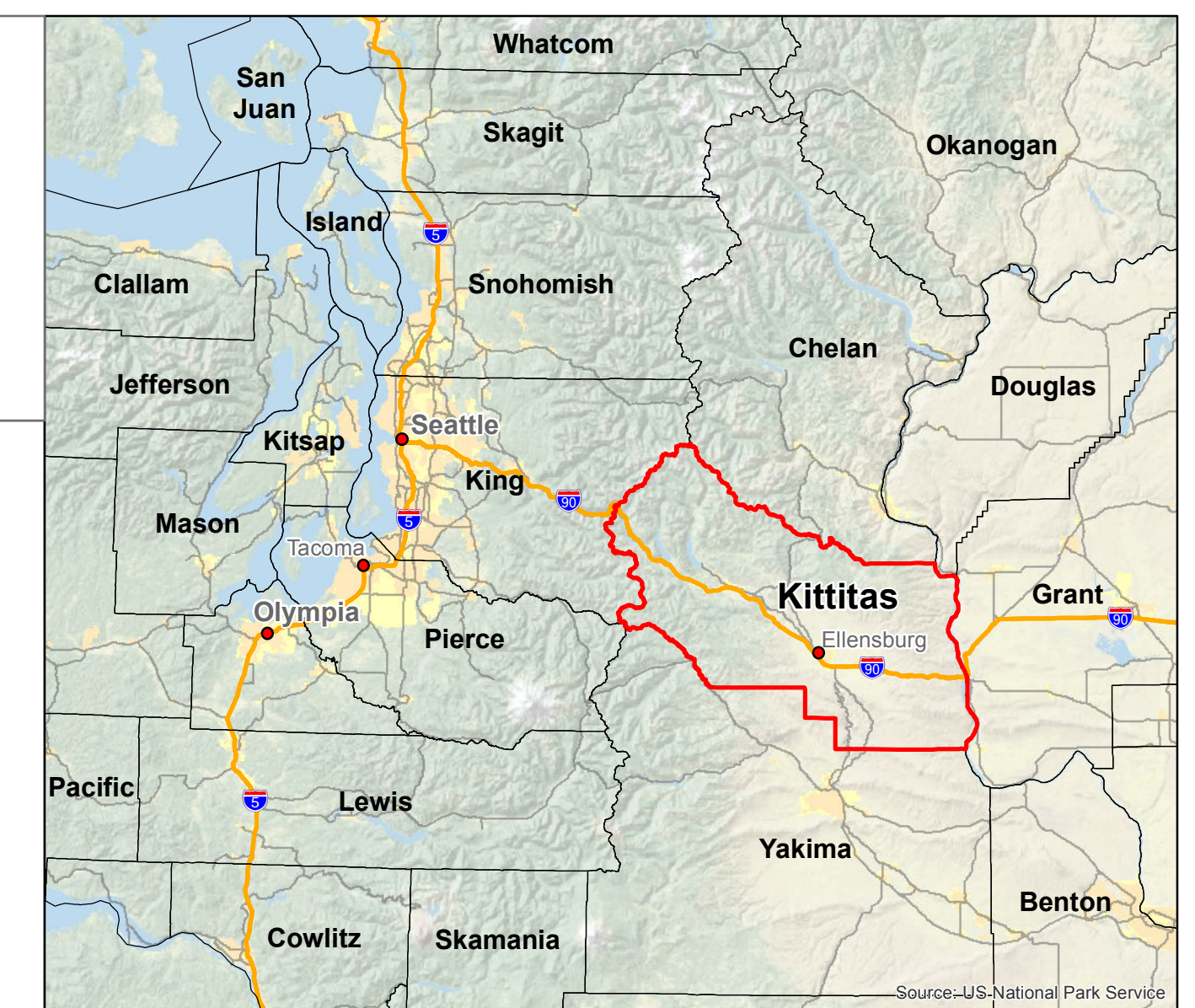


# KITTITAS COUNTY CRITICAL AREAS ORDINANCE - CRITICAL AQUIFER RECHARGE AREAS



Estimated Depth to Water - Based on Water Well logs (Ecology, 2010)

## Legend

- Aquifer Susceptibility**
- High (Red)
  - Medium (Yellow)
  - Low (Green)
- Streams (Blue line)
- Waterbodies (Blue area)
- Major Roads (Grey line)
- Cities (Grey area)

### CRITICAL AQUIFER RECHARGE AREAS DATA SOURCES:

This map is very preliminary and should be used for planning purposes only. Aquifer susceptibility was mapped in support of Kittitas County's Critical Areas update. Aquifer susceptibility was estimated using Washington Department of Land and Natural Resources surficial geology (2010), Ecology well data (2010) and NRCS soils (2003) information as well as data from USGS on aquifers (2003) and PRISM precipitation data (2000). The methods used were generally consistent with the Department of Ecology's "Guidelines for Establishing Critical Aquifer Recharge Areas" (Cook, 2002).

High = structural fill basin aquifer + more extensive alluvial deposits + higher shallow well density.

Medium = Few shallow wells + bedrock aquifer + >15"/year precipitation based on PRISM.

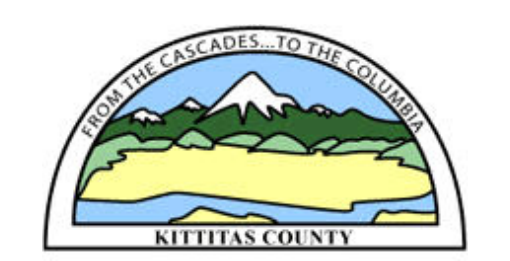
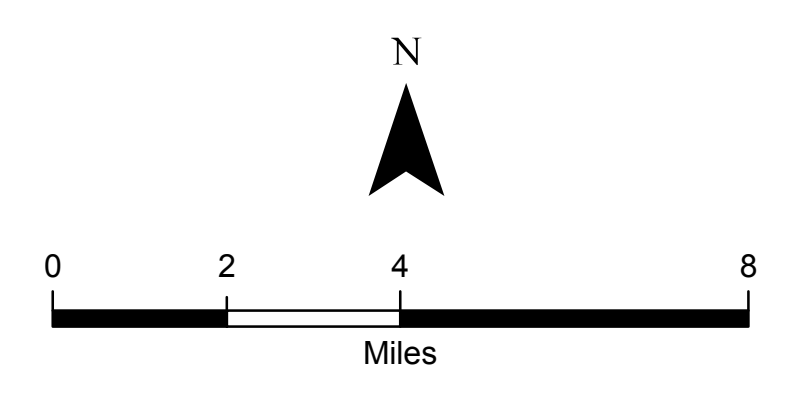
Low = Low well density + bedrock aquifer + <15"/year precipitation based on PRISM.

The estimated depth to water surface was created using interpolation methods in ArcGIS. We used the Ecology wells (well depth field) to create the surface layer.

Coordinate System: State Plane NAD1983 (F1)  
Washington South FIPS 4602

NOTE: Map data shown here are the property of the sources listed below. Inaccuracies may exist, and ESA implies no warranties or guarantees regarding any aspect of data depiction.

Data Sources: DNR, 2010, NRCS, 2003; Ecology, 2010, PRISM, 2000, ESRI, 2010, Kittitas County, 2012.



## Kittitas County Critical Areas Ordinance Critical Aquifer Recharge Areas

Kittitas County, Washington  
December 2013

**DISCLAIMER AND LIMITATION OF LIABILITY**  
The data used to make this map have been tested for accuracy, and every effort has been made to ensure that these data are timely, accurate and reliable. However, Kittitas County makes no guarantee or warranty to its accuracy as to labeling, dimensions, or placement or location of any map features contained herein. The boundaries depicted by these data are approximate, and are not necessarily accurate to surveying or engineering standards. These data are intended for informational purposes and should not be considered authoritative for engineering, navigational, legal and other site-specific uses. Kittitas County does not assume any legal liability or responsibility arising from the use of this map in a manner not intended by Kittitas County. In no event shall Kittitas County be liable for direct, indirect, incidental, consequential, special, or tort damages of any kind, including, but not limited to, loss of anticipated profits or benefits arising from use of or reliance on the information contained herein. The burden for determining fitness for use lies entirely with the user and the user is solely responsible for understanding the accuracy limitation of the information contained in this map.