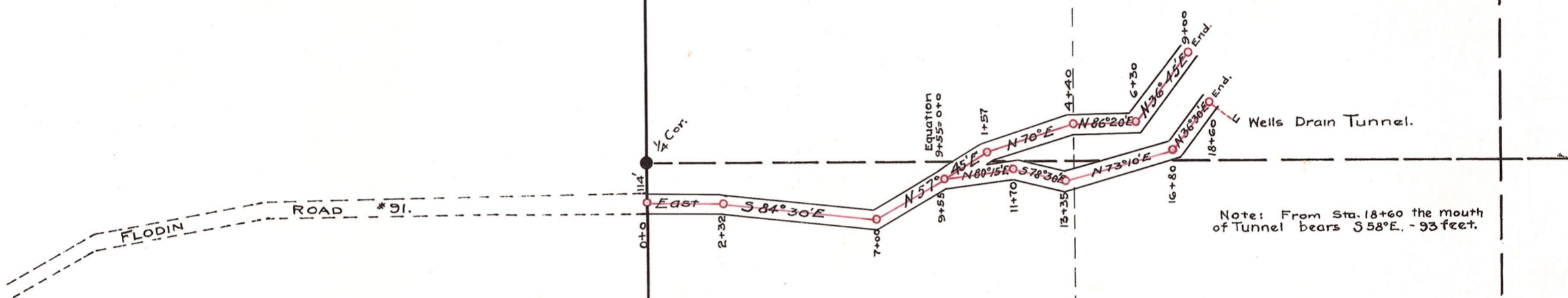


Williams Creek Road

MAP OF  
WILLIAMS CREEK ROAD  
IN SEC. 31, TOWNSHIP 21 NORTH, RANGE 18 E.W.M.  
Scale: 1 in. = 400 ft. Oct. 18, 1912.

*Chas. J. Jordan*  
County Engineer.



Note: From Sta. 18+60 the mouth of Tunnel bears S 58° E. - 93 feet.

T21N, R17E. T20N, R17E. 1 6 995.5'

36 31

T21N, R18E. T20N, R18E.

23-8-1