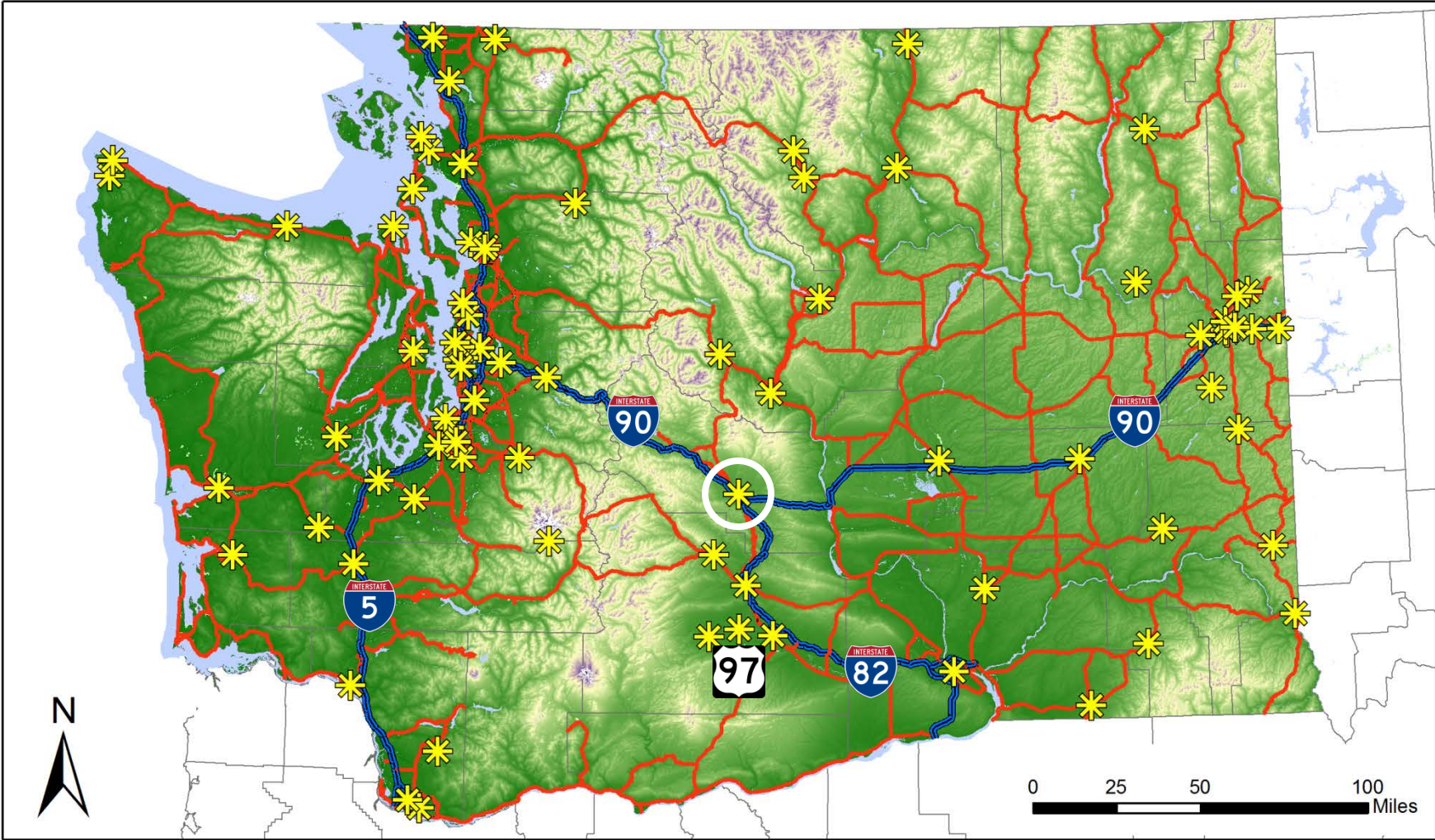
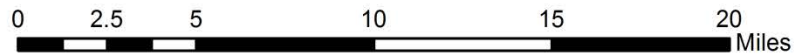
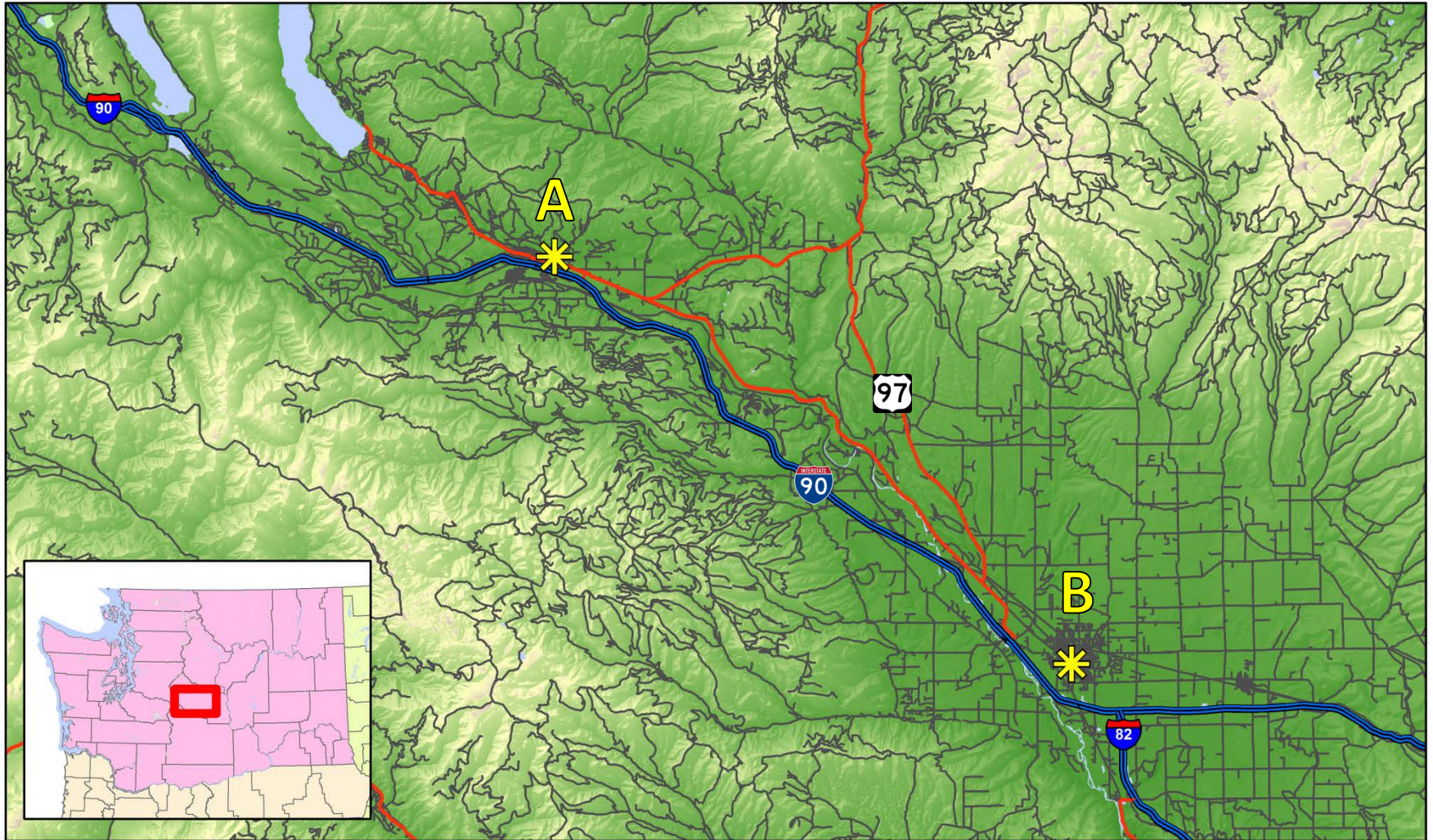


Statewide Monitoring Network



N = 81

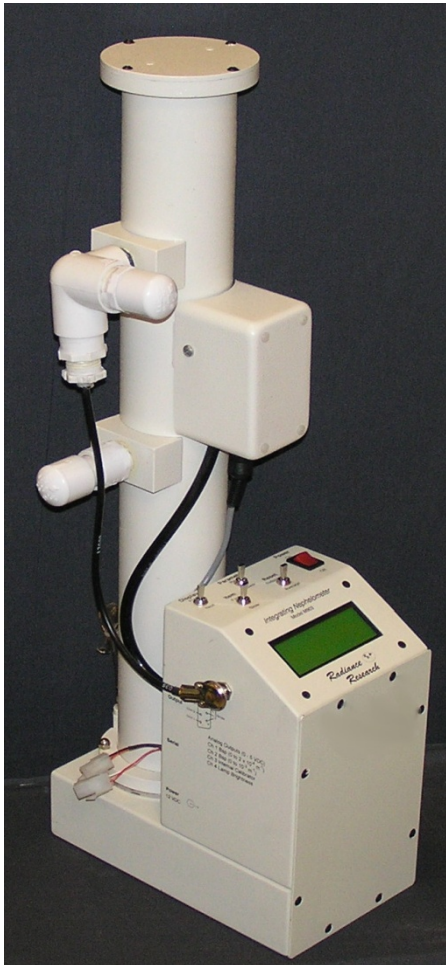
Kittitas County Monitoring Locations



A = Cle Elum ('07-'08)

B = Ellensburg ('03 – Present)

Ellensburg Monitoring Site



Roof of Hal Holmes Center

Nephelometer

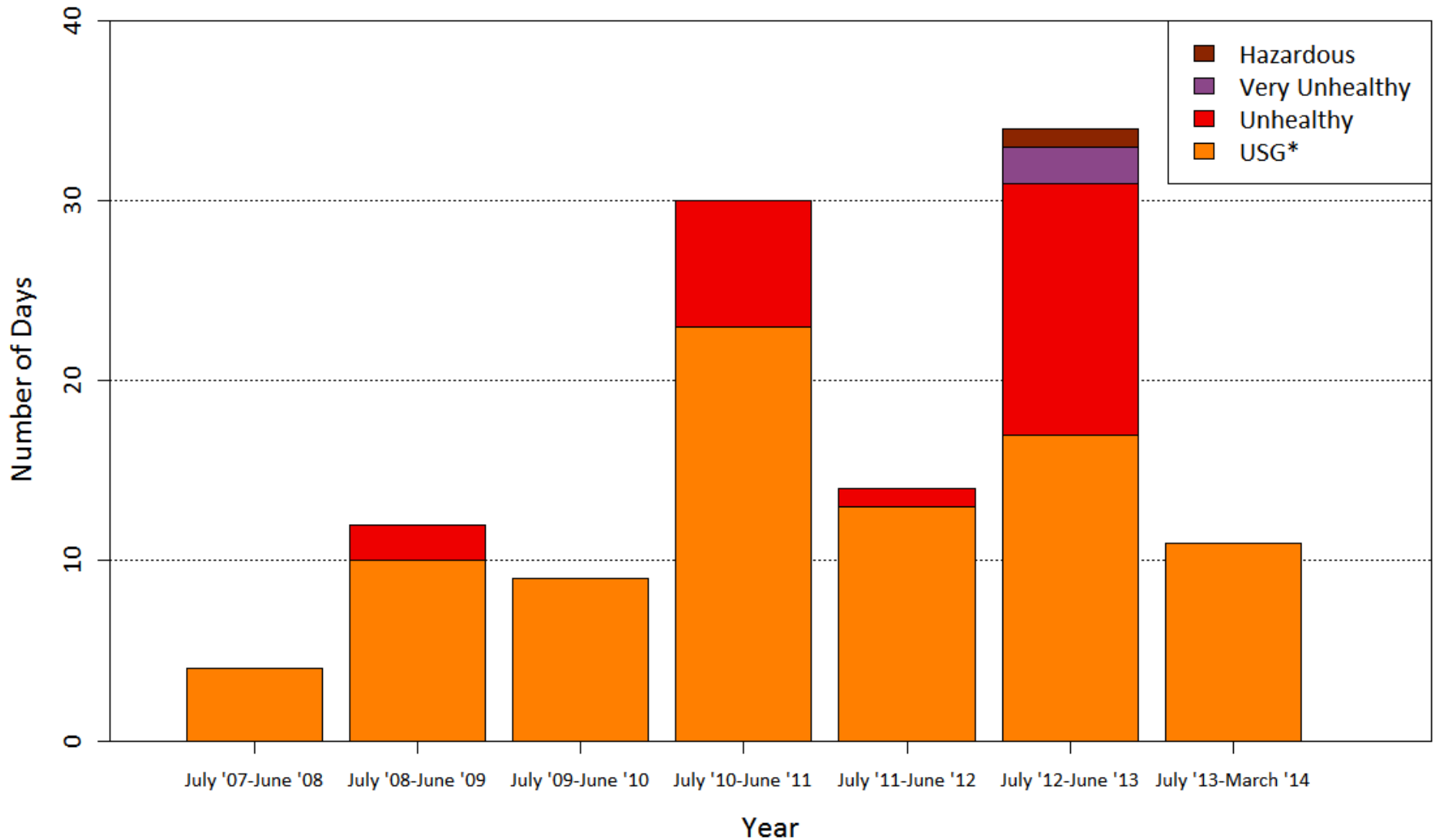
- Measures light scattering
- We convert to PM_{2.5} concentration

**WA Air Quality Advisory (WAQA)
Category**

**PM2.5 Concentration
($\mu\text{g}/\text{m}^3$)**

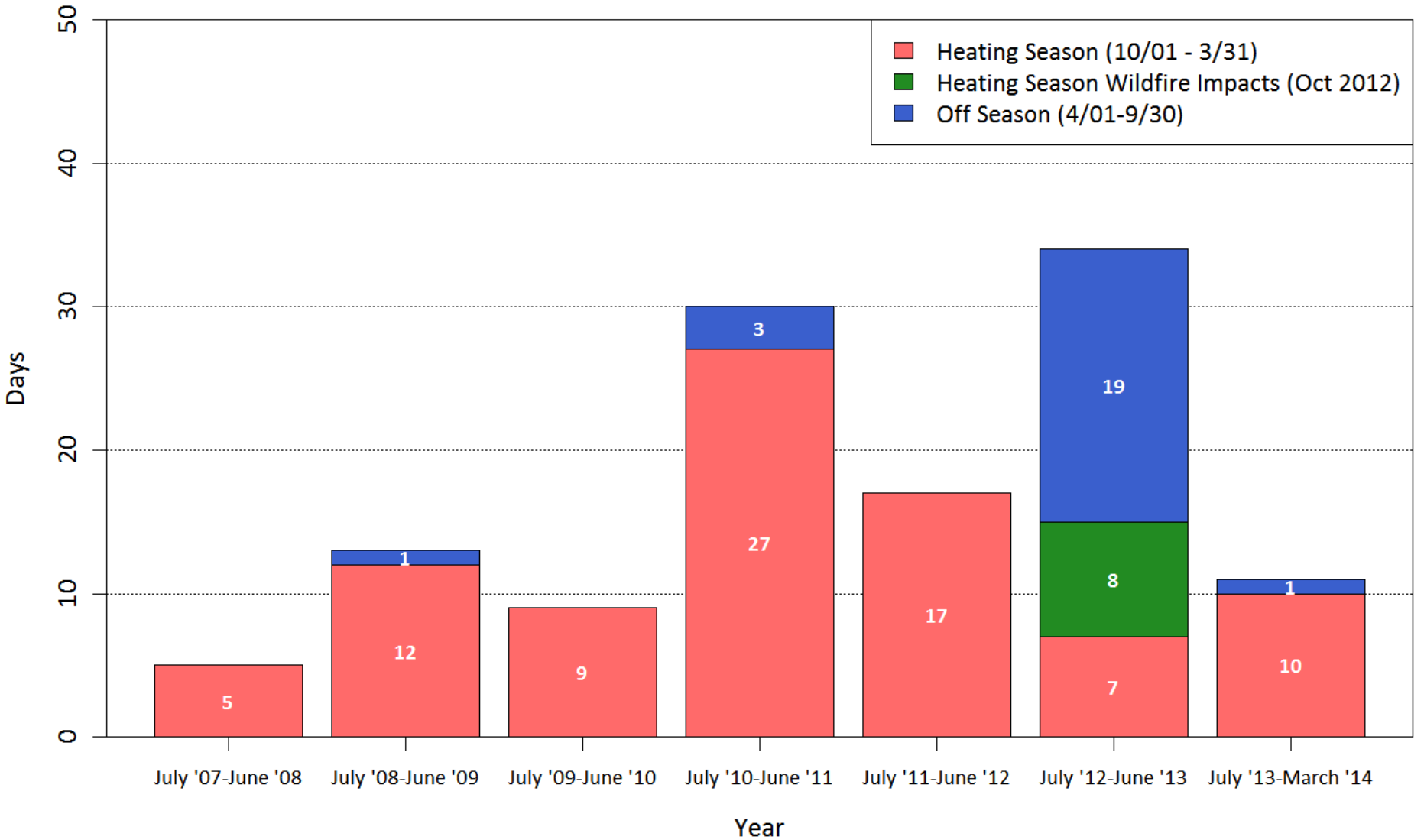
Good	0 to 13.4	
Moderate	13.5 to 20.4	Health goal ($20 \mu\text{g}/\text{m}^3$)
Unhealthy for Sensitive Groups	20.5 to 35.4	National standard ($35 \mu\text{g}/\text{m}^3$)
Unhealthy	35.5 to 80.4	
Very Unhealthy	80.5 to 135.4	
Hazardous	>135.4	

Ellensburg PM2.5: Days per Year above 20ug/m³

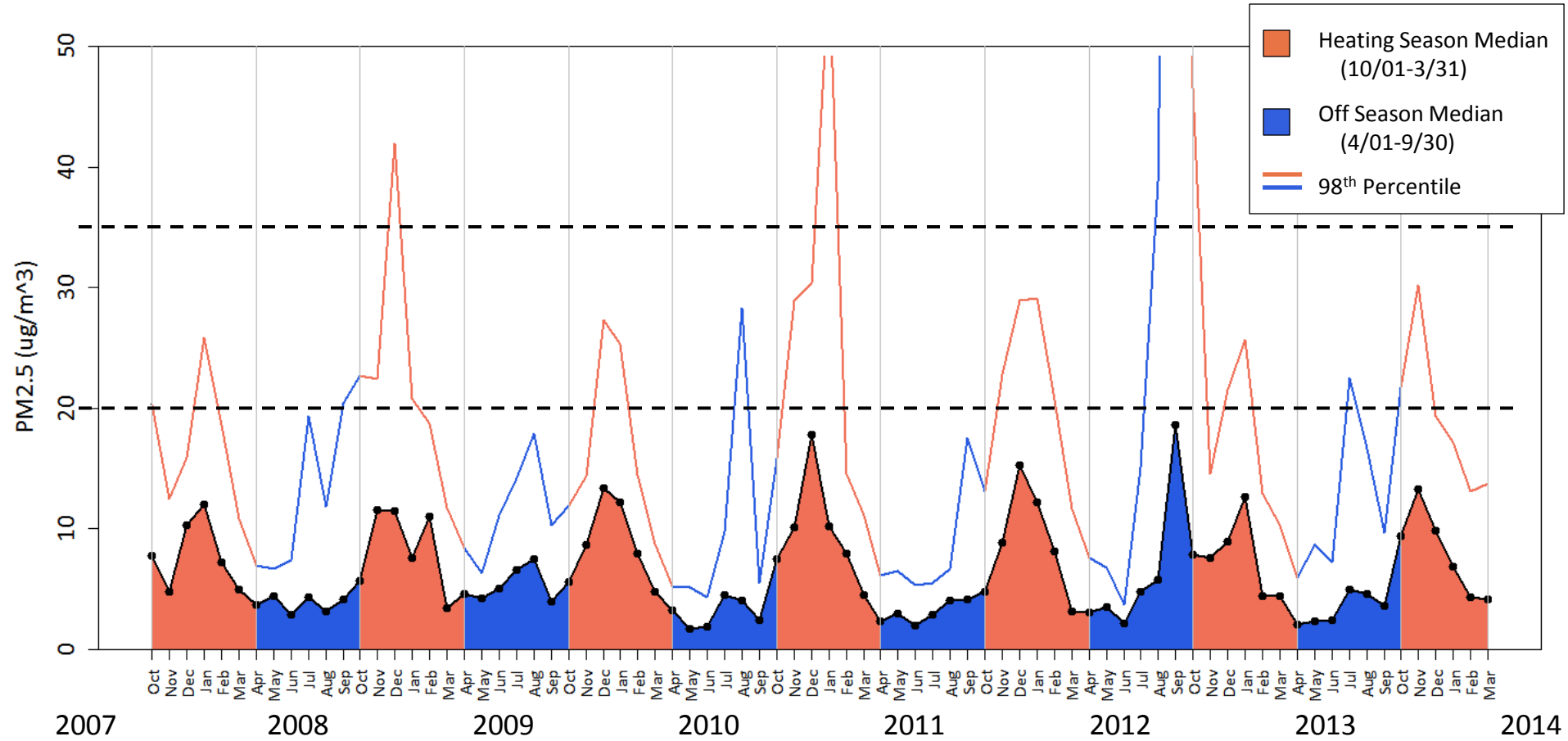


*Unhealthy for sensitive groups

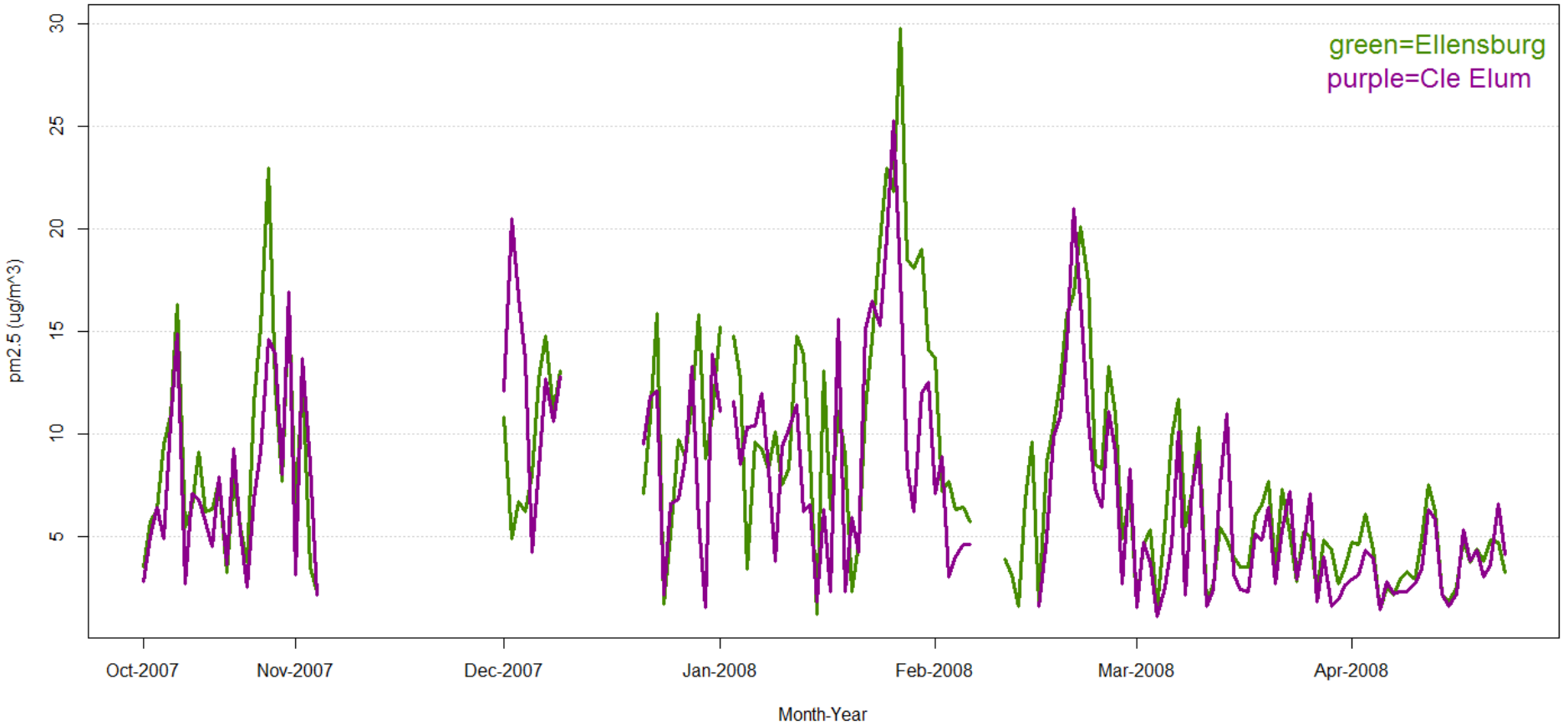
Ellensburg PM2.5 Days per Year above 20ug/m³



Ellensburg Median and 98th Percentile PM2.5 by Month and Year



Ellensburg – Cle Elum Comparison



What happens when we're sleeping?

Ellensburg and Cle Elum Median PM_{2.5} by Hour

