

Kittitas County Health Order: Stay-at-Home Renewal

According to RCW 70.05.070(3), the Health Officer will control and prevent the spread of any dangerous, contagious or infectious diseases that may occur within his jurisdiction.

An outbreak of the disease caused by 2019 Novel Coronavirus (COVID-19) especially within vulnerable populations, poses an immediate threat to public health and safety of the residents of Kittitas County and Washington State.

Kittitas County Health Officer, Dr. Mark Larson, is requiring that all residents of Kittitas County stay at home.

RCW 70.05.120(4): Any person violating any of the provisions of chapters 70.05, 70.24, and 70.46 RCW or violating or refusing or neglecting to obey any of the rules, regulations or orders made for the prevention, suppression and control of dangerous contagious and infectious diseases by the local board of health or local health officer or administrative officer or state board of health, or who shall leave any isolation hospital or quarantined house or place without the consent of the proper health officer or who evades or breaks quarantine or conceals a case of contagious or infectious disease or assists in evading or breaking any quarantine or concealing any case of contagious or infectious disease, is guilty of a misdemeanor, and upon conviction thereof shall be subject to a fine of not less than twenty-five dollars nor more than one hundred dollars or to imprisonment in the county jail not to exceed ninety days or to both fine and imprisonment.

THIS ORDER HEREBY REQUIRES:

To protect public health, the Health Officer orders all individuals living in Kittitas County to stay at home or at their place of residence except as needed to perform essential tasks or to maintain continuity of operations of the federal critical infrastructure sectors, as outlined at <https://www.cisa.gov/identifying-critical-infrastructure-during-covid-19> (see Figure 1). In addition, and in consultation with the Kittitas County Emergency Management Department, the Health Officer may order cessation of any of the aforementioned sectors if necessary or designate additional sectors as critical in order to protect the health and well-being of Kittitas County residents.

All individuals living in the County; except that individuals may leave to provide or receive certain essential services or engage in certain governmental services; exempting individuals experiencing homelessness but urging individuals experiencing homeless to find shelter and government agencies to provide it; directing all businesses and governmental agencies to cease nonessential operations at physical locations in the county; prohibiting all nonessential gatherings of any number of individuals; and cessation of non-essential travel.



The renewal of this order is effective as of Sunday, May 24, 2020, at 12:00 a.m. and shall continue in effect until Tuesday, June 2, 2020 at 11:59 p.m., unless modified or rescinded. It shall be reviewed every 10 days to determine the need to continue this order and renewed as needed.

The intent of this order is to ensure that the greatest number of people remain in the places of residence to the maximum extent feasible, while enabling essential services to continue, to slow the spread of COVID-19 as much as possible. At this stage of the emergency, it is essential to slow virus transmission as much as possible to protect the most vulnerable residents of Kittitas County and to prevent the healthcare delivery system from being overwhelmed.

When people need to leave their places or residence, whether to obtain or perform vital services, or to otherwise facilitate authorized activities necessary for basic life functions, they should at all times, as reasonably possible, comply with social distancing requirements. All provisions of this order should be interpreted to effectuate this intent. Failure to comply with any of the provisions of this order constitutes an imminent threat to public health.

To the extent individuals are using shared or outdoor spaces, they must at all times, as reasonably possible, maintain social distancing of at least six feet from any other person when they are outside their residence. Social distancing requirements are waived for household members.

All persons may leave their residences only for essential activities, essential government functions, or to operate and maintain essential businesses. However, people at high risk of severe illness from COVID-19 and people who are sick are urged to stay in their residence to the extent possible except as necessary to seek medical care.

Vacation rental businesses are not essential, except to provide lodging to support COVID-19 response, including housing healthcare workers and first responders, or for the purposes of isolation or quarantine of individuals residing in Kittitas County.

For the purposes of this order, individuals may leave their residence to perform essential activities, including tasks essential to their health and safety, or to the health and safety of their family or household members (including, but not limited to, pets), such as, by way of example only and without limitation, obtaining medical supplies or medication, visiting a healthcare professional, or obtaining supplies they need to work from home.

Essential activities include those necessary to obtain vital services or supplies for themselves and their family or household members, or to deliver those services or supplies to others, such as, by way of example only with without limitation, canned food, dry goods, fresh fruits and vegetables, pet supply, fresh meats, fish, and poultry, and any other household consumer products, and products necessary to maintain the safety, sanitation, and essential operation of residences.

In addition, essential activities can include outdoor activity, such as, by way of example and without limitation, walking, hiking, running, bicycling, swimming, and camping (household members only), provided the individuals comply with social distancing requirements.



Other essential activities may include caring for a family member or pet in another household and perform work providing essential products and services.

For the purposes of this order, individuals may leave their residence to work for or obtain services at any healthcare operation, including but not limited to hospitals, clinics, pharmacies, healthcare suppliers, home healthcare services, behavioral health providers, and veterinary care. Fitness and exercise gyms and similar facilities are NOT healthcare operations.

For the purposes of this order, individuals may leave their residence to provide any services or perform any work necessary to the operations and maintenance of essential infrastructure, including but not limited to water, sewer, gas, electrical, roads and highways, solid waste collection and removal, public transportation, internet and critical network access, and telecommunications systems.

For the purpose of this order, all first responders, emergency management personnel, emergency dispatchers, court personnel, law enforcement personnel, and certain public health personnel, and others who need to perform essential services are categorically exempt from this order.

Essential businesses may also include grocery stores, farmers markets, farm and produce stands, supermarkets, food banks, convenience stores, other establishments engaged in the retail sale of food stuffs, food cultivation such as farming and livestock, laundry service providers, restaurants and other facilities that prepare and serve food for delivery or carry out, businesses that provide social services such as shelter or other necessities of life for economically disadvantaged or otherwise needy individuals, media and news services, gas stations, auto-supply or repair and related services, banks and related financial institutions, hardware stores, plumbers, electricians, exterminators, and other services necessary for the maintenance of sanitation or safety for operation of residences.

Other essential businesses may also include the following: those providing mailing and shipping services, including post office boxes; home based care for seniors, adults, or children; residential facilities and shelters for seniors, adults, or children; professional services such as legal or accounting services, when necessary to assist in compliance with legally-mandated activities; childcare facilities providing services that enable employees exempted in this order to work as permitted; on-going construction (meaning construction that actually commenced, and was not just permitted, prior to the effective date of this order) following industry safety guidelines developed in conjunction with Governor Inslee AND approved April 24, 2020 in his amendment to the Stay Home, Stay Health Order for Washington state residents (See Figure 2. Phase 1 Construction Restart COVID-19 Job Site Requirements).

For businesses subject to environmental health regulations, inspections of such business establishments will continue to ensure compliance with this order and other applicable regulations.

All Kittitas County businesses, regardless of essential or nonessential designation, must prepare safety protocols for the protection of employees and the public they serve. These plans should take into consideration physical distancing requirements, limiting customer capacity, altering business practices to include delivery or pickup, cleaning and disinfection protocols, and the use of personal protective





To Protect and Promote the Health and the Environment of the People of Kittitas County

equipment (PPE) as necessary. These plans are intended to prepare businesses and organizations to resume at the earliest allowable date while decreasing community transmission of COVID-19, as well as the possibility of clusters specific to any one business or organization that could be detrimental to the success of that agency.

All travel, including but not limited to travel by foot, bicycle, scooter, motorcycle, automobile, or public transit is prohibited, except as means to travel to and from work to operate essential businesses or maintain essential government services.

All public and private gatherings of any number of people occurring outside a household or living unit are prohibited, except for the limited purposes, as previously described in this order, of performing essential tasks or do essential work.

All residents of Kittitas County shall assist and comply with directives until further notice. Kittitas County residents will be notified of this order via press release, public notice, social media, and the emergency alert system utilized by Kittitas County Emergency Management Department.

Any aggrieved person can petition the Kittitas County Superior Court for release from this Health Order. This Health Order shall become final unless, no later than ten (10) days after the Health Order is served, any person aggrieved by the order requests in writing an appeal before the Board of Health according to Kittitas County Code Chapter 13.75.070.



Dr. Mark Larson
Health Officer



Tristen Lamb
Public Health Director

5/22/20
Date



Figure 1. Critical Infrastructure Workers

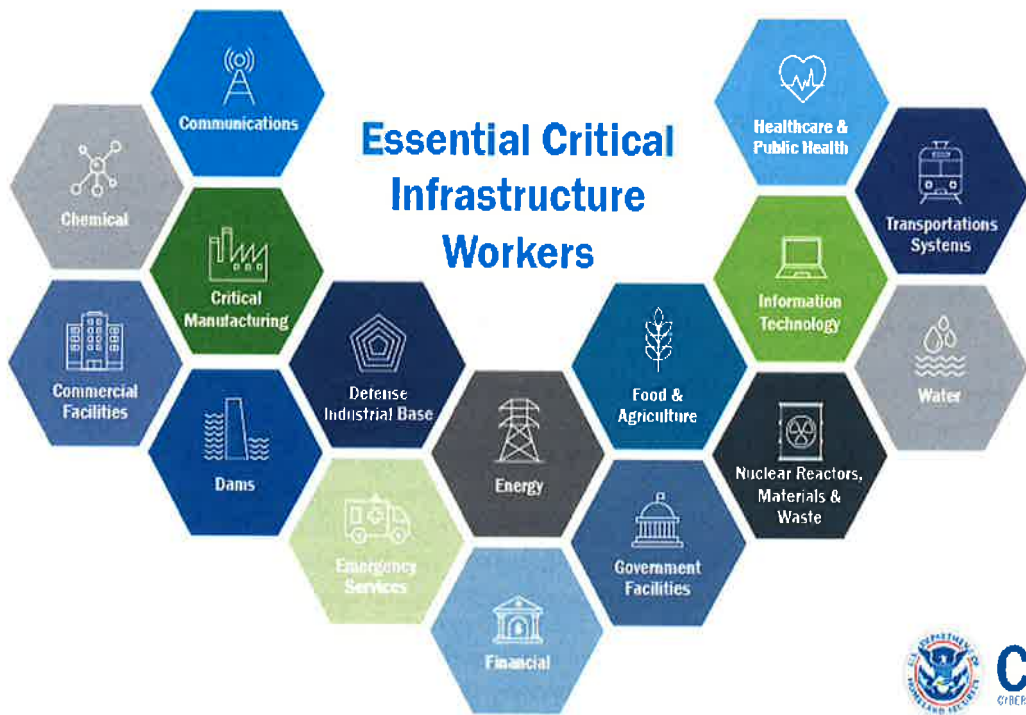


Figure 2. Phase 1 Construction Restart COVID-19 Job Site Requirements

Phase 1 Construction Restart COVID-19 Job Site Requirements

Phase 1: Low-risk construction work resumes.

Any existing construction projects complying with the points below may resume only those work activities that do not require workers to be closer than six-feet together. If a work activity requires workers to be closer than six-feet, it is not considered low-risk and is not authorized. Adherence to the physical distancing requirement and the health and safety points below will be strictly enforced.

Prior to recommencing work all contractors are required to develop and post at each job site a comprehensive COVID-19 exposure control, mitigation, and recovery plan. The plan must include policies regarding the following control measures: PPE utilization; on-site social distancing; hygiene; sanitation; symptom monitoring; incident reporting; site decontamination procedures; COVID-19 safety training; exposure response procedures; and a post-exposure incident project wide recovery plan. A copy of the plan must be available on each job site during any construction activities and available for inspection by state and local authorities. Failure to meet posting requirements will result in sanctions, including the job being shut down.

All Contractors are required to post at each job site written notice to employees, subcontractors and government officials the Phase 1 work that will be performed at that job site and signed commitment to adhere to the requirements listed in this document.

All contractors have a general obligation to keep a safe and healthy worksite in accordance with state and federal law. Failure to follow these requirements will be considered a violation of these duties and be penalized accordingly. Under RCW 49.17.060, "each employer shall furnish to each of their employees a place of employment free from recognized hazards that are causing or likely to cause serious injury or death to his or her employees and shall comply with the rules, regulations, and orders promulgated under this chapter." The Washington State Department of Labor & Industries' Division of Occupational Safety and Health (DOSH) is responsible for workplace safety and health, including inspections and enforcement, consultation, technical assistance, training, education and grants.

All contractors are also required to comply with the following COVID-19 worksite-specific safety practices, as outlined in Gov. Jay Inslee's "Stay Home, Stay Healthy" Proclamation 20-25, and in accordance with the Washington State Department of Labor & Industries General Coronavirus Prevention Under Stay Home-Stay Healthy Order (DOSH Directive 1.70: <https://www.lni.wa.gov/safety-health/safety-rules/enforcement-policies/DD170.pdf>) and the Washington State Department of Health Workplace and Employer Resources & Recommendations at <https://www.doh.wa.gov/Coronavirus/workplace>:



COVID-19 Site Supervisor

1. A site-specific COVID-19 Supervisor shall be designated by the contractor at every job site to monitor the health of employees and enforce the COVID-19 job site safety plan. A designated COVID-19 Supervisor must be present at all times during construction activities, except on single-family residential job sites with 6 or fewer people on the site.

COVID-19 Safety Training

2. A Safety Stand-Down/toolbox talk/tailgate training must be conducted on all job sites on the first day of returning to work, and weekly thereafter, to explain the protective measures in place for all workers. Social distancing must be maintained at all gatherings.
3. Attendance will be communicated verbally and the trainer will sign in each attendee.
4. COVID-19 safety requirements shall be visibly posted on each jobsite.

Social Distancing

5. Social distancing of at least 6 feet of separation must be maintained by every person on the worksite at all times.
6. Gatherings of any size must be precluded by taking breaks and lunch in shifts. Any time two or more persons must meet, ensure minimum 6 feet of separation.
7. Identify "choke points" and "high-risk areas" on job sites where workers typically congregate and control them so social distancing is always maintained.
8. Minimize interactions when picking up or delivering equipment or materials, ensure minimum 6-foot separation.
9. To the extent practical allow only one trade/subcontractor at a time on a jobsite and maintain 6-foot separation social distancing for each member of that trade. If more than one trade/subcontractor must be on the job to complete the job then at a minimum all trades and subcontractors must maintain social distancing policies in accordance with this guidance.

Personal Protective Equipment (PPE) – Employer Provided

10. Provide personal protective equipment (PPE) such as gloves, goggles, face shields and face masks as appropriate, or required, for the activity being performed.
11. Masks, in accordance with Washington Department of Health guidelines, or as required by Washington Department of Labor & Industries (L&I) safety rules, must be worn at all times by every employee on the worksite.
12. Eye protection must be worn at all times by every employee while on worksite.
13. Gloves must be worn at all times by every employee while on worksite. The type of glove worn should be appropriate to the task. If gloves are not typically required for the task, then any type of glove is acceptable, including latex gloves.
14. If appropriate PPE cannot be provided, the worksite must be shut down.



Sanitation and Cleanliness

15. Soap and running water shall be abundantly provided on all job sites for frequent handwashing. Workers should be encouraged to leave their workstations to wash their hands regularly, before and after going to the bathroom, before and after eating and after coughing, sneezing or blowing their nose.
16. When running water is not available, portable washing stations, with soap, are required, per WAC 296-155-140 2(a) – (f). Alcohol-based hand sanitizers with greater than 60% ethanol or 70% isopropanol can also be used, but are not a replacement for the water requirement.
17. Post, in areas visible to all workers, required hygienic practices, including not to touch face with unwashed hands or with gloves; washing hands often with soap and water for at least 20 seconds; use hand sanitizer with at least 60% alcohol; cleaning and disinfecting frequently touched objects and surfaces such as workstations, keyboards, telephones, handrails, machines, shared tools, elevator control buttons, and doorknobs; covering the mouth and nose when coughing or sneezing as well as other hygienic recommendations by the U.S. Centers for Disease Control (CDC).
18. Make disinfectants available to workers throughout the worksite and ensure cleaning supplies are frequently replenished.
19. Frequently clean and disinfect high-touch surfaces on job sites and in offices, such as shared tools, machines, vehicles and other equipment, handrails, doorknobs, and portable toilets. If these areas cannot be cleaned and disinfected frequently, the jobsite shall be shut down until such measures can be achieved and maintained.
20. When the worksite is an occupied home, workers should sanitize work areas upon arrival, throughout the workday and immediately before they leave, and occupants should keep a personal distance of at least 10 feet.
21. If an employee reports feeling sick and goes home, the area where that person worked should be immediately disinfected.

Employee Health/Symptoms

22. Create policies which encourage workers to stay home or leave the worksite when feeling sick or when they have been in close contact with a confirmed positive case. If they develop symptoms of acute respiratory illness, they must seek medical attention and inform their employer.
23. Have employees inform their supervisors if they have a sick family member at home with COVID-19. If an employee has a family member sick with COVID-19, that employee must follow the isolation/quarantine requirements as established by the State Department of Health.
24. Screen all workers at the beginning of their shift by taking their temperature and asking them if they have a fever, cough, shortness of breath, fatigue, muscle aches, or new loss of taste or smell. Thermometers used shall be 'no touch' or 'no contact' to the greatest extent possible. If a 'no touch' or 'no contact' thermometer is not available, the thermometer must be properly sanitized between each use. Any worker with a temperature of 100.4°F or higher is considered to have a fever and must be sent home.



25. Instruct workers to report to their supervisor if they develop symptoms of COVID-19 (e.g., fever, cough, shortness of breath, fatigue, muscle aches, or new loss of taste or smell). If symptoms develop during a shift, the worker should be immediately sent home. If symptoms develop while the worker is not working, the worker should not return to work until they have been evaluated by a healthcare provider.
26. Failure of employees to comply will result in employees being sent home during the emergency actions.
27. Employees who do not believe it is safe to work shall be allowed to remove themselves from the worksite and employers must follow the expanded family and medical leave requirements included in the Families First Coronavirus Response Act or allow the worker to use unemployment benefits, paid time off, or any other available form of paid leave available to the worker at the workers discretion.
28. Any worker coming to work on a construction site in Washington from any state that is not contiguous to Washington must self-quarantine for 14 days to become eligible to work on a job site in Washington.
29. If an employee is confirmed to have COVID-19 infection, employers should inform fellow employees of their possible exposure to COVID-19 in the workplace but maintain confidentiality as required by the Americans with Disabilities Act (ADA). The employer should instruct fellow employees about how to proceed based on the CDC [Public Health Recommendations for Community-Related Exposure](#).

Job Site Visitors

30. A daily attendance log of all workers and visitors must be kept and retained for at least four weeks. The log must include the name, phone number, and email address of all workers and visitors.

No jobsite may operate until the contractor can meet and maintain all requirements, including providing materials, schedules and equipment required to comply.

These Phase 1 COVID-19 job site safety practices are required as long as the "Stay Home, Stay Healthy" Gubernatorial Proclamation 20-25 is in effect or if adopted as rules by a federal, state or local regulatory agency. All items minus numbers 28 and 30 are subject to enforcement action under L&I's Division of Occupational Safety and Health (DOSH).

Workplace safety and health complaints may be submitted to the L&I Call Center: (1-800-423-7233) or via e-mail to adag235@lni.wa.gov. General questions about how to comply with construction safety practices can be submitted to the state's Business Response Center at <https://app.smartsheet.com/b/form/2562f1caf5814c46a6bf163762263aa5>. All other violations related to Proclamation 20-25 can be submitted via at: <https://bit.ly/covid-compliance>.



