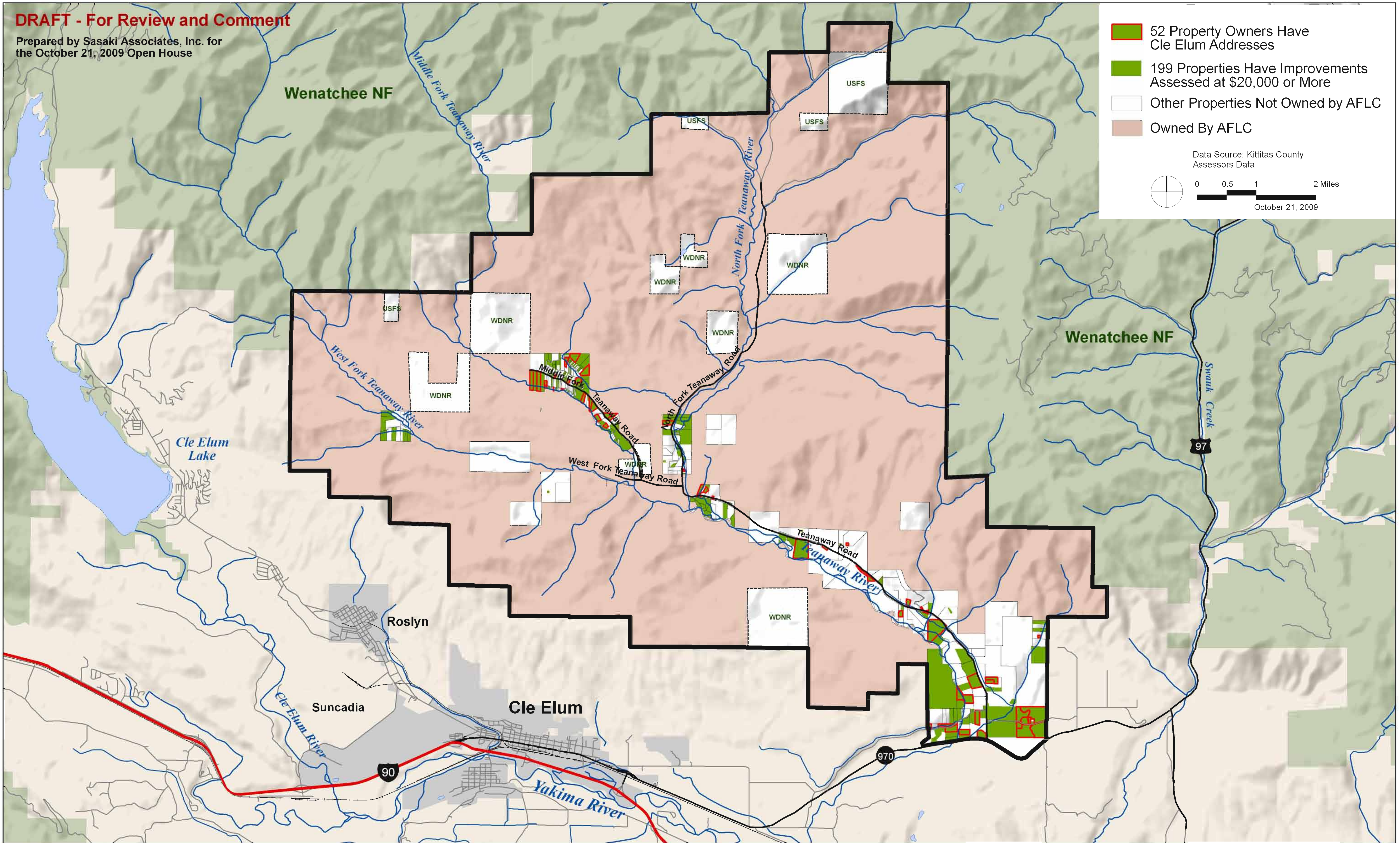


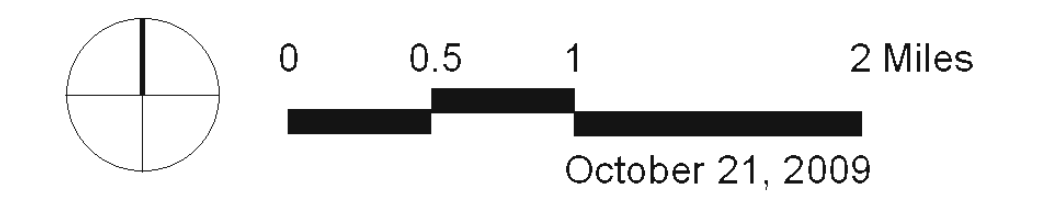
DRAFT - For Review and Comment

Prepared by Sasaki Associates, Inc. for
the October 21, 2009 Open House



- 52 Property Owners Have Cle Elum Addresses
- 199 Properties Have Improvements Assessed at \$20,000 or More
- Other Properties Not Owned by AFLC
- Owned By AFLC

Data Source: Kittitas County Assessors Data



**Initial Data Collection from
Tax Assessor Records**

Upper Teanaway
Subarea

