

Appendix A:
Proposed Shoreline
Environment Designations
(SED)

Map 24
Kittitas County Regional SMP Update
SMA Grant #: G1200054

- Minimum Shoreline Planning Extent
- City Limits

Shoreline Environment Designations
(SED)

- Minimum Shoreline Jurisdiction
- Aquatic
 - High Intensity
 - Natural
 - Shoreline Residential
 - Urban Conservancy
 - Rural Conservancy

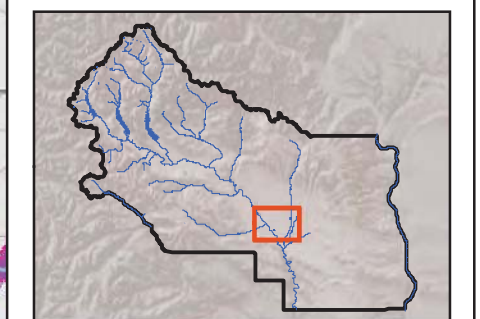
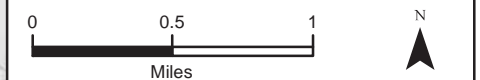
Extended Shoreline Jurisdiction
(Optional)

- Aquatic
- High Intensity
- Natural
- Shoreline Residential
- Urban Conservancy
- Rural Conservancy

Note: Areas waterward of the Ordinary High Water Line are designated Aquatic.

The final shoreline jurisdiction area will be determined in the shoreline planning process, but will include at least the minimum shoreline jurisdiction and possibly areas extending out from the minimum jurisdiction, such as the 100-year floodplain (shown in lighter shading outside the minimum jurisdiction).

Map data shown here are property of the listed sources. Inaccuracies may exist, and ESA implies no warranties or guarantees regarding any aspect of data depiction.



Modeling studies by USGS (2003) show that the lower approximately 1.5 miles of Cooke Creek and lower approximately 6.0 miles of Coleman Creek are shorelines of the state. However, flow measurements collected by KCCD between 2001 and 2008 suggest that the mean annual flow for these streams may be less than 20 cfs, which means these stream segments, or portions of them, might not be shorelines of the state. In addition, KCCD has identified an error in the stream mapping that was utilized by the USGS modeling study for the Cooke Creek watershed. Further review of the USGS study, stream flow data and consultation with Ecology is necessary before making a final shoreline jurisdictional determination.

