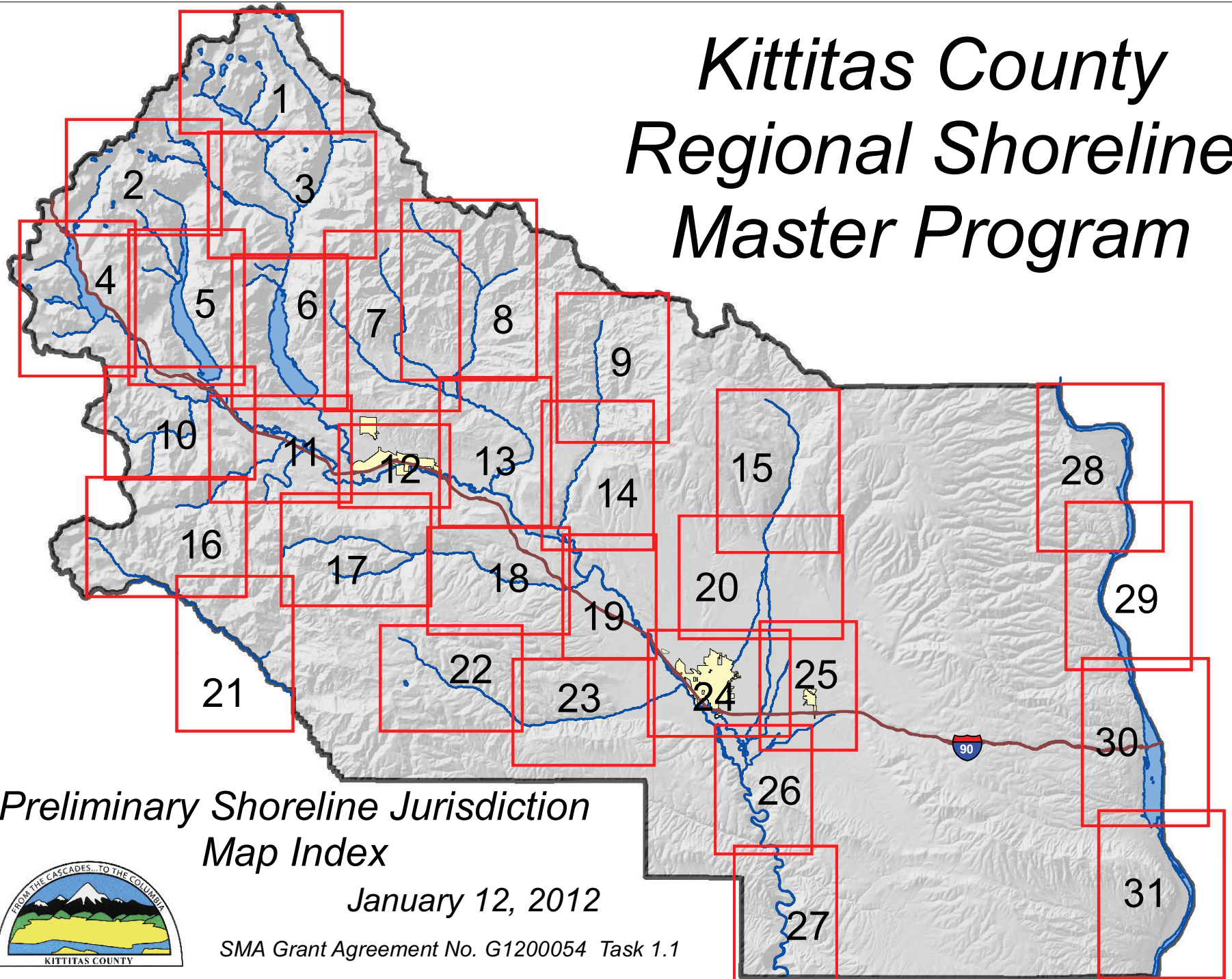


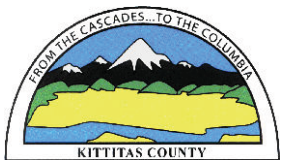
Kittitas County Regional Shoreline Master Program

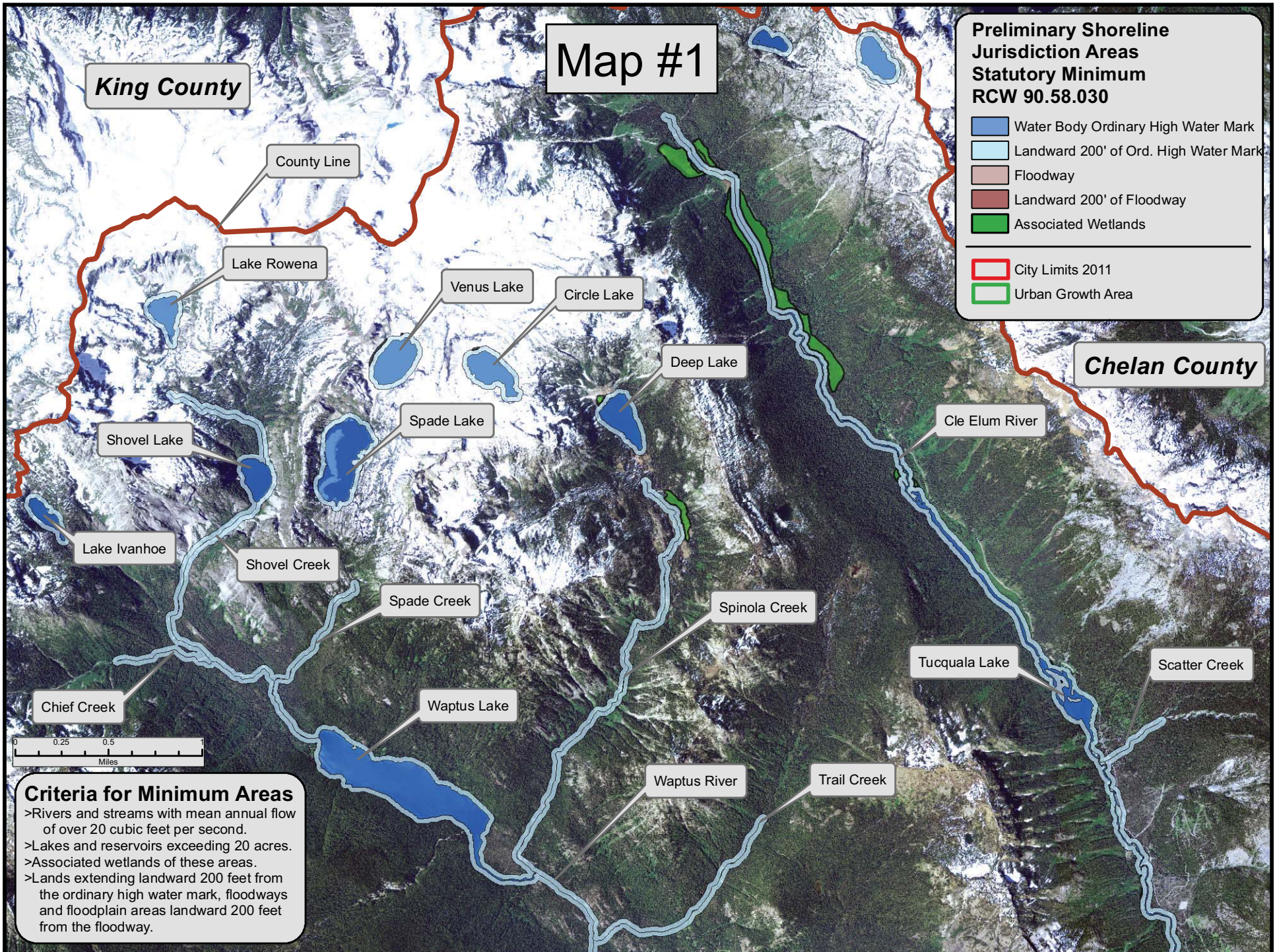


*Preliminary Shoreline Jurisdiction
Map Index*

January 12, 2012

SMA Grant Agreement No. G1200054 Task 1.1





Shoreline jurisdiction boundaries depicted on this map are approximate. They have not been formally delineated or surveyed and are intended for planning purposes only. Additional site-specific evaluation may be needed to confirm or verify the information shown on this map.





Shoreline jurisdiction boundaries depicted on this map are approximate. They have not been formally delineated or surveyed and are intended for planning purposes only. Additional site-specific evaluation may be needed to confirm or verify the information shown on this map.

Map #3

Preliminary Shoreline Jurisdiction Areas Statutory Minimum RCW 90.58.030

-  Water Body Ordinary High Water Mark
-  Landward 200' of Ord. High Water Mark
-  Floodway
-  Landward 200' of Floodway
-  Associated Wetlands

-  City Limits 2011
-  Urban Growth Area

Goat Creek

Fortune Creek

Michael Lake

Cle Elum River

Waptus River

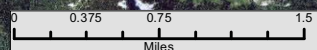
Cooper Lake

Cooper River

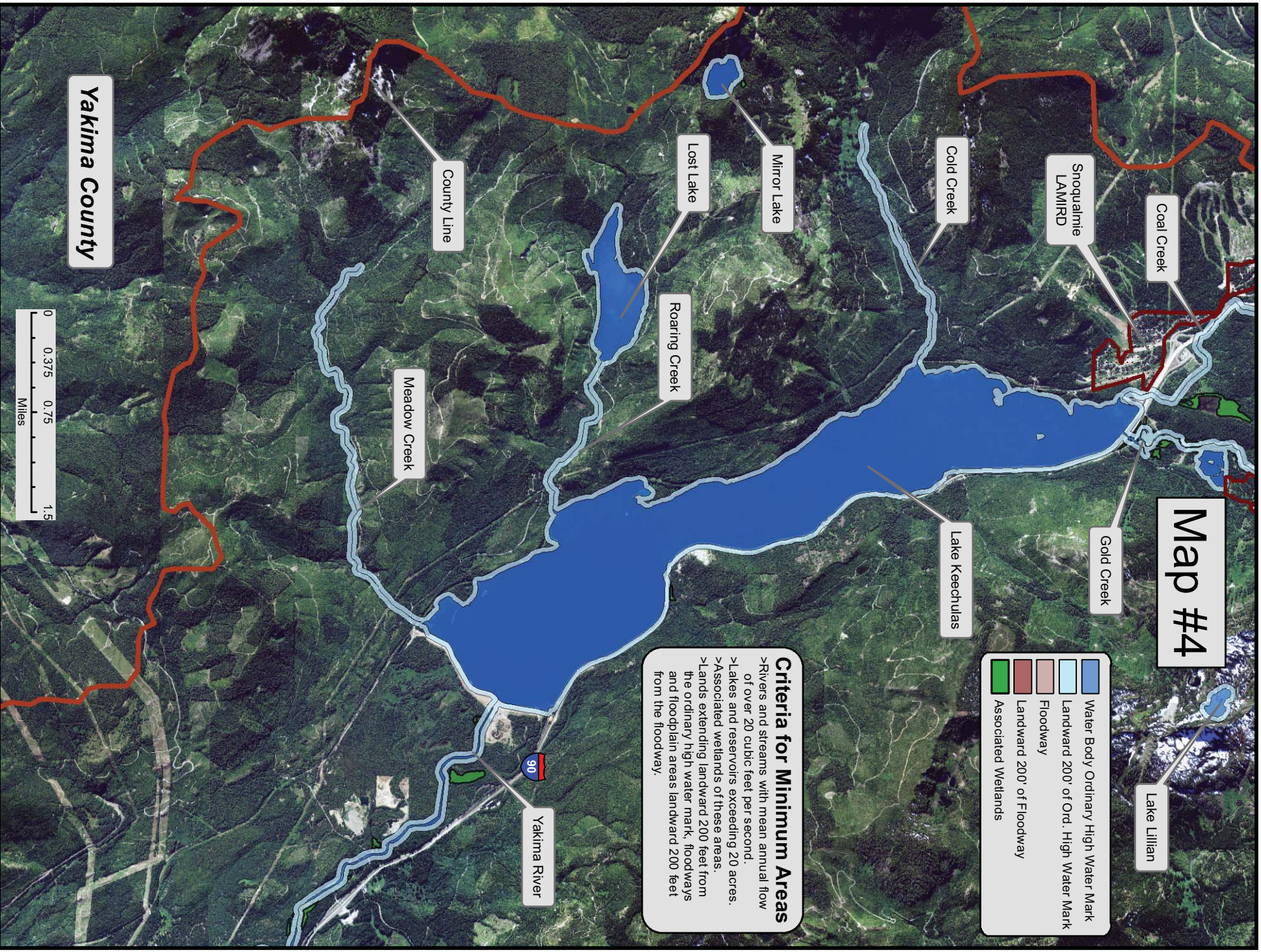
Cle Elum River

Criteria for Minimum Areas

- >Rivers and streams with mean annual flow of over 20 cubic feet per second.
- >Lakes and reservoirs exceeding 20 acres.
- >Associated wetlands of these areas.
- >Lands extending landward 200 feet from the ordinary high water mark, floodways and floodplain areas landward 200 feet from the floodway.



Shoreline jurisdiction boundaries depicted on this map are approximate. They have not been formally delineated or surveyed and are intended for planning purposes only. Additional site-specific evaluation may be needed to confirm or verify the information shown on this map.



Shoreline jurisdiction boundaries depicted on this map are approximate. They have not been formally delineated or surveyed and are intended for planning purposes only. Additional site-specific evaluation may be needed to confirm or verify the information shown on this map.

Map #5

**Preliminary Shoreline
Jurisdiction Areas
Statutory Minimum
RCW 90.58.030**

- Water Body Ordinary High Water Mark
- Landward 200' of Ord. High Water Mark
- Floodway
- Landward 200' of Floodway
- Associated Wetlands
- City Limits 2011
- Urban Growth Area



Criteria for Minimum Areas

- >Rivers and streams with mean annual flow of over 20 cubic feet per second.
- >Lakes and reservoirs exceeding 20 acres.
- >Associated wetlands of these areas.
- >Lands extending landward 200 feet from the ordinary high water mark, floodways and floodplain areas landward 200 feet from the floodway.

Box Canyon Creek

Gale Creek

Lake Kachess

Yakima River

90

ROSLYN (WATERSHED)

Shoreline jurisdiction boundaries depicted on this map are approximate. They have not been formally delineated or surveyed and are intended for planning purposes only. Additional site-specific evaluation may be needed to confirm or verify the information shown on this map.

Map #6

French Cabin Creek

Thorp Creek

Cle Elum River

Lake Cle Elum

Teanaway River
West Fork

Cle Elum River

ROSLYN (WATERSHED)

Criteria for Minimum Areas

- >Rivers and streams with mean annual flow of over 20 cubic feet per second.
- >Lakes and reservoirs exceeding 20 acres.
- >Associated wetlands of these areas.
- >Lands extending landward 200 feet from the ordinary high water mark, floodways and floodplain areas landward 200 feet from the floodway.

Preliminary Shoreline Jurisdiction Areas Statutory Minimum RCW 90.58.030

- Water Body Ordinary High Water Mark
- Landward 200' of Ord. High Water Mark
- Floodway
- Landward 200' of Floodway
- Associated Wetlands

- City Limits 2011
- Urban Growth Area



Shoreline jurisdiction boundaries depicted on this map are approximate. They have not been formally delineated or surveyed and are intended for planning purposes only. Additional site-specific evaluation may be needed to confirm or verify the information shown on this map.

Map #7

Teanaway River
North Fork

Teanaway River

Teanaway River
West Fork

Preliminary Shoreline Jurisdiction Areas Statutory Minimum RCW 90.58.030

- Water Body Ordinary High Water Mark
- Landward 200' of Ord. High Water Mark
- Floodway
- Landward 200' of Floodway
- Associated Wetlands
- City Limits 2011
- Urban Growth Area

Criteria for Minimum Areas

- > Rivers and streams with mean annual flow of over 20 cubic feet per second.
- > Lakes and reservoirs exceeding 20 acres.
- > Associated wetlands of these areas.
- > Lands extending landward 200 feet from the ordinary high water mark, floodways and floodplain areas landward 200 feet from the floodway.



Shoreline jurisdiction boundaries depicted on this map are approximate. They have not been formally delineated or surveyed and are intended for planning purposes only. Additional site-specific evaluation may be needed to confirm or verify the information shown on this map.

Map #8

County Line





Teanaway River
North Fork

Stafford Creek

Teanaway River



Preliminary Shoreline Jurisdiction Areas Statutory Minimum RCW 90.58.030

	Water Body Ordinary High Water Mark
	Landward 200' of Ord. High Water Mark
	Floodway
	Landward 200' of Floodway
	Associated Wetlands
	City Limits 2011
	Urban Growth Area

Criteria for Minimum Areas

- >Rivers and streams with mean annual flow of over 20 cubic feet per second.
- >Lakes and reservoirs exceeding 20 acres.
- >Associated wetlands of these areas.
- >Lands extending landward 200 feet from the ordinary high water mark, floodways and floodplain areas landward 200 feet from the floodway.

Shoreline jurisdiction boundaries depicted on this map are approximate. They have not been formally delineated or surveyed and are intended for planning purposes only. Additional site-specific evaluation may be needed to confirm or verify the information shown on this map.

Map #9

**Preliminary Shoreline
Jurisdiction Areas
Statutory Minimum
RCW 90.58.030**

- Water Body Ordinary High Water Mark
- Landward 200' of Ord. High Water Mark
- Floodway
- Landward 200' of Floodway
- Associated Wetlands

- City Limits 2011
- Urban Growth Area

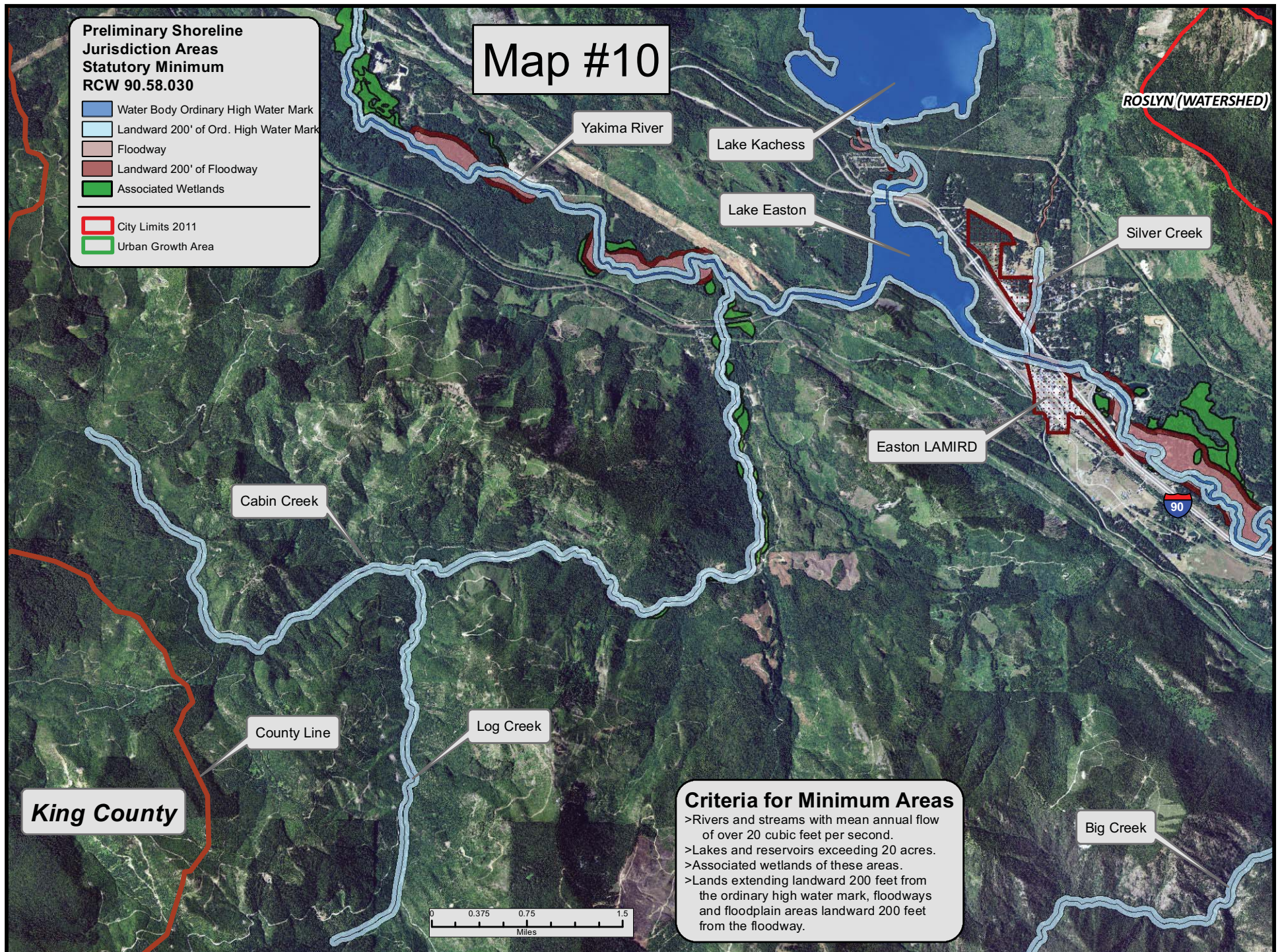
Swauk Creek

Criteria for Minimum Areas

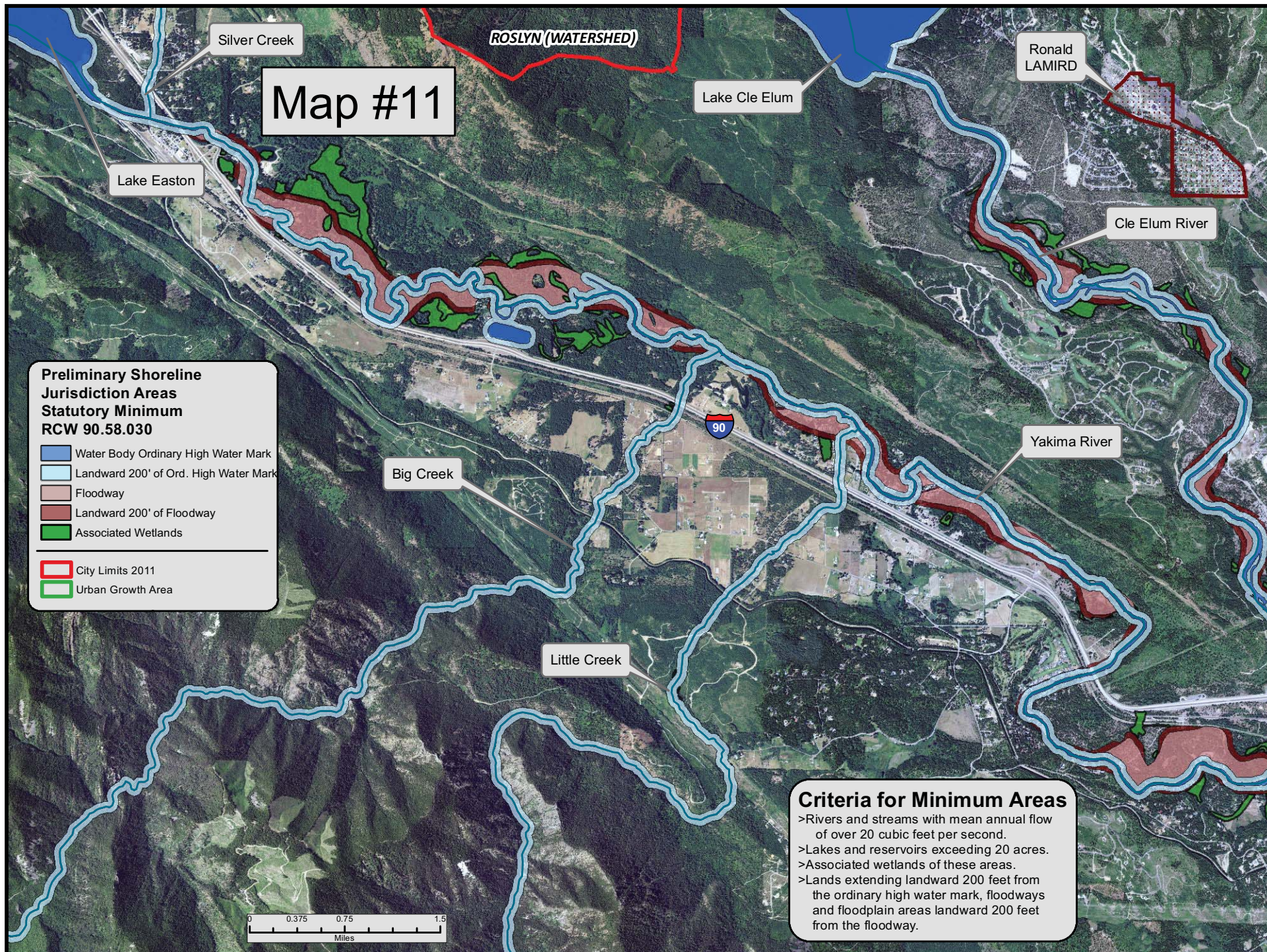
- >Rivers and streams with mean annual flow of over 20 cubic feet per second.
- >Lakes and reservoirs exceeding 20 acres.
- >Associated wetlands of these areas.
- >Lands extending landward 200 feet from the ordinary high water mark, floodways and floodplain areas landward 200 feet from the floodway.



Shoreline jurisdiction boundaries depicted on this map are approximate. They have not been formally delineated or surveyed and are intended for planning purposes only. Additional site-specific evaluation may be needed to confirm or verify the information shown on this map.



Shoreline jurisdiction boundaries depicted on this map are approximate. They have not been formally delineated or surveyed and are intended for planning purposes only. Additional site-specific evaluation may be needed to confirm or verify the information shown on this map.



Shoreline jurisdiction boundaries depicted on this map are approximate. They have not been formally delineated or surveyed and are intended for planning purposes only. Additional site-specific evaluation may be needed to confirm or verify the information shown on this map.

Map #12

Preliminary Shoreline Jurisdiction Areas Statutory Minimum RCW 90.58.030

- Water Body Ordinary High Water Mark
- Landward 200' of Ord. High Water Mark
- Floodway
- Landward 200' of Floodway
- Associated Wetlands
- City Limits 2011
- Urban Growth Area

Cle Elum River

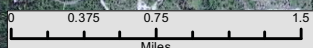
CLE ELUM

SOUTH CLE ELUM

Yakima River

Criteria for Minimum Areas

- >Rivers and streams with mean annual flow of over 20 cubic feet per second.
- >Lakes and reservoirs exceeding 20 acres.
- >Associated wetlands of these areas.
- >Lands extending landward 200 feet from the ordinary high water mark, floodways and floodplain areas landward 200 feet from the floodway.



Shoreline jurisdiction boundaries depicted on this map are approximate. They have not been formally delineated or surveyed and are intended for planning purposes only. Additional site-specific evaluation may be needed to confirm or verify the information shown on this map.

Map #13

Teamaway River
North Fork

Preliminary Shoreline Jurisdiction Areas Statutory Minimum RCW 90.58.030

- Water Body Ordinary High Water Mark
- Landward 200' of Ord. High Water Mark
- Floodway
- Landward 200' of Floodway
- Associated Wetlands
- City Limits 2011
- Urban Growth Area

Teamaway River

Yakima River

Criteria for Minimum Areas

- > Rivers and streams with mean annual flow of over 20 cubic feet per second.
- > Lakes and reservoirs exceeding 20 acres.
- > Associated wetlands of these areas.
- > Lands extending landward 200 feet from the ordinary high water mark, floodways and floodplain areas landward 200 feet from the floodway.



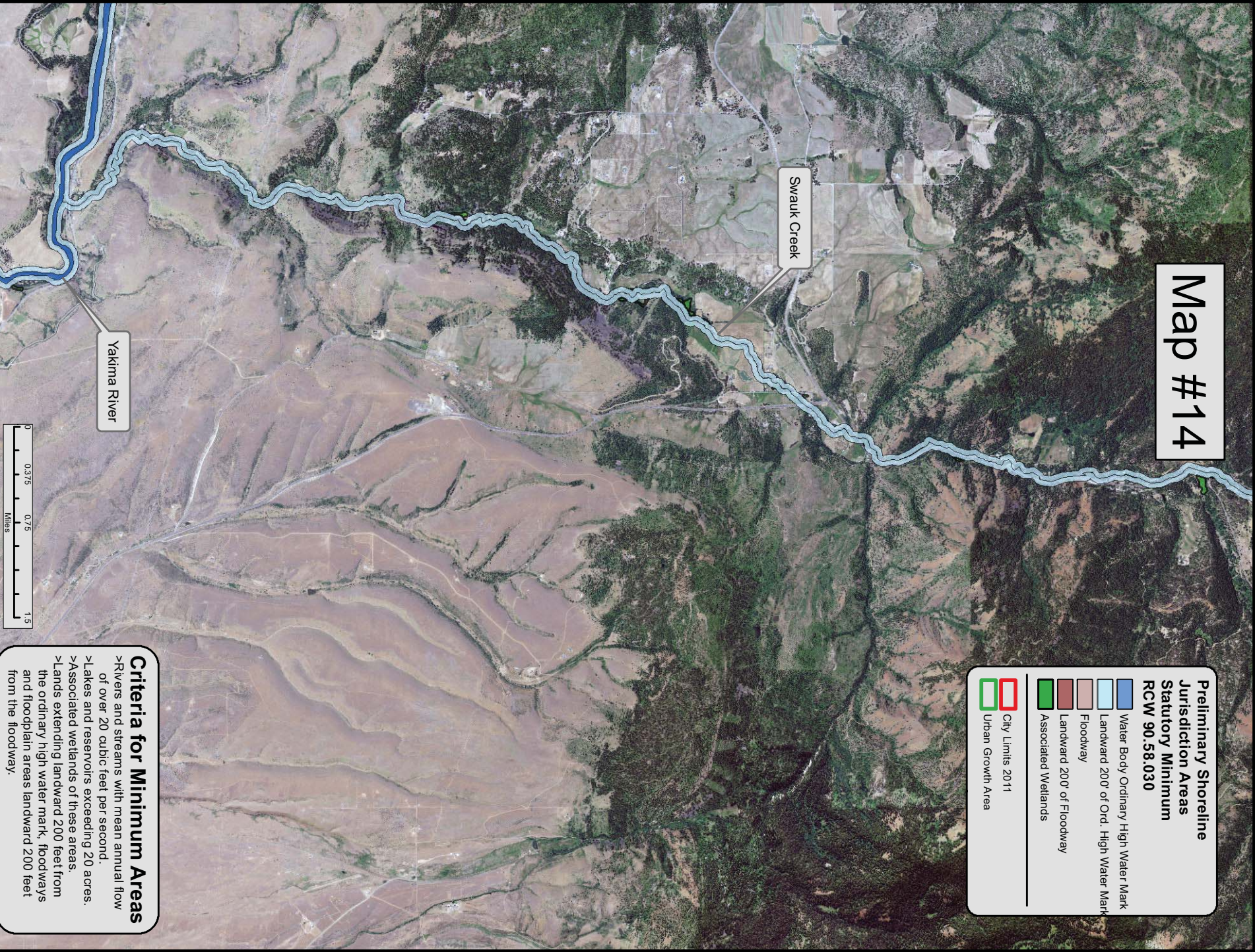
Shoreline jurisdiction boundaries depicted on this map are approximate. They have not been formally delineated or surveyed and are intended for planning purposes only. Additional site-specific evaluation may be needed to confirm or verify the information shown on this map.

Map #14

Preliminary Shoreline Jurisdiction Areas Statutory Minimum RCW 90.58.030

- Water Body Ordinary High Water Mark
- Landward 200' of Ord. High Water Mark
- Floodway
- Landward 200' of Floodway
- Associated Wetlands

- City Limits 2011
- Urban Growth Area



Criteria for Minimum Areas

- >Rivers and streams with mean annual flow of over 20 cubic feet per second.
- >Lakes and reservoirs exceeding 20 acres.
- >Associated wetlands of these areas.
- >Lands extending landward 200 feet from the ordinary high water mark, floodways and floodplain areas landward 200 feet from the floodway.

Shoreline jurisdiction boundaries depicted on this map are approximate. They have not been formally delineated or surveyed and are intended for planning purposes only. Additional site-specific evaluation may be needed to confirm or verify the information shown on this map.

Map #15

Naneum Creek

**Preliminary Shoreline
Jurisdiction Areas
Statutory Minimum
RCW 90.58.030**

- Water Body Ordinary High Water Mark
- Landward 200' of Ord. High Water Mark
- Floodway
- Landward 200' of Floodway
- Associated Wetlands

- City Limits 2011
- Urban Growth Area



Criteria for Minimum Areas

- > Rivers and streams with mean annual flow of over 20 cubic feet per second.
- > Lakes and reservoirs exceeding 20 acres.
- > Associated wetlands of these areas.
- > Lands extending landward 200 feet from the ordinary high water mark, floodways and floodplain areas landward 200 feet from the floodway.

Shoreline jurisdiction boundaries depicted on this map are approximate. They have not been formally delineated or surveyed and are intended for planning purposes only. Additional site-specific evaluation may be needed to confirm or verify the information shown on this map.

Map #16

King County

Big Creek

Little Naches River

County Line; Washington State RCW describes the River as the border between Kittitas and Yakima counties.

Yakima County

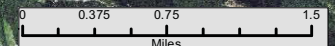
Preliminary Shoreline Jurisdiction Areas Statutory Minimum RCW 90.58.030

- Water Body Ordinary High Water Mark
- Landward 200' of Ord. High Water Mark
- Floodway
- Landward 200' of Floodway
- Associated Wetlands

- City Limits 2011
- Urban Growth Area

Criteria for Minimum Areas

- >Rivers and streams with mean annual flow of over 20 cubic feet per second.
- >Lakes and reservoirs exceeding 20 acres.
- >Associated wetlands of these areas.
- >Lands extending landward 200 feet from the ordinary high water mark, floodways and floodplain areas landward 200 feet from the floodway.



Shoreline jurisdiction boundaries depicted on this map are approximate. They have not been formally delineated or surveyed and are intended for planning purposes only. Additional site-specific evaluation may be needed to confirm or verify the information shown on this map.

Map #17

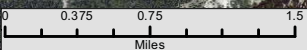
Taneum Creek
North Fork

Taneum Creek
South Fork

Preliminary Shoreline Jurisdiction Areas Statutory Minimum RCW 90.58.030

- Water Body Ordinary High Water Mark
- Landward 200' of Ord. High Water Mark
- Floodway
- Landward 200' of Floodway
- Associated Wetlands

- City Limits 2011
- Urban Growth Area

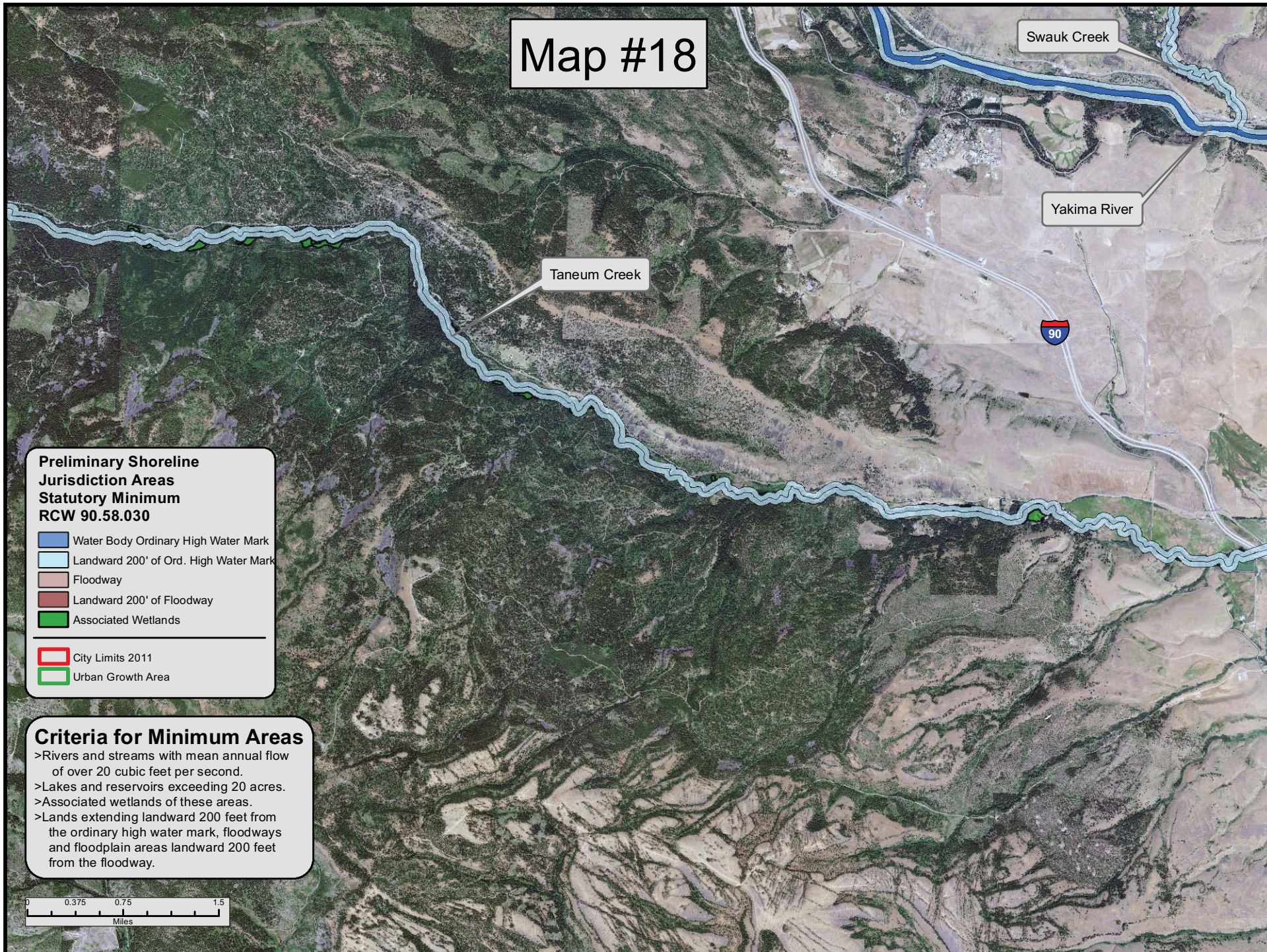


Criteria for Minimum Areas

- >Rivers and streams with mean annual flow of over 20 cubic feet per second.
- >Lakes and reservoirs exceeding 20 acres.
- >Associated wetlands of these areas.
- >Lands extending landward 200 feet from the ordinary high water mark, floodways and floodplain areas landward 200 feet from the floodway.

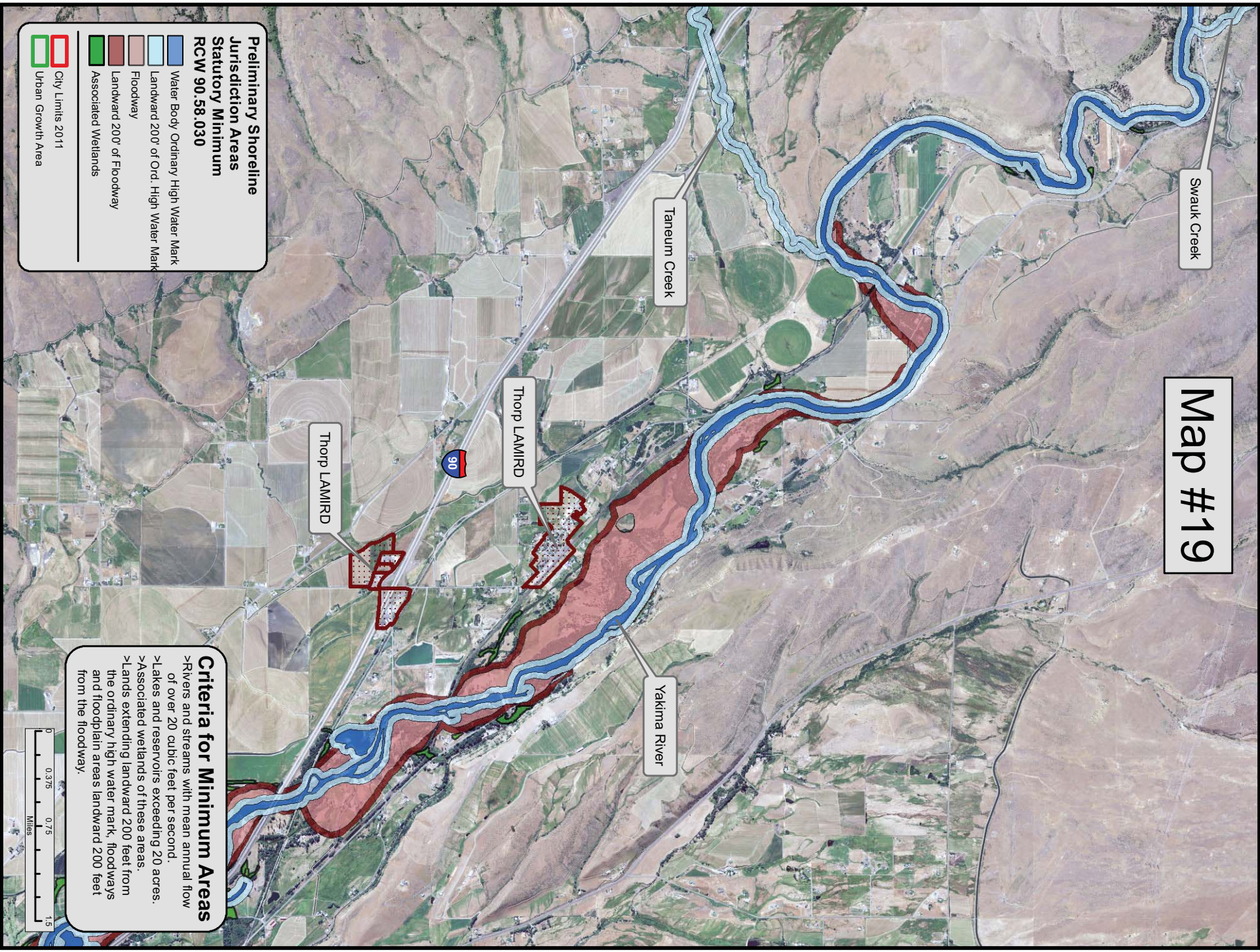
Shoreline jurisdiction boundaries depicted on this map are approximate. They have not been formally delineated or surveyed and are intended for planning purposes only. Additional site-specific evaluation may be needed to confirm or verify the information shown on this map.

Map #18



Shoreline jurisdiction boundaries depicted on this map are approximate. They have not been formally delineated or surveyed and are intended for planning purposes only. Additional site-specific evaluation may be needed to confirm or verify the information shown on this map.

Map #19



Map #20

Preliminary Shoreline Jurisdiction Areas Statutory Minimum RCW 90.58.030

- Water Body Ordinary High Water Mark
- Landward 200' of Ord. High Water Mark
- Floodway
- Landward 200' of Floodway
- Associated Wetlands

- City Limits 2011
- Urban Growth Area

Criteria for Minimum Areas

- >Rivers and streams with mean annual flow of over 20 cubic feet per second.
- >Lakes and reservoirs exceeding 20 acres.
- >Associated wetlands of these areas.
- >Lands extending landward 200 feet from the ordinary high water mark, floodways and floodplain areas landward 200 feet from the floodway.

Naneum Creek

0 0.375 0.75 1.5
Miles

Shoreline jurisdiction boundaries depicted on this map are approximate. They have not been formally delineated or surveyed and are intended for planning purposes only. Additional site-specific evaluation may be needed to confirm or verify the information shown on this map.

Map #21

County Line: Washington State RCW describes the River as the border between Kittitas and Yakima counties.

Little Naches River

Yakima County

Quartz Creek

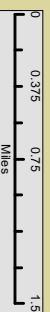
County Line

Preliminary Shoreline Jurisdiction Areas Statutory Minimum RCW 90.58.030

- Water Body Ordinary High Water Mark
- Landward 200' of Ord. High Water Mark
- Floodway
- Landward 200' of Floodway
- Associated Wetlands
- City Limits 2011
- Urban Growth Area

Criteria for Minimum Areas

- >Rivers and streams with mean annual flow of over 20 cubic feet per second.
- >Lakes and reservoirs exceeding 20 acres.
- >Associated wetlands of these areas.
- >Lands extending landward 200 feet from the ordinary high water mark, floodways and floodplain areas landward 200 feet from the floodway.



Shoreline jurisdiction boundaries depicted on this map are approximate. They have not been formally delineated or surveyed and are intended for planning purposes only. Additional site-specific evaluation may be needed to confirm or verify the information shown on this map.

Map #22

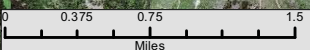
Manastash Creek
South Fork

Manastash Lake

Preliminary Shoreline Jurisdiction Areas Statutory Minimum RCW 90.58.030

- Water Body Ordinary High Water Mark
- Landward 200' of Ord. High Water Mark
- Floodway
- Landward 200' of Floodway
- Associated Wetlands

- City Limits 2011
- Urban Growth Area

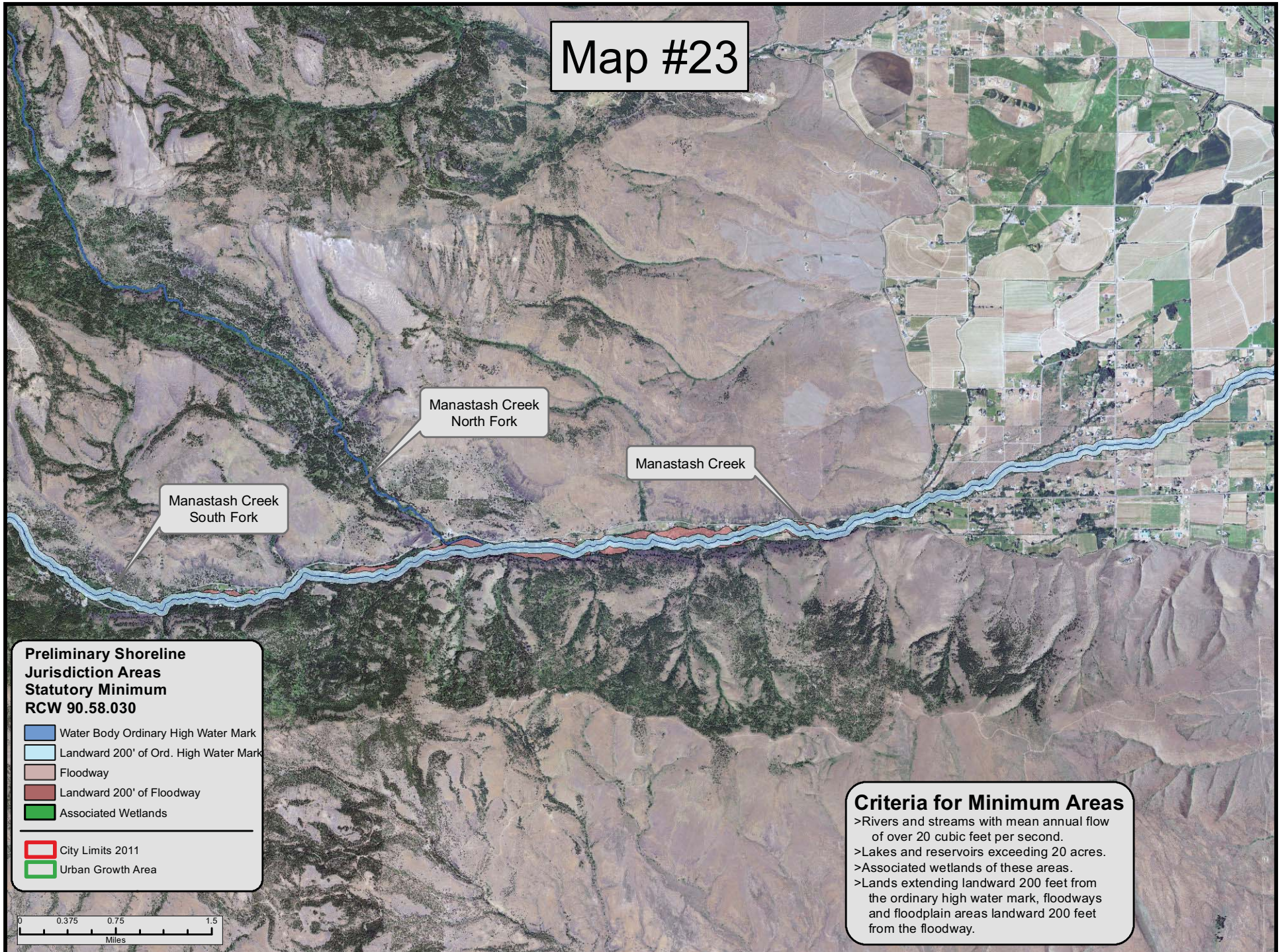


Criteria for Minimum Areas

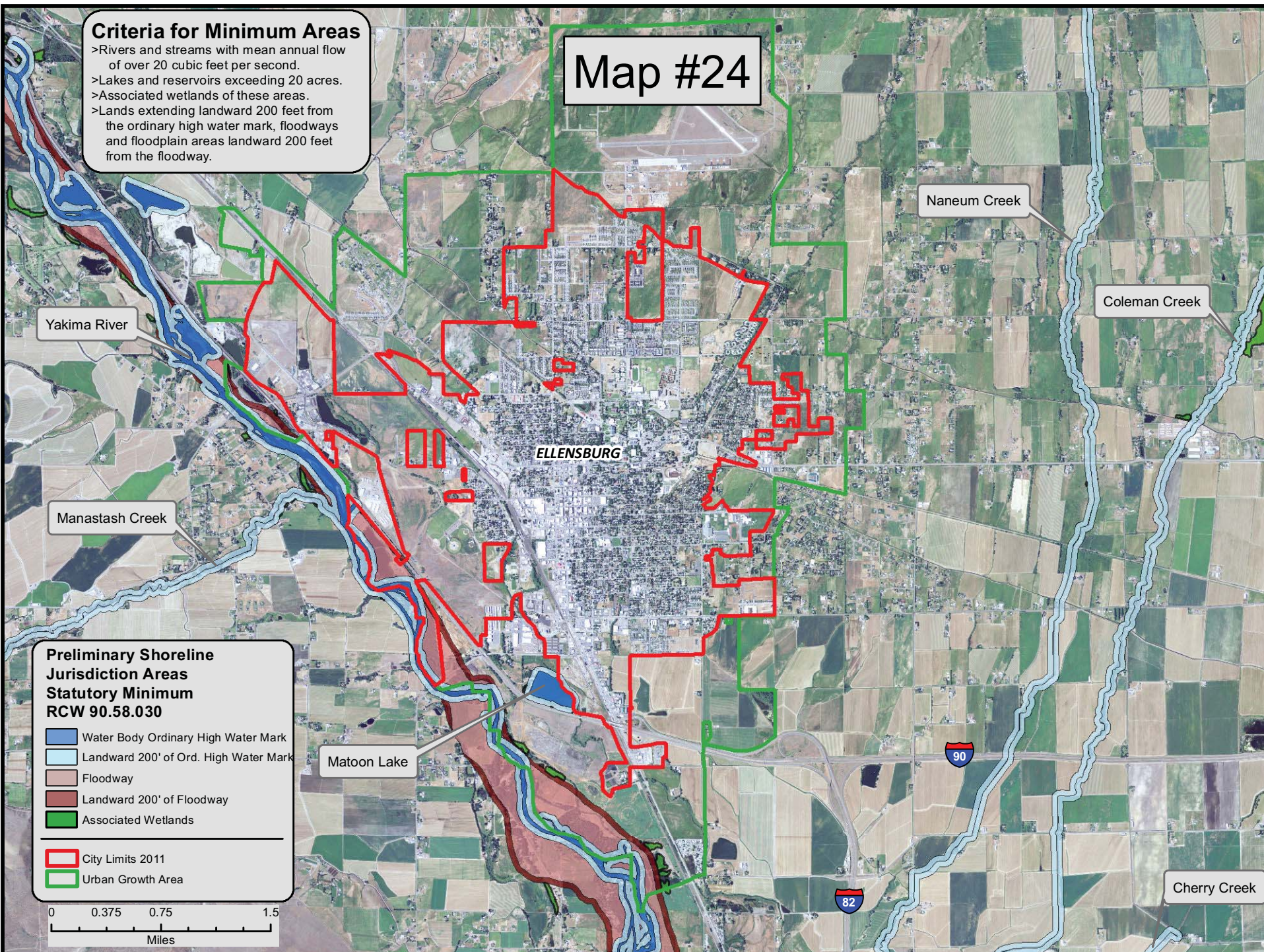
- >Rivers and streams with mean annual flow of over 20 cubic feet per second.
- >Lakes and reservoirs exceeding 20 acres.
- >Associated wetlands of these areas.
- >Lands extending landward 200 feet from the ordinary high water mark, floodways and floodplain areas landward 200 feet from the floodway.

Shoreline jurisdiction boundaries depicted on this map are approximate. They have not been formally delineated or surveyed and are intended for planning purposes only. Additional site-specific evaluation may be needed to confirm or verify the information shown on this map.

Map #23



Shoreline jurisdiction boundaries depicted on this map are approximate. They have not been formally delineated or surveyed and are intended for planning purposes only. Additional site-specific evaluation may be needed to confirm or verify the information shown on this map.



Shoreline jurisdiction boundaries depicted on this map are approximate. They have not been formally delineated or surveyed and are intended for planning purposes only. Additional site-specific evaluation may be needed to confirm or verify the information shown on this map.

Map #25

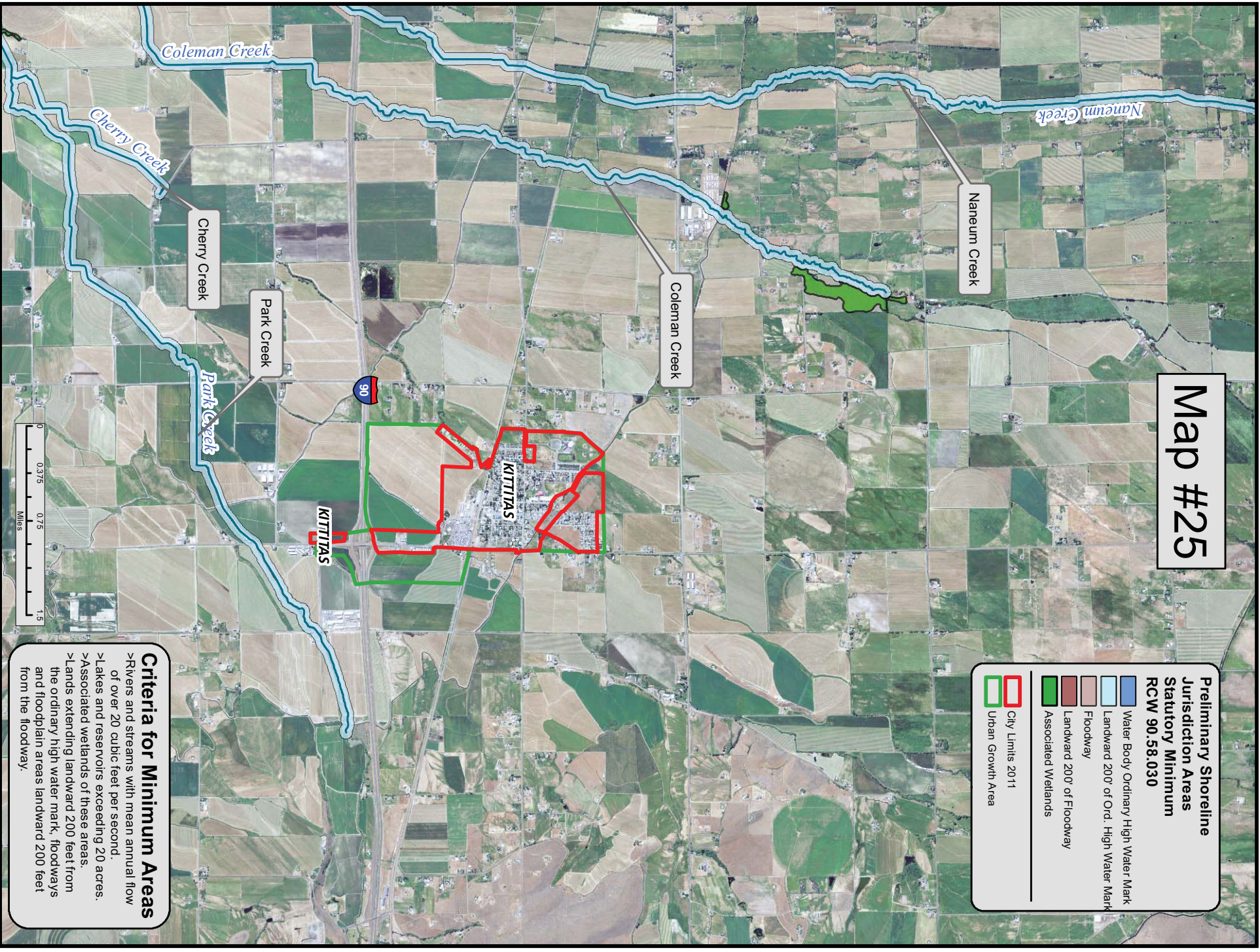
Preliminary Shoreline Jurisdiction Areas Statutory Minimum RCW 90.58.030

- Water Body Ordinary High Water Mark
- Landward 200' of Ord. High Water Mark
- Floodway
- Landward 200' of Floodway
- Associated Wetlands

- City Limits 2011
- Urban Growth Area

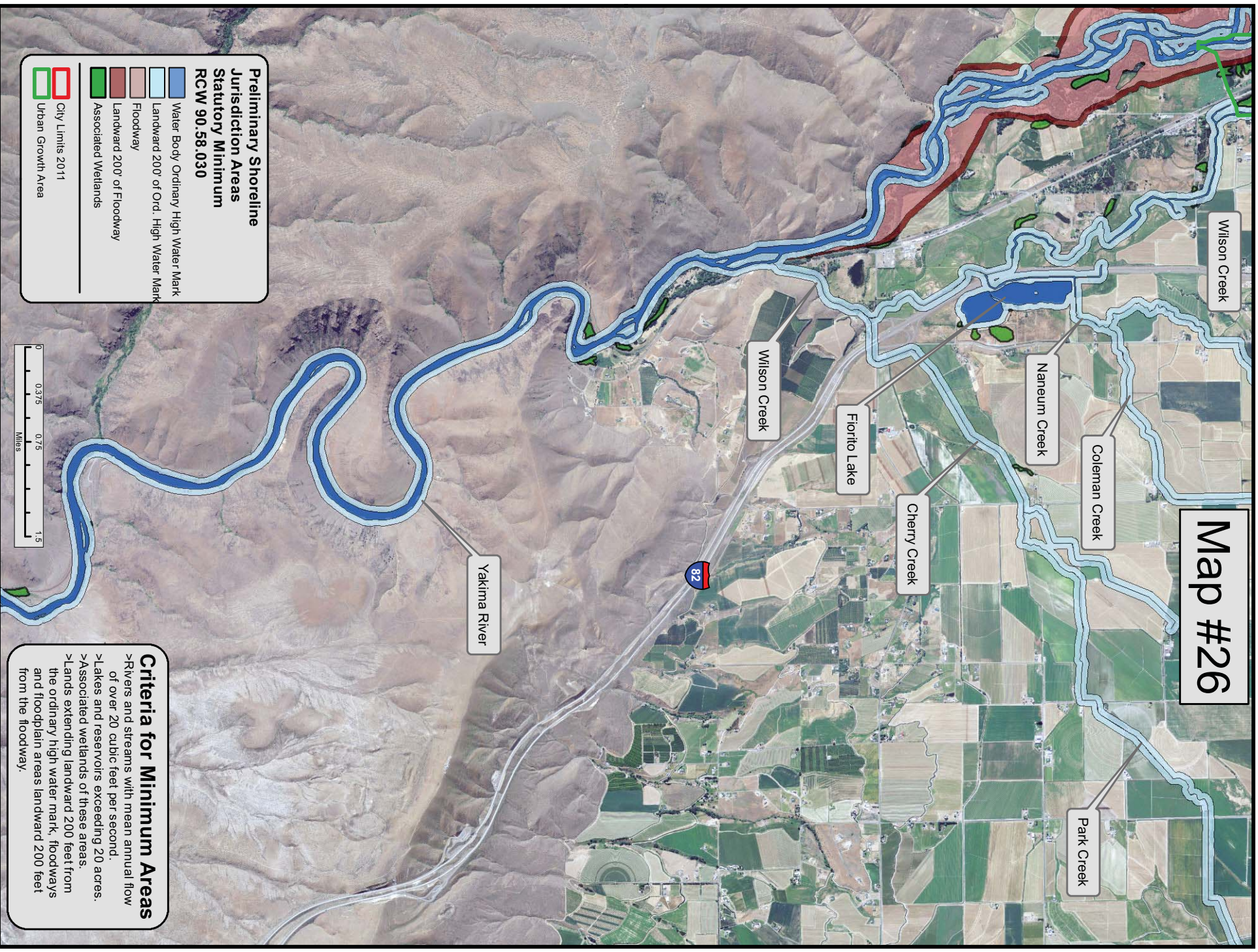
Criteria for Minimum Areas

- >Rivers and streams with mean annual flow of over 20 cubic feet per second.
- >Lakes and reservoirs exceeding 20 acres.
- >Associated wetlands of these areas.
- >Lands extending landward 200 feet from the ordinary high water mark, floodways and floodplain areas landward 200 feet from the floodway.



Shoreline jurisdiction boundaries depicted on this map are approximate. They have not been formally delineated or surveyed and are intended for planning purposes only. Additional site-specific evaluation may be needed to confirm or verify the information shown on this map.

Map #26



Shoreline jurisdiction boundaries depicted on this map are approximate. They have not been formally delineated or surveyed and are intended for planning purposes only. Additional site-specific evaluation may be needed to confirm or verify the information shown on this map.

Map #27

Yakima River

County Line

Yakima County

City Limits 2011

Urban Growth Area

Water Body Ordinary High Water Mark

Landward 200' of Ord. High Water Mark

Floodway

Landward 200' of Floodway

Associated Wetlands

Preliminary Shoreline Jurisdiction Areas

Statutory Minimum

RCW 90.58.030

Water Body Ordinary High Water Mark

Landward 200' of Ord. High Water Mark

Floodway

Landward 200' of Floodway

Associated Wetlands

Criteria for Minimum Areas

- >Rivers and streams with mean annual flow of over 20 cubic feet per second.
- >Lakes and reservoirs exceeding 20 acres.
- >Associated wetlands of these areas.
- >Lands extending landward 200 feet from the ordinary high water mark, floodways and floodplain areas landward 200 feet from the floodway.



Shoreline jurisdiction boundaries depicted on this map are approximate. They have not been formally delineated or surveyed and are intended for planning purposes only. Additional site-specific evaluation may be needed to confirm or verify the information shown on this map.

Map #28

Grant County

Columbia River

County Line

Preliminary Shoreline Jurisdiction Areas Statutory Minimum RCW 90.58.030

- Water Body Ordinary High Water Mark
- Landward 200' of Ord. High Water Mark
- Floodway
- Landward 200' of Floodway
- Associated Wetlands

- City Limits 2011
- Urban Growth Area

Criteria for Minimum Areas

- > Rivers and streams with mean annual flow of over 20 cubic feet per second.
- > Lakes and reservoirs exceeding 20 acres.
- > Associated wetlands of these areas.
- > Lands extending landward 200 feet from the ordinary high water mark, floodways and floodplain areas landward 200 feet from the floodway.



Shoreline jurisdiction boundaries depicted on this map are approximate. They have not been formally delineated or surveyed and are intended for planning purposes only. Additional site-specific evaluation may be needed to confirm or verify the information shown on this map.

Map #29



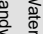
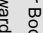
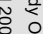


Columbia River

County Line

Grant County

- Criteria for Minimum Areas**
- > Rivers and streams with mean annual flow of over 20 cubic feet per second.
 - > Lakes and reservoirs exceeding 20 acres.
 - > Associated wetlands of these areas.
 - > Lands extending landward 200 feet from the ordinary high water mark, floodways and floodplain areas landward 200 feet from the floodway.

Preliminary Shoreline Jurisdiction Areas Statutory Minimum RCW 90.58.030

	Water Body Ordinary High Water Mark
	Landward 200' of Ord. High Water Mark
	Floodway
	Landward 200' of Floodway
	Associated Wetlands
	City Limits 2011
	Urban Growth Area



Shoreline jurisdiction boundaries depicted on this map are approximate. They have not been formally delineated or surveyed and are intended for planning purposes only. Additional site-specific evaluation may be needed to confirm or verify the information shown on this map.

Map #30

Grant County

County Line

Columbia River

Vantage
LAMIRD

90

**Preliminary Shoreline
Jurisdiction Areas
Statutory Minimum
RCW 90.58.030**

- Water Body Ordinary High Water Mark
- Landward 200' of Ord. High Water Mark
- Floodway
- Landward 200' of Floodway
- Associated Wetlands
- City Limits 2011
- Urban Growth Area

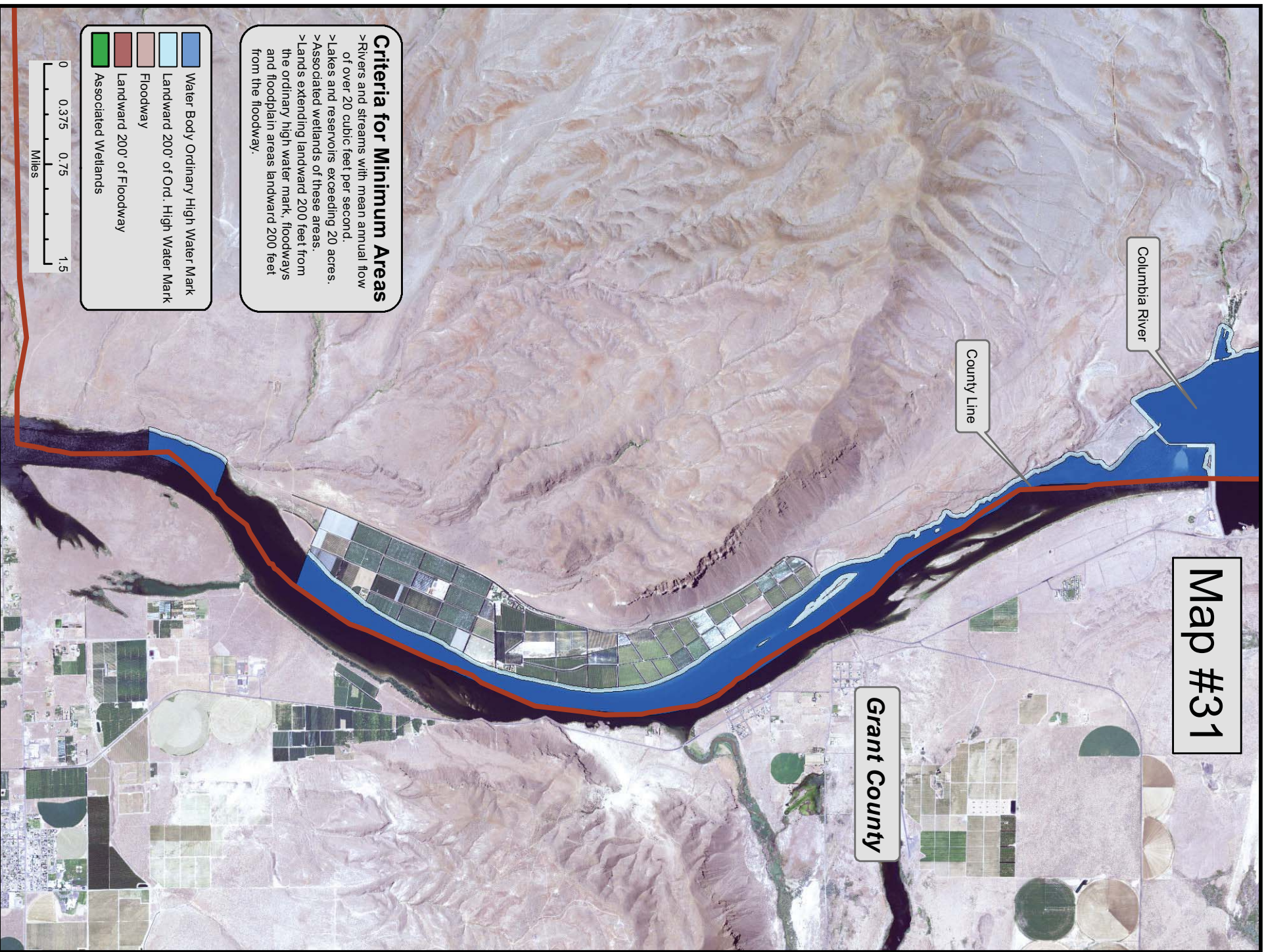
Criteria for Minimum Areas

- >Rivers and streams with mean annual flow of over 20 cubic feet per second.
- >Lakes and reservoirs exceeding 20 acres.
- >Associated wetlands of these areas.
- >Lands extending landward 200 feet from the ordinary high water mark, floodways and floodplain areas landward 200 feet from the floodway.



Shoreline jurisdiction boundaries depicted on this map are approximate. They have not been formally delineated or surveyed and are intended for planning purposes only. Additional site-specific evaluation may be needed to confirm or verify the information shown on this map.

Map #31



Shoreline jurisdiction boundaries depicted on this map are approximate. They have not been formally delineated or surveyed and are intended for planning purposes only. Additional site-specific evaluation may be needed to confirm or verify the information shown on this map.