

Sample Ballot

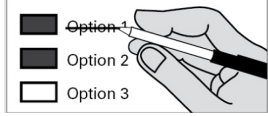
November 2022 General Election
November 8, 2022
Kittitas County, Washington

Precinct sample
Page 1 of 3

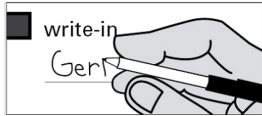
To Vote: Please use a black or blue ink pen. Completely fill in the box next to your choice:



Change your mind? Draw a line through the response area - you may then make another selection:



Candidate not listed? Mark the box next to the "write-in" line and write in your choice:



Need a new ballot? Destroyed, damaged, or lost your ballot? You can request a Replacement Ballot: (509) 962-7503
Return your ballot early! In order to be counted, ballots must be received or postmarked by 8:00pm Election Day, November 8th. If using USPS, consider mailing by the Friday prior to the election. Postage is no longer required.

24 hour, Secure Ballot Drop Box locations are listed on your security sleeve.

Learn more about voting centers and accessible voting equipment at: www.bit.ly/Vote-KittitasCo

Who donates to campaigns?
View contributors for candidates and measures
Public Disclosure Commission
www.pdc.wa.gov
Toll Free (877) 601-2828

State Advisory Votes

Advisory Vote No. 39 Engrossed Substitute Senate Bill 5974

The legislature increased, without a vote of the people, the tax on aircraft fuel from 11 cents to 18 cents per gallon, costing \$14 million in its first ten years, for government spending. This tax increase should be:

Repealed

Maintained

Advisory Vote No. 40 Engrossed Substitute House Bill 2076

The legislature imposed, without a vote of the people, premiums on "transportation network companies" to provide workers compensation to their drivers, costing an indeterminate amount in its first ten years, for government spending. This tax increase should be:

Repealed

Maintained

Partisan Offices

READ: Each candidate for partisan office may state a political party that he or she prefers. A candidate's preference does not imply that the candidate is nominated or endorsed by the party, or that the party approves of or associates with that candidate.

Federal Offices

US Senator

6 year term/ Vote for 1

Patty Murray
(Prefers Democratic Party)

Tiffany Smiley
(Prefers Republican Party)

Write-in

Congressional District No. 8 US Representative

2 year term/ Vote for 1

Kim Schrier
(Prefers Democratic Party)

Matt Larkin
(Prefers Republican Party)

Write-in

State Office

Secretary of State

2 year unexpired term/ Vote for 1

Steve Hobbs
(Prefers Democratic Party)

Julie Anderson
(Prefers Nonpartisan Party)

Write-in

Legislative District 13

State Senator

4 year term/ Vote for 1

Judy Warnick
(Prefers Republican Party)

Write-in

State Representative Position No. 1

2 year term/ Vote for 1

Tom Dent
(Prefers Republican Party)

Write-in

State Representative Position No. 2

2 year term/ Vote for 1

Alex Ybarra
(Prefers Republican Party)

Write-in

59
20790

Sample Ballot

November 2022 General Election
November 8, 2022
Kittitas County, Washington

Precinct sample
Page 2 of 3

59
20790

County Offices

County Assessor

4 year term/ Vote for 1

Mike Hougardy
(Prefers Republican Party)

Write-in

County Auditor

4 year term/ Vote for 1

Bryan Elliott
(Prefers Republican Party)

Jerry Pettit
(Prefers Democratic Party)

Write-in

County Clerk

Short and Full term/ Vote for 1

Karen Bowen
(Prefers Republican Party)

Brian Cullinane
(Prefers Republican Party)

Write-in

**County Commissioner
District No. 3**

4 year term/ Vote for 1

Brett Wachsmith
(Prefers GOP Party)

Write-in

County Coroner

4 year term/ Vote for 1

Nicholas (Nick) Henderson
(Prefers Republican Party)

Deborah A. Robinson
(Prefers Independent Party)

Write-in

County Prosecuting Attorney

4 year term/ Vote for 1

Greg Zempel
(Prefers Republican Party)

Write-in

County Sheriff

4 year term/ Vote for 1

Clay Myers
(Prefers Republican Party)

Write-in

County Treasurer

4 year term/ Vote for 1

Amy Cziske
(Prefers Republican Party)

Write-in

Nonpartisan Offices

Courts

**Supreme Court Justice
Position No. 1**

6 year term/ Vote for 1

Mary I. Yu

Write-in

**Supreme Court Justice
Position No. 5**

6 year term/ Vote for 1

Barbara Madsen

Write-in

**Supreme Court Justice
Position No. 6**

6 year term/Vote for 1

G. Helen Whitener

Write-in

Upper District Court Judge

4 year term/ Vote for 1

Craig Juris

Eileen Murphy Young

Write-in

Lower District Court Judge

4 year term/ Vote for 1

Paul Sander

Write-in

Public Utility District No. 1

**PUD No. 1
Commissioner District No. 3**

6 year term/ Vote for 1

Joe O'Leary

Write-in

District Measure

**Hospital District No. 2
Proposition No. 1**

**Proposition Authorizing Permanent
Emergency Medical Services Levy**

Will Kittitas County Public Hospital District No. 2 be authorized to impose a PERMANENT regular tax levy of \$.50 cents or less per thousand dollars of assessed valuation to pay for emergency medical care and related services?

Yes

No

November 2022 General Election
November 8, 2022
Kittitas County, Washington

Precinct sample
Page 3 of 3

**Hospital District No. 2
Proposition No. 2**

Levy Lid Lift for Health Care Services

The Commission of Public Hospital District No. 2, Kittitas County, Washington adopted Resolution No. 07-18-22-02 concerning an increase in the district's regular property tax levy. If approved, this proposition would provide additional funds for emergency medical services, urgent care services, and other health care services. It authorizes a maximum regular property tax levy rate for collection in 2023 of \$.50/\$1,000 assessed value. The 2023 levy amount will be used for the purpose of computing the limitations for levies in subsequent years. Should this proposition be:

Approved _____
 Rejected _____

This page intentionally left blank