

07098-2 PARENT-TIMOTHY SHORT PLAT

Point # 1					10000.000	10000.000
N	89	11	19	E	1071.460	
Point # 2					10015.173	11071.353
S	1	39	36	E	16.170	
Point # 3					9999.010	11071.821
N	89	11	19	E	172.030	
Point # 4					10001.446	11243.834
S	1	39	36	E	453.310	
Point # 5					9548.326	11256.965
N	6	49	19	E	675.000	
Radius Point # 6					10218.547	11337.145
					Length = 32.751	Tangent = 16.379
S	9	36	7	W	675.000	
Point # 7					9553.004	11224.553
N	80	23	53	W	691.800	
Point # 8					9668.397	10542.445
N	88	47	18	W	109.830	
Point # 9					9670.720	10432.640
S	83	46	6	W	132.720	
Point # 10					9656.313	10300.704
N	6	13	54	W	475.000	
Radius Point # 11					10128.506	10249.143
					Length = 167.022	Tangent = 84.382
S	13	54	54	W	475.000	
Point # 12					9667.446	10134.914
N	76	5	6	W	133.640	
Point # 13					9699.584	10005.196
S	13	54	54	W	350.000	
Radius Point # 14					9359.855	9921.027
					Length = 110.041	Tangent = 55.478
N	4	5	56	W	350.000	
Point # 15					9708.960	9896.010
S	4	5	56	E	350.000	
Radius Point # 16					9359.855	9921.027
					Length = 49.285	Tangent = 24.683
N	12	10	1	W	350.000	
Point # 17					9701.993	9847.261
S	77	49	59	W	68.140	

4/16/2008

Point # 18					9687.632	9780.651
N	1	11	25	W	278.420	
Point # 19					9965.992	9774.868
N	89	11	19	E	225.780	
Point # 20					9969.189	10000.625
N	1	11	25	W	30.820	
Point # 21					10000.003	9999.985

AREA = 524,254.52 sf (12.0352 acres)

LENGTH = 3384.12

NORTHING ERROR = +0.003

EASTING ERROR = -0.015

LINEAR ERROR = N 79 27 59 W 0.015

LOT 1

Point # 1					10000.000	10000.000
N	89	11	19	E	225.780	
Point # 2					10003.197	10225.757
N	1	11	25	W	30.820	
Point # 3					10034.011	10225.117
N	89	11	19	E	216.180	
Point # 4					10037.072	10441.275
S	1	39	36	E	349.150	
Point # 5					9688.068	10451.390
N	2	45	43	E	475.000	
Radius Point # 6					10162.517	10474.278
					Length = 92.462	Tangent = 46.378
S	13	54	54	W	475.000	
Delta =	11	9	11			
Point # 7					9701.456	10360.049
N	76	5	6	W	133.640	
Point # 8					9733.594	10230.331
S	13	54	54	W	350.000	
Radius Point # 9					9393.866	10146.162
					Length = 159.326	Tangent = 81.068
N	12	10	1	W	350.000	
Delta =	26	4	55			
Point # 10					9736.004	10072.396
S	77	49	59	W	68.140	
Point # 11					9721.642	10005.787
N	1	11	25	W	278.420	
Point # 12					10000.002	10000.003

AREA = 131,101.99 sf (3.0097 acres)

LENGTH = 1302.13

NORTHING ERROR = +0.002

EASTING ERROR = +0.003

LINEAR ERROR = N 52 35 34 E 0.004

LOT 2

Point # 1						10000.000	10000.000
	N	89	11	19	E	382.750	
Point # 2						10005.420	10382.712
	S	1	39	36	E	351.500	
Point # 3						9654.068	10392.894
	N	80	23	53	W	67.540	
Point # 4						9665.333	10326.300
	N	88	47	18	W	109.830	
Point # 5						9667.656	10216.495
	S	83	46	6	W	132.720	
Point # 6						9653.249	10084.559
	N	6	13	54	W	475.000	
	Radius Point # 7					10125.443	10032.998
	Delta = 8 59 37					Length = 74.560	Tangent = 37.357
	S	2	45	43	W	475.000	
Point # 8						9650.994	10010.110
	N	1	39	36	W	349.150	
Point # 9						9999.998	9999.995

AREA = 131,121.40 sf (3.0101 acres)

LENGTH = 1393.49

NORTHING ERROR = -0.002

EASTING ERROR = -0.005

LINEAR ERROR = S 64 19 49 W 0.005

LOT 3

Point # 1					10000.000	10000.000
N	89	11	19	E	342.340	
<hr/>						
Point # 2					10004.848	10342.306
S	1	39	36	E	414.590	
<hr/>						
Point # 3					9590.432	10354.316
N	80	23	53	W	349.020	
<hr/>						
Point # 4					9648.649	10010.185
N	1	39	36	W	351.500	
<hr/>						
Point # 5					10000.002	10000.003

AREA = 131,115.83 sf (3.0100 acres)

LENGTH = 1457.45

NORTHING ERROR = +0.002

EASTING ERROR = +0.003

LINEAR ERROR = N 60 46 58 E 0.003

4/17/2008

LOT 4

Point # 1						10000.000	10000.000
	N	89	11	19	E	130.200	
Point # 2						10001.844	10130.187
	S	1	39	36	E	16.170	
Point # 3						9985.681	10130.655
	N	89	11	19	E	172.030	
Point # 4						9988.117	10302.668
	S	1	39	36	E	453.310	
Point # 5						9534.997	10315.800
	N	6	49	19	E	675.000	
	Radius Point # 6					10205.218	10395.979
	Delta = 2 46 48					Length = 32.751	Tangent = 16.379
	S	9	36	7	W	675.000	
Point # 7						9539.674	10283.388
	N	80	23	53	W	275.240	
Point # 8						9585.585	10012.004
	N	1	39	36	W	414.590	
Point # 9						10000.001	9999.994

AREA = 130,916.43 sf (3.0054 acres)

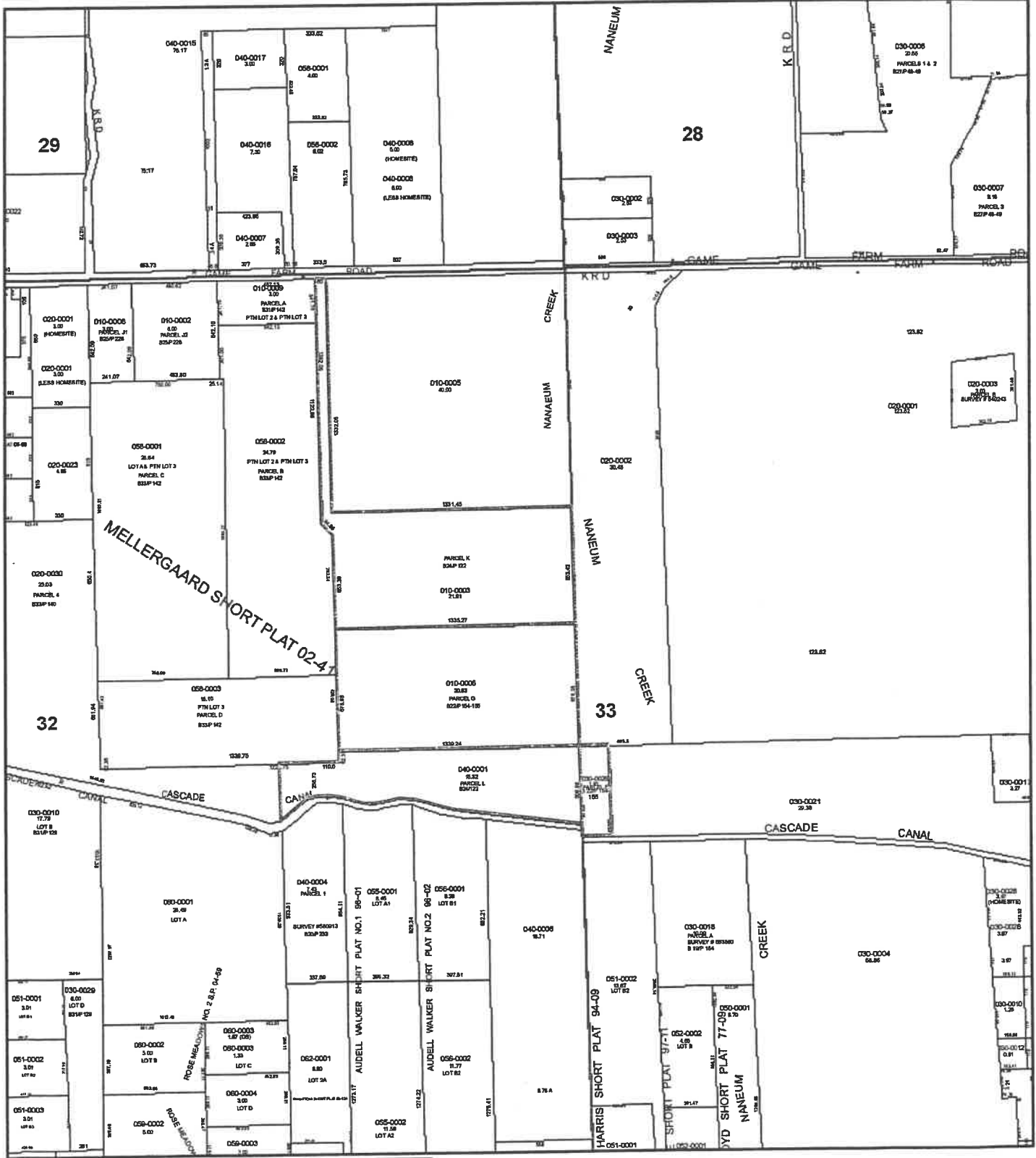
LENGTH = 1461.54

NORTHING ERROR = +0.001

EASTING ERROR = -0.006

LINEAR ERROR = N 80 14 29 W 0.006

Job #07098-1 Schmidt



- Buffer Result
- Townships
- Sections
- Tax Parcels

Disclaimer:
 Kittitas County makes every effort to produce and publish the most current and accurate information possible. No warranties, expressed or implied, are provided for the data provided, its use, or its interpretation. Kittitas County does not guarantee the accuracy of the material contained herein and is not responsible for any misuse or representations by others regarding this information or its derivatives.

