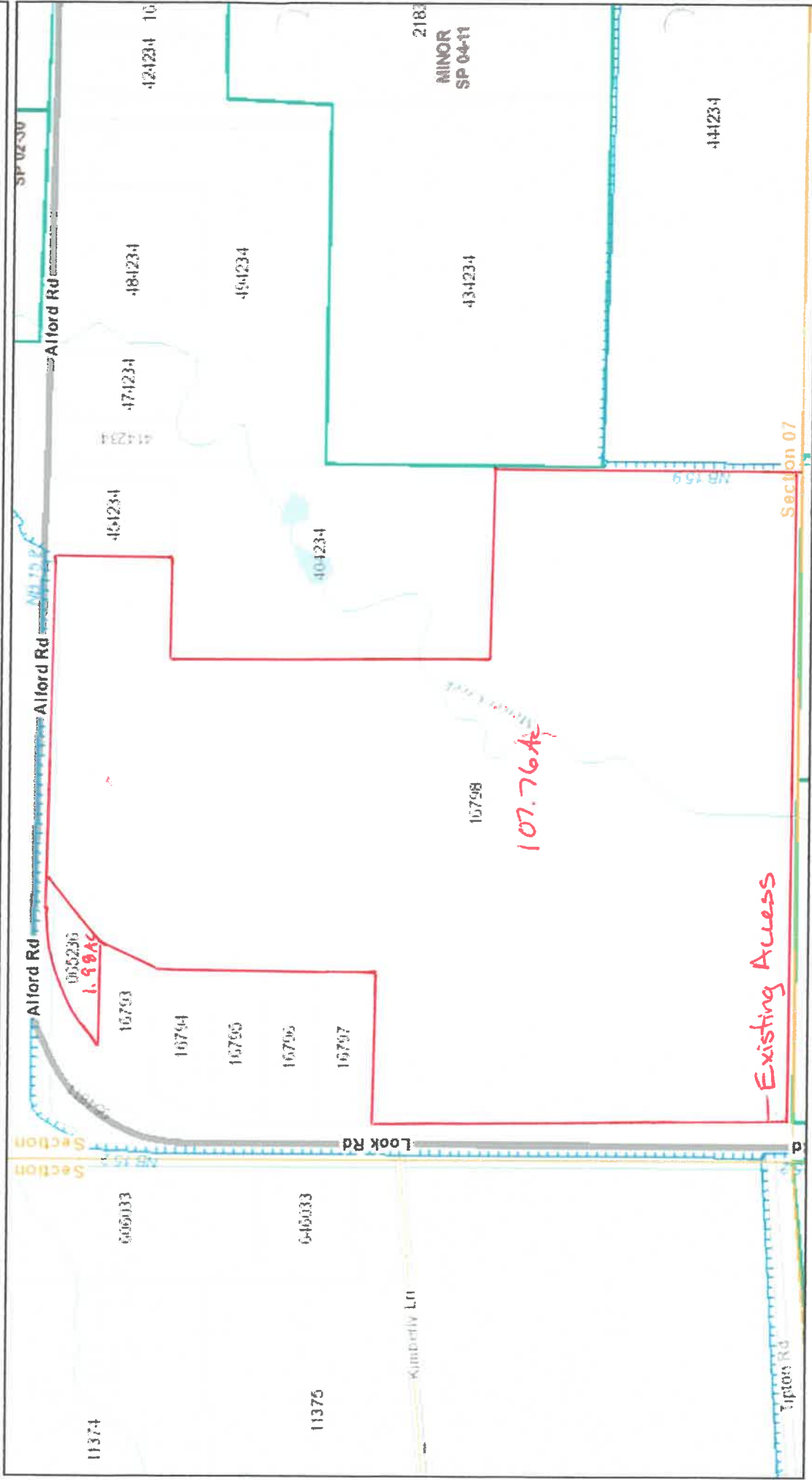


# CARLSON & CARLSON FARMS - EXISTING



Date: 1/7/2019

1 inch = 752 feet  
Relative Scale 1:9,028

**Disclaimer:**  
Kittitas County makes every effort to produce and publish the most current and accurate information possible. No warranties, expressed or implied, are provided for the data, its use, or its interpretation. Kittitas County does not guarantee the accuracy of the material contained herein and is not responsible for any use, misuse or representations by others regarding this information or its derivatives.



Both TPN 065236 \$16798  
have no structures or  
improvements

107.76 Ac

Existing Access

MINOR  
SP 04-11

Section 07

SP 02-30

Section  
NB 15

Section 07

Alford Rd

Alford Rd

Alford Rd

Look Rd

Kimberly Ln

Tipton Rd

11374

6-05033

16793

16794

16795

16796

16797

6-49033

11375

424234

454234

464234

474234

484234

424234 10

404234

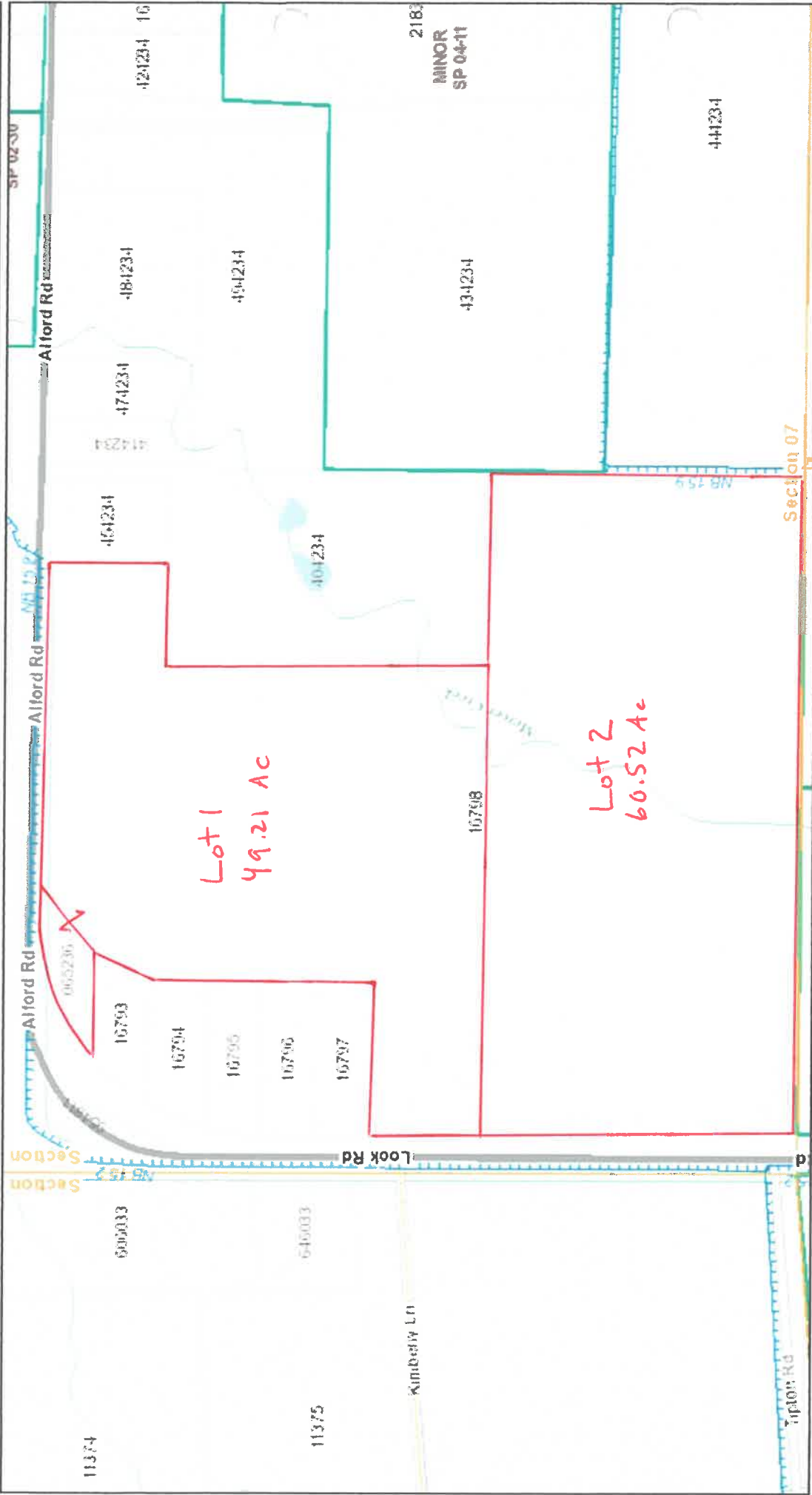
434234

444234

2183

NB 159

# CARLSON & CARLSON FARMS - PROPOSED



Date: 1/7/2019

1 inch = 752 feet

Relative Scale 1:9,028

**Disclaimer:**  
 Kittitas County makes every effort to produce and publish the most current and accurate information possible. No warranties, expressed or implied, are provided for the data, its use, or its interpretation. Kittitas County does not guarantee the accuracy of the material contained herein and is not responsible for any use, misuse or representations by others regarding this information or its derivatives.



Proposed

