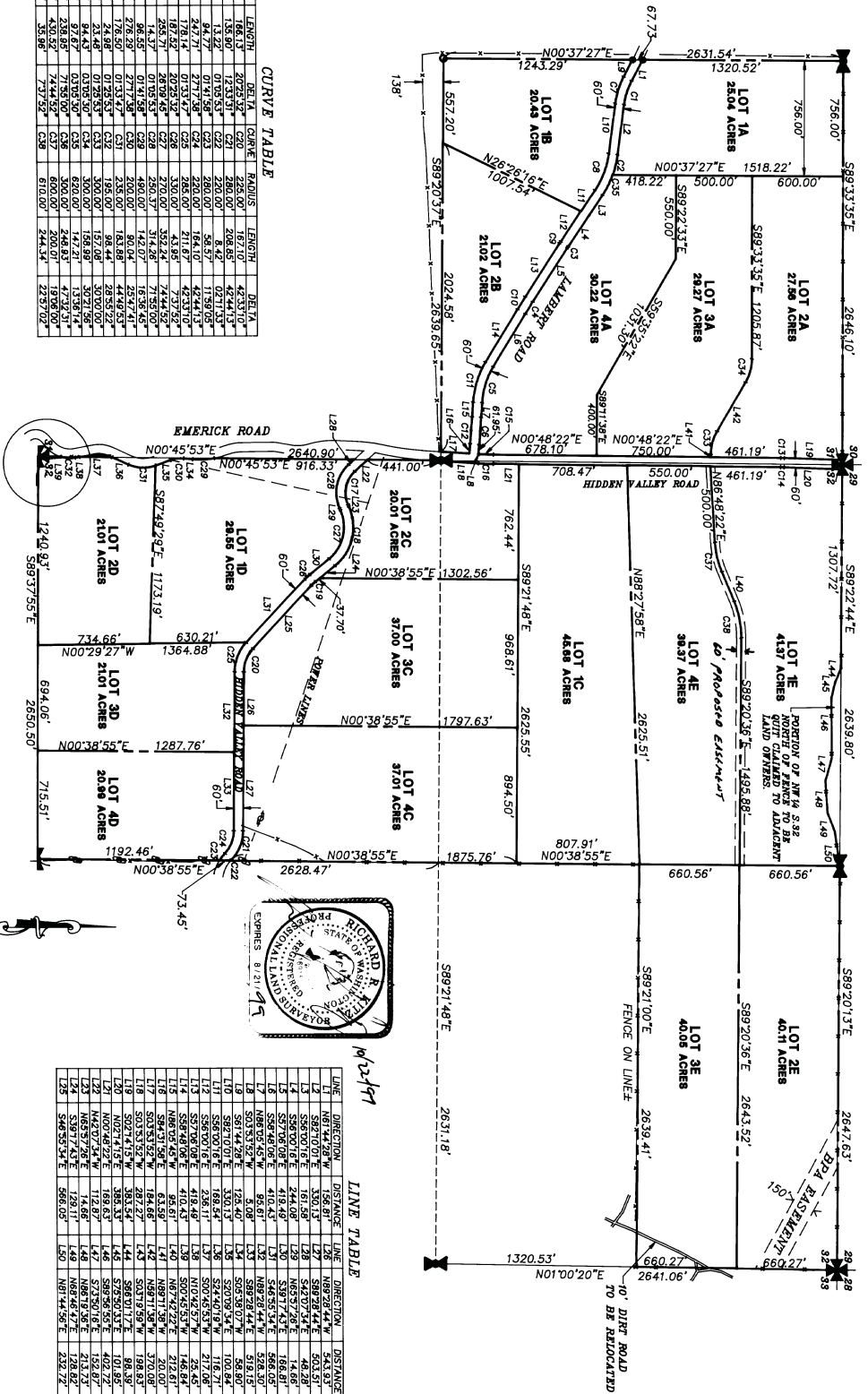


**THE PENKERT RANCH BOUNDARY ADJUSTMENT
AND TAX LOT SEGREGATION
SECTIONS 31 AND 32 T.20N.R.17E. W.M.**



CURVE TABLE

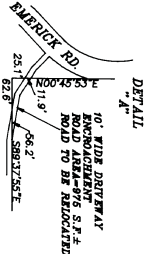
CURVE	RADIUS	LENGTH	DELTA	CHORD	AREA	RADIUS	LENGTH	DELTA
C1	468.00'	186.13'	20.23°	157.00'	226.00'	186.13'	187.00'	42.33°
C2	620.00'	135.80'	12.33°	121.00'	200.00'	135.80'	208.45'	42.44°
C3	980.00'	83.26'	7.14°	77.00'	200.00'	83.26'	268.00'	42.44°
C4	3200.00'	24.77'	0.41°	23.75'	220.00'	24.77'	184.10'	42.44°
C5	3200.00'	24.77'	0.41°	23.75'	220.00'	24.77'	184.10'	42.44°
C6	6300.00'	12.38'	0.21°	11.92'	220.00'	12.38'	184.10'	42.44°
C7	980.00'	187.92'	10.93°	174.22'	220.00'	187.92'	211.67'	42.33°
C8	250.00'	44.37'	0.76°	42.82'	220.00'	44.37'	74.24°	42.33°
C9	250.00'	44.37'	0.76°	42.82'	220.00'	44.37'	74.24°	42.33°
C10	3200.00'	24.77'	0.41°	23.75'	220.00'	24.77'	184.10'	42.33°
C11	3200.00'	24.77'	0.41°	23.75'	220.00'	24.77'	184.10'	42.33°
C12	1000.00'	74.26'	0.76°	72.53'	195.00'	74.26'	28.53°	22.22°
C13	1000.00'	74.26'	0.76°	72.53'	195.00'	74.26'	28.53°	22.22°
C14	940.00'	84.43'	0.76°	82.50'	300.00'	84.43'	198.19'	30° 21' 52"
C15	180.00'	238.85'	7.15°	228.00'	300.00'	238.85'	246.63'	47° 12' 31"
C16	300.00'	430.35'	7.15°	414.00'	600.00'	430.35'	474.21'	19° 08' 00"
C17	300.00'	430.35'	7.15°	414.00'	600.00'	430.35'	474.21'	19° 08' 00"
C18	270.00'	353.88'	7.37°	337.52'	610.00'	353.88'	223° 07' 02"	

LINE TABLE

LINE	DIRECTION	DISTANCE	LINE	DIRECTION	DISTANCE
L1	N67°44'29"W	158.81'	L28	N69°28'44"W	543.93'
L2	S89°21'01"E	330.15'	L29	N89°28'44"W	543.93'
L3	S89°21'01"E	330.15'	L30	N89°28'44"W	543.93'
L4	S89°21'01"E	330.15'	L31	N89°28'44"W	543.93'
L5	S89°21'01"E	330.15'	L32	N89°28'44"W	543.93'
L6	S89°21'01"E	330.15'	L33	N89°28'44"W	543.93'
L7	S89°21'01"E	330.15'	L34	N89°28'44"W	543.93'
L8	S89°21'01"E	330.15'	L35	N89°28'44"W	543.93'
L9	S89°21'01"E	330.15'	L36	N89°28'44"W	543.93'
L10	S89°21'01"E	330.15'	L37	N89°28'44"W	543.93'
L11	S89°21'01"E	330.15'	L38	N89°28'44"W	543.93'
L12	S89°21'01"E	330.15'	L39	N89°28'44"W	543.93'
L13	S89°21'01"E	330.15'	L40	N89°28'44"W	543.93'
L14	S89°21'01"E	330.15'	L41	N89°28'44"W	543.93'
L15	S89°21'01"E	330.15'	L42	N89°28'44"W	543.93'
L16	S89°21'01"E	330.15'	L43	N89°28'44"W	543.93'
L17	S89°21'01"E	330.15'	L44	N89°28'44"W	543.93'
L18	S89°21'01"E	330.15'	L45	N89°28'44"W	543.93'
L19	S89°21'01"E	330.15'	L46	N89°28'44"W	543.93'
L20	S89°21'01"E	330.15'	L47	N89°28'44"W	543.93'
L21	S89°21'01"E	330.15'	L48	N89°28'44"W	543.93'
L22	S89°21'01"E	330.15'	L49	N89°28'44"W	543.93'
L23	S89°21'01"E	330.15'	L50	N89°28'44"W	543.93'
L24	S89°21'01"E	330.15'	L51	N89°28'44"W	543.93'
L25	S89°21'01"E	330.15'	L52	N89°28'44"W	543.93'

LEGEND

- A SECTION CORNER COMMON TO TWO SECTIONS ONLY
- ↔ A QUARTER CORNER COMMON TO ONE SECTION ONLY
- ⊕ A QUARTER CORNER
- ⊙ A SECTION CORNER
- ⊙ A FOUND REBAR W/ CAP



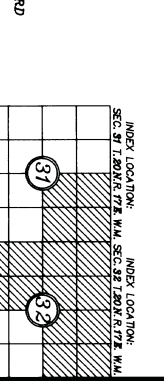
NOTE

THESE SURVEYING ARE PREPARED IN ACCORDANCE WITH THE PROVISIONS OF KENTUCKY COUNTY SUBDIVISION CODE, SECTION 16.04.020(1).

GRAPHIC SCALE

500' = 500'

0' = 500'



RECORDER'S CERTIFICATE: 1997.10.23.0011

Filed for record this 23rd day of October, 1997 at 1:30 PM in book 3 of SURVEYS at page 1067 at the request of RICHARD R. KITZ

Barbara M. Kitz, Deputy County Auditor

This map correctly represents a survey made by me or under my direction in conformance with the requirements of the Surveying and Mapping Act of 1982, as amended, and the provisions of KRS 192.010.

Eastside Consultants, Inc. Engineers - Surveyors

EASTSIDE CONSULTANTS, INC.
ENGINEERS - SURVEYORS

414 EAST FIRST STREET
C/O EDWIN WASHINGTON 98022
RENO, WASHINGTON 98022
PHONE: (509) 774-7488
FAX: (509) 774-7490

DRAWN BY	DATE	JOB NO.
R. BOGDON	9/97	96538
CHECKED BY	SCALE	SHEET
R. KITZ	1" = 500'	2 OF 2