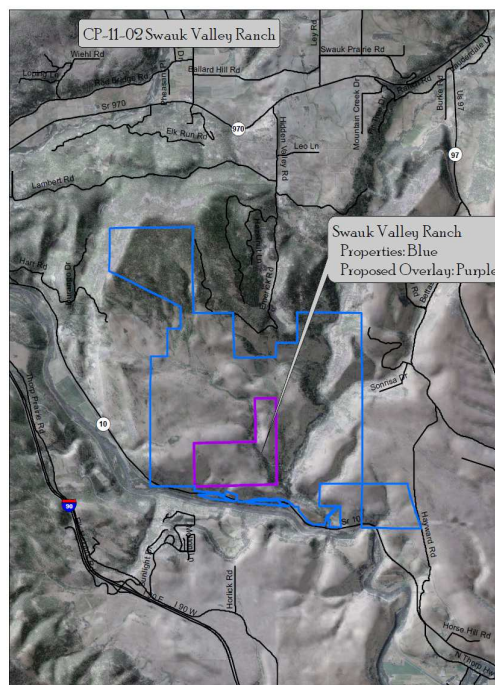
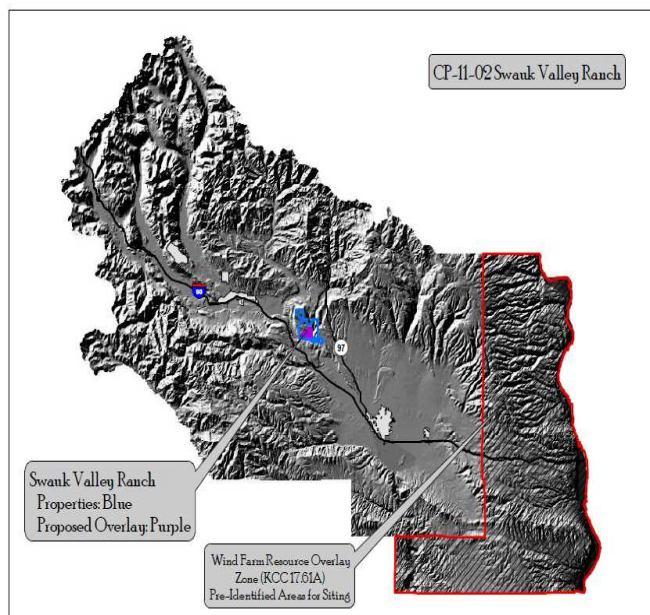


Docket No.	Project Name	Brief Description of Suggested Amendment	Who Suggested Amendment	Staff Lead	Staff Recommendation
11-02	Swauk Valley Ranch, LLC	Amend Chapter 17.12 to include a Wind Farm Site Overlay zone and add a new Wind Farm Site Overlay for 380 acres located within the “Swauk Ranch.”	Swauk Valley Ranch, LLC	Dan	Docket

On June 29, 2011, Kittitas County Community Development Services received an application from Swauk Valley Ranch, LLC to add a Wind Farm Overlay Zone as described in the Comprehensive Plan (see GPO 6.34). See the attached application and map directly below for location of Swauk Ranch and proposed Wind Farm Site Overlay. The specific amendments to Chapter 17.12, Zones Designated – Maps, and amendments to the County’s “Official Zoning Map” are provided further below. These proposed amendments were docketed with CDS prior to the June 30th docketing deadline.



DRAFT—August 5, 2011

Kittitas County Code, Chapter 17.12, ZONES DESIGNATED – MAP, is amended as follows:

17.12.010 Zones designated.

1. The unincorporated territory of Kittitas County is divided into the following land use zones:

- R Residential
- R-2 Residential II
- RR Rural Residential
- UR Urban Residential

A-3 Agricultural 3
A-5 Agriculture 5
A-20 Agricultural 20
R-3 Rural 3
R-5 Rural 5
CA Commercial Agriculture
CF Commercial Forest
C-L Limited commercial
C-G General commercial
C-H Highway commercial
PUD Planned Unit Development
I-L Light Industry
I-G General Industry
F-R Forest and Range
HT-C Historic Trailer court
L-H Liberty historic zone
A Airport
MPR Master planned resort

2. The unincorporated territory of Kittitas County includes the following overlay zones and areas:

Agricultural Study Overlay Zone

Agricultural Production District

Airport Overlay Zoning District

Bower's Field Overlay Zone

Forest Study Overlay Zone

Wind Farm Resource Overlay Zone

Wind Farm Resource Overlay Zone – Pre-identified Areas for Siting

Wind Farm Resource Overlay Zone – Swauk Ranch

The Kittitas County Official Zoning Map is amended as follows:

