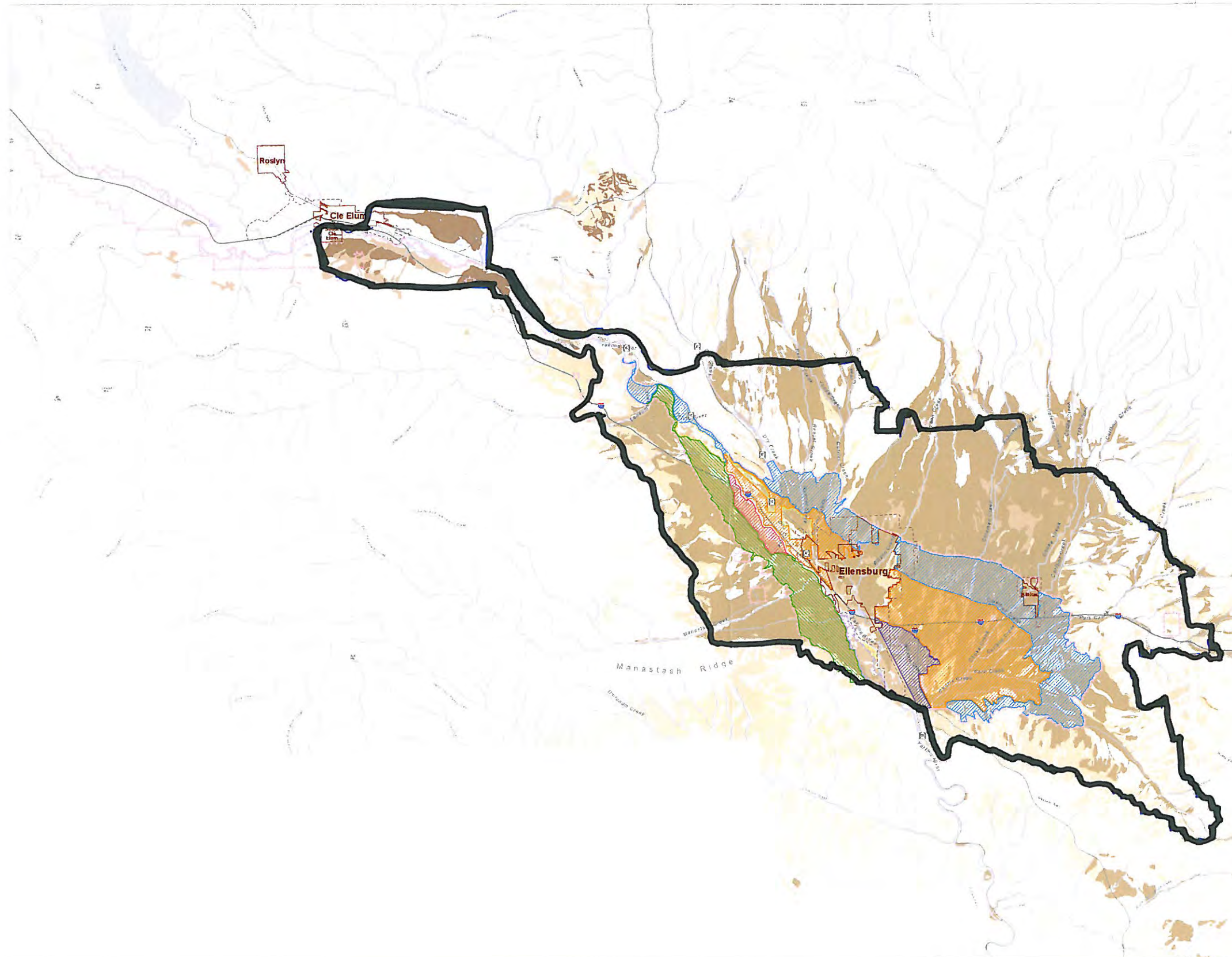




Transfer of Development Rights Initiative

Central Kittitas County Water Rights and Farmland Soils

DRAFT



Urban Growth Area Boundary
 Incorporation Boundary
 County Tax Parcel Boundary
 Interstate Highway
 State or US Highway

Non-Proratable Water Rights by Irrigation District or Entity*
 Brackets & levels listed in parentheses

- Bull Ditch (6,471 non-proratable)
- Cascade (49,525 non-proratable)
- Ellensburg Mill and Feed (service area unknown) (4,834 non-proratable)
- Ellensburg Water Company including Woldale / Olsen, Peter Wold** and Klodke** (44,045 non-proratable)
- Farm / Stanfield (service area unknown) (1,630 non-proratable)
- Packwood / Ellensburg Power (6,231 non-proratable)
- Tjossem (service area unknown) (4,771 non-proratable)
- Vertrees (unknown)
- West Side including Krake / Ellison-Britton (32,726 non-proratable)
- Younger (service area unknown) (3,010 non-proratable)

Proratable Water Rights by Irrigation District or Entity*
 Brackets & levels listed in parentheses

- Fogarty & Dyer (3,693 proratable)
- Kittitas Reclamation District (336,000 proratable)
- Woldale (Olsen) (12,973 proratable)
- Thorp Mill Ditch including Town Ditch** (7,530 proratable)
- Vertrees (unknown)
- West Side including Krake / Ellison-Britton (8,200 proratable)

Farmland Soils
 Derived from the USDA Natural Resource Conservation Service (NRCS) 2006 SSURGO database

- Prime Farmland
- Prime Farmland if Irrigated
- Prime Farmland if Irrigated & Drained
- Farmland of Statewide Importance
- Other Soils Less Suitable for Agriculture

*The data provided by the Kittitas Reclamation District (KRD) is in draft form and should not be used for decisions on the use of specific tracts of land unless the data is provided "as is" without warranty of any kind. Further, the KRD does not warrant, guarantee, or make any representation regarding the use of or results from the use of the data in terms of correctness, accuracy, reliability, completeness, or otherwise.

**Intentional information provided by this region and is believed to be appropriate.

Map Date: July 23, 2008

0 2 3 4 5 Miles