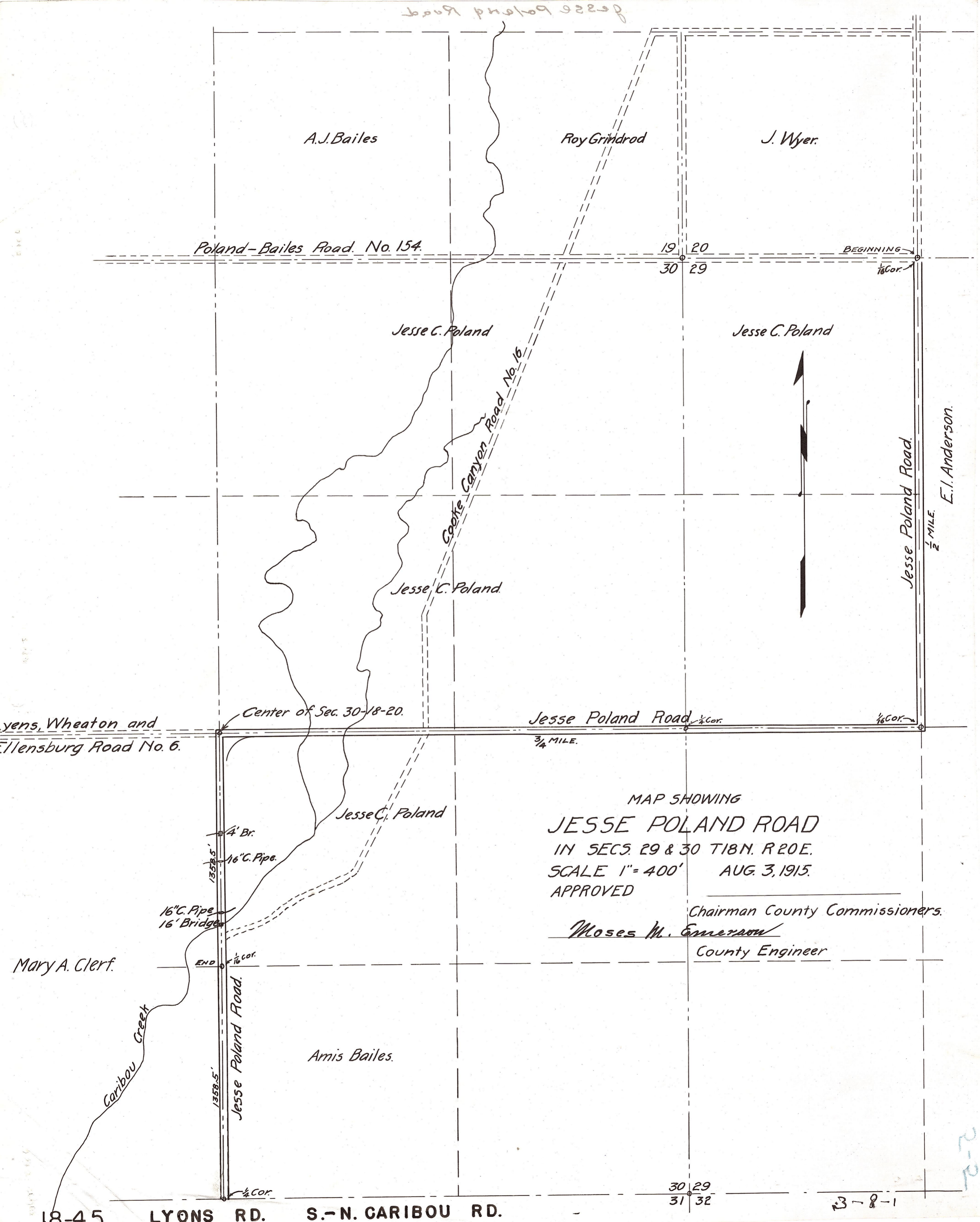


Jesse Poland Road



A.J. Bailes

Roy Grindrod

J. Wyer

Poland-Bailes Road. No. 154.

19 20  
30 29

BEGINNING

1/8 Cor.

Jesse C. Poland

Jesse C. Poland

Cooke Canyon Road No. 16

Jesse C. Poland

Jesse Poland Road.

E.I. Anderson.

1/2 MILE.

Wheats, Wheaton and Ellensburg Road No. 6.

Center of Sec. 30-18-20.

Jesse Poland Road 1/4 Cor.

1/8 Cor.

3/4 MILE.

MAP SHOWING

JESSE POLAND ROAD

IN SECS. 29 & 30 T18N. R20E.

SCALE 1" = 400' AUG. 3, 1915.

APPROVED

Chairman County Commissioners.

Moses M. Emerson

County Engineer

Mary A. Clerf.

16" C. Pipe  
16' Bridge

4' Br.  
16" C. Pipe.

Caribou Creek

Jesse Poland Road.

Amis Bailes.

END 1/16 Cor.

30 29  
31 32

3-8-1

18-45 LYONS RD. S.-N. CARIBOU RD.

2-2