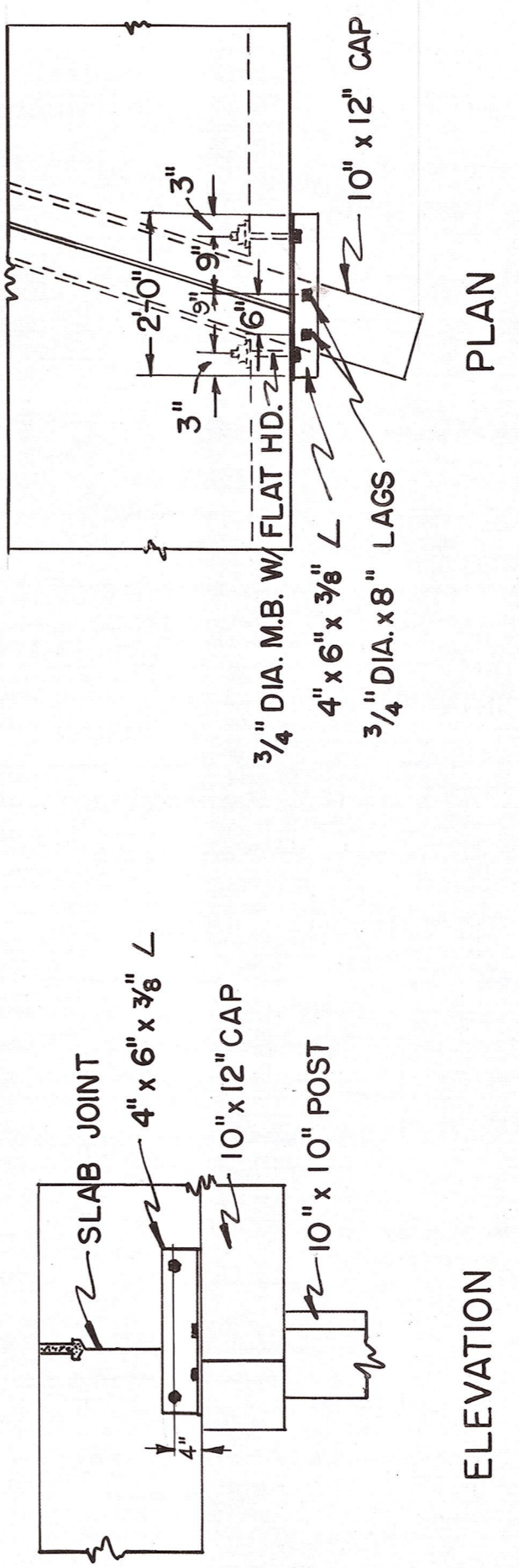


NOTE — ALL "X" BRACING SHALL BE FASTENED AT EACH END WITH ONE 3/4" DIA. FLAT HEAD BOLT WITH MALLEABLE WASHERS AND TWO 3/8" x 8" BOAT SPIKES. INTERMEDIATE POINTS TO BE FASTENED WITH TWO 3/8" x 8" SPIKES.

DRILL SILL TO RECEIVE EXISTING ANCHOR BOLTS AT ALL BRIDGES.



OFFICE OF COUNTY ROAD ENGINEER
KITITAS COUNTY
ELLENSBURG, WASHINGTON
HILINE CANAL BRIDGES
F.A.S.-0563(2)

BRIDGE NO. 95021
SCALE: AS SHOWN CRP 9-61

DRAWN BY MFG DATE: JUNE, 1961 SHEET 2 OF 6
APPROVED: JUNE 26, 1961 DATE
COUNTY ROAD ENGINEER



SUMMARY OF QUANTITIES

ITEM NO.	BR. NO.	ITEM	BR. NO.		BR. NO.		BR. NO.		TOTAL QUANTITY		UNIT
			95021	95011	96082	96091	L. S.	L. S.	L. S.	L. S.	
1	95021	REMOVING EXISTING TIMBER STRUCTURES (4)									L. S.
2	95011	TREATED TIMBER	3	6	3	3					M B M
3	96082	PRECAST REINF. CONC. DECK SLABS									L. S.
4	96091	GUARD RAIL	132	206	132	132					LIN. FT.

BRIDGE NO. 95021 STA. 81+51.36 TO 82+16.64
 BRIDGE NO. 95011 STA. 123+02.87 TO 124+07.52
 BRIDGE NO. 96082 STA. 241+49.34 TO 242+15.46
 BRIDGE NO. 96091 STA. 283+73.38 TO 284+39.42

PROJECT LIMITS
 65.28 FT. TOTAL LENGTH
 104.65 FT.
 66.12 FT.
 66.04 FT. 0.057 MILE

NOTE: FOR SPECIAL FEATURES, SEE SPECIAL PROVISIONS.

GENERAL NOTES

ALL MATERIALS AND WORKMANSHIP SHALL BE IN ACCORDANCE WITH THE REQUIREMENTS OF THE STATE OF WASHINGTON, DEPARTMENT OF HIGHWAYS, STANDARD SPECIFICATIONS FOR ROAD AND BRIDGE CONSTRUCTION, DATED JULY, 1957 AND THE ATTACHED SPECIAL PROVISIONS.

LOCATION, ELEVATIONS, ANGLES, AND ALL DIMENSIONS OF EXISTING ABUTMENTS AND FOOTINGS ARE TO BE CHECKED IN THE FIELD BEFORE PRECAST CONCRETE DECK UNITS ARE CAST. IT SHALL BE THE SOLE RESPONSIBILITY OF THE CONTRACTOR TO SEE THAT ALL DIMENSIONS ARE CHECKED IN THE FIELD BEFORE ORDERING MATERIALS.

GROUT TO BE FURNISHED BY THE CONTRACTOR WILL BE IN ACCORDANCE WITH SECTION 42-309 OF THE STANDARD SPECIFICATIONS.

ALL LUMBER AND TIMBER SHALL BE CONSTRUCTION GRADE DOUGLAS FIR COAST REGION NO. 1 S4S.

ALL LUMBER AND TIMBER, EXCEPT THAT USED IN THE CURB AND GUARD RAIL, SHALL BE TREATED BY THE EMPTY CELL PROCESS TO PROVIDE A MINIMUM RETENTION OF 10 POUNDS OF CREOSOTE OIL IN ACCORDANCE WITH THE STANDARD SPECIFICATIONS. THE LUMBER USED IN THE CURB AND GUARD RAIL ASSEMBLY SHALL RECEIVE A WOLMAN SALT TREATMENT WITH A MINIMUM RETENTION OF 0.55 LB. PER CU. FT. IN ACCORDANCE WITH THE STANDARD SPECIFICATIONS.

ALL HARDWARE SHALL BE GALVANIZED (A.S.T.M. DESIGNATION A-153).



W. S. S.
 DIRECTOR OF HIGHWAYS
 SHEETS 1 TO 6 INCL.
 APPROVED JULY 25, 1961



APPROVED THIS 26 DAY OF JUNE, 1961, BY THE BOARD OF KITTITAS COUNTY COMMISSIONERS.
 JOE MCMANAMY, CHAIRMAN

OFFICE OF COUNTY ROAD ENGINEER
KITTITAS COUNTY
 ELLENSBURG, WASHINGTON
 HILINE CANAL BRIDGES
 F. A. S. - 0563(2)
 LOCATION SHEET
 SCALE: AS SHOWN CRP 9-61
 DRAWN BY MFG DATE JUNE, 1961 SHEET 1 OF 6
 APPROVED: JUNE 26, 1961
 COUNTY ROAD ENGINEER

