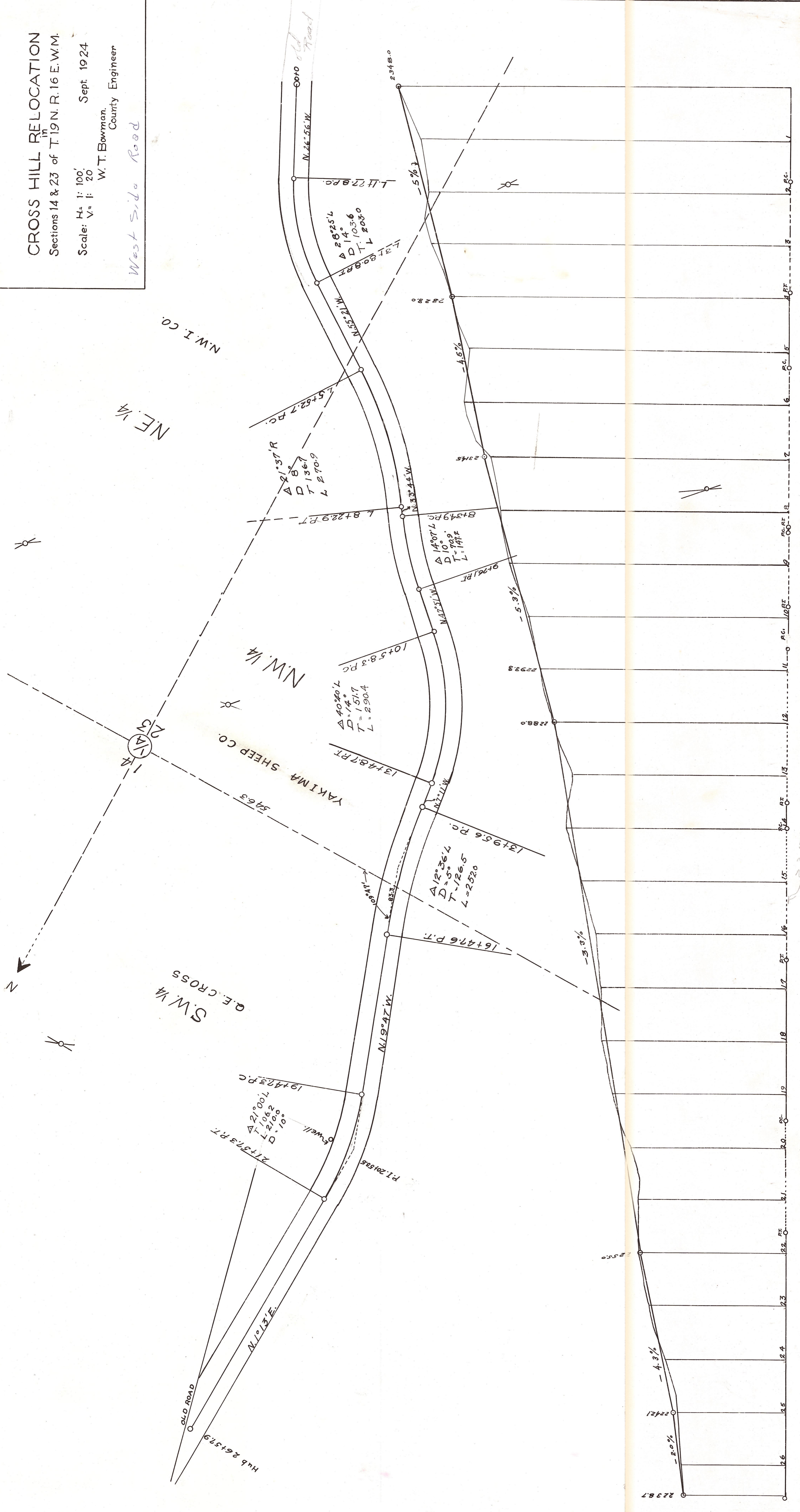


CROSS HILL RELOCATION
 Sections 14 & 23 of T.19N. R.16 E.W.M.

Scale: H^s: 1" = 100'
 V^s: 1" = 20'

Sept. 1924
 W. T. Bowman,
 County Engineer

West Side Road



15-9-A

THORP PRAIRIE RD.
 25-16

36-8-1