

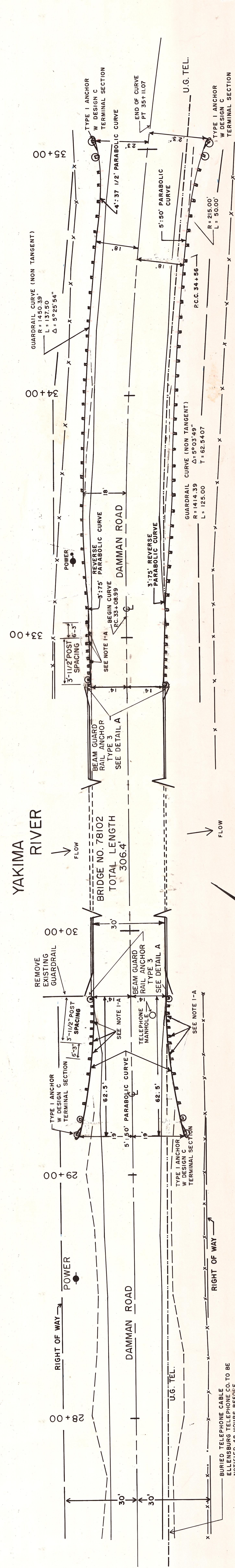
SCALE 1" = 20'

**NOTES**  
 I-A POST SIZE & SPACING  
 3 - 10"x10" @ 3'-1 1/2"  
 3 - 8"x8" @ 3'-1 1/2"  
 FOLLOWED BY  
 8"x8" @ 6'-3"

**QUANTITIES**

TYPE 1 GUARDRAIL 5000 LINEAL FT. INCLUDING TERMINAL SECTIONS	1 EACH
WEAKPOST W-BEAM GUARDRAIL ANCHORAGE	3 EACH
TYPE 1 ANCHOR	4 EACH
TYPE 3 ANCHOR	4 EACH

**THORP HIGHWAY  
 UPPER RIVER BRIDGE NO. 88333**



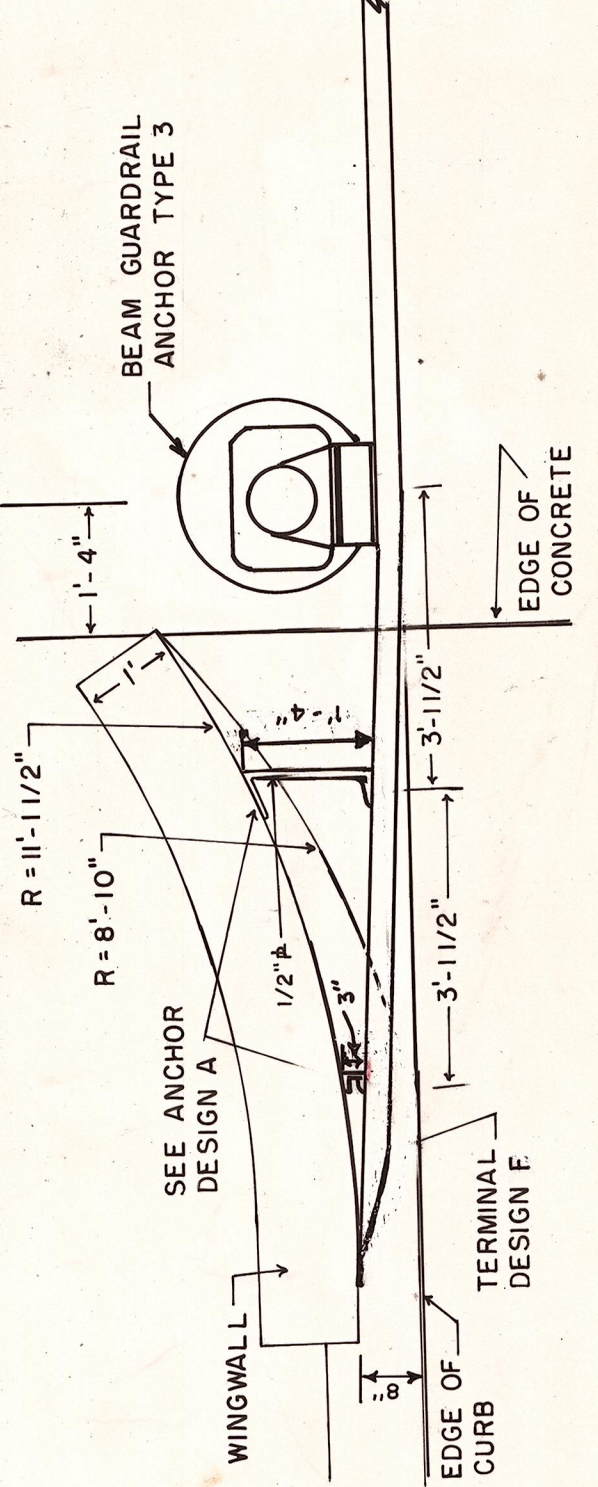
SCALE 1" = 20'

**QUANTITIES**

TYPE 1 GUARDRAIL 612 LINEAL FT. INCLUDING TERMINAL SECTIONS	4 EACH
TYPE 1 ANCHOR	4 EACH
TYPE 3 ANCHOR	4 EACH

**DAMMAN ROAD  
 BRIDGE NO. 79102**

SCALE 1/2" = 1'



**Q CURVE DATA**  
 R = 1432.39  
 L = 202.08  
 T = 101.20  
 Δ = 8° 05'  
 L.L. = 201.92



**DEPT. OF PUBLIC WORKS  
 KITTITAS COUNTY  
 ELLENSBURG, WASHINGTON  
 THORP HIGHWAY BRIDGE ET. AL.  
 APPROACH GUARDRAILS**

SCALE: H 1" = 20'  
 DRAWN BY DLT DATE SEPT. 1981 SHEET 7 OF 14  
 APPROVED: 4/27/83 DATE DIRECTOR OF PUBLIC WORKS