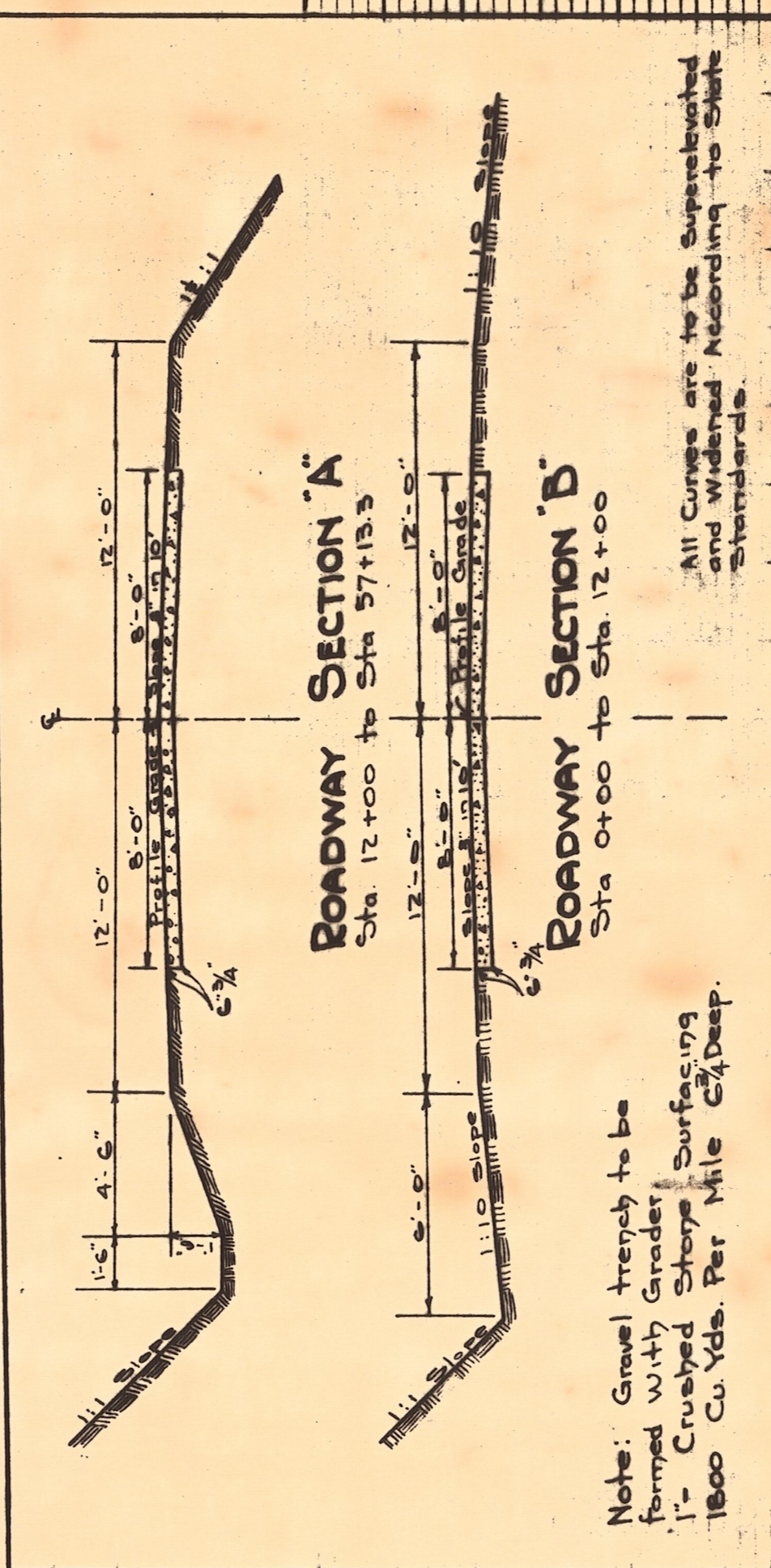
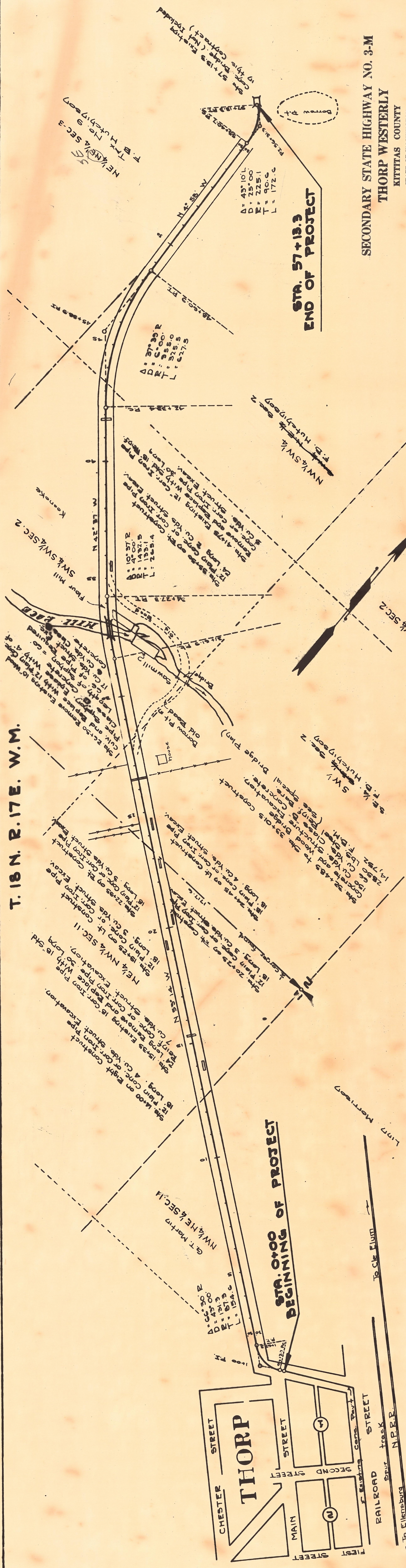


Sec. Hwy. 3-M



Note: Gravel trench to be formed with Grader Surfacing
 1- Crushed Stone Surfacing
 1800 Cu. Yds. Per Mile 6% Deep.

All Curves are to be Super-elevated and Widened According to State Standards.

SECONDARY STATE HIGHWAY NO. 3-M
 THORP WESTERLY

KITTITAS COUNTY
 STATE OF WASHINGTON
 DEPARTMENT OF HIGHWAYS
 OLYMPIA, WASHINGTON

SCALE: HORIZ. 1 INCH = 200 FEET
 SCALE: VERT. 1 INCH = 20 FEET
 APPROVED: Sept. 16, 1949



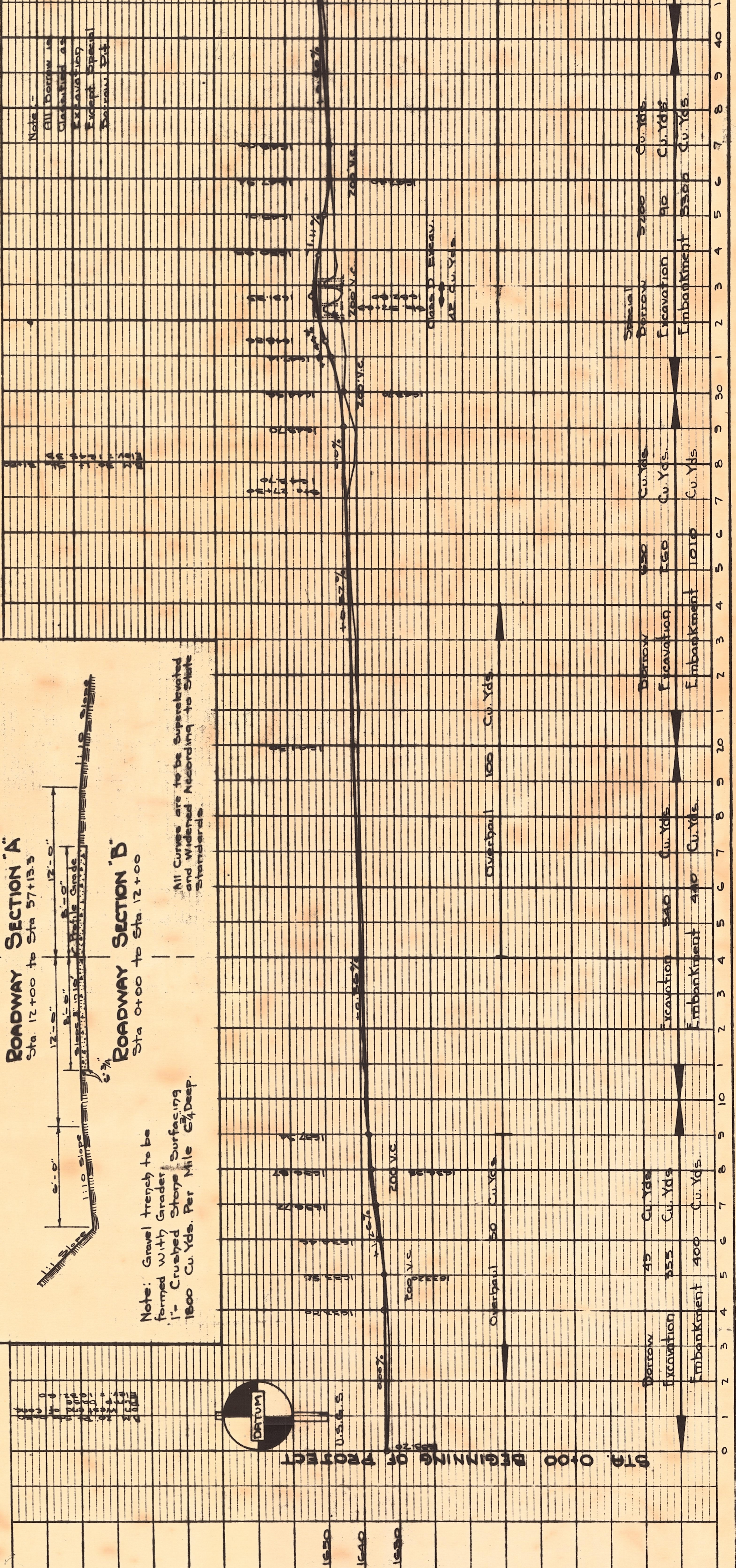
W. A. Bugey
 DIRECTOR OF HIGHWAYS

SHEET 1 OF 1 SHEETS
 CONTRACT NUMBER

12

SUMMARY

ITEM	QUANTITY	UNIT
Special Borrow	3200	Cu. Yds.
Excavation	2400	Cu. Yds.
Structure Excavation	240	Cu. Yds.
Overhaul x 100'	1900	Cu. Yds.
Pliny Conc. or Corr. Iron Pipe 12"	180	Lip. Ft.
3rd. Class Conc. or Corr. Iron Pipe 18"	60	Lip. Ft.
Crushed Stone Surfacing	1800	Cu. Yds.
Class 'B' Concrete	6	Cu. Yds.
Class 'D' Excavation	42	Cu. Yds.
Concrete Class 'B'	66	Cu. Yds.
Lumber	14750	F.B.M.
Reinforcing Bars	2450	Lbs.
Structural Excavation	150	Cu. Yds.



PROFILE

NO.	DATE	BY
NOTE BOOK 8 IS NOTED		
STRUCTURE NOTES AS CHD.		
PLOTTED		
CHECKED		
DATE		

PLAN

NO.	DATE	BY
NOTE BOOK 8 IS NOTED		
ALIGNMENT CHECKED		
PLOTTED		
CHECKED		
DATE		