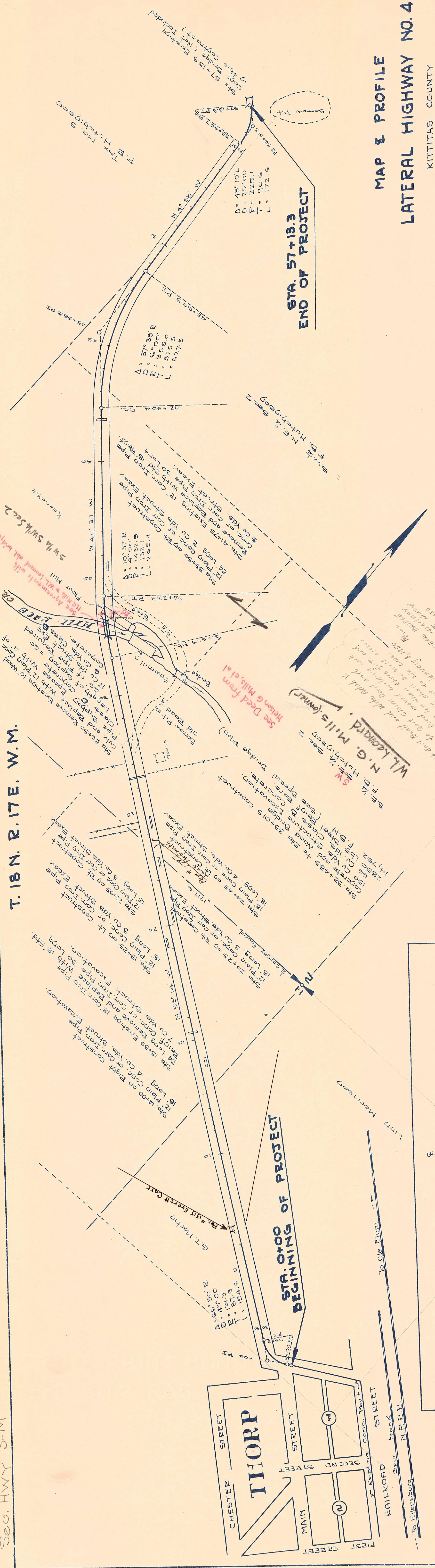


Sec. Hwy 3-M

T. 18 N. R. 17 E. W.M.



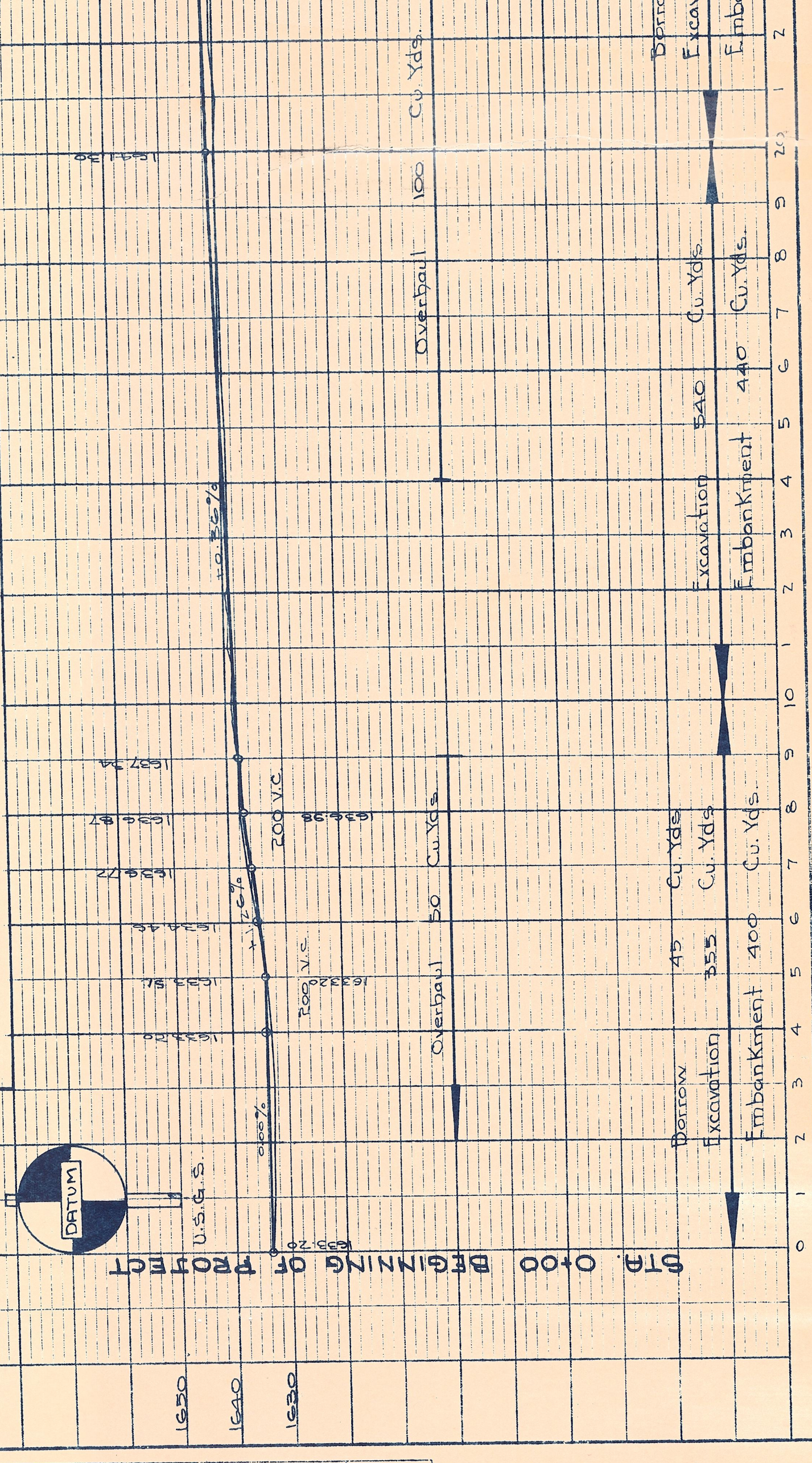
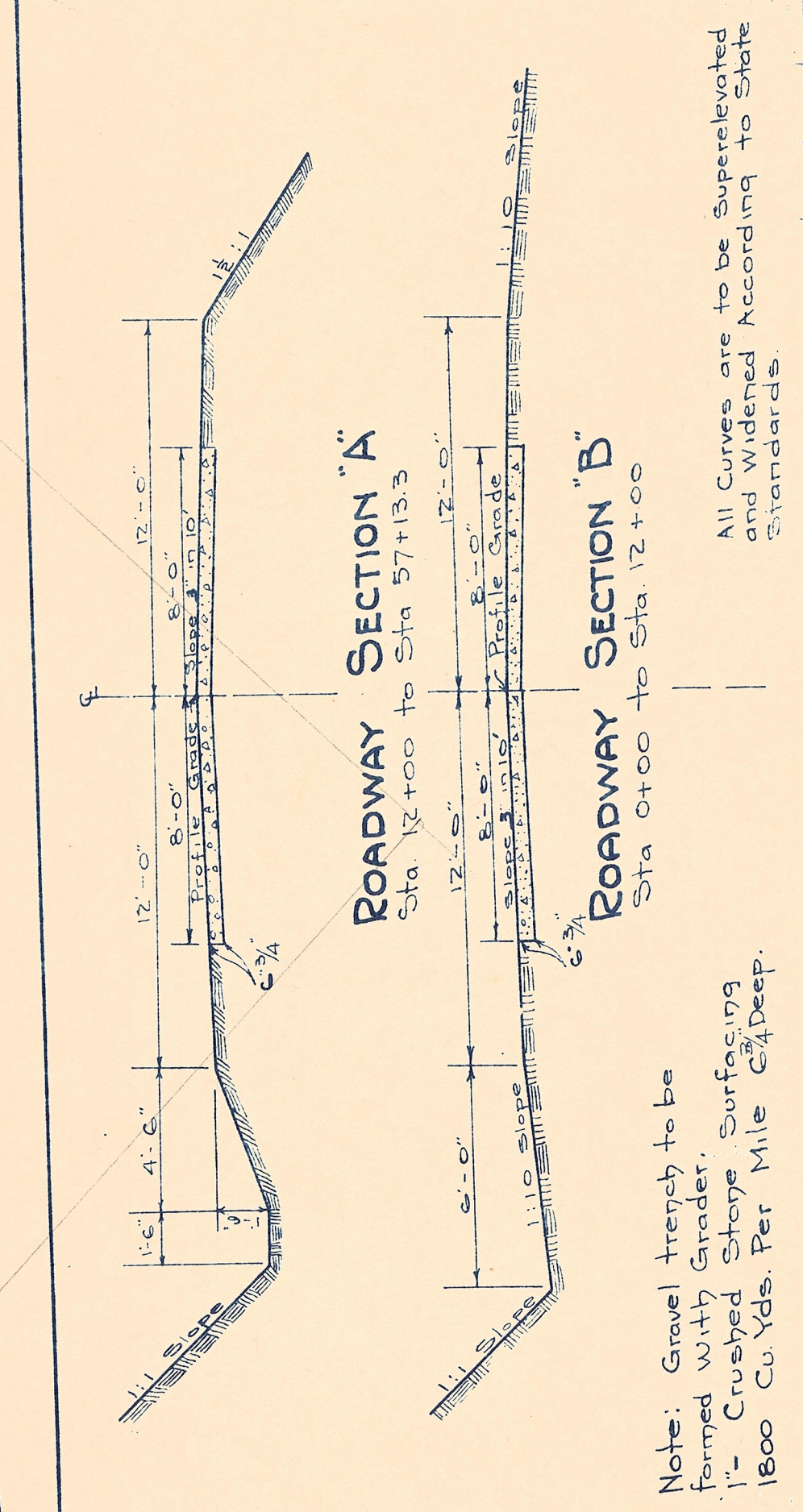
MAP & PROFILE
LATERAL HIGHWAY NO. 4
KITKITAS COUNTY

APPROVED:
SCALE: Horiz. 1 inch = 200 Ft. Vert. 1 inch = 20 Ft.

Sheet 1 of 2 sheets

STATION	100 Miles
57+13.3	3200
	341m
	48
	1350
	180
	60
	1900
	6
	42
	66
	14750
	2850
	150

STATION	100 Miles
57+13.3	3200
	341m
	48
	1350
	180
	60
	1900
	6
	42
	66
	14750
	2850
	150



STATION	Excavation	Embankment	Borrow
0+00 to 12+00	355	400	45
12+00 to 57+13.3	1200	1210	650
57+13.3 to 60+00	90	3300	3200
60+00 to 65+00	1700	1450	200

DATE	BY	DATE	BY

NO.	NOTE	NO.	NOTE