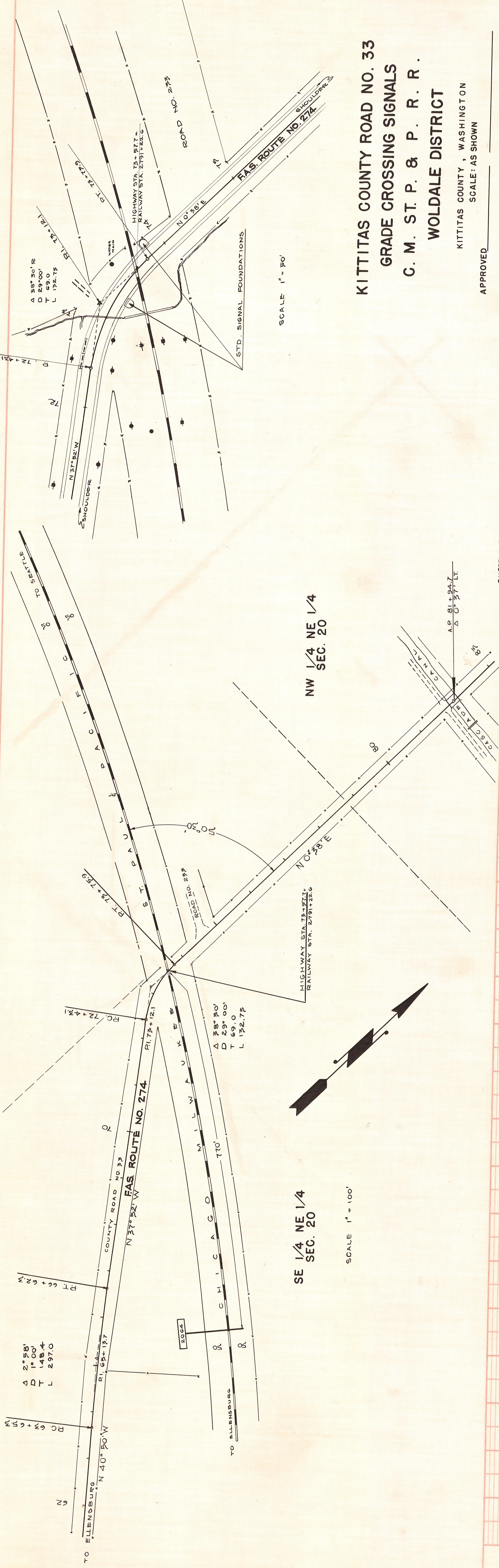


T. 18N. R. 18E. W.M.



**KITTITAS COUNTY ROAD NO. 33
GRADE CROSSING SIGNALS
C. M. ST. P. & P. R. R.
WOLDALE DISTRICT**

KITTITAS COUNTY, WASHINGTON
SCALE: AS SHOWN

APPROVED

SHEET 1 OF 1 SHEETS

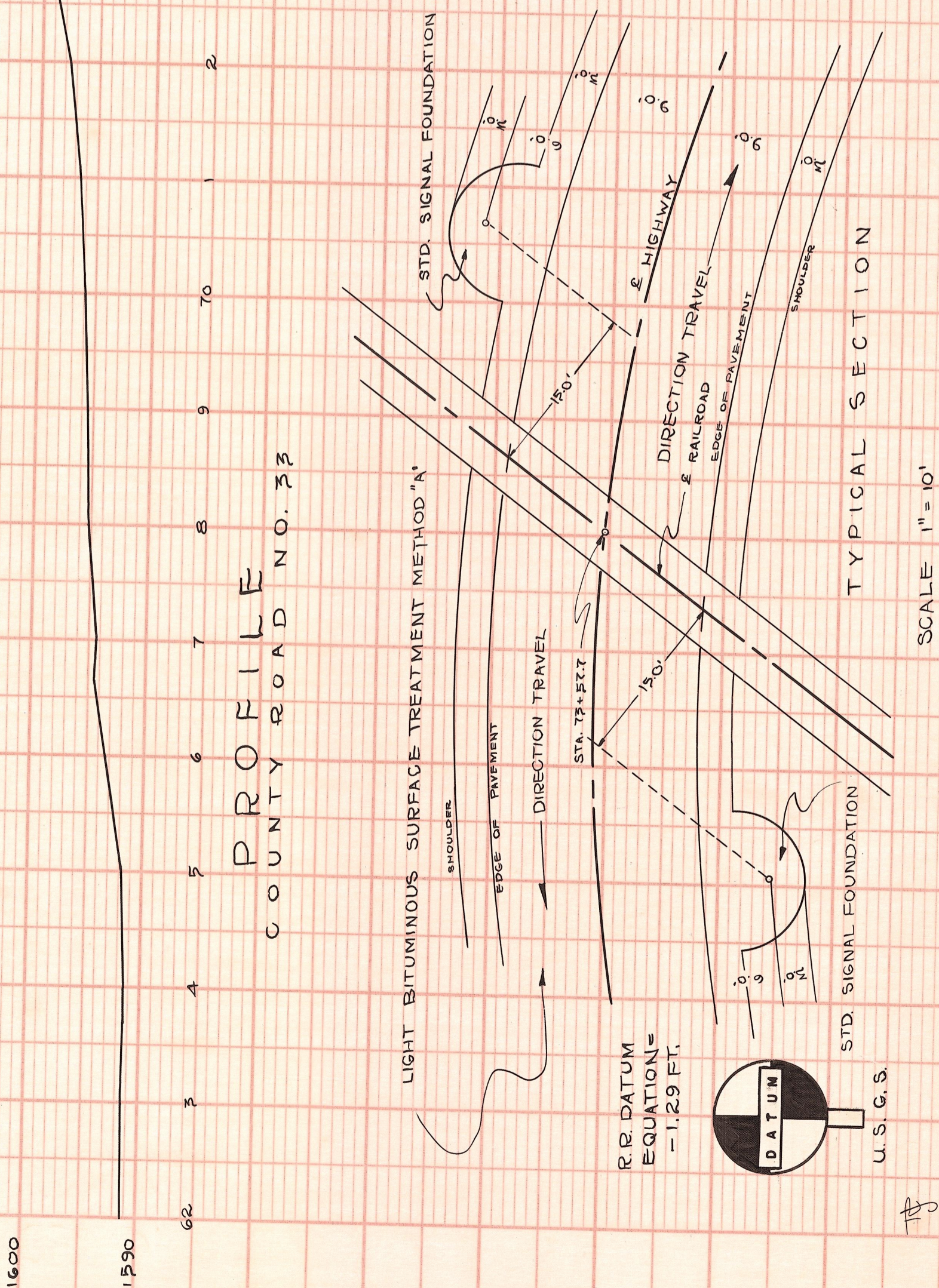
HIGHWAY STA. 73+217 =
RAILWAY STA. 2791+22.6

HIGHWAY STA. 1599.17
RAILWAY ELEV. 1597.88

BASE OF RAIL
U.S.G.S. ELEV. 1599.17
RAILWAY ELEV. 1597.88

SUMMARY OF QUANTITIES
2 ONLY HIGHWAY CROSSING SIGNALS - AUTOMATIC FLASHING LIGHTS WITH ILLUMINATED STOP SIGNS.

PROFILE
COUNTY ROAD NO. 33



ON LEFT OF HIGHWAY

ON RIGHT OF HIGHWAY

RAILWAY STA. 2791+22.6
HIGHWAY STA. 73+217
GRADE CROSSING

OUTSIDE

INSIDE

RAIL

RAIL

TO SEATTLE

TO ELLENBURG

RAILWAY PROFILE
(TOP OF RAIL)

SCALE 1" HORIZ. = 100'
1" VERT. = 10'

15-2-9

STATE HWY. 2-I 22-39

PLATE 1-PLAN-PROFILE & P. & R. STANDARD
THE FREDERICK POST CO., CHICAGO

PLAN	SURVEYED	DATE	BY
NOTE BOOK	ALIGNED CHECKED	RT. OF WAY CHECKED	NO.

PROFILE	SURVEYED	DATE	BY
NOTE BOOK	ALIGNED CHECKED	RT. OF WAY CHECKED	NO.