

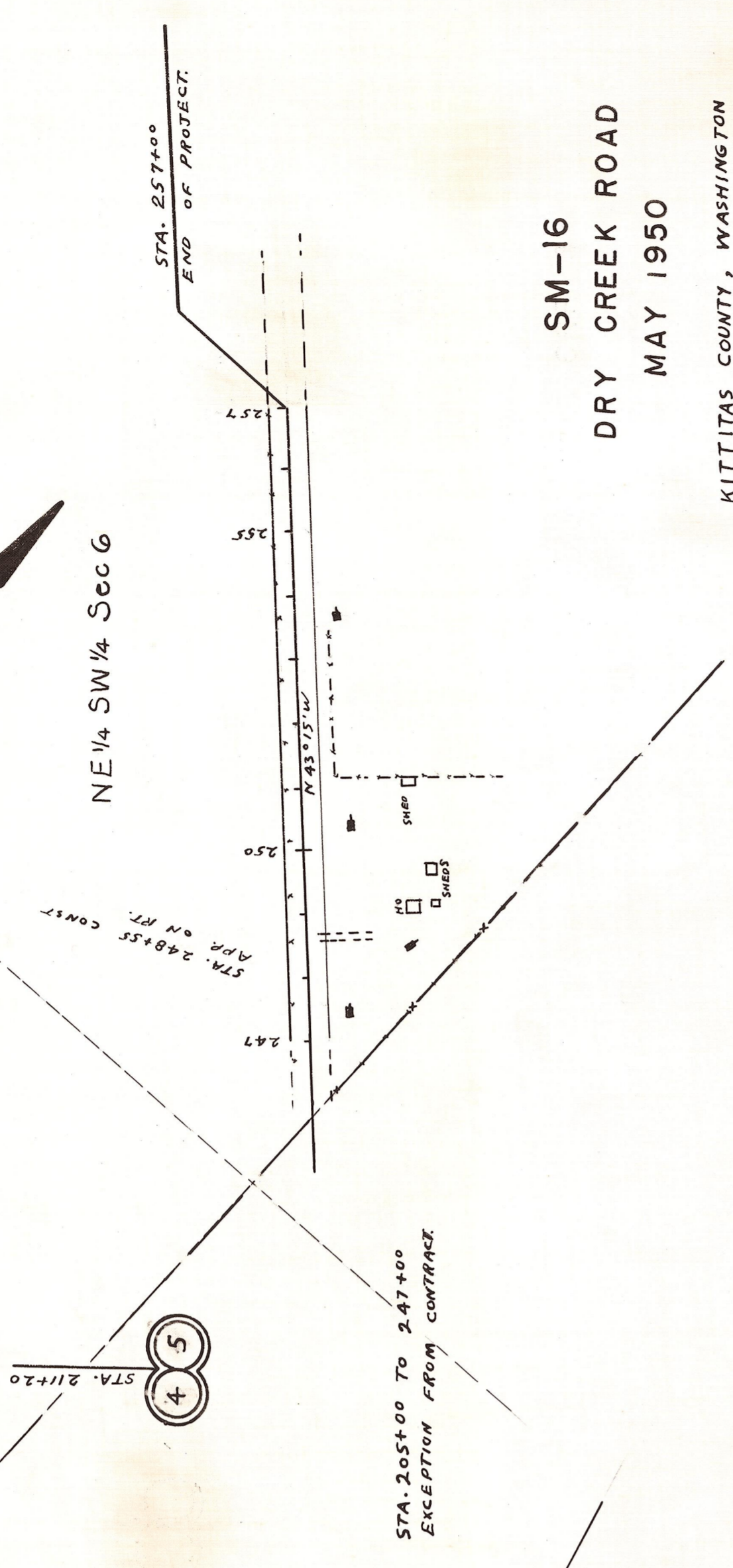
T18N R18E.W.M.

NE 1/4 SE 1/4 Sec 7

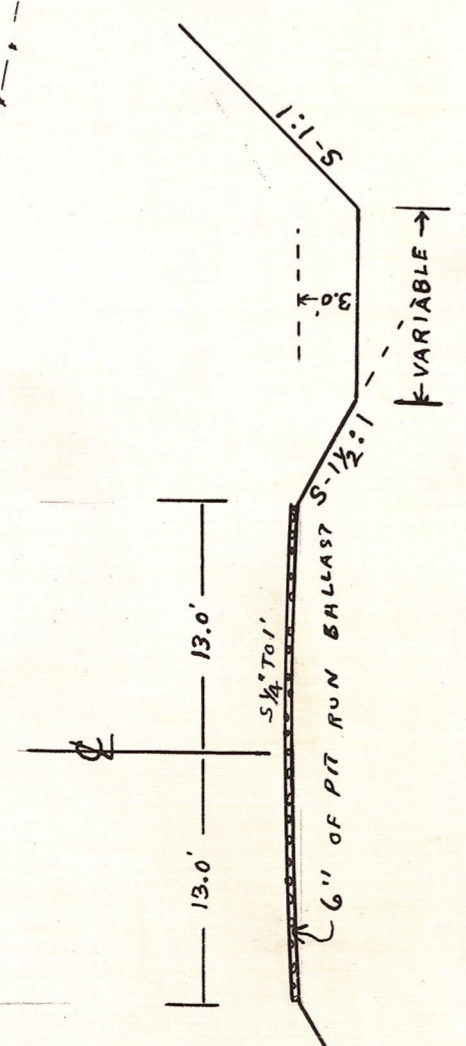
SE 1/4 NE 1/4 Sec 7

NW 1/4 SW 1/4 Sec 8

SW 1/4 NW 1/4 Sec 8



ROADWAY SECTION
SCALE 1"=10'
GRADING, DRAINING
BALLAST



SM-16
DRY CREEK ROAD
MAY 1950

KITTITAS COUNTY, WASHINGTON
SCALE:
HORIZONTAL 1" = 200'
VERTICAL 1" = 20'

SHEET 1 OF 1 SHEETS

APPROVED:
COUNTY ROAD ENGINEER
CHAIRMAN BOARD OF COUNTY COMMISSIONS

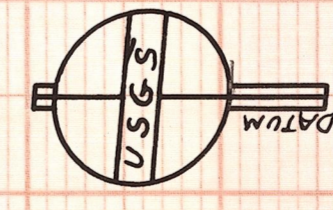
B.M. STA. 244+95
SPINE IN P. POLE ON RT.
EL. 1810.87

B.M. STATION 185+80
SPINE IN P. POLE ON RT.
EL. 1724.51

B.M. STATION 200+80
SPINE IN P. POLE ON RT.
EL. 1749.84

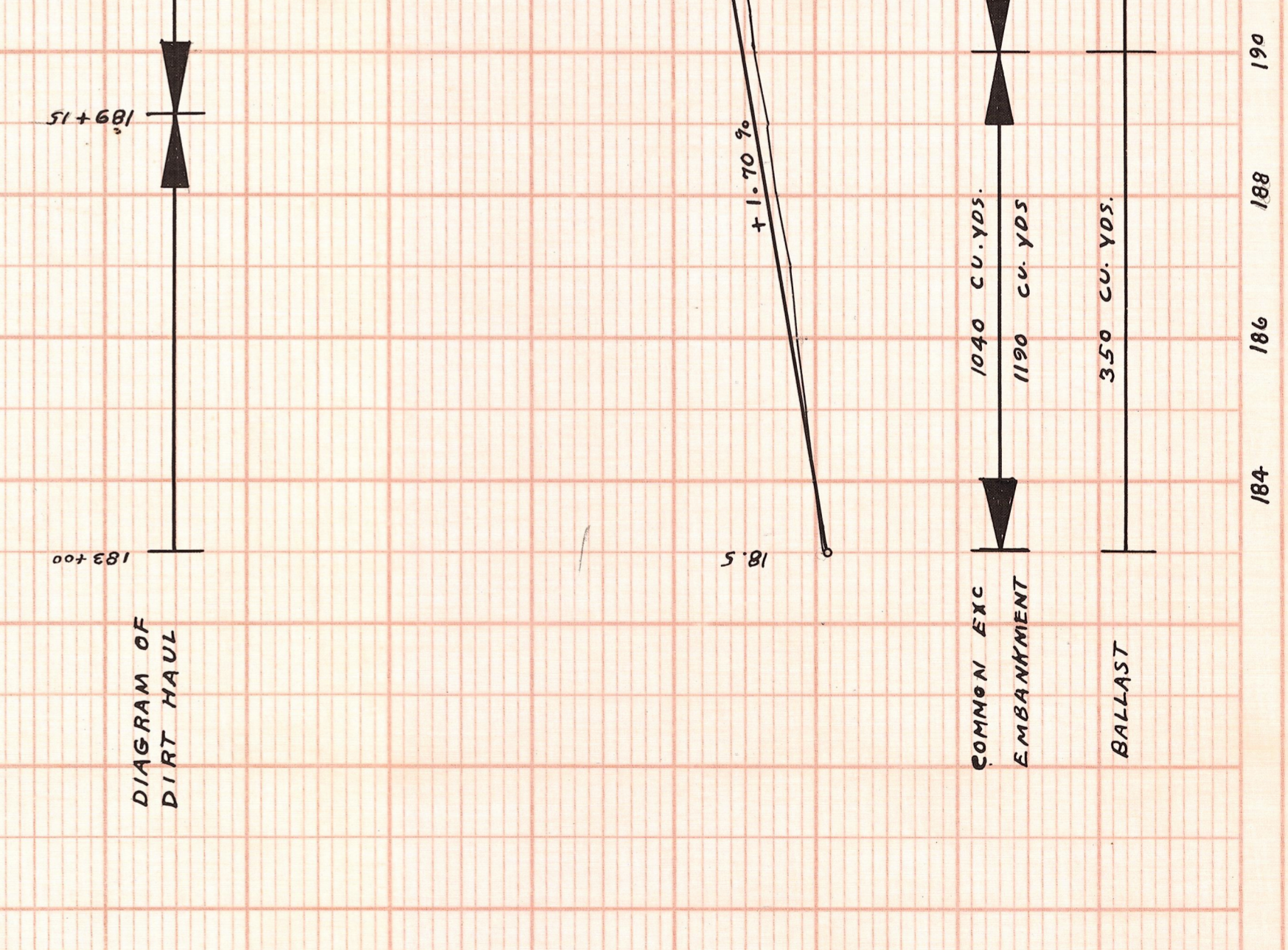
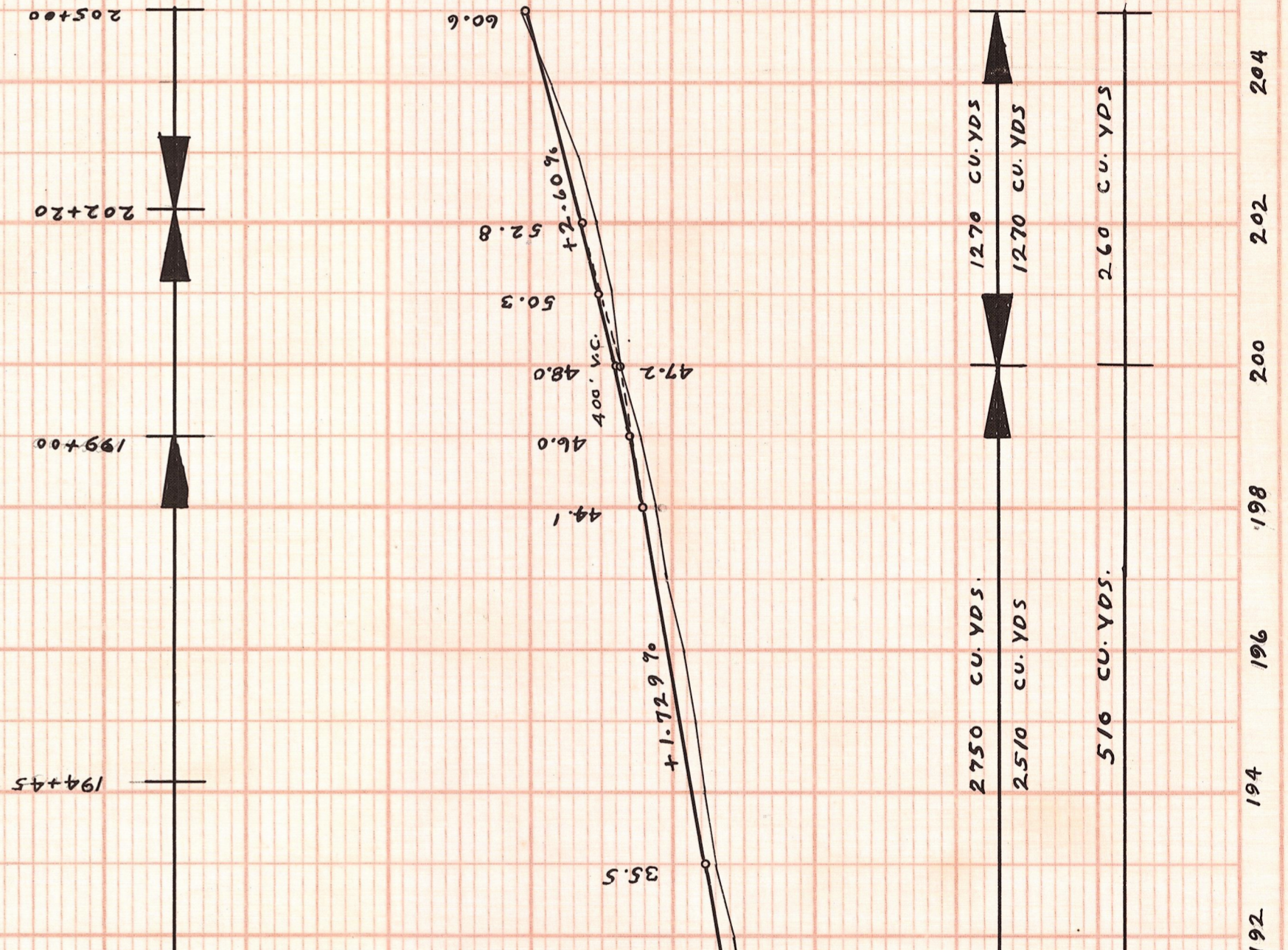
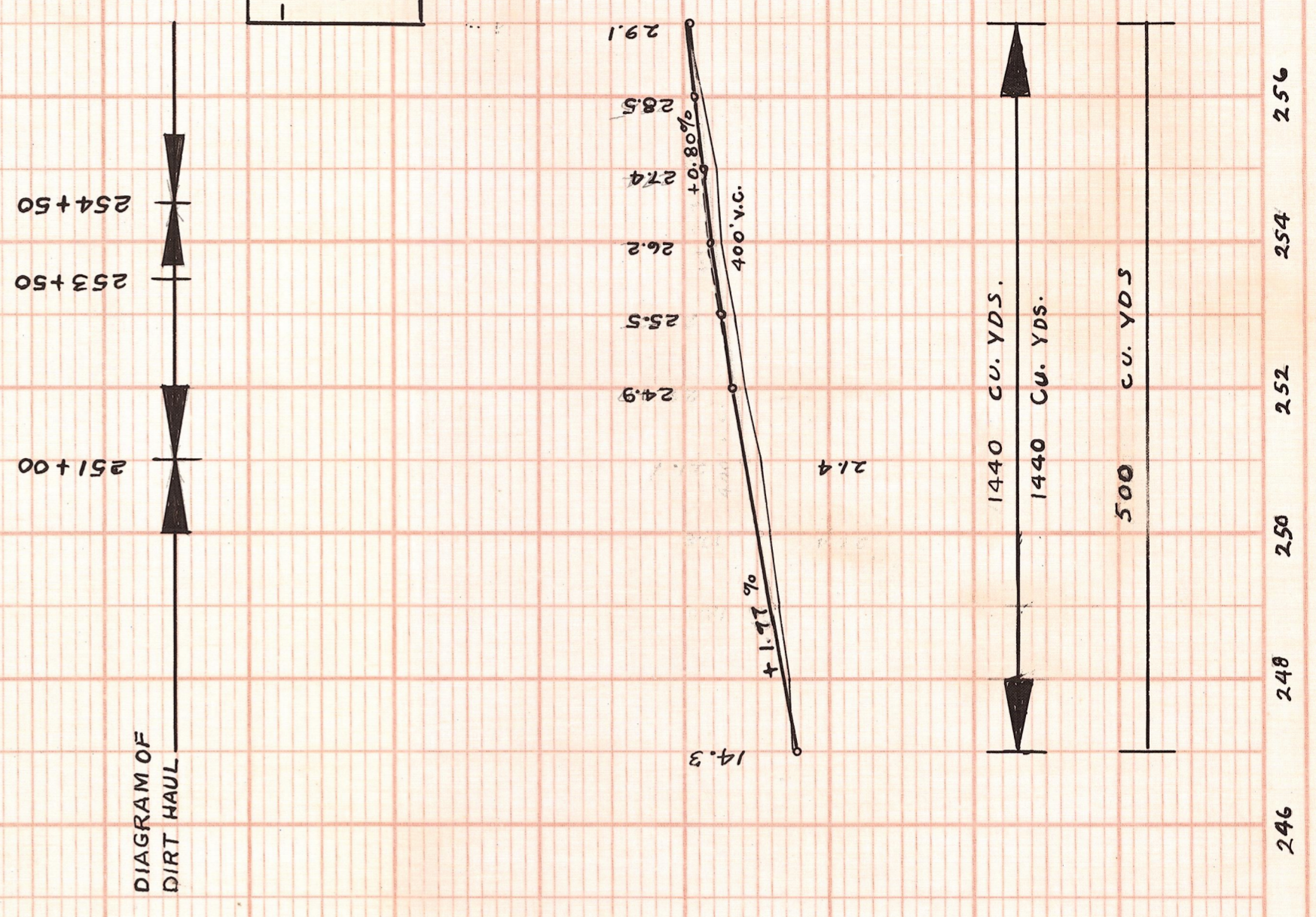
DIAGRAM OF
DIRT HAUL

DIAGRAM OF
DIRT HAUL



SUMMARY OF QUANTITIES

MILE 4 (PART) MILE 5 (PART)	32 STA.
TEAR UP EXISTING OIL SURFACE	6500 CU. YDS.
COMMON EXC.	50 LIM. FT
18" CORR. IRON CULVERT	1020 CU. YDS.
PIT RUN BALLAST	



DATE	BY	PLAN
		NOTED
		PLANNED
		FLIGHT
		NOTE BOOK
		BY
		DATE

DATE	BY	PROFILE
		NOTED
		PLANNED
		FLIGHT
		NOTE BOOK
		BY
		DATE

15-2-6

STATE HWY. 2-I 22-38

PLATE 1-PLAN-PROFILE S. P. & S. STANDARD THE FERRIS POST CO., CHgo