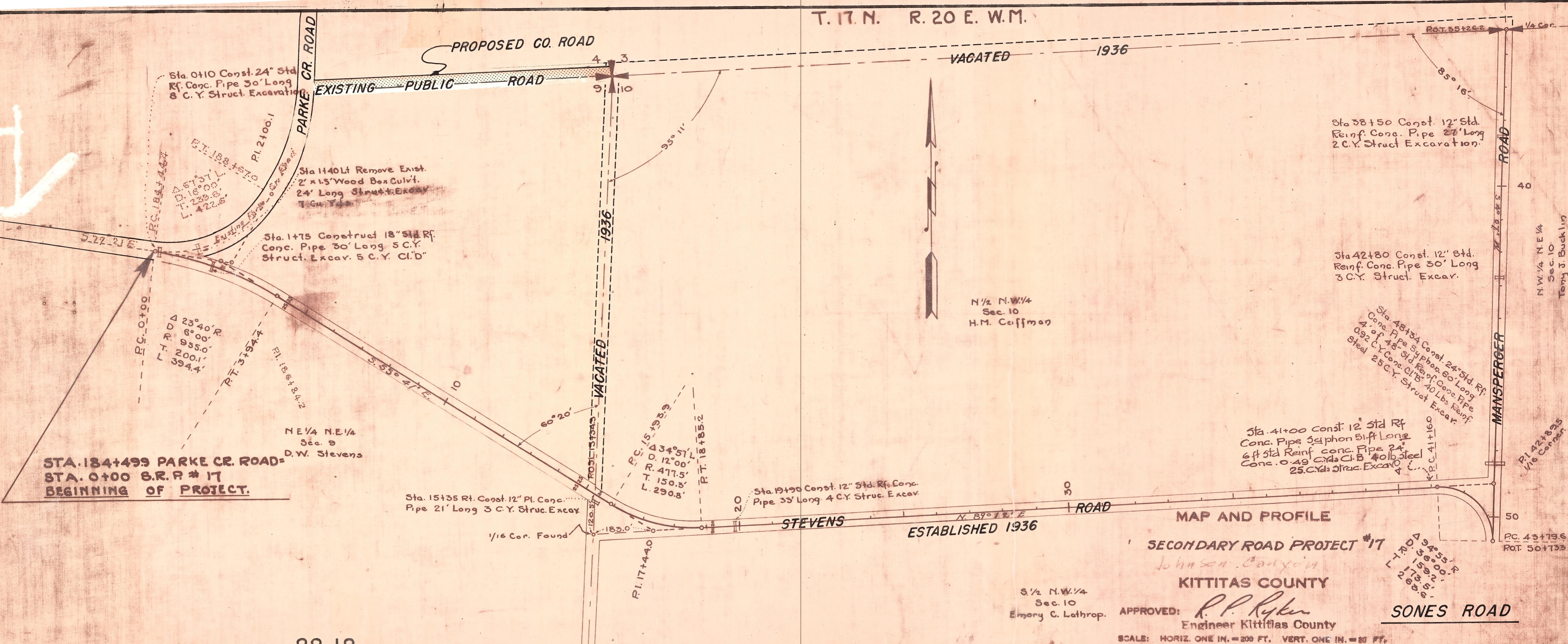


T. 17 N. R. 20 E. W.M.



Sta. 0+10 Const. 24" Std. Rf. Conc. Pipe 30' Long  
8 C.Y. Struct. Excavation

PI. 188+570  
PI. 2+00.1

Sta. 1+40 Lt. Remove Exist. 2' x 1.5' Wood Box Culv. 24' Long Struct. Excav. 7 C.Y.

Sta. 1+75 Construct 18" Std. Rf. Conc. Pipe 30' Long 5 C.Y. Struct. Excav. 5 C.Y. Cl. D"

Sta. 38+50 Const. 12" Std. Rf. Conc. Pipe 27' Long  
2 C.Y. Struct. Excavation

Sta. 42+80 Const. 12" Std. Rf. Conc. Pipe 30' Long  
3 C.Y. Struct. Excav.

Sta. 48+54 Const. 24" Std. Rf. Conc. Pipe Siphon 60' Long  
4 of 48" Std. Rf. Conc. Pipe  
0.92 C.Y. Conc. Cl. B 40 Lbs. Rf. Steel  
25 C.Y. Struct. Excav.

Sta. 41+00 Const. 12" Std Rf Conc. Pipe Siphon 51-ft Long  
6 ft Std Rf. Conc. Pipe 24"  
Conc. 0.49 C.Y. Cl. B 40 Lbs. Steel  
25 C.Y. Struct. Excav.

Sta. 19+90 Const. 12" Std. Rf. Conc. Pipe 33' Long 4 C.Y. Struct. Excav.

Sta. 15+35 Rt. Const. 12" Pl. Conc. Pipe 21' Long 3 C.Y. Struct. Excav.

STA. 184+499 PARKE CR. ROAD =  
STA. 0+00 S.R. # 17  
BEGINNING OF PROJECT.

NE 1/4 NE 1/4  
Sec. 9  
D.W. Stevens

N 1/2 N.W. 1/4  
Sec. 10  
H.M. Coffman

N.W. 1/4 NE 1/4  
Sec. 10  
Tony J. Bucklin

MAP AND PROFILE

SECONDARY ROAD PROJECT #17  
Johnson Canyon

KITTITAS COUNTY

APPROVED: *R.P. Ryker*  
Engineer Kittitas County

SONES ROAD

SCALE: HORIZ. ONE IN. = 200 FT. VERT. ONE IN. = 20 FT.