

T. 18 N. R. 19 E. W. M.

URSHEL ROBBINETT

SE 1/4 SW 1/4 SEC. 25

20

WR. BAILES

10

JOHN LUNDQUIST

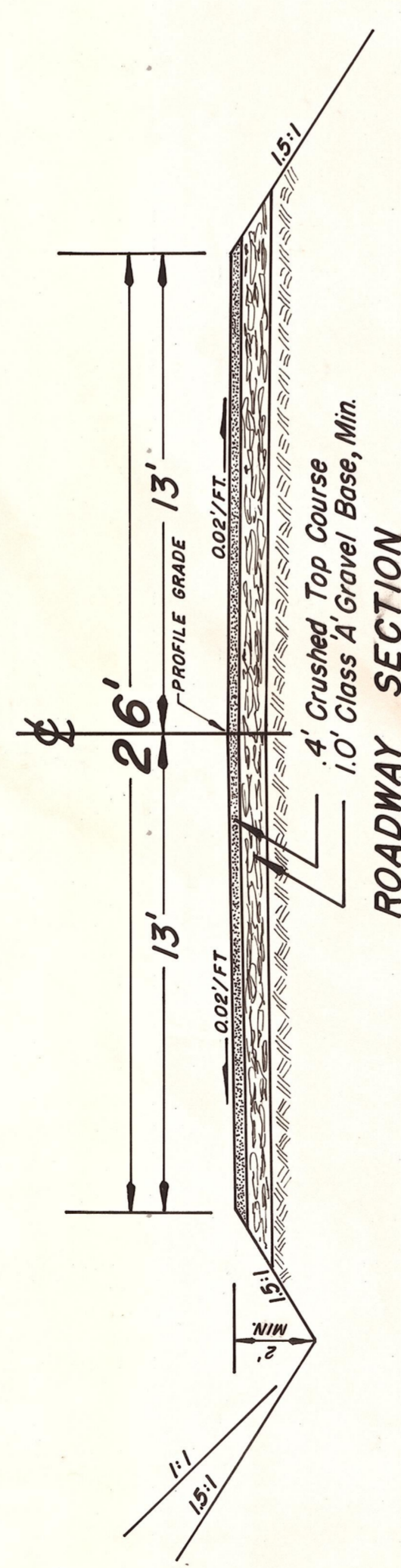
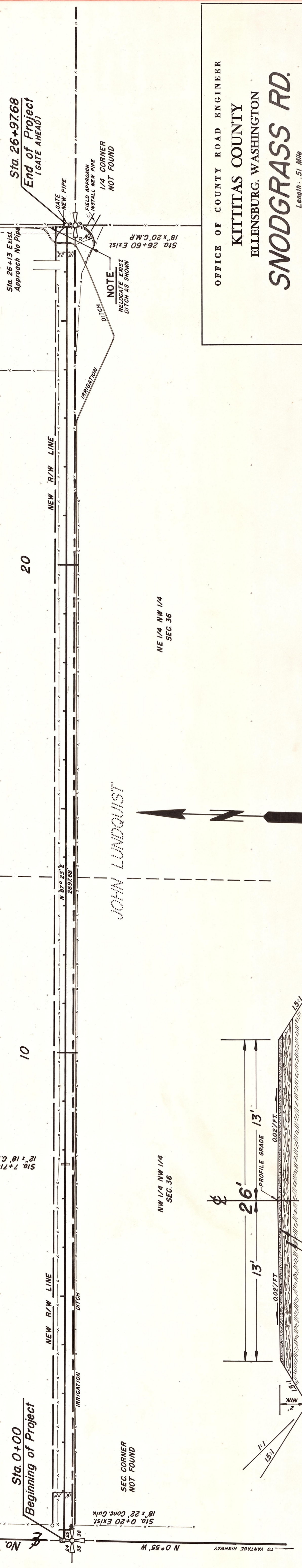
NE 1/4 NW 1/4 SEC. 36

SW 1/4 SW 1/4 SEC. 25

Sta. 0+00 Beginning of Project

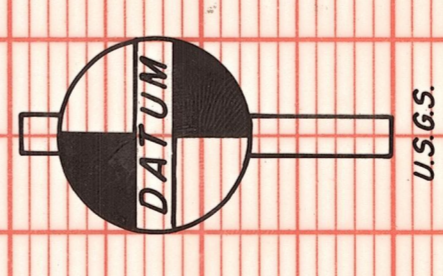
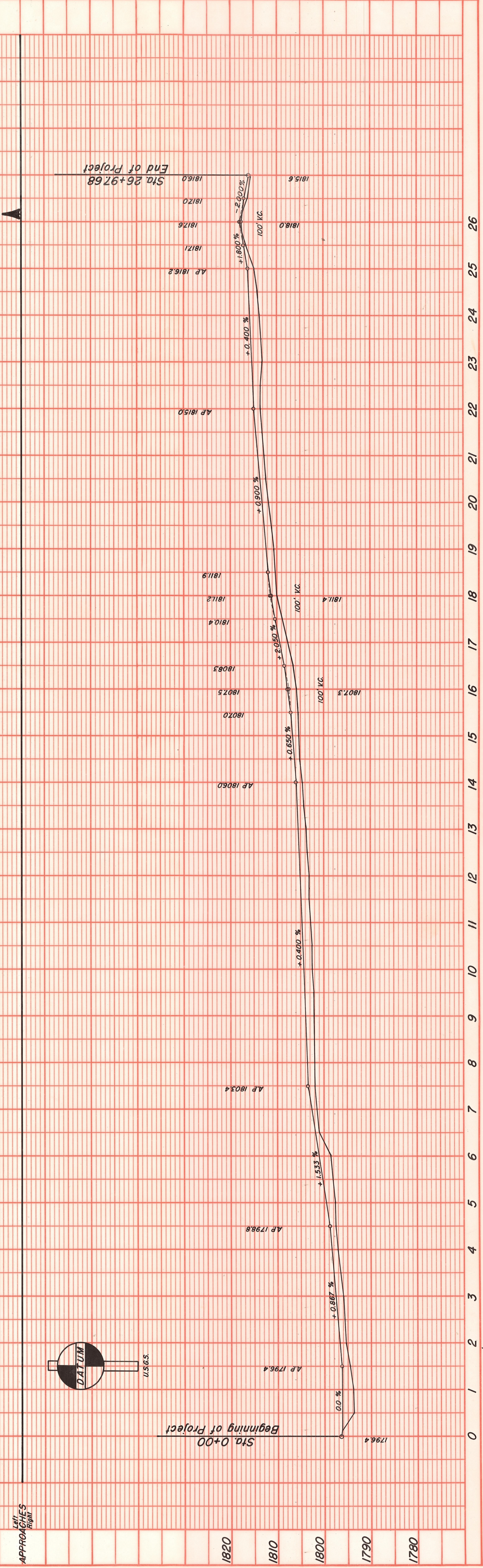
Sta. 26+97.68 End of Project (GATE AHEAD)

No. 81 Road



OFFICE OF COUNTY ROAD ENGINEER
 KITTITAS COUNTY
 ELLENSBURG, WASHINGTON
SNODGRASS RD.
 Length: .51 Mile

SCALE: $H = \frac{1}{2} \times 100'$
 DRAWN BY B.S.
 DATE APRIL, 1970
 SHEET
 APPROVED: 4-23-70
 DATE
 CRP 12-70
 COUNTY ROAD ENGINEER



NO.	DATE	BY	REVISION

NO.	DATE	BY	REVISION