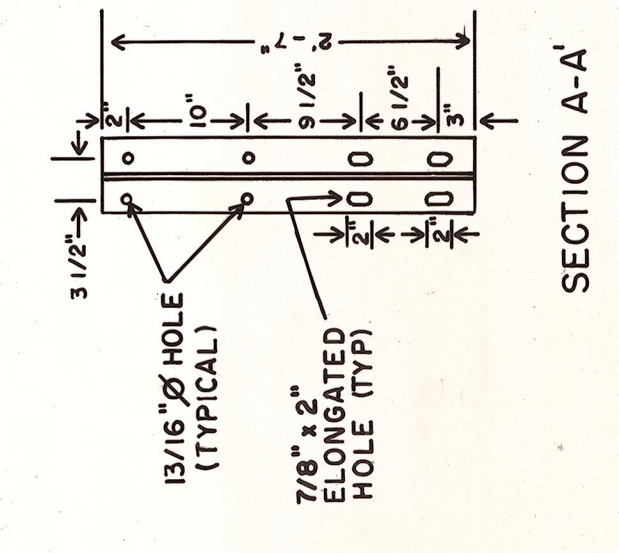
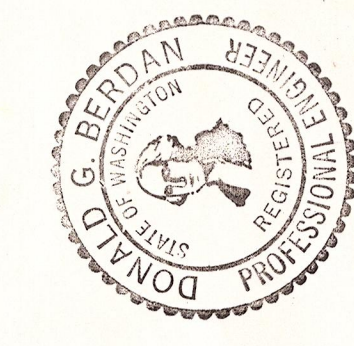


**BRIDGE GUARDRAIL POST TYPE I**



DEPT. OF PUBLIC WORKS  
**KITTITAS COUNTY**  
ELLENSBURG, WASHINGTON  
VANTAGE HIGHWAY BRIDGE ET. AL.  
APPROACH GUARDRAILS

SCALE: H<sup>1</sup>" = 20'  
DRAWN BY DLT DATE SEPT. 1981  
APPROVED: *[Signature]* DATE 4/27/83  
CRP 14-80 SHEET 13 OF 14  
DIRECTOR OF PUBLIC WORKS



**NOTES**

NOTE 1: REMOVE STEEL POST SET IN CONCRETE, AND REPLACE WITH 8"x8" WOOD POST.

NOTE 2: REACH NEW W6x15 BRIDGE RAIL POST TYPE I WITH BLOCKS SEE DETAIL A.

**QUANTITIES**

TYPE I GUARDRAIL INCLUDING TERMINAL SECTIONS	156 LINEAL FT.
DOUBLE BEAM GUARDRAIL	50 LINEAL FT.
TYPE I ANCHOR W/DESIGN C POSTS INSTALLED	8 EACH
EMBRANKMENT IN PLACE	4 EACH
TOP COURSE IN PLACE	90 CUBIC YARDS
BACKFILL	24 CUBIC YARDS
12" DIA. CMP PIPE	5 LINEAL FEET
RELOCATE FENCE	85 LINEAL FEET

**SANDERS ROAD BRIDGE NO. 88252**