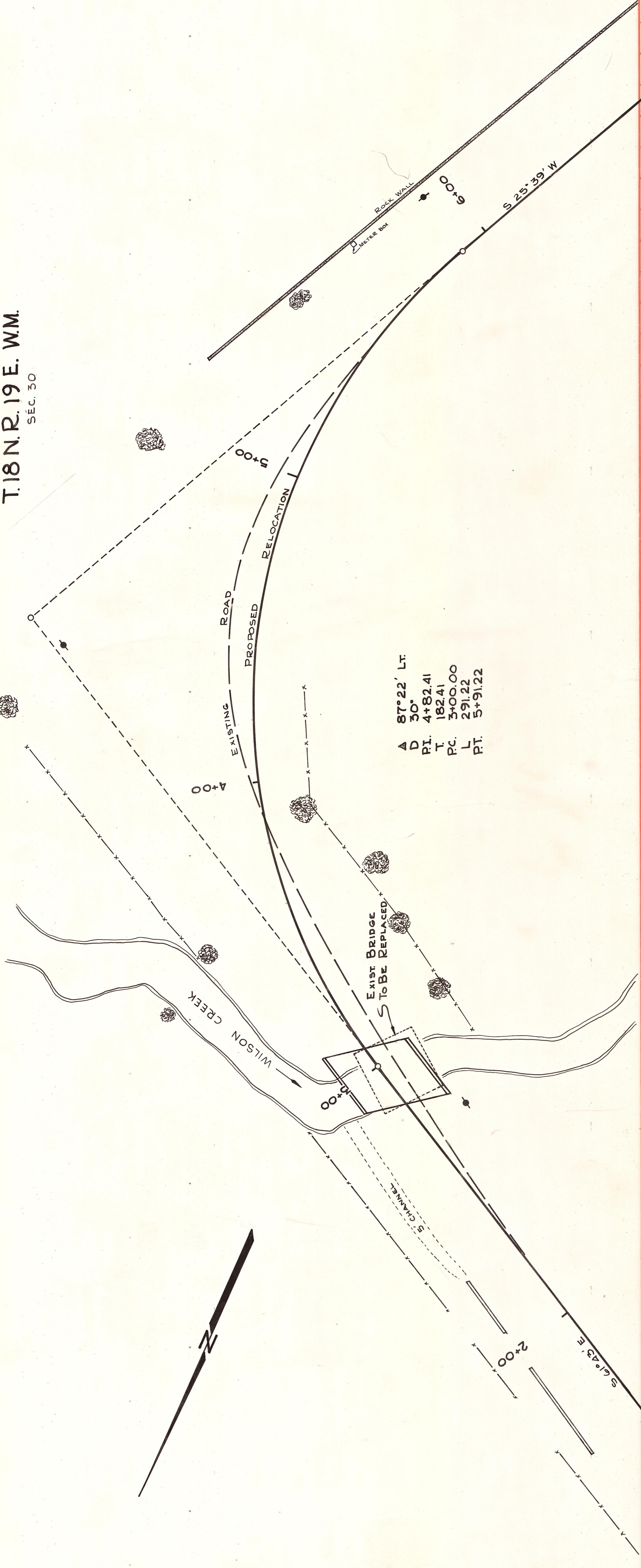


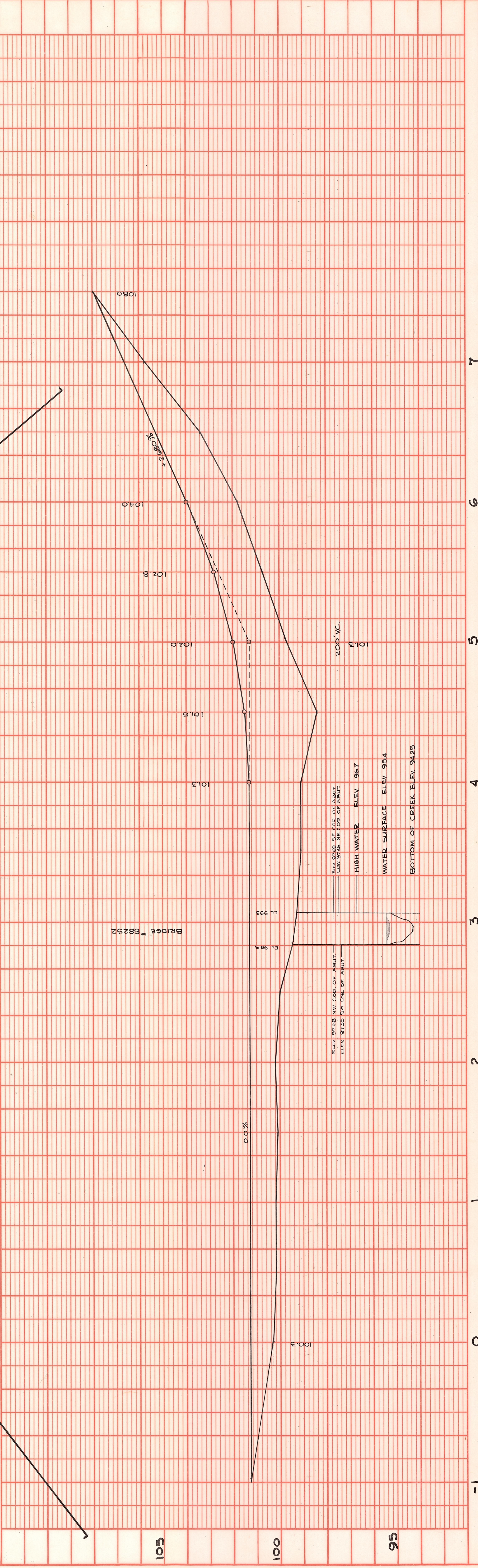
T.18 N.R.19 E. WM.
SEC. 30



A 87° 22' Lt.
D 30°
PI. 4+82.41
T 182.41
PC. 3+00.00
L 291.22
PT. 5+91.22

OFFICE OF COUNTY ROAD ENGINEER
KITITAS COUNTY
ELLENSBURG, WASHINGTON
SANDERS ROAD

SCALE: $\frac{1}{4}'' = 20'$
DRAWN BY B.S. DATE MAY, 1970 SHEET 1 OF 1
APPROVED: *[Signature]* DATE 7/10/70
COUNTY ROAD ENGINEER



NO.	DATE
BY	DATE
SURVEYED	
PLOTTED	
CHECKED	
BY	
DATE	
PLAN	
NO. OF WAY CHECKED	
ALIGNED CHECKED	
DATE	

NO.	DATE
BY	DATE
SURVEYED	
PLOTTED	
CHECKED	
BY	
DATE	
PROFILE	
STRUCTURE NOTATION CHECKED	
DATE	