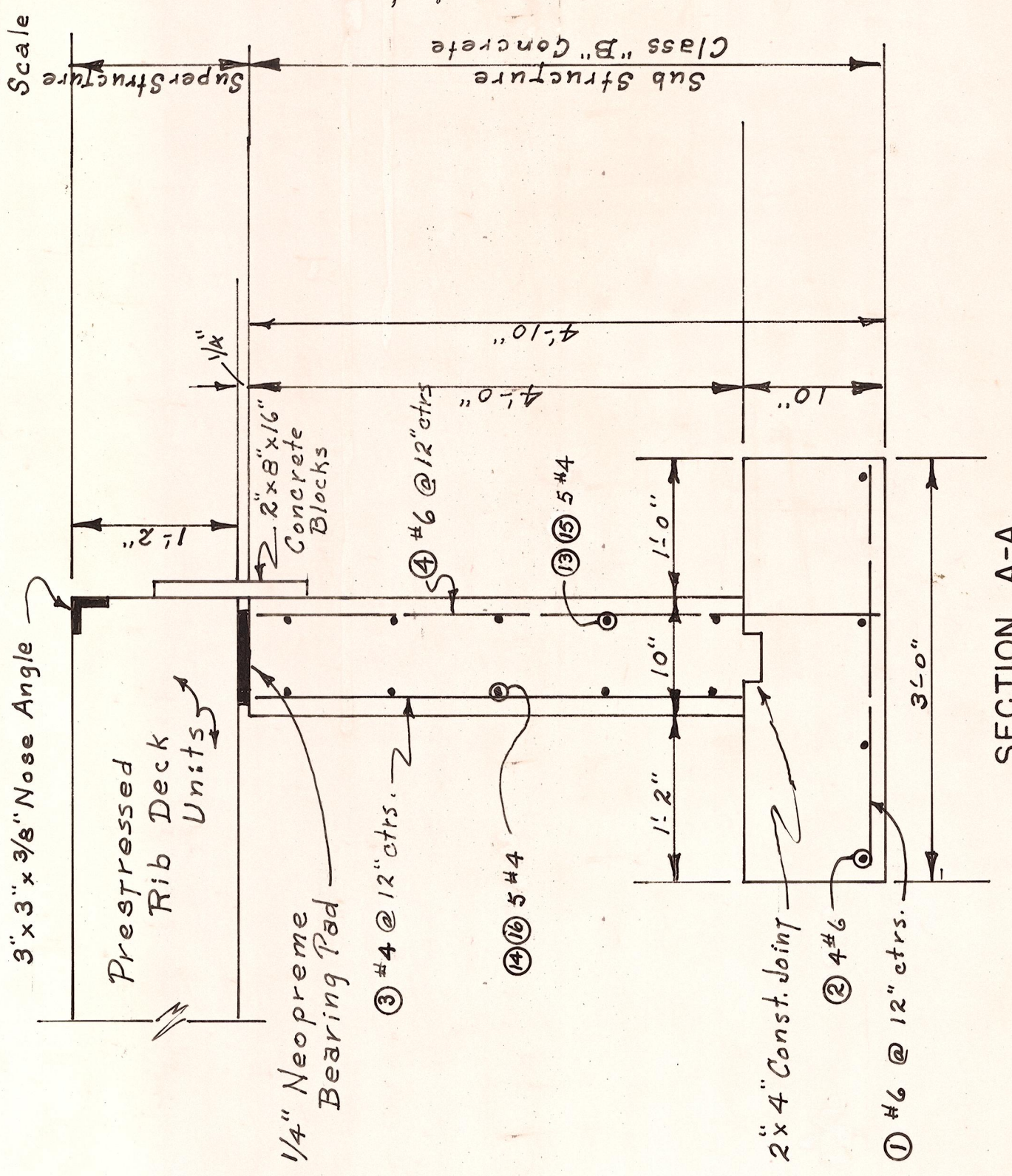
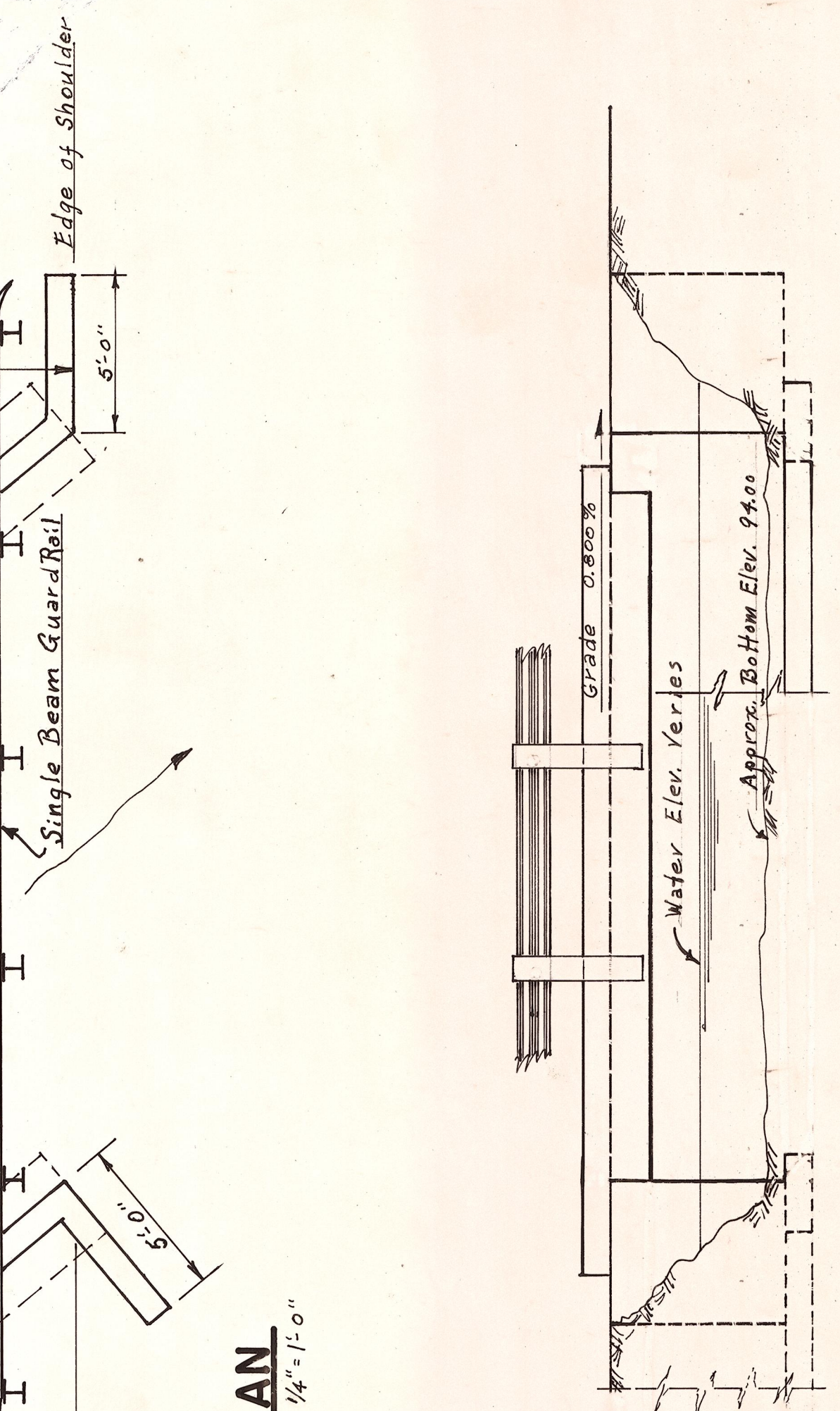


ELEVATION DATUM - ASSUMED = 100.00

PLAN
Scale 1/4" = 1'-0"

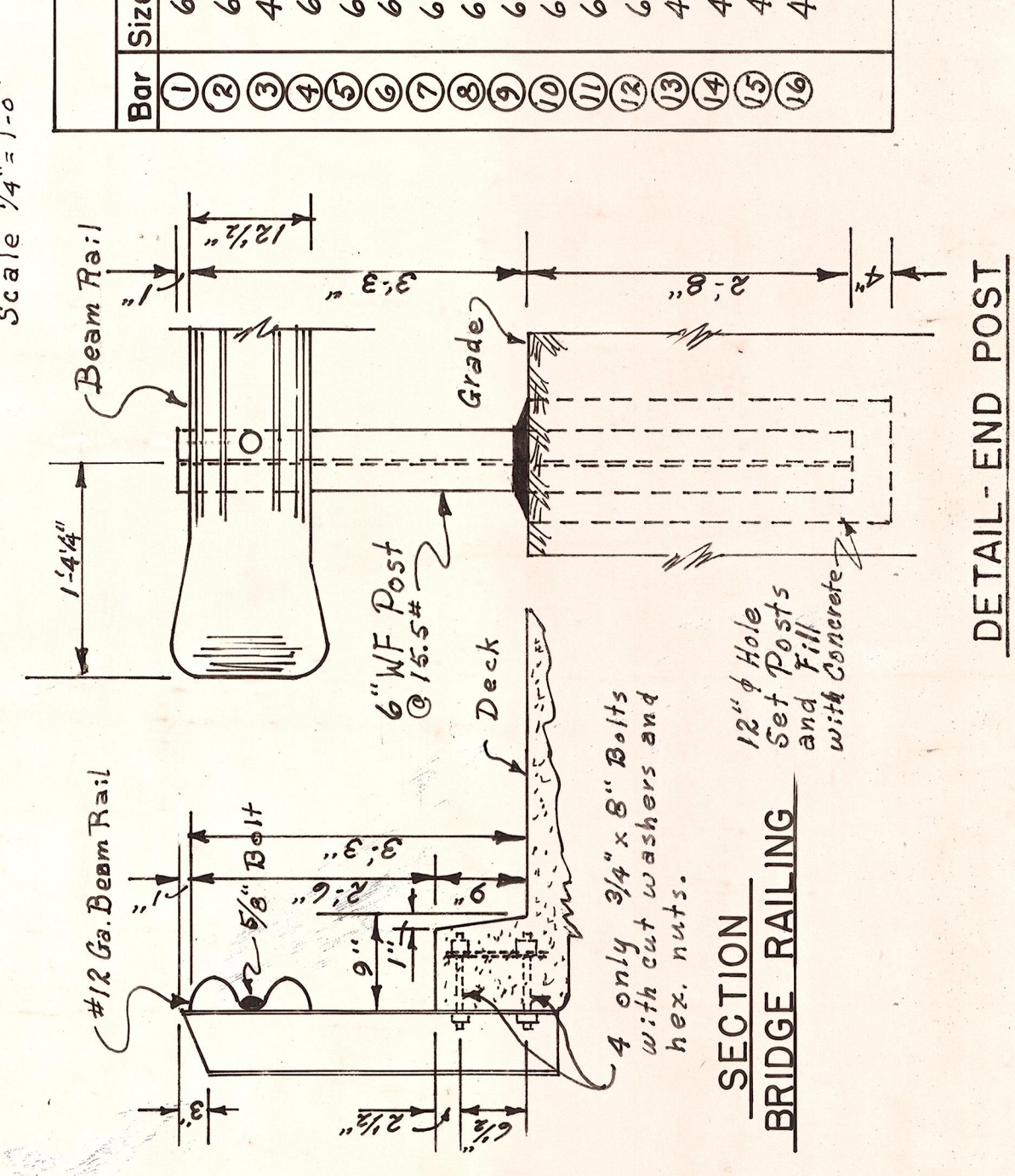


SECTION A-A



ELEVATION

SUMMARY OF QUANTITIES		
Item No.	Item	Quantities
1.	Structure Excavation	117 c.y.
2.	Concrete Class "B"	24 c.y.
3.	Reinforcing Steel	3500 lbs.
4.	Superstructure, in place	Lump Sum
5.	Beam Guard Railing	68 lin-ft.
6.	Remove Existing Bridge	Lump Sum



DETAIL - END POST

SINGLE BEAM GUARD RAILING

Bar Size	Location	No.	Lgth.	Description
1	Abut. #1 #2, Footings	96	2'-9" Str.	
2	" " " " "	16	24'-3" Str.	
3	" " " " "	84	3'-10" Str.	
4	" " " " "	84	4'-7" Str.	
5	Wing Wall #1 #2 Vert. Front & Back	57	4'-11" Str.	4:6 1/2
6	Abut. #1 #2 Vert. Back Face	10	5'-9" Str.	4:9
7	" " " " "	14	6'-1"	
8	Abut. #1 Horz. Back Face	14	6'-11"	1:5 1/2
9	" " " " "	7	9'-0"	1:3 1/2
10	" " " " "	7	5'-4"	7:9
11	" " " " "	10	24'-6" Str.	
12	" " " " "	10	24'-11" Str.	4:2
13	" " " " "	10	23'-11" Str.	
14	Abut. #2 Horz. Back Face	10	24'-0" Str.	4:8
15	" " " " "			
16	" " " " "			

OFFICE OF COUNTY ROAD ENGINEER
KITTITAS COUNTY
 ELLENSBURG, WASHINGTON
BRIDGE No. 79011
No. 81 ROAD
 SCALE: $\frac{1}{4}$ " = 1'-0"
 CRP 7-68
 DRAWN BY M.F.G. DATE AUG. 1968
 APPROVED: *[Signature]* DATE *9-9-68*
 SHEET 2 OF 6
 COUNTY ROAD ENGINEER

LOADING - H 20
 SEE SHEET No. 6 FOR GENERAL NOTES